

Product datasheet for **RG221539**

KCNH5 (NM_172376) Human Tagged ORF Clone

Product data:

Product Type:	Expression Plasmids
Product Name:	KCNH5 (NM_172376) Human Tagged ORF Clone
Tag:	TurboGFP
Symbol:	KCNH5
Synonyms:	EAG2; H-EAG2; Kv10.2
Mammalian Cell Selection:	Neomycin
Vector:	pCMV6-AC-GFP (PS100010)
E. coli Selection:	Ampicillin (100 ug/mL)



[View online »](#)

ORF Nucleotide Sequence:

>RG221539 representing NM_172376
 Red=Cloning site Blue=ORF Green=Tags(s)

TTTTGTAATACGACTCACTATAGGGCGGCCGGGAATTCGTCGACTGGATCCGGTACCGAGGAGATCTGCC
 GCC**CGGATCGCC**

ATGCAGAAAAGCAGCACTTGCAGTTTTATGTATGGGAATTGACTGACAAGAAGACCATTGAGAAAGTCA
 GGCAAACCTTTGACAACTACGAATCAAACCTGCTTTGAAGTTCTTCTGTACAAGAAAAACAGAACCCCTGT
 TTGGTTTTATATGCAAATTGCACCAATAAGAAATGAACATGAAAAGGTGGTCTTGTCTGTACTTTT
 AAGGATATTACGTTGTTCAAACAGCCAATAGAGGATGATTCAACAAAAGTTGGACGAAATTTGCCCGAT
 TGACACGGGCTTTGACAAATAGCCGAAGTGTTTTGCAGCAGCTCACGCCAATGAATAAACAGAGGTGGT
 CCATAAACATTCAAGACTAGCTGAAGTCTTTCAGCTGGGATCAGATATCCTTCTCAGTATAAACAAAGAA
 GCGCCAAAGACGCCACCACACATTATTTTACATTATTGTGCTTTTAAACTACTTGGGATTGGGTGATTT
 TAATTCTTACCTTCTACACCGCCATTATGGTTCCTTATAATGTTTCTTCAAACAAAGCAGAACAACAT
 AGCCTGGCTGGTACTGGATAGTGTGGTGGACGTTATTTTCTGGTTGACATCGTTTTAAATTTTACACG
 ACTTTCTGTTGGGGCCCGGTGGAGAGGTCAATTTCTGACCCTAAGCTCATAAGGATGAACTATCTGAAAACCT
 GGTTTGTGATCGATCTGCTGCTTGTTTACCTTATGACATCATCAATGCCTTTGAAAATGTGGATGAGGG
 AATCAGCAGTCTCTTCAAGTCTTTAAAAGTGGTGGTCTCTTACGACTGGGCCGTGTGGCTAGGAAACTG
 GACCATTACCTAGAATATGGAGCAGCAGTCTCGTGTCTCTGGTGTGTGTGGTGGTGGCCCACT
 GGCTGGCTGCATATGGTATAGCATCGGAGACTACGAGGTCATTGATGAAGTCAACACCATCCAAAT
 AGACAGTTGGCTCTACCAGCTGGCTTTGAGCATTGGGACTCCATATCGCTACAATACCAGTGTGGGATA
 TGGGAAGGAGGACCCAGCAAGGATTCATTGTACGTGCTCTCTACTTTACCATGACAAGCCTTACAA
 CCATAGGATTTGAAACATAGCTCCTACCACAGATGTGGAGAAGATGTTTTCGGTGGCTATGATGATGGT
 TGGCTCTCTTCTTATGCAACTATTTTTGGAAATGTTACAACAATTTTCCAGCAAATGTATGCCAACACC
 AACCGATACCATGAGATGCTGAATAATGTACGGGACTTCTAAAACCTATCAGGTCCCAAAAGGCCTTA
 GTGAGCGAGTCATGGATTATATTGTCTCAACATGGTCCATGTCAAAGGCATTGATACAGAAAAGTCTCT
 CTCCATCTGTCCCAAGGACATGAGAGCTGATATCTGTGTTTCTAAACCGGAAGTTTTTAATGAACAT
 CCTGCTTTTTCGATTGGCCAGCGATGGGTGTCTGCGCGCCTTGGCGGTAGAGTTCCAAACCATTCACTGTG
 CTCCCGGGACCTCATTTACCATGCTGGAGAAAGTGGATGCCCTCTGCTTTGTGGTGTGAGGATCCTT
 GGAAGTCATCCAGGATGATGAGGTGGTGGCTATTTTAGGGAAGGGTATGATTTTGGAGACATCTCTGG
 AAGGAAACCACCCTTGCCATGCATGTGCGAACGTCGGGCACTGACGACTGTGACCTACACATCATCA
 AGCGGGAAGCCTTGCTCAAAGTCTGGACTTTTATACAGCTTTTCAAACCTCTTCTCAAGGAATCTCAC
 TCTTACTTGCAATCTGAGGAAACGGGGATGTTTCTCCATGGCAAACGCTCTG

ACGCGTACGCGGCCGCTCGAG – GFP Tag – GTTTAA

Protein Sequence:

>RG221539 representing NM_172376
 Red=Cloning site Green=Tags(s)

MQKSSTCSFMYGELTDKKTIEKVRQTFDNYESNCFEVLLYKKNRTPVWFYMQIAPIRNEHEKVVFLCTF
 KDITLTKQPIEDDSTKGWTKFARLTRAL TNSRSLVQLTPMKNTEVVHKHSRLAEVLQLGSDILPQYKQE
 APKTPPHIILHYCAFKTWDWVILILTFYTAIMVPYNVSFKTKQNNIAWLVLDSVVDVIFLVDIVLNFHT
 TFGVPGGEVSDPKLIRMNYLKTWFVIDLLSCLPYDIINAFENVDEGISSLFSSLKVVRLRLGRVARKL
 DHYLEYGA AVL VLLVCFGLVAHWLACIWIYSIGDYEVIDEVTNTIQIDSWLYQLALSIGTPYRYNTSAGI
 WEGGPSKDSLIVSSLYFTMTSLTTIGFGNIAPTDDVEKMF SVAMMMVGSLLYATIFGNVTTIFQQMYANT
 NRYHEMLNVRDFLKLKLYQVPKGLSERVMDYIVSTWSMSKIDTEKVL SICPKDMRADICVHLNRKVFNEH
 PAFRLASDGCLRALAVEFQTIHCAPGLIYHAGESVDALCFVVSGLSEVIQDDEVVAAILKGDVDFGDIWF
 KETTLAHACANVRALTYCDLHIKREALLKVLDFYTAFA NSFSRNLTLTCNLKRGRWFSMANAL

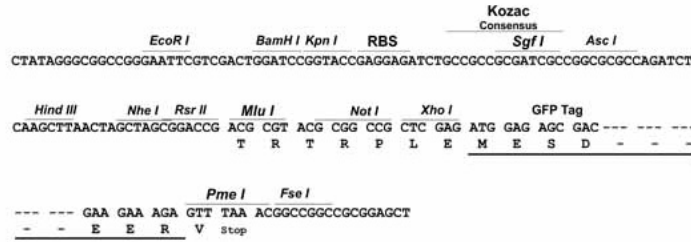
TRTRPLE – GFP Tag – V

Restriction Sites:

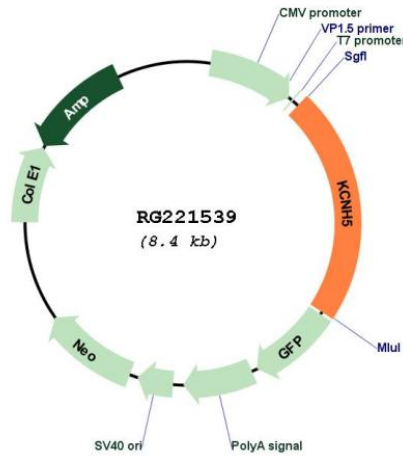
SgfI-MluI

Cloning Scheme:

Cloning sites used for ORF Shutting:



Plasmid Map:



ACCN: NM_172376
 ORF Size: 1872 bp

OTI Disclaimer:	The molecular sequence of this clone aligns with the gene accession number as a point of reference only. However, individual transcript sequences of the same gene can differ through naturally occurring variations (e.g. polymorphisms), each with its own valid existence. This clone is substantially in agreement with the reference, but a complete review of all prevailing variants is recommended prior to use. More info
OTI Annotation:	This clone was engineered to express the complete ORF with an expression tag. Expression varies depending on the nature of the gene.
Components:	The ORF clone is ion-exchange column purified and shipped in a 2D barcoded Matrix tube containing 10ug of transfection-ready, dried plasmid DNA (reconstitute with 100 ul of water).
Reconstitution Method:	<ol style="list-style-type: none">1. Centrifuge at 5,000xg for 5min.2. Carefully open the tube and add 100ul of sterile water to dissolve the DNA.3. Close the tube and incubate for 10 minutes at room temperature.4. Briefly vortex the tube and then do a quick spin (less than 5000xg) to concentrate the liquid at the bottom.5. Store the suspended plasmid at -20°C. The DNA is stable for at least one year from date of shipping when stored at -20°C.
RefSeq:	NM_172376.1 , NP_758964.1
RefSeq Size:	2490 bp
RefSeq ORF:	1874 bp
Locus ID:	27133
Cytogenetics:	14q23.2
Protein Families:	Druggable Genome, Ion Channels: Potassium, Transmembrane
Gene Summary:	This gene encodes a member of voltage-gated potassium channels. Members of this family have diverse functions, including regulating neurotransmitter and hormone release, cardiac function, and cell volume. This protein is an outward-rectifying, noninactivating channel. Alternative splicing results in multiple transcript variants. [provided by RefSeq, Jul 2013]