

Product datasheet for **RG221536**

BAT3 (BAG6) (NM_004639) Human Tagged ORF Clone

Product data:

| | |
|---------------------------|---|
| Product Type: | Expression Plasmids |
| Product Name: | BAT3 (BAG6) (NM_004639) Human Tagged ORF Clone |
| Tag: | TurboGFP |
| Symbol: | BAT3 |
| Synonyms: | BAG-6; BAT3; D6S52E; G3 |
| Mammalian Cell Selection: | Neomycin |
| Vector: | pCMV6-AC-GFP (PS100010) |
| E. coli Selection: | Ampicillin (100 ug/mL) |
| ORF Nucleotide Sequence: | >RG221536 representing NM_004639 Red=Cloning site Blue=ORF Green=Tags(s) |

TTTTGTAATACGACTCACTATAGGGCGGCCGGAATTCGTCGACTGGATCCGGTACCGAGGAGATCTGCC
GCC**CGATCGCC**

ATGGAGCCTAATGATAGTACCAGTACCGCTGTGGAGGAGCCTGACAGCTTGGAGGTGTTGGTGAAGACCT
TGGACTCTCAAACCTCGTACCTTTATTGTGGGGGCCAGATGAATGTAAAAGAGTTAAGGAGCACATTGC
TGCCTCTGTCAGCATCCCATCTGAAAAACAACGGCTCATTTACCAGGGACGAGTTCTGCAAGATGATAAG
AAGCTTCAGGAATACAATGTTGGGGAAAGTTATCCACCTGGTGAACGGGCTCCTCCTCAGACTCACC
TCCCTTCTGGGGCATCTTCTGGGACGGGTCTGCCTCAGCCACTCATGGTGGGGATCCCCCTGGTAC
TCGGGGGCTGGGCCTCTGTTTCATGACCGGAATGCCAACAGCTATGTCATGGTTGGAACCTTCAATCTT
CCTAGTGACGGCTCTGCTGTGGATGTTACATCAACATGGAACAGGCCCGGATTGAGAGTGGACCCGGG
TACGGCTGGTGTGGCTCAGCACATGATCAGGGATATACAGACCTTACTATCCCGGATGGAGACTCTCCC
CTACCTTCAGTGTGAGGAGGGCCCAACCGCAGCACAGTCAGCCGCCCGCAGCCACCGGCTGTGACC
CCGGAGCCAGTAGCCTTGAGCTCTAAACATCAGAACCAGTTGAAAGTGAAGCACCTCCCCGGGAGCCCA
TGGAGGCAGAAGAAGTGGAGGAGCGTGCCCCAGCCAGAACCCGGAGCTCACTCCTGGCCAGCCCCAGC
GGGCCAACACCTGCCCCGAAACAAATGCACCAACCATCCTTCCCCTGCGGAGTATGTCGAGGTGCTC
CAGGAGCTACAGCGGCTGGAGAGTCGCCTCCAGCCCTTCTGACGCGCTACTACGAGGTTCTGGGTGCTG
CTGCCACCACGGACTACAATAACAATCACGAGGGCCGGGAGGAGATCAGCGTTGATCAACTTGGTAGG
GGAGAGCCTGCGACTGCTGGCAACACCTTTGTTGCACTGTCTGACCTGCGCTGCAATCTGGCCTGCACG
CCCCACGACACCTGCATGTGGTCCGGCTATGTCTCACTACACCACCCCATGGTGTCCAGCAGGCAG
CCATTCACATACAGATCAATGTGGGAACCACTGTGACCATGACAGGAAATGGGACTCGGCCCCCCAAC
TCCCAATGCAGAGGCACCTCCCCCTGGTCTGGCAGGCCTCATCCGTGGCTCCGTCTTCTACCAATGTC
GAGTCTCAGCTGAGGGGCTCCCCGCCAGGTCCAGCTCCCCGCCAGCCACCAGCCACCCGAGGGTCA
TCCGGATTTCCACCAGAGTGTGGAACCCGTGGTCATGATGCACATGAACATTCAAGATTCTGGCACACA
GCCTGGTGGTGTCCGAGTGTCCCACTGGCCCCCTGGGACCCCTGGTCATGGCCAACCTGGGACAG



[View online >](#)

CAGGTGCCAGGCTTCCCAACAGCTCCAACCCGGGTGGTATTGCCCGGCCACTCCTCCACAGGCTCGGC
 CTTCATCCTGGAGGGCCCCAGTCTCTGGGACTGCAGGGCCGGTCTGGGTACCAATGCCTCGTT
 GGCCAGATGGTGAAGCGCTTGTGGGGCAGCTTCTATGCAGCCAGTCTTGTGGCTCAGGGGACCCCA
 GGTATGGCTCCACCGCCAGCCCCGCCACTGCTTCTGCCAGTGTGGCACCACCAACACAGCTACCACAG
 CTGGCCCCGCTCCTGGGGGGCTGCCAGCCTCCACCCACCCCTCAACCTCCATGGTGATCTTCAGTT
 CTCTCAGTCTTGGGGAACCTGCTAGGGCTGCAGGGCCAGGGCTGGAGGGCTGGTGTGGCTTCTCCC
 ACCATCACTGTGGCGATGCCTGGTGTCCCTTCTCCAAGGCATGACTGACTTCTGCAGGCAACAC
 AGACAGCCCTCCACACCCCCACTCCTCCACCCACCCACTGCCCCAGAGCAGCAGACCATGCCCC
 ACCAGGCTCCCTTCTGGTGGCGCAGGGAGTCTGGAGGCTGGTCTTGGAGCCTGTACCCGGAGTTT
 TTTACCTCAGTGGTGCAGGGTGTGCTCAGTCCCTGCTGGGCTCCCTGGGGCTCGGGTGCAGCAGTG
 AAAGTATTGCTGCCTTACATAACGCCTCAGTGGATCCAGCAACATCTTTGAGCCTGGAGCTGATGGGG
 CCTTGGATTCTTTGGGCCTTGTCTTCTTCTGTGCCAGAACTCTCTATGGTGGACGTAGTGATGCTT
 CTCATGGGCATTTCCAGCCACTACAACGGCTCCAGCCCCAGTGCATCCTTCTCCACCAGCACTACC
 TGGGTGGTCAAGGACCCACCCAGTAACTCCGGATGGCAACCCACACATTGATCACGGGGCTAGAAGA
 GTATGTGCGGGAGAGTTTTCTTGGTGCAGGTTCAAGCAGTGTGGACATCATCCGGACAAACCTGGAA
 TTTCTCCAAGAGCAGTTAATAGCATTGCTGCGCATGTGCTGCATTGCACAGATAGTGGATTTGGGGCC
 GTTGCTGGAGTTGTGTAAACAAGGCTGTTTGAATGCCTGGCCCTAAACCTGCACTGCTTGGGGGACA
 GCAGATGGAGCTTGTGCTGTTATCAATGGCCGAATTCGTGATGTCTCGTGGGGTGAATCCCTCCTTG
 GTGAGCTGGTGCACACTATGATGGGACTGAGGCTTCAAGTGGTACTGGAGCACATGCCTGTAGGCCCTG
 ATGCCATTCTCAGATACGTTTCAGAGGTTGGTGTATCCCCCAGCCACTTCTGAGGAGCCAATGGAAGT
 TCAGGGAGCAGAAAGAGCTTCCCTGAGCCTCAGCGGGAGAATGCTTCCCAGCCCTGGAACAACAGCA
 GAAGAGGCCATGTCCCGAGTCCACTCCTGCTCCTGAGGGGGCTCCCGGATGAACAGGATGGAGCTT
 CAGCTGAGACAGAACCTGGGCAGTGCAGTCCCCCAGAAATGGTCCCTATTATCCAGCAGGACATTCA
 GAGCCAGCGGAAGGTGAAACCGCAGCCCTCTGAGTGTGCTACCTCAGTGGTATGCCTGCCAAGAGA
 CGCAAGACGATGCAGGGTGGGGCCCCAGCTGCTTCTCAGAGGCTGTGAGCCGGCAGCTAAGCGAG
 CCGGAGCTCGGCCCTGACGAGCCCGAGAGCCTGAGCCGGGACCTGGAGGCACCAGAGGTTCAAGAGAG
 CTACAGGCAGCAGCTCCGGTCTGATATACAAAACGACTGCAGGAAGACCCCACTACAGTCCCCAGCGC
 TTCCCAATGCCAGCGGCCTTGTGATGATCCT

ACGCGTACGCGGCCGCTCGAG - GFP Tag - GTTTAA

Protein Sequence:

>RG221536 representing NM_004639
 Red=Cloning site Green=Tags(s)

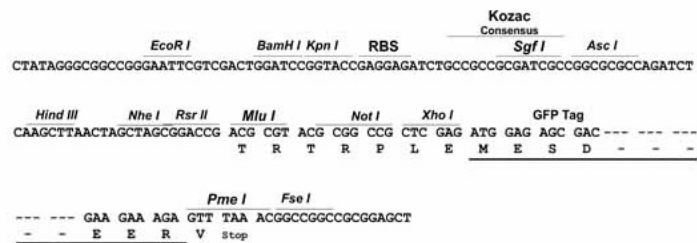
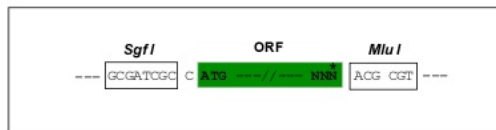
MEPNDSTSTAVEEPDSLEVLVKTLDSTQTRTFIVGAQMNVKEFKEHIAASVSIPEKQRLIYQGRVLQDDK
 KLQEYNVGGKVIHLVERAPPQTHLPSGASSGTGSASATHGGGSPGTRGPGASVHNRANSYVMVGTFFNL
 PSDGSAVDVHINMEQAPIQSEPRVRLVMAQHMRDIQTLLSRMETLPYLQCRGGPQPQHSQPPPQPPAVT
 PEPVALSSQTSEPVSEAPPREPMEAEVEERAPAQNPELTPGPAPAGPTPAPETNAPNHPSPAAYVEVL
 QELQRLSRLQPFLLQRYEVLGAAATTDYNNHGREEDQRLINLVGESLRLLGNTFVALSDLRCNLACT
 PPRHLHVVRPMSHYTTPMVLQQAAPIQINVTGTTVMTGNGTRPPPTPNAEAPPGPQASSVAPSTNV
 ESSAEGAPPPGAPPPATSHPRVIRISHQSVPEVMMHMNIQDSGTQPGGVPASPTGPLGPPGHGQTLGQ
 QVPGFPTAPTRVVIARPTPPQARPSHPGGPPVSGTLQAGLGTNASLAQMVSGLVQQLMQPVLVAQGP
 GMAPPAPATASASAGTTNTATTAGPAPGGPAQPPPTQPMSADLQFSQLLGNLLGPAGPGAGGPGVASP
 TITVAMPGVPAFLQGMTDFLQATQTAPPPPPPPPPPPAPEQQTMPPPGSPSGGAGSPGGLGLESLSPEF
 FTSVVQGVLSLLGSLGARAGSSEIAAFIQRLSGSSNIFEPGADGALGFFGALLSLLCQNFMSVDVVML
 LHGHFQPLQRLQPLRSFFHQHYLGGQEPTPSNIRMATHLITGLEEYVRESFSLVQVQGVDIIRTNLE
 FLQEQFNSIAAHVLHCTDSGFGARLLELCNQGLFECLALNLHCLGGQMEAAVINGRIRMSRGVNP
 VSWLTTMGLRLQVLEHMPVGPDAILRYVRRVGDPPQPLPEEPMEVQGAERASPEPQRENASAPAGTTA
 EEAMSRGPPPAPEGGSRDEQDGASAETEPWAAAVPPEWVPIIQQDIQSQRKVKQPPLSDAYLSGMPAKR
 RKTMQEGEPQLLLSEAVSRAAKAAGARPLTSPESLSRDLEAPEVQESYRQLRSDIQKRLQEDPNYSQPR
 FPNAQRAFADDP

TRTRPLE - GFP Tag - V

Restriction Sites: SgfI-MluI

Cloning Scheme:

Cloning sites used for ORF Shuttling:



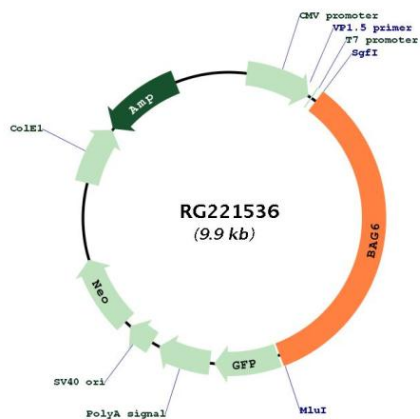
ACCN: NM_004639

ORF Size: 3396 bp

OTI Disclaimer: The molecular sequence of this clone aligns with the gene accession number as a point of reference only. However, individual transcript sequences of the same gene can differ through naturally occurring variations (e.g. polymorphisms), each with its own valid existence. This clone is substantially in agreement with the reference, but a complete review of all prevailing variants is recommended prior to use. [More info](#)

| | |
|-------------------------------|---|
| OTI Annotation: | This clone was engineered to express the complete ORF with an expression tag. Expression varies depending on the nature of the gene. |
| Components: | The ORF clone is ion-exchange column purified and shipped in a 2D barcoded Matrix tube containing 10ug of transfection-ready, dried plasmid DNA (reconstitute with 100 ul of water). |
| Reconstitution Method: | <ol style="list-style-type: none">1. Centrifuge at 5,000xg for 5min.2. Carefully open the tube and add 100ul of sterile water to dissolve the DNA.3. Close the tube and incubate for 10 minutes at room temperature.4. Briefly vortex the tube and then do a quick spin (less than 5000xg) to concentrate the liquid at the bottom.5. Store the suspended plasmid at -20°C. The DNA is stable for at least one year from date of shipping when stored at -20°C. |
| RefSeq: | NM_004639.2 , NP_004630.2 |
| RefSeq Size: | 3773 bp |
| RefSeq ORF: | 3399 bp |
| Locus ID: | 7917 |
| UniProt ID: | P46379 |
| Cytogenetics: | 6p21.33 |
| Domains: | UBQ |
| Protein Families: | Druggable Genome, Stem cell - Pluripotency |
| Gene Summary: | This gene was first characterized as part of a cluster of genes located within the human major histocompatibility complex class III region. This gene encodes a nuclear protein that is cleaved by caspase 3 and is implicated in the control of apoptosis. In addition, the protein forms a complex with E1A binding protein p300 and is required for the acetylation of p53 in response to DNA damage. Multiple transcript variants encoding different isoforms have been found for this gene. [provided by RefSeq, Jul 2008] |

Product images:



Circular map for RG221536