

Product datasheet for **RG221505**

DACH1 (NM_080759) Human Tagged ORF Clone

Product data:

Product Type:	Expression Plasmids
Product Name:	DACH1 (NM_080759) Human Tagged ORF Clone
Tag:	TurboGFP
Symbol:	DACH1
Synonyms:	DACH
Mammalian Cell Selection:	Neomycin
Vector:	pCMV6-AC-GFP (PS100010)
E. coli Selection:	Ampicillin (100 ug/mL)



[View online »](#)

ORF Nucleotide
Sequence:

>RG221505 representing NM_080759
Red=Cloning site Blue=ORF Green=Tags(s)

TTTTGTAATACGACTCACTATAGGGCGGCCGGGAATTCGTCGACTGGATCCGGTACCGAGGAGATCTGCC
GCCCGCATCGCC

ATGGCAGTGCCGGCGGCTTTGATCCCTCCGACCCAGCTGGTCCCCCTCAACCCCAATCTCCACGTCTG
CTTCCTCCTCTGGCACCACCACCTCCACCTCTTCGGCGACTTCGTCCTCCGGCTCCTTCCATCGGACCCCC
GGCGTCTCTGGGCCAACTCTGTTCCGCCCGGAGCCCATCGCTTCGGCGGCGGGCGGCGGCCACAGTC
ACCTCTACCGGGCGGCGGGCGGGCGGGCGGGCGGGCGGGCAGCGGAGGCGGGCGGGCAGCAGCGGCAACG
GAGGGCGGCGTGGCGGGCGGGCGGGTGGCAGCAACTGCAACCCCAACCTGGCGGGCGGAGCAACGGCAG
CGGCGGGCGGGCGGGCGGCATCAGCGCTGGCGGGCGGCTCGTTCAGCACCCCATCAACGCCAGCACC
GGCAGCAGCAGCAGCAGTAGCAGCAGCAGCAGCAGCAGCAGTAGTAGCAGCAGCAGCAGTAGCAGCA
GCAGCTGGGCCCCCTCCCGGGAAACCCGTGTACTCAACCCCGTCCCCAGTGGAAAACACCCCTCAGAA
TAATGAGTGCAAAATGGTGGATCTGAGGGGGGCCAAAGTGGCTTCCTTCACGGTGGAGGGCTGCGAGCTG
ATCTGCCCTGCCCAAGGCTTTCGACCTGTTCTGAAGCACTTGGTGGGGGGCTTGATACGGTCTACACCA
AGCTGAAGCGGCTGGAGATCACGCCGGTGGTGTGCAATGTGGAACAAGTTCGCATCCTGAGGGGACTGGG
CGCCATCCAGCCAGGAGTGAACCGCTGCAACTCATCTCCAGGAAGGACTTCGAGACCCTTACAATGAC
TGCACCAACGCAAGTCTAGACCTGGAAGGCTCCTAAGAGGACTCAAAGTGTCACTCCCCAGAGAAGT
CTCACATCATGCCGATCTGTCCCTGGTCTCATGTCTCCTGGGATAATTCCACCAACAGGTCTGACAGC
AGCCGCTGCAGCAGCTGCTGTGCTACCAATGCAGCTATTGCTGAAGCAATGAAGGTGAAAAAATCAA
TTAGAAGCCATGAGCAACTATCATGCCAGTAATAACCAACATGGAGCAGACTCTGAAAACGGGGACATGA
ATCAAGTGTCCGACTGGAACCTCCTTTTATGATGATGCCCCACCCTAATTCCTGTCACTACCTCC
AGCATCTGTACCATGGCAATGAGCCAGATGAACCACTCAGCACCATTCGAAATATGGCAGCAGCAGCA
CAAGTTCAGAGTCCCCATCCAGAGTTGAGACATCAGTTATTAAGGAGCGTGTTCCTGATAGCCCTCAC
CTGCCCTCTCTGGAGGAGGGAGAAGGCTGGCAGTCAACCATCATCACATCGCAGCAGCAGCGTGTG
CAGCTCCCTGCTCGGACTGAGAGCTCTTCTGACAGAATCCCGGTCCATCAGAATGGGTTGTCCATGAAC
CAGATGCTGATGGGCTTATCACCAATGTACTTCTGGGCCAAAGAGGGAGATTTGGCCGGTCAAGACA
TGGGACATGAGTCAAAAAGGATGCATATTGAAAAAGATGAGACCCCGCTTCTACACCAACCGCAAGAGA
CAGCCTTGACAACTCTCTAACTGGCATGGACAACCACTGCCTCCAGGTTTTCCATCTCCTTTTCTG
TTTCTGATGGACTGTCTCCATCGAGACTCTTCTGACTAACATACAGGGGCTGTTGAAAGTTGCCATAG
ATAATGCCAGAGCTCAAGAGAAACAGGTCCAACCTGGAAAAAAGTGAAGTGAAGATGGATTTTTTAAGGGA
AAGAGAACTAAGGAAACACTTGAGAAGCAGTTGGCTATGGAACAAAAGAATAGAGCCATAGTTCAAAGG
AGGCTAAAGAAGGAGAAGAAGGCAAGAGAAAATTGCAGGAAGCACTTGAGTTTGAGACGAAACGGCGTG
AACAGCAGAACAGCGCTAAAACAGGCAGCTTCAACAGATAGTCTCAGGGTCTTAAATGACTCTCTGAC
CCCAGAGATAGAGGCTGACCGCAGTGGCGGCAGAACAGATGCTGAAAGGACAATACAAGATGGAAGACTG
TATTTGAAAACACTGTCTATGTAC

ACGCGTACGCGGCCGCTCGAG – GFP Tag – GTTTAA

Protein Sequence: >RG221505 representing NM_080759
 Red=Cloning site Green=Tags(s)

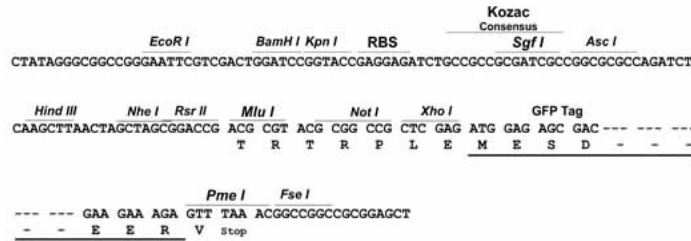
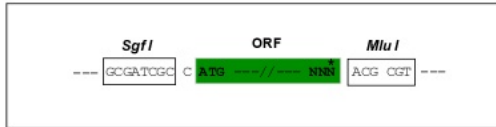
MAVPAALIPPTQLVPPQPPISTASSSGTTTSTSSATSSPAPSIGPPASSGPTLFRPEPIASAAAAAATV
 TSTGGGGGGGGGGGGGGSSNGGGGGGGGGGSGNCNPNLAAASNGSGGGGGGISAGGGVASSTPINAST
 GSSSSSSSSSSSSSSSSSSSSSSSSCGPLPGKPVYSTPSPVENTPQNNECKMVDLRGAKVASFTVEGCEL
 ICLPQAFDLFLKHLVGLHTVYTKLRLEITPVVCNVEQVRILRGLGAIQPGVNRCKLISRKDFETLYND
 CTNASSRPGRPPKRTQSVTSPENSHIMPHSVPLMSPGIIPPTGLTAAAAAATAAAIAEAMKVKKIK
 LEAMSNYHASNNQHGADENGDMNSSVGLLEPFMMMPHPLIPVSLPPASVTMAMSQMNHLSTIANMAAAA
 QVQSPSRVETSVIKERVDPSPAPSLLEEGRPGSHPSHRSSSVSSSPARTESSSDRIPVHQNGLSMN
 QMLMGLSPNVLPGPKEGDLAGHDMGHESKRMIIEKDETPLESTPTARDSLDKLSLTHGQPLPPGFPSFL
 FPDGLSSIETLLTNIQGLLKVAIDNARAQEKQVQLEKTELKMDFLRERELRETLEKQLAMEQKNRAIVQK
 RLKKEKKAKRKLQEALEFETKRREQAETLKQAASTDSLRLVNDLSTPEIEADRSGGRTDAERTIQDGR
 YLKTTVMY

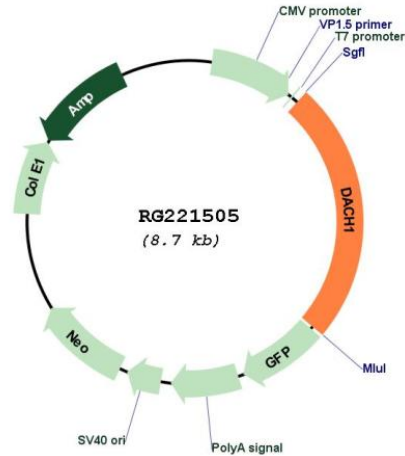
TRTRPLE - GFP Tag - V

Restriction Sites: SgfI-MluI

Cloning Scheme:

Cloning sites used for ORF Shutting:



Plasmid Map:


ACCN: NM_080759

ORF Size: 2124 bp

OTI Disclaimer: The molecular sequence of this clone aligns with the gene accession number as a point of reference only. However, individual transcript sequences of the same gene can differ through naturally occurring variations (e.g. polymorphisms), each with its own valid existence. This clone is substantially in agreement with the reference, but a complete review of all prevailing variants is recommended prior to use. [More info](#)

OTI Annotation: This clone was engineered to express the complete ORF with an expression tag. Expression varies depending on the nature of the gene.

Components: The ORF clone is ion-exchange column purified and shipped in a 2D barcoded Matrix tube containing 10ug of transfection-ready, dried plasmid DNA (reconstitute with 100 ul of water).

Reconstitution Method:

1. Centrifuge at 5,000xg for 5min.
2. Carefully open the tube and add 100ul of sterile water to dissolve the DNA.
3. Close the tube and incubate for 10 minutes at room temperature.
4. Briefly vortex the tube and then do a quick spin (less than 5000xg) to concentrate the liquid at the bottom.
5. Store the suspended plasmid at -20°C. The DNA is stable for at least one year from date of shipping when stored at -20°C.

RefSeq: [NM_080759.4](#)

RefSeq Size: 5240 bp

RefSeq ORF: 2121 bp

Locus ID:	1602
UniProt ID:	Q9UI36
Cytogenetics:	13q21.33
Domains:	Ski_Sno
Protein Families:	Transcription Factors
Gene Summary:	<p>This gene encodes a chromatin-associated protein that associates with other DNA-binding transcription factors to regulate gene expression and cell fate determination during development. The protein contains a Ski domain that is highly conserved from Drosophila to human. Expression of this gene is lost in some forms of metastatic cancer, and is correlated with poor prognosis. Multiple transcript variants encoding different isoforms have been found for this gene. [provided by RefSeq, Sep 2009]</p>