

Product datasheet for **RG221475**

USH2A (NM_007123) Human Tagged ORF Clone

Product data:

Product Type:	Expression Plasmids
Product Name:	USH2A (NM_007123) Human Tagged ORF Clone
Tag:	TurboGFP
Symbol:	USH2A
Synonyms:	dj1111A8.1; RP39; US2; USH2
Mammalian Cell Selection:	Neomycin
Vector:	pCMV6-AC-GFP (PS100010)
E. coli Selection:	Ampicillin (100 ug/mL)
ORF Nucleotide Sequence:	>RG221475 representing NM_007123 Red=Cloning site Blue=ORF Green=Tags(s)

TTTTGTAATACGACTCACTATAGGGCGGCCGGAATTCGTCGACTGGATCCGGTACCGAGGAGATCTGCC
GCC**CGATCGCC**

ATGAATTGCCAGTTCTTTCATTGGGCTCTGGCTTCTTGTTCAGGTCATTGAAATGTTGATCTTTGCCT
ATTTTGCCTCAATATCCTTGACTGAGTCACGAGGTCTTTTCCCAAGGCTGGAGAACGTGGGAGCTTTCAA
GAAAGTTTCCATCGTGCCAACCCAAGCAGTATGTGGACTCCCAGACCGAAGCACTTTTGTACAGCTCT
GCTGCTGTGAAAGTATTCAGTTCTGTACCCAGCGTTTTGTATTAGGATTGCCATACAGATCTTAC
ACCTACCTACTGCCCCTTTTCTCAGCAGGCCTCAGTAGCTGCATCACACCAGACAAGAATGATCTGCA
TCCTAACGCCCATAGCAATTCGCAAGTTTTATTTTGGAAATCACAAAGAGCTGCTTTTCTCTCCCTCT
TCTCCAAAGCTGATGGCATCATTACCTTAGCTGTATGGCTGAAACCTGAGCAACAAGGTGTAATGTGTG
TTATAGAAAAGACAGTAGATGGGCAGATTGTGTTCAAACCTACAATATCTGAGAAAAGAGACCATGTTTTA
TTATCGCACAGTAAATGGTTTGAACCTCCAATAAAAGTAATGACACTGGGGAGAATCTTGTGAAGAAA
TGGATTCATCTTAGTGTGCAGGTGCATCAGACAAAAATCAGCTTCTTTATCAATGGCGTGGAGAAGGATC
ATACACCTTTCAATGCAAGAACTCTAAGTGGTTCAATTACAGATTTTGCATCTGGTACTGTGCAATAGG
ACAGAGTTTAAATGGTTTAGAGCAGTTTGTCCGGAAGATGCAAGATTTTCGATTATACCAAGTGGCACTT
ACAAACAGAGAGATTCTGGAAGTCTTCTCTGGAGATCTTCTCAGATTGCATGCCAATCACATTGCCGTT
GCCCTGGCAGCCACCCGGGTCACCCTTTGGCACAGCGGTAAGTGCATTCTAATGATGCAGGAGACAC
AGCTGATAATAGAGTGTACGGTTGAATCCTGAAGCCATCCTCTCTCTTTTGTCAATGATAATGATGTT
GGTACTTCATGGGTTTCAAATGTGTTTACAACATTACACAGCTTAATCAAGGAGTGACTATTTAGTTG
ATTTGGAAAATGGACAGTATCAGGTGTTTTATATTATCATTAGTTCTTTAGTCCACAACCAACGGAAAT
AAGGATTCAAAGGAAGAAGGAAAATAGTTTAGATTGGGAGGACTGGCAATATTTTCCAGGAATTGGT
GCTTTTGAATGAAAAAATGGAGATTGGAAAAACCTGATTCTGTCAACTGTCTTCAGCTTTCCAATT
TACTCCATATCCCGTGCAATGTACATTTAGCATCCTGACACCTGGACCAAAATATCGTCCTGGATA
CAATAACTCTATAATACCCATCTCTCAAGAGTTCGTAAGCCACGCAATAAGGTTTCATTTTCAT



[View online »](#)

GGGCAGTACTATACAACCTGAGACTGCTGTTAACCTCAGACACAGATATTATGCAGTGGACGAAATCACCA
TTAGTGGGAGATGTCAGTGCCATGGTCATGCCGATAACTGCGACACAACAAGCCAGCCATATAGATGCC
CTGCTCCCAGGAGAGCTTCACTGAAGGACTTCATTGTGATCGCTGCTTGCCTCTTTATAATGACAAGCT
TTCCGCCAAGGTGATCAAGTTTACGCTTTCAATTGTAACCTTGCAATGCAACAGCCATTCCAAAAGCT
GCCATTACAACATCTCTGTAGACCCATTTCTTTTGGACCTTCAGAGGGGGAGGAGGTTTGTGATGA
TTGTGAGCATAAACAACAGGAAGAACTGTGAGCTGTGCAAGGATTACTTTTTCCGACAAGTTGGTGCA
GATCCTTCGGCCATAGATGTTTGC AACCCCTGTGACTGTGATACAGTTGGCACTAGAAAATGGTAGCATT
TTTGTGATCAGATTGGAGGACAGTGAATTGTAAGAGACACGTGTCTGGCAGGCAGTGAATCAGTGCCA
GAATGGATTCTACAATCTACAAGAGTTGGATCCTGATGGCTGCAGTCCCTGTAACCTGCAATACCTCTGGG
ACAGTGGATGGAGATATTACCTGTACCAAAAATTCAGGCCAGTGCAAGTCAAAGCAAACGTTATTGGGC
TTAGGTGTGATCATTGCAATTTTGGATTTAAATTTCTCCGAAGCTTTAATGATGTTGGATGTGAGCCCTG
CCAGTGTAACTCCATGGCTCAGTGAACAAATTCGCAATCCTCACTCTGGGCAGTGTGAGTGCAAAAAA
GAAGCCAAAGGACTTCAGTGTGACACCTGCAGAGAAAATTTTATGGGTTAGATGCACCAATTGTAAGG
CCTGTGACTGTGACACAGCTGGATCCCTCCCTGGGACTGTCTGTAATGCTAAGACAGGGCAGTGCATCTG
CAAGCCCAATGTTGAAGGGAGACAGTGAATAAATGTTTGGAGGGAAACTTCTACCTACGGCAAAAATAAT
TCTTTCTCTGTCTGCCTTGCAACTGTGATAAGACTGGGACAATAAATGGCTCTCTGCTGTGTAACAAAT
CAACAGGACAATGTCTTGCAAATTAGGGTAACAGGTCTTCGCTGTAATCAGTGTGAGCCCTCACAGGTA
CAATTTGACCATTGACAATTTTCAACACTGCCAGATGTGTGAGTGTGATTCTTGGGGACATTACCTGGG
ACCATTTGTGACCAATCAGTGGCCAGTGCCTGTGTGTCCTAATCGTCAAGGAAGAAGGTGTAATCAGT
GTCAACCAGGTTTTTATATTTCTCCAGGCAATGCCACTGGCTGCCTGCCATGCTCATGCCATACAACCTGG
TGCAGTTAATCACATCTGTAATAGCCTGACTGGTCAAGTGTGTTGCCAAGATGCTCCATTGCTGGGCAA
CGTTGTGACCAATGCAAAGACCATTACTTTGGATTTGATCCTCAGACTGGAAGATGTCAGCCTTGTAAAT
GTCATCTCTCAGGAGCCTTGAATGAAACCTGTCACTTGGTCAAGGCAAGTGTGTTTCAACAATTTGT
CACTGGCTCAAAGTGTGATGCTTGTGTTCCAGTGCAGCCACTTGGATGTCAACAATCTATTGGGTTGC
AGCAAAAATCCATTCCAGCAACCTCCGCCAGAGGACAAGTTCAAAGTCTTCTGCTATCAATCTCTCCT
GGAGTCCACCTGATTCTCAAATGCCACTGGCTTACTTACAGTTTACTCAGGGATGGTTTTGAAATCTA
CACAACAGAGGATCAATACCCATACAGTATTCAATACTTCTTAGACACAGACCTGTTACCATATACCAAA
TATTCCTATTACATTGAGACCACCAATGTGCATGGTTCAACAAGGAGTGTAGCTGCACTTACAAGACAA
AACCAGGGTCCCAGAGGAACTTGACTTTAAGTTATATCATTCTATTGGCTCAGACTCTGTGACACT
TACCTGGACAACACTCTCAAATCAATCTGGTCCCATAGAGAAATATATTTGCTCTGCCCTTTGGCT
GGTGGTACGCCATGTGTTTCTACGAAGTTCATGAAACCTCAGCTACCATCTGGAATCTGGTTCCATTTG
CCAAGTACGATTTTTCTGTACAGGCGTGTACTAGCGGGGCTGTTTACACAGCTTGCCCATACAGTGAC
CACAGCCCAGGCCCTCCCAAAGACTAAGTCCACCTAAGATGCAGAAAATCAGTTCTACAGAACTTCAT
GTAGAATGGTCTCCACCAGCGGAACTAAATGGAATAATTATAAGATATGAACTATACATGAGAAGACTGA
GATCTACTAAAGAAACCACATCTGAGGAAAGTCGAGTTTTTTCAGAGCAGTGGTTGGCTCAGTCTCATTC
ATTTGTAGAATCGGCAATGAAAATGCATTAACCTCCTCAAACAATGACAACCATCACTGGCTTGGAG
CCATACACCAAGTATGAGTTCAGAGTCTTAGCTGTGAATATGGCTGGAAGTGTGCTTCTGCCTGGGTCT
CAGAAAAGAACGGGAGAATCAGCACCTGTATTATGATCCCTCCTCAGTCTTTCCCTCTCTTCTGACTC
TCTCAATATCTCCTGGGAGAAGCCAGCAGATAATGTTACAAGAGGAAAAGTTGTGGGGTATGACATCAAT
ATGCTTTCTGAACAATCACCTCAACAGTCTATCCCATGGCGTTTTTACAGCTGTTGCACACTGCTAAAT
CCCAAGAATATCTTACTGTAGAAGGACTGAAACCTTATAGGATATATGAGTTTACTATTACTCTCTG
CAATTCAGTTGGTTGTGTGACCAGTGTCTCGGGAGCAGGACAACTTTAGCAGCAGCACCAGCACAACTG
AGGCCACCTCTGGTTAAAGGAATCAACAGCACAAATCCATCTTAAGTGGTTTCCACTGAAGAAGTGA
ATGGACCCTCTCCTATATACAGCTGGAAGGAGAGAGTCACTCTACCAGCTCTGATGACCACGATGAT
GAAAGGAATCCGTTTATAGGAAATGGGTATTGTAATTTCCAGCTCCACTACCCAGTCAATACAGAC
TTCCTGGTAAGTGTGTT

ACGCGTACGCGGCCGCTCGAG - GFP Tag - GTTTAA

Protein Sequence: >RG221475 representing NM_007123
 Red=Cloning site Green=Tags(s)

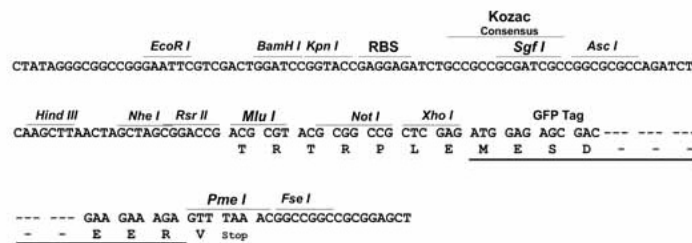
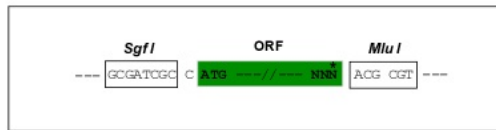
MNCPVLSLGSGLFQVIEMLI FAYFASISL TESRGLFPRENVGAFKKVSI VPTQAVCGLPDRSTFC HSS
 AAESI QFCTQRFCIQDCPYRSSHPTYTALFSAGLSSCITPDKNDLHPNAHSNSASFIFGNHKSCFSSPP
 SPKLMASFTLAVWLKPEQQGVMCVIEKTVDGQIVFKLTI SEKETMFYVRTV NGLQPPIKVMTLGRILVKK
 WIHL SVQVHQTKISFFINGVEKDHTPFNARTLSGSITDFASGTVQIGQSLNGLEQFVGRMQDFRL YQVAL
 TNREILEVFSGDLLRLHAQSHCRCPGSHPRVHPLAQRYCIPNDAGDTADNRVSRNLNPEAHL SFVNDNDV
 GTSWVSNVFTNITQLNQGV TISVDLENGQYQVFYII IQFFSPQPT EIRIQRKKENSLDWDWQYFARNCG
 AFGMKNNGDLEKPD SVNCLQLSNFTPYSRGNVTF SILTPGPNYRPGYNNFYNTPSLQEFVKATQIRFHFH
 GQYTTETAVNLRHRYAYDEITISGRQCCHGHADNCDTTSQPYRCLCSQESFTEGLHCDRCLPL YNDKP
 FRQGDQVYAFNCKPCQCNSHKSCHYNI SVDPFPFEHFRGGGVCDDCEHNTTGRNCELCKDYFFRQVGA
 DPSAIDVCKPCDCDVTGTRNGSILCDQIGGQCCKRHVSGRQCNCQNGFYNLQELDPDGCSPCNCNTSG
 TVDGDITCHQNSGQCKKANVIGLRCDHCNFGFKFLRSFNDVGCPCQCNLHGSVNKFCNPHSGQCECKK
 EAKGLQCDTCRENFYGLDVTNCKACDCD TAGSLPGTVCAKTGQCICKPNVEGRQCNKCLEGNFYLRQNN
 SFLCLPCNCDKTGTINGSL LCNKSTGQCPCKLGVTGLRCNQCEPHRYNLTIDNFQHCQMCECDSLGTLPG
 TICDPI SGGQCLCVPNRQRRNCQCPGFYISPGNATGCLPCSCHTTGAVNHCNLSLTGQCVCQDASIAGQ
 RCDQCKDHYFGFDPQTGRQCPCNCHLSGALNETCHLV TGQCFCQKFVTGSKDACVPSASHLDVNNLLGC
 SKTPFQQPPRQVQSSA INLSWSPDPSNAHWL TYSLLRDGFEIYTTEDQYPYSIQYFLDLDLLPYTK
 YSYYIETNVHGSTRSVAVTYKTKPGVPEGNL TSYIIPIGSDSVTLTWTTLSNQSGPIEKYILSCAPLA
 GGQPCVSYEGHETSATIWNLV PFAKYDFSVQACTSGGCLHSLPITVTTAQAPPQRLSPPKMQKISSTELH
 VEWSPPAELNGIIRYEL YMRRLRSTKETTSESRVFQSSGWLSPHSFVESANENALKPPQTMTTITGLE
 PYTKYEFRLAVNMAGSVSSAWV SERTGESAPVFMIPPSVFP LSSYSLNISWEKPADNVTRGKVGYDIN
 MLSEQSPQSQIPMAFSQLLHTAKSQELS YTV EGLKPYRIYEFTITL CNSVGCVT SASGAGQTLAAAPAQL
 RPPLVKGINSTT IHLKWFPEELNGPSP IYQLERRESSLPALMTTMMKGI RFIGNGYCKFPSSSTHPVNTD
 FTGKCV

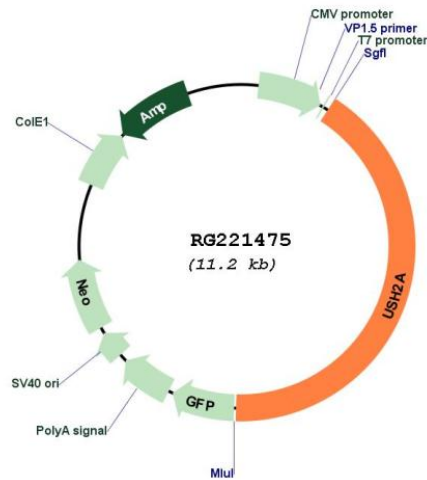
TRTRPLE - GFP Tag - V

Restriction Sites: SgfI-MluI

Cloning Scheme:

Cloning sites used for ORF Shutting:



Plasmid Map:


ACCN: NM_007123

ORF Size: 4638 bp

OTI Disclaimer: The molecular sequence of this clone aligns with the gene accession number as a point of reference only. However, individual transcript sequences of the same gene can differ through naturally occurring variations (e.g. polymorphisms), each with its own valid existence. This clone is substantially in agreement with the reference, but a complete review of all prevailing variants is recommended prior to use. [More info](#)

OTI Annotation: This clone was engineered to express the complete ORF with an expression tag. Expression varies depending on the nature of the gene.

Components: The ORF clone is ion-exchange column purified and shipped in a 2D barcoded Matrix tube containing 10ug of transfection-ready, dried plasmid DNA (reconstitute with 100 ul of water).

Reconstitution Method:

1. Centrifuge at 5,000xg for 5min.
2. Carefully open the tube and add 100ul of sterile water to dissolve the DNA.
3. Close the tube and incubate for 10 minutes at room temperature.
4. Briefly vortex the tube and then do a quick spin (less than 5000xg) to concentrate the liquid at the bottom.
5. Store the suspended plasmid at -20°C. The DNA is stable for at least one year from date of shipping when stored at -20°C.

RefSeq: [NM_007123.5](#), [NP_009054.5](#)

RefSeq Size: 6332 bp

RefSeq ORF: 4641 bp

Locus ID: 7399

UniProt ID: [O75445](#)

Cytogenetics: 1q41

Protein Families: Transmembrane

Gene Summary: This gene encodes a protein that contains laminin EGF motifs, a pentaxin domain, and many fibronectin type III motifs. The protein is found in the basement membrane, and may be important in development and homeostasis of the inner ear and retina. Mutations within this gene have been associated with Usher syndrome type IIa and retinitis pigmentosa. Multiple transcript variants encoding different isoforms have been found for this gene. [provided by RefSeq, Dec 2008]