

Product datasheet for **RG221468**

IRTA2 (FCRL5) (NM_031281) Human Tagged ORF Clone

Product data:

Product Type:	Expression Plasmids
Product Name:	IRTA2 (FCRL5) (NM_031281) Human Tagged ORF Clone
Tag:	TurboGFP
Symbol:	IRTA2
Synonyms:	BXMAS1; CD307; CD307e; FCRH5; IRTA2; PRO820
Mammalian Cell Selection:	Neomycin
Vector:	pCMV6-AC-GFP (PS100010)
E. coli Selection:	Ampicillin (100 ug/mL)



[View online »](#)

ORF Nucleotide Sequence:

>RG221468 representing NM_031281
 Red=Cloning site Blue=ORF Green=Tags(s)

TTTTGTAATACGACTCACTATAGGGCGGCCGGGAATTCGTCGACTGGATCCGGTACCGAGGAGATCTGCC
 GCC**GCGATCGCC**

ATGCTGCTGTGGGTGATATTACTGGTCCTGGCTCCTGTCACTGGACAGTTTGAAGGACACCCAGGCCCA
 TTATTTTCTCCAGCCTCCATGGACCACAGTCTTCCAAGGAGAGAGAGTACCCTCACTTGAAGGATT
 TCGCTTCTACTACCCACAGAAAACAAAATGGTACCATCGGTACCTTGGGAAAGAAATACTAAGAGAAACC
 CCAGACAATATCCTTGAGGTTCCAGGAATCTGGAGAGTACAGATGCCAGGCCAGGGCTCCCTCTCAGTA
 GCCCTGTGCACTTGGATTTTCTCAGCTTCGCTGATCCTGCAAGCTCCACTTTCTGTGTTGAAGGAGA
 CTCTGTGGTTCTGAGGTGCCGGCAAAGGCGGAAGTAACACTGAATAATACTATTTACAAGAATGATAAT
 GTCCTGGCATTCCCTAATAAAAAGAACTGACTTCCATATTCCTCATGCATGTCTCAAGGACAATGGTGCAT
 ATCGCTGACTGGATATAAGGAAAGTTGTTGCCCTGTTTCTTCCAATACAGTCAAATCCAAGTCCAAGA
 GCCATTTACACGTCCAGTCTGAGAGCCAGCTCCTTCCAGCCATCAGCGGGAACCCAGTGACCCTGACC
 TGTGAGACCCAGCTCTCTAGAGAGGTCAGATGTCCCGCTCCGTTCCGCTTCTCAGAGATGACCAGA
 CCCTGGGATTAGGCTGGAGTCTCTCCCGAATTTCCAGATTACTGCCATGTGGAGTAAAGATTACAGGTT
 CTAAGTGTGAAGGCAGCAACAATGCCTCACAGCGTCATATCTGACAGCCGAGATCCTGGATACAGGTG
 CAGATCCCTGCATCTCATCCTGTCTCACTCTCAGCCCTGAAAAGGCTCTGAATTTTGAAGGAAACCAAGG
 TGACACTTCACTGTGAAACCCAGGAAGATTCTCTGCGCACTTTGTACAGGTTTTATCATGAGGGTGTCCC
 CCTGAGGCACAAGTCAGTCCGCTGTGAAAGGGGAGCATCCATCAGCTTCTCACTGACTACAGAGAATTCA
 GGAACACTACTGCACAGCTGACAATGGCCTTGGCGCAAGCCAGTAAGGCTGTGAGCCTCTCAGTCA
 CTGTTCCCGTGTCTCATCCTGTCTCAACCTCAGCTCTCCTGAGGACCTGATTTTTGAGGAGCCAAAGT
 GACACTTCACTGTGAAGCCAGAGAGGTTCACTCCCATCCTGTACCAGTTTCATCATGAGGATGCTGCC
 CTGGAGCGTAGGTCGGCCAACCTGTCAGAGGAGTGGCCATCAGCTTCTCTGACTGCAGAGCATTGAG
 GAACTACTACTGCACAGCTGACAATGGCTTTGGCCCCAGCGCAGTAAGGCGGTGAGCCTCTCCATCAC
 TGTCCCTGTGTCTCATCCTGTCTCACCTCAGCTCTGCTGAGGCCCTGACTTTTGAAGGAGCCACTGTG
 ACACTTCACTGTGAAGTCCAGAGAGGTTCCCAACAATCCTATACCAGTTTTATCATGAGGACATGCCCC
 TGTGGAGCAGCTCAACACCCTCTGTGGGAAGAGTGTCTTCACTTCTCTGACTGAAGGACATTGAGG
 GAATTAATACTGCACAGCTGACAATGGCTTTGGTCCCCAGCGCAGTGAAGTGGTGAAGCCTTTTGTCACT
 GTTCCAGTGTCTGCCCCATCCTCACCTCAGGGTCCCAGGGCCAGGCTGTGGTGGGGACCTGCTGG
 AGCTTCACTGTGAGGCCCGAGAGGCTCTCCCAATCCTGTACTGGTTTTATCATGAGGATGTCACCCCT
 GGGGAGCAGCTCAGCCCCCTCTGGAGGAGAAGCTTCTTCAACCTCTCTGACTGCAGAACATTCTGGA
 AACTACTCATGTGAGGCCAACAATGGCCTAGTGGCCAGCACAGTACACAATATCACTCAGTGTATAG
 TTCCAGTATCTCGTCCCATCCTCACCTCAGGGCTCCCAGGGCCAGGCTGTGGTGGGGACCTGCTGGA
 GCTTCACTGTGAGGCCCTGAGAGGCTCTCCCAATCCTGTACTGGTTTTATCATGAAGATGTCACCCTG
 GGTAAGATCTCAGCCCCCTCTGGAGGAGGGCCTCCTTCAACCTCTCTGACTACAGAACATTCTGGAA
 TCTACTCTGTGAGGCAGACAATGGTCTGGAGGCCAGCGCAGTGAAGTGGTGAAGTGAAGTGGTGAAGT
 TCCGGTGTCTCGCCCGTCTCACCTCAGGGCTCCCAGGGACCCATGCTGCGGTGGGGACCTGCTGGAG
 CTTCACTGTGAGGCCCTGAGAGGCTCTCCCTGATCCTGTACCAGTTTTTTCATGAGGATGTCACCCTAG
 GAAATAGGTCGTCCTCTGGAGGAGGCTCCTTAAACCTCTCTGACTGCAGAGCACTCTGAAACTA
 CTCCTGTGAGGCCGACAATGGCCTCGGGGCCAGCGCAGTGAAGCAGTGAACACTTATATCACAGGGCTG
 ACCGCGAACAGAAAGTGGCCCTTTTGGCACAGGAGTCCCGGGGGCCTGCTCAGCATAGCAGGCTTGTG
 CGGGGGCACTGCTGCTACTGCTGGCTCTCGAGAAAAGCAGGGGAGAAAGCCTGCTGACCCCGCCAG
 GAGCCCTCAGACTCGGACTCCCAAGAGCCACCTATACAATGTACCAGCCTGGGAAGAGCTGCAACCA
 GTGTACACTAATGAAAATCCTAGAGGAGAAAATGTGGTTACTCAGAAGTACGGATCATCAAGAGAAAA
 AGAAACATGCAGTGGCCTGACCCAGGCATCTCAGGAACAAGGTTCCCTATCATCTACTCTGAAGT
 TAAGGTGGCTCAACCCCGGTTCCGGATCCCTGTTCTTGGCTTCTCAGCTCCTCACAGA

ACGCGTACGCGGCCGCTCGAG - GFP Tag - GTTTAA

Protein Sequence: >RG221468 representing NM_031281
Red=Cloning site Green=Tags(s)

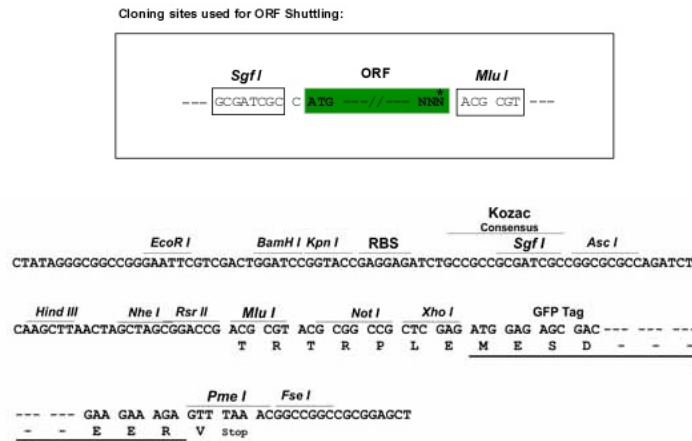
```

MLLWVILLVLAPVSGQFARTPRPIIFLQPPWTTVFQGERVTLTCKGFRFYSPQTKWYHRYLGKEILRET
PDNILEVQESGEYRCQAQGSPLSSPVHLDFSSASLILQAPLSVFEGDSVVLRCRAKAEVTLNNTIYKNDN
VLAFLNKRTRDFHIPHACLKDNAYRCTGYKESCCPVSSNTVKIQVQEPFTRPVLRASSFQPIISGNPVTLT
CETQLSLERSDVPLRFRFRDDQTLGLGWSLSPNFQITAMWSKDSGFYWCKAATMPHSVSDSPRSWIQV
QIPASHPVLTLSPEKALNFEGTKVTLHCETQEDSLRTLRYFYHEGVPLRHKSVRCERGASISFSLTTENS
GNYCYCTADNGLGAKPSKAVSLSVTPVPSHPVLNLSPEDLIFEGAKVTLHCEAQRGSLPILYQFHEDAA
LERRSANSAGGVAISFSLTAEHSGNYCYCTADNGFGPQRSKAVLSITVPVPSHPVLTSSAEALTFEGATV
TLHCEVQRGSPQILYQFYHEDMPLWSSSTPSVGRVSFSFSLTEGHSGNYCYCTADNGFGPQRSEVVSFLVT
VPVSRPILTLRVPRAQAVVDLLELHCEAPRGSPPILYWFYHEDVTLGSSSAPSGGEASFNLSLTAEHSG
NYSCEANGLVAQHSDTISLSVIVPSRPILTFRAPRAQAVVDLLELHCEALRGSSPILYWFYHEDVTL
GKISAPSGGGASFNLSLTTEHSGIYSCEADNGLEAQRSEMVTLKVAVPSRPVLTLRAPGTHAAVGDLE
LHCEALRGSPILYRFFHEDVTLGNRSSPSGGASLNLSLTAEHSGNYSCEADNGLGAQRSETVTLYITGL
TANRSGPFATGVAGLLSIAGLAAGALLLYCWL SRKAGRKPASDPARSPSDSDSQEPTYHNVPWEELQP
VYTANPRGENVVYSEVRIIQEKKKHAVASDPRLRNKGSPIIYSEVKVASTPVSGSLFLASSAPHR
    
```

TRTRPLE - GFP Tag - V

Restriction Sites: SgfI-MluI

Cloning Scheme:

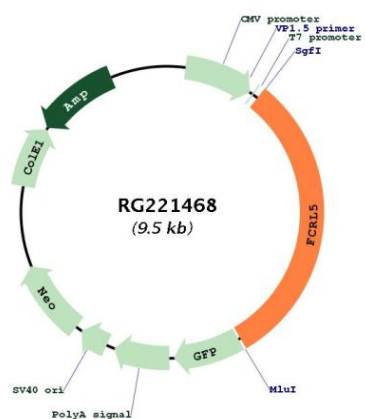


ACCN: NM_031281

ORF Size: 2931 bp

OTI Disclaimer:	The molecular sequence of this clone aligns with the gene accession number as a point of reference only. However, individual transcript sequences of the same gene can differ through naturally occurring variations (e.g. polymorphisms), each with its own valid existence. This clone is substantially in agreement with the reference, but a complete review of all prevailing variants is recommended prior to use. More info
OTI Annotation:	This clone was engineered to express the complete ORF with an expression tag. Expression varies depending on the nature of the gene.
Components:	The ORF clone is ion-exchange column purified and shipped in a 2D barcoded Matrix tube containing 10ug of transfection-ready, dried plasmid DNA (reconstitute with 100 ul of water).
Reconstitution Method:	<ol style="list-style-type: none">1. Centrifuge at 5,000xg for 5min.2. Carefully open the tube and add 100ul of sterile water to dissolve the DNA.3. Close the tube and incubate for 10 minutes at room temperature.4. Briefly vortex the tube and then do a quick spin (less than 5000xg) to concentrate the liquid at the bottom.5. Store the suspended plasmid at -20°C. The DNA is stable for at least one year from date of shipping when stored at -20°C.
RefSeq:	NM_031281.1 , NP_112571.1
RefSeq Size:	5392 bp
RefSeq ORF:	2934 bp
Locus ID:	83416
UniProt ID:	Q96RD9
Cytogenetics:	1q23.1
Protein Families:	Transmembrane
Gene Summary:	This gene encodes a member of the immunoglobulin receptor superfamily and the Fc-receptor like family. This gene and several other Fc receptor-like gene members are clustered on the long arm of chromosome 1. The encoded protein is a single-pass type I membrane protein and contains 8 immunoglobulin-like C2-type domains. This gene is implicated in B cell development and lymphomagenesis. Alternatively spliced transcript variants encoding different isoforms have been identified. [provided by RefSeq, Sep 2010]

Product images:



Circular map for RG221468