

Product datasheet for **RG221460**

ZBTB8OS (NM_178547) Human Tagged ORF Clone

Product data:

Product Type: Expression Plasmids
Product Name: ZBTB8OS (NM_178547) Human Tagged ORF Clone
Tag: TurboGFP
Symbol: ZBTB8OS
Synonyms: ARCH; ARCH2
Mammalian Cell Selection: Neomycin
Vector: pCMV6-AC-GFP (PS100010)
E. coli Selection: Ampicillin (100 ug/mL)
ORF Nucleotide Sequence: >RG221460 representing NM_178547
Red=Cloning site Blue=ORF Green=Tags(s)

TTTTGTAATACGACTCACTATAGGGCGCCGGGAATTCGTCGACTGGATCCGGTACCGAGGAGATCTGCC
GCC**CGATCGCC**

ATGAAGGGCGGAAGTAGAGTGTCTAATCCTGCAGTCATGGCGCAGGAAGAGGAAGATGTTAGAGATTACA
ATTTGACTGAAGAACAGAAGCGCATCAAGGCCAAGTATCCGCCAGTCAATAGGAAGTACGAGTATTTGGA
TCATACAGCAGATGTCCAGTTACACGCATGGGAGATACTCTGGAGGAAGCATTGAGCAATGTGCAATG
GCCATGTTTGGTTACATGACAGATACTGGACAGTGGAGCCCTCAAACAGTAGAAGTAGAAACCCAAG
GAGATGACTTACAGTCTTCTGTTTCACTTTTTGGATGAATGGCTTTATAAGTTCAGTGCTGATGAATT
CTTCATACCCCGGAAGTGAAAGTACTTAGCATTGATCAAAGAAATTTCAAATTACGATCAATGGGTGG
GGAGAAGAATTTTCATTGTCCAAGCACCCCTCAGGGAACAGAAGTCAAAGCAATAACATATTCAGCAATGC
AGGTCTATAATGAAGAGAACCCGGAAGTTTTGTGATCATTGACATT

ACGCGTACGCGGCCGCTCGAG - GFP Tag - GTTTAA

Protein Sequence: >RG221460 representing NM_178547
Red=Cloning site Green=Tags(s)

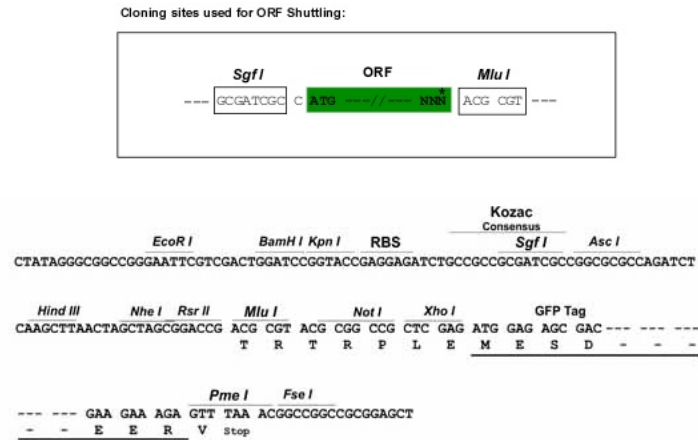
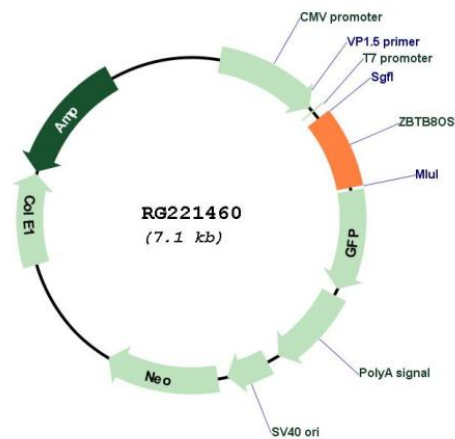
MKGGSRVSNPAVMAQEEEDVRDYNLTTEEQKAIKAKYPPVNRKYEYLDHTADVQLHAWGDTLEEAFFEQCAM
AMFGYMTDTGTVEPLQTVEVETQGDDLQSLLFHFLDEWLKFSADIEFFIPREVKVLSIDQRNFKLRISIGW
GEEFSLSKHPQGTEVKAITYSAMQVYNEENPEVFVIIDI

TRTRPLE - GFP Tag - V

Restriction Sites: SgfI-MluI



[View online »](#)

Cloning Scheme:

Plasmid Map:


ACCN: NM_178547

ORF Size: 537 bp

OTI Disclaimer: The molecular sequence of this clone aligns with the gene accession number as a point of reference only. However, individual transcript sequences of the same gene can differ through naturally occurring variations (e.g. polymorphisms), each with its own valid existence. This clone is substantially in agreement with the reference, but a complete review of all prevailing variants is recommended prior to use. [More info](#)

OTI Annotation: This clone was engineered to express the complete ORF with an expression tag. Expression varies depending on the nature of the gene.

Components:	The ORF clone is ion-exchange column purified and shipped in a 2D barcoded Matrix tube containing 10ug of transfection-ready, dried plasmid DNA (reconstitute with 100 ul of water).
Reconstitution Method:	<ol style="list-style-type: none">1. Centrifuge at 5,000xg for 5min.2. Carefully open the tube and add 100ul of sterile water to dissolve the DNA.3. Close the tube and incubate for 10 minutes at room temperature.4. Briefly vortex the tube and then do a quick spin (less than 5000xg) to concentrate the liquid at the bottom.5. Store the suspended plasmid at -20°C. The DNA is stable for at least one year from date of shipping when stored at -20°C.
RefSeq:	<u>NM_178547.4</u>
RefSeq Size:	717 bp
RefSeq ORF:	540 bp
Locus ID:	339487
UniProt ID:	<u>Q8IWT0</u>
Cytogenetics:	1p35.1
Gene Summary:	Component of the tRNA-splicing ligase complex required to facilitate the enzymatic turnover of catalytic subunit RTCB. Together with DDX1, acts by facilitating the guanylation of RTCB, a key intermediate step in tRNA ligation.[UniProtKB/Swiss-Prot Function]