

Product datasheet for **RG221455**

HES2 (NM_019089) Human Tagged ORF Clone

Product data:

Product Type: Expression Plasmids
Product Name: HES2 (NM_019089) Human Tagged ORF Clone
Tag: TurboGFP
Symbol: HES2
Synonyms: bHLHb40
Mammalian Cell Selection: Neomycin
Vector: pCMV6-AC-GFP (PS100010)
E. coli Selection: Ampicillin (100 ug/mL)
ORF Nucleotide Sequence: >RG221455 representing NM_019089
 Red=Cloning site Blue=ORF Green=Tags(s)

TTTTGTAATACGACTCACTATAGGGCGGCCGGAATTCGTCGACTGGATCCGGTACCGAGGAGATCTGCC
 GCC**CGATCGCC**

ATGGGGCTGCCTCGCCGGCAGGGGACGCGGGGAGCTGCGCAAGAGCCTGAAGCCGCTGCTGGAGAAGC
 GCCGGCGCGCGCATCAACCAGAGCCTGAGCCAGCTTAAGGGGCTCATCCTGCCGCTGCTGGGCCGGGA
 GAACTCCAAGTCTCGAAGCTAGAGAAGGCAGACGTCCTGGAAATGACCGTGCCTTCTGCAGGAGCTG
 CCTGCGTCTCATGGCCACGGCAGCGCCCTGCCTTGCACAGCTACCGGAGGGCTACAGCGCCTGTG
 TGGCGCGCTGGCCCGCTGCTGCCCGCTGCCGTGCTTGGAGCCCGCGTGAGCGCGCGCCTGCTGGA
 GCACCTGTGGCGGAGAGCGGCCAGCGCCACCCTGGACGGCGGGCGCGCTGGGGATTCCAGTGGCCCGTCT
 GCCCCCGCCCAGCGCCCGCTGCCCCAGAGCCCGCATCCGCTCCGGTGCCCTCGCCGCCCTCGCCTC
 CTGCGGCCCTGGCTCTGGCGGCCGTGG

ACGCGTACGCGGCCGCTCGAG - GFP Tag - GTTTAA

Protein Sequence: >RG221455 representing NM_019089
 Red=Cloning site Green=Tags(s)

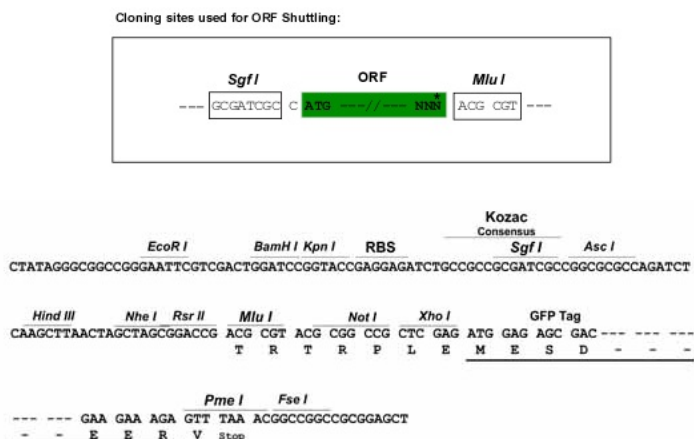
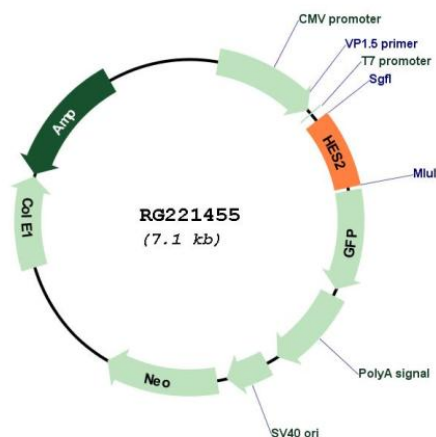
MGLPRRAGDAAELRKSLKPLLEKRRRARINQSLSQLKGLILPLLGRENSNCSKLEKADVLEMTVRFQLQEL
 PASSWPTAAPLPCDSYREGYSACVARLARVLPACRVLEPAVSARLLEHLWRAASATLDGGRAGDSSGSPS
 APAPAPASAPVSPSPSPPCGGLWRPW

TRTRPLE - GFP Tag - V

Restriction Sites: Sgfl-MluI



[View online »](#)

Cloning Scheme:**Plasmid Map:**

ACCN: NM_019089

ORF Size: 519 bp

OTI Disclaimer: The molecular sequence of this clone aligns with the gene accession number as a point of reference only. However, individual transcript sequences of the same gene can differ through naturally occurring variations (e.g. polymorphisms), each with its own valid existence. This clone is substantially in agreement with the reference, but a complete review of all prevailing variants is recommended prior to use. [More info](#)

OTI Annotation: This clone was engineered to express the complete ORF with an expression tag. Expression varies depending on the nature of the gene.

Components:	The ORF clone is ion-exchange column purified and shipped in a 2D barcoded Matrix tube containing 10ug of transfection-ready, dried plasmid DNA (reconstitute with 100 ul of water).
Reconstitution Method:	<ol style="list-style-type: none">1. Centrifuge at 5,000xg for 5min.2. Carefully open the tube and add 100ul of sterile water to dissolve the DNA.3. Close the tube and incubate for 10 minutes at room temperature.4. Briefly vortex the tube and then do a quick spin (less than 5000xg) to concentrate the liquid at the bottom.5. Store the suspended plasmid at -20°C. The DNA is stable for at least one year from date of shipping when stored at -20°C.
RefSeq:	<u>NM_019089.5</u>
RefSeq Size:	4259 bp
RefSeq ORF:	522 bp
Locus ID:	54626
UniProt ID:	<u>Q9Y543</u>
Cytogenetics:	1p36.31
Gene Summary:	Transcriptional repressor of genes that require a bHLH protein for their transcription. [UniProtKB/Swiss-Prot Function]