

Product datasheet for **RG221444**

CACTIN (NM_001080543) Human Tagged ORF Clone

Product data:

Product Type:	Expression Plasmids
Product Name:	CACTIN (NM_001080543) Human Tagged ORF Clone
Tag:	TurboGFP
Symbol:	CACTIN
Synonyms:	C19orf29; fSAPc; NY-REN-24
Mammalian Cell Selection:	Neomycin
Vector:	pCMV6-AC-GFP (PS100010)
E. coli Selection:	Ampicillin (100 ug/mL)



[View online »](#)

ORF Nucleotide Sequence:

>RG221444 representing NM_001080543
 Red=Cloning site Blue=ORF Green=Tags(s)

TTTTGTAATACGACTCACTATAGGGCGGCCGGAATTCGTCGACTGGATCCGGTACCGAGGAGATCTGCC
 GCC**CGGATCGCC**

ATGGGTCGGGACACACGCTCGCGCTCGCGGTCCGCGGGTCGCGGGCCGAAGGCGGCAGAGTCAGAGCG
 GGAGCCGAAGTCGGAGCAGGAGCCATGGGCGGCGAAACCGACGGCGCCGGAGGACGAGGGACGGCGCAG
 ACGGAGGCGGCGGAGCCGGGAGCGCAGGTCAAGATTCAGAGGAAGAGCGGTGGCAGCGCTCAGGGATGCGA
 AGCCGGAGCCCCCGCGGCCAAGTGGCACTCAAGAGATGGGTCTCTCAGTCGGACTCAGGAGAGGAGC
 AGTCACGGGGCCAGTGGGCTCGCCGGGACGGCGCGCACGCTCGTGGTCTCCTAGCTCCTCAGCATCCAG
 CTCCGCGTCTCCAGGGGATCCCAGAGCCCCGGGCGGCCGCGGTGCCCTGAGCCAGCAGCAGAGCCTG
 CAGGAGCGGCTGCGGCTGCGGGAGGAGCGGAAGCAGCAGGAGGAGCTGATGAAGGCCTTCGAGACGCCCC
 AGGAGAAGCGCGACGGCGGCTGGCCAAGAAGGAGGCCAAGGAGCGCAAGAAGCGGGAGAAGATGGGCTG
 GGGTGAGGAGTACATGGGCTACACCAACACCGACAACCCCTTCGAGAGACAACAACCTGCTGGGCACCTTC
 ATCTGGAATAAGGCCCTGGAGAAGAAGGGGATCAGCCACCTGGAGGAGAAGGAGCTGAAGGAGCGGAACA
 AGAGGATCCAGGAGGACAACCGGCTGGAGCTGCAGAAGGTGAAGCAGCTGCGGCTGGAGCGGGAGCGGGGA
 GAAGGCCATGCGCGAGCAGGAGCTGGAGATGCTGCAGCGCGAGAAGGAGGACAGCACTTCAAGACATGG
 GAGGAGCAGGAGGACAACCTCCACCTCCAGCAGGCCAAGTGCCTTCAAGATCCGCATCCGGGACGGGC
 GGGCCAAGCCATCGACCTGCTGGCCAAGTACATCAGCGCTGAGGATGACGATCTGGCCGTGGAGATGCA
 TGAGCCCTACAGTTCCTCAACGGCCTCACCCTGGCCGACATGGAGGACCTGCTGGAGGATATCCAGGTC
 TACATGGAGCTGGAGCAGGGCAAGAACGCCGACTTCTGGCGGGACATGACCACCATCACCAGGACGAGA
 TCTCAAGCTCCGAAGCTGGAGCCTCGGGCAAGGGGCCAGGTGAGCGCCGCGAGGGGGTCAACGCCTC
 CGTCAGCTCTGATGTGCAGTCGGTGTCAAGGGGAAGACATAACAACCAGCTGCAGGTCATCTCCAGGGC
 ATCGAGGGCAAAATCCGCGCTGGTGGCCCAACCTGGACATGGGCTACTGGGAGAGCCTCCTGCAGCAGC
 TTCGTGCCACATGGCACGGGCCGCGTGCCTGAGCGCCACCAGGACGTGCTGCGGCAGAAGCTGTACAA
 ACTGAAGCAGGAGCAGGGCGTGGAGAGCGAGCCGCTGTTCCCATCCTCAAGCAGGAGCCCCAGTCCCCC
 AGCCGCGAGCTGGAGCCTGAGGACGCGGCGCCACCCCGCCGGGCCCTCCTCGGAGGGCGGCCCGCGG
 AGGCCGAGGTGGACGGCGGACCCCGACAGAGGGCGACGGCGACGGGGACGGTGAAGGCGAGGGCGAGGG
 CGAGGCGGTGCTCATGGAGGAGGACCTGATCCAGCAGAGCCTGGACGACTACGACCGCGCAGGTACAGC
 CCGCGGCTGCTCACGGCGCACGAGCTGCCACTGGACGCGCACGTGCTGGAACCGGATGAGGACCTGCAGC
 GCCTGCAGCTCTCGCGCCAGCAGCTCCAGGTACGGGAGACGCCAGCGAGAGCGCCGAGGACATCTTCTT
 CCGGCGGGCAAGGAGGGCATGGGCCAGGACGAGGCGCAGTTCAGCGTGGAGATGCCACTCACCGGAAG
 GCCTACCTGTGGGCGGACAAGTACCGGCCACGCAAGCCGCGCTTCTTCAACCGCGTGCACACGGGCTTCG
 AGTGGAACAAGTACAACCAGACGCACTACGACTTTGACAACCCACCGCCCAAGATCGTGCAGGGATACAA
 GTTCAACATCTTCTACCCCGACCTCATCGACAAGCGCTCCACGCCCGGAGTACTTCTGGAGGCTGCGCC
 GACAACAAGGATTTCCGCATCCTGCGCTCCACGCGGGGCGCCCTACGAGGACATCGCTTTCAGATCG
 TCAACCGGAGTGGGAATACTCGCACCGCCACGGCTCCGCTGCCAGTTTGCCAACGGCATCTTCCAGCT
 GTGGTTCACTTCAAGCGCTACCGCTATCGGCGG

ACGCGTACGCGGCCGCTCGAG – GFP Tag – GTTTAA

Protein Sequence: >RG221444 representing NM_001080543
 Red=Cloning site Green=Tags(s)

MGRDTRSRSRSAGRRGRRRQSSQSGSRSRSRSHGRRNRRRREDEGRRRRRRSRERRSDSEERWQRSGMRSRSPRPKWHSRDGSQSDSGEEQSRGQWARRRRRARSWSPSSSASSASPGRSQSPRAAAAALSQQSLQERLRLREERKQQEELMKAFETPEEKRRRLAKKEAKERKKREKMGWGEEYMGYNTDNPFGDNNLLGTFIWNKALEKKGISHLEEKELKERNKRIQEDNRELQKVKQLRLEREREKAMREQELEMLQREKEAEHFKTWEEQEDNFHLQQAKLRSKIRIRDGRAKPIDLLAKYISAEDDDLAVEMHEPYTFLNGLTVADMEDLLEDIQVYMELEQGNADFWRDMTTITEDEISKLRKLEASGKGPGERREGVNASVSSDVQSVFKGKTYNQLQVIFQGIIEGKIRAGGNLDMGYWESLLQQLRAHMARARLRERHQDVLRLQKLYKQEQGVESEPLFPILKQEPQSPSRSLPEDAAPTTPPGPSSEGGPAEAEVDGATPTEGDGDGEGEGEAVLMEEDLIQQSLDDYDAGRYSRLLTAHELPLDAHVLEPDEDLQRLQLSRQQLQVTGDASESAEDIFFRRAKEGMGQDEAQFVEMPLTGKAYLWADKYRPRKPRFFNRVHTGFENKYNQTHYDFDNPPIVQGYKFNIFYPDLIDKRSTPEYFLEACADNKDFAILRFHAGPPYEDIAFKIVNREWEYSHRHGFRCQFANGIFQLWFHFKRYRYRR

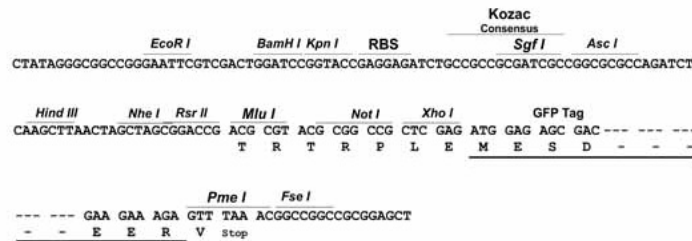
TRTRPLE - GFP Tag - V

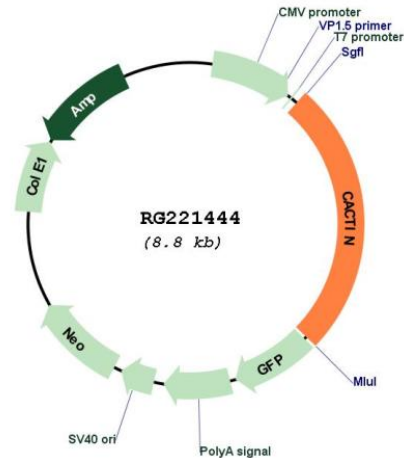
Restriction Sites:

SgfI-MluI

Cloning Scheme:

Cloning sites used for ORF Shutting:



Plasmid Map:


ACCN: NM_001080543

ORF Size: 2274 bp

OTI Disclaimer: The molecular sequence of this clone aligns with the gene accession number as a point of reference only. However, individual transcript sequences of the same gene can differ through naturally occurring variations (e.g. polymorphisms), each with its own valid existence. This clone is substantially in agreement with the reference, but a complete review of all prevailing variants is recommended prior to use. [More info](#)

OTI Annotation: This clone was engineered to express the complete ORF with an expression tag. Expression varies depending on the nature of the gene.

Components: The ORF clone is ion-exchange column purified and shipped in a 2D barcoded Matrix tube containing 10ug of transfection-ready, dried plasmid DNA (reconstitute with 100 ul of water).

Reconstitution Method:

1. Centrifuge at 5,000xg for 5min.
2. Carefully open the tube and add 100ul of sterile water to dissolve the DNA.
3. Close the tube and incubate for 10 minutes at room temperature.
4. Briefly vortex the tube and then do a quick spin (less than 5000xg) to concentrate the liquid at the bottom.
5. Store the suspended plasmid at -20°C. The DNA is stable for at least one year from date of shipping when stored at -20°C.

RefSeq: [NM_001080543.2](#)

RefSeq Size: 3625 bp

RefSeq ORF: 2277 bp

Locus ID: 58509

UniProt ID: [Q8WUQ7](#)

Cytogenetics: 19p13.3

Gene Summary: Involved in the regulation of innate immune response. Acts as negative regulator of Toll-like receptor and interferon-regulatory factor (IRF) signaling pathways. Contributes to the regulation of transcriptional activation of NF-kappa-B target genes in response to endogenous proinflammatory stimuli. May play a role during early embryonic development. Probably involved in pre-mRNA splicing.[UniProtKB/Swiss-Prot Function]