

## Product datasheet for **RG221440**

### PTPRS (NM\_002850) Human Tagged ORF Clone

#### Product data:

Product Type:	Expression Plasmids
Product Name:	PTPRS (NM_002850) Human Tagged ORF Clone
Tag:	TurboGFP
Symbol:	PTPRS
Synonyms:	PTPSIGMA; R-PTP-S; R-PTP-sigma
Mammalian Cell Selection:	Neomycin
Vector:	pCMV6-AC-GFP (PS100010)
E. coli Selection:	Ampicillin (100 ug/mL)
ORF Nucleotide Sequence:	>RG221440 representing NM_002850 Red=Cloning site Blue=ORF Green=Tags(s)

TTTGTAAATACGACTCACTATAGGGCGGCCGGAATTCGTCGACTGGATCCGGTACCGAGGAGATCTGCC  
GCC**CGATCGCC**

ATGGCGCCACCTGGGGCCCTGGCATGGTGTCTGTGGTTGGTCCCATGGGCCTCCTGTGGTCTGCTCG  
TTGGAGGCTGTGCAGCAGAAGAGCCCCCAGGTTTATCAAAGAACCAAGGACCAGATCGGCGTGTGGG  
GGGTGTGGCCTCTTTCGTGTGTACAGGCCACGGGTGACCCCAAGCCACGAGTGACCTGGAACAAGAAGGGC  
AAGAAGGTCAACTCTCAGCGCTTGTAGACGATTGAGTTTGTAGAGTGCAGGGGAGTGTGAGGATCC  
AGCCGCTGAGGACACCGCGGGATGAAAACGTGTACGAGTGTGTGGCCAGAACTCGGTTGGGGAGATCAC  
AGTCCATGCCAAGCTTACTGTCTCCGAGAGGACGAGTGCCCTCTGGCTTCCCAACATCGACATGGGC  
CCACAGTTGAAGGTGGTGGAGCGGACACGGACAGCCACCATGCTCTGTGCAGCCAGCGGCAACCTGACC  
CTGAGATCACCTGGTTCAAGGACTTCTGCCTGTGGATCCTAGTGCCAGCAATGGACGCATCAAACAGCT  
GCGATCAGAAACCTTTGAAAGCACTCCGATTTCGAGGAGCCCTGCAGATTGAAAGCAGTGAGGAAACCGAC  
CAGGGCAAATATGAGTGTGTGGCCACCAACAGCGCCGCGTGGCTACTCCTCACCTGCCAACCTCTACG  
TGCGAGAGCTTCGAGAAGTCCGCCGCGTGGCCCCGCGCTTCTCCATCCTGCCATGAGCCACGAGATCAT  
GCCAGGGGGAACGTGAACATCACCTGCGTGGCCGTGGGCTCGCCATGCCATACGTGAAGTGGATGCAG  
GGGGCCGAGGACCTGACCCCGAGGATGACATGCCCGTGGGTGGAACGTGCTGGAACCTCACAGATGTCA  
AGGACTCGGCCAACTACACCTGCGTGGCCATGTCCAGCCTGGGCGTCATTGAGGCGGTTGCTCAGATCAC  
GGTGAAATCTCTCCCAAGCTCCCGGACTCCCATGGTGAAGTGAAGACAGCCACCAGCATCACCATC  
ACGTGGGACTCGGGCAACCCAGATCCTGTGTCTATTACGTATCGAATATAAATCCAAGAGCCAAGACG  
GGCCGTATCAGATTAAAGAGGACATCACCACCACAGTTACAGCATCGGCGGCTGAGCCCCAACTCGGA  
GTACGAGATCTGGGTGTGGCCGTCAACTCCATCGGCCAGGGGCCCCCAGCGAGTCCGTGGTCAACCGC  
ACAGGCGAGCAGGCCCGGCCAGCGCGCCGGAACGTGCAAGCCGGATGCTCAGCGGACACCATTGA  
TTGTGAGTGGGAGGAGCGGTGGAGCCCAACGCGCTGATCCGCGCTACCGGCTCTACTACCATGGA  
ACCGGAGCACCCGTGGGCAACTGGCAGAAGACAACGTGGACGACAGCCTGCTGACCACCGTGGGCAGC



[View online »](#)

CTGCTGGAGGACGAGACCTACACCGTGC GG GTGCTCGCCTTACCTCCGTGCGCGACGGGCCCCCTCTCGG  
 ACCCATCCAGGTCAAGACGCAGCAGGGAGTGCCGGGCCAGCCATGAACCTGCGGGCCGAGGCCAGGTG  
 GGAGACCAGCATCACGCTGTCTGGAGCCCCCGCGGCAGGAGATATCATCAAGTACGAGCTCCTCTTC  
 CGGGAAGGCGACCATGGCCGGGAGGTGGGAAGGACCTTCGACCCGACGACTTCTACGTGGTGGAGGACC  
 TGAAGCCCAACACGGAGTACGCCTTCCGCCTGGCGGCCGCTCGCCGACGGGCTGGGCGCCTTACCCCC  
 CGTGGTGGCGCAGCGACGCTGCAGTCCAAACCGTCAGCCCCCTCAAGACGTTAAATGTGTACGCGTG  
 CGCTCCACGGCCATTTTGGTAAGTTGGCGCCCGCCGCGGAAACGCACAACGGGGCCCTGGTGGGCT  
 ACAGCGTCCGCTACCGACCGCTGGGCTCAGAGGACCCGGAACCCAAGGAGGTGAACGGCATCCCCCGAC  
 CACCACTCAGATCCTGCTGGAGGCTTGGAGAAGTGGACCCAGTACCGCATCACGACTGTGCTCACACA  
 GAGGTGGGACCAGGGCCCGAGAGCTCGCCCGTGGTCTCGCACCGACGAGGATGTGCCAGCGCGCCG  
 CGCGGAAGGTGGAGGCGGAGGCGCTCAACGCCACGGCCATCCGCGTGTGTGGCGCTCGCCCGCGCCG  
 CCGGCAGCAGGCCAGATCCGCGCTACAGGTCCACTACGTGCGCATGGAGGGCGCCGAGGCCCGCGG  
 CCGCCGCGCATCAAGGACGTATGCTGGCCGATGCCAGTGGGAGACGGATGACACGGCCGAATATGAGA  
 TGGTCATCACAACTTGACGCTGAGACCGGTACTCCATCACGGTAGCCGCTACACCATGAAGGGCGA  
 TGGCGCTCGCAGCAAACCAAGGTGGTTGTGACCAAGGAGCAGTGTGGCCGCCAACCTGTGCGGTG  
 CAGCAGACCCCCGAGGGCAGCCTGCTGGCACGCTGGGAGCCCCCGCTGGCACCGCGAGGACAGGTGC  
 TGGGCTACCGCTGCAGTTTGGCCGTGAGGACTCGACGCCCTGGCCACCCTGGAGTTCCCGCCCTCCGA  
 GGACCGCTACACGGCATCAGGCGTGCACAAGGGGGCCACGTATGTGTTCCGGCTTGGCGCCCGAGCCGC  
 GGCGGCTGGGCGAGGAGGCAGCCGAGGTCTGAGCATCCCGGAGGACACGCCCCGTGGCCACCCGAGA  
 TTCTGGAGGGCGCCGCAACGCCTCGGCCGGGACCGTCTTCTCCGCTGGCTGCCACCCGTGCCGCCGA  
 GCGCAACGGGGCCATCGTCAATACACGGTGGCCGTGCGGGAGGCCGGTGCCCTGGGCCCTGCCGAGAG  
 ACTGAGCTGCCGCGAGCGGTGAGCCGGCGCGGAGAACGCGCTCACGCTGCAGGGCTGAAGCCCGACA  
 CGGCCTATGACCTCCAAGTGCAGGCCACACGCGCCGGGGCCCTGGCCCCCTCAGCCCCCGGTCCGCTA  
 CCGGACGTTCTCGCGGACCAAGTCTCGCCCAAGAACTCAAGGTGAAAATGATCATGAAGACATCAGATT  
 CTGCTCAGCTGGGAGTTCCCTGACAACCTACAACCTACCCACACCTACAAGATCCAGTACATGGGCTCA  
 CACTGGATGTGGATGGCCGTACCACCAAGAAGCTCATCACGCACCTAAGCCCCACACCTTCTACAACCT  
 TGTGCTGACCAATCGCGGCAGCAGCTGGGCGGCTCCAGCAGACGGTACCGCCTGGACTGCCTTCAAC  
 CTGCTCAACGGCAAGCCAGCGTCGCCCCAAGCCTGATGCTGACGGCTTCATCATGGTGTATCTTCTG  
 ACGGCCAGAGCCCCGTGCCTGTCCAGAGCTATTTATTGTGATGGTGCCACTGCGCAAGTCTCGTGGAGG  
 CCAATTCCTGACCCCGCTGGGTAGCCAGAGGACATGGATCTGGAAGAGCTCATCCAGGACATCTACGG  
 CTACAGAGGCGCAGCCTCGGCACTCGCGTCAGCTGGAGGTGCCCGGCCCTATATTGCAGCTCGCTTCT  
 CTGTGCTGCCACCCACGTTCCATCCCGCGACCAAGCAGTATGGCGGCTTCGATAACCGGGGCTTGA  
 GCGCGGCCACCGTATGTCTCTCTGCTTGGCGTGCTTCAAGAGAGCGAGCCTACCTTTGCAGCCAGT  
 CCCTTCTCAGACCCCTTCCAGCTGGATAACCCGGACCCCCAGCCCATCGTGGATGGCGAGGAGGGCTTA  
 TCTGGGTGATCGGGCCTGTGCTGGCCGTGGTCTTCATAATCTGCATTGTGCTATCTGCTCTACAA  
 GAACAAACCCGACAGTAAACGCAAGGACTCAGAACCCCGACCAAAATGCCTCCTGAACAATGCCGACCTC  
 GCCCCTACCACCCCAAGGACCTGTGGAATGAGACGCATTAACCTCCAGACTCCAGATTCAGGCCTCA  
 GGAGCCCCCTCAGGGAGCCGGGTTTCACTTTGAAAGCATGCTTAGCCACCCGCCAATTCCTATCGCAGA  
 CATGGCGGAGCACACGGAGCGGCTCAAGGCCAACGACAGCCTCAAGCTCTCCAGGAGTATGAGTCCATC  
 GACCTGGACAGCAGTTACATGGGAACATTCACCTGGAAGTGAACAAGCCGAAGAACCCTATGCCA  
 ACGTCATCGCCTATGACCACTCCCGTGTATCCTCCAGCCATTGAAGGCATCATGGGCAGTGATTACAT  
 CAATGCCAACTACGTGGACGGCTACCGGTGTGAGAACGCGTACATTGCCACGAGGGGCCGCTGCCTGAG  
 ACCTTTGGGACTTCTGGCGTATGGTGTGGGAGCAGCGGTGCGCGACCATCGTCATGATGACGCGGTGG  
 AGGAGAAGTCACGGATCAAGTGTGATCAGTATTGGCCAAACAGAGGCACGGAGACCTACGGCTTCATCCA  
 GGTACGTTGCTAGATACCATCGAGCTGGCCACATTCTGCGTCAGGACATTCTCTGACACAAGAATGGC  
 TCCAGTGAGAAACGCGAGGTCCGCCAGTCCAGTTTACGGCGTGGCCGGACCATGGCGTGCCGAATACC  
 CAACGCCCTTCTGGCTTCTCTGCGGAGAGTCAAGACCTGCAACCCGCCAGATGCCGGCCCCATCGTGGT  
 TCACTGACGTGCGGTGTGGGCCGACAGGCTGCTTTATCGTCATCGACGCCATGCTTGAGCGGATCAAG  
 CCAGAGAAGACAGTCGATGTCTATGGCCACGTGACGCTCATGAGGTCCCAGCGCAACTACATGGTGCAGA  
 CGGAGGACCAGTACAGCTTCATCCACGAGGCCCTGCTGGAGGCCGTGGGCTGTGGCAACACAGAAGTGCC  
 CGCACGCAGCCTATGCTACATCCAGAAGCTGGCCAGGTGGAGCCTGGCGAACACGTCACTGGCATG  
 GAACTCGAGTTCAAGCGGCTGGCTAACTCCAAGGCCACACGTACGCTTCATCAGTGCCAACTGCCTT

GTAAACAAGTTCAAGAACCGCCTGGTGAACATCATGCCCTATGAGAGCACACGGGTCTGTCTGCAACCCAT  
CCGGGGTGTGGAGGGCTCTGACTACATCAACGCCAGCTTCATTGATGGCTACAGGCAGCAGAAGGCCTAC  
ATCGCGACACAGGGGCCGCTGGCGGAGACCACGGAAGACTTCTGGCGCATGCTGTGGGAGAACAAATTCGA  
CGATCGTGGTGATGCTGACCAAGCTGCGGGAGATGGGCCGGGAGAAGTGTACCAGTACTGGCCGGCCGA  
GCGCTCTGCCGCTACCAGTACTTTGTGGTAGATCCGATGGCAGAATAACAATGCCTCAGTATATCCTG  
CGAGAGTTCAAGGTACAGATGCCCGGGATGGCCAGTCCCGGACTGTCCGGCAGTTCAGTTCACAGACT  
GGCCGGAACAGGGTGTGCCAAAGTCGGGGGAGGGCTTCATCGACTTCATTGGCCAAGTGCATAAGACTAA  
GGAGCAGTTTGGCCAGGACGGCCCCATCTCTGTCCACTGCAGTGC CGGCGTGGGCAGGACGGGCGTCTTC  
ATCACGCTTAGCATCGTCTGGAGCGGATGCGGTATGAAGGCGTGGTGGACATCTTTCAGACGGTGAAGA  
TGCTACGAACCCAGCGCCGCCCATGGTGCAGACAGAGGATGAGTACCAGTTCTGTTACCAGCGGCACT  
GGAGTACCTCGGAAGCTTTGACCACTATGCAACC

AGCGGACCGACGCGTACGCGGCCGCTCGAG – GFP Tag – GTTTAA

# Protein Sequence:

>RG221440 representing NM\_002850

Red=Cloning site Green=Tags(s)

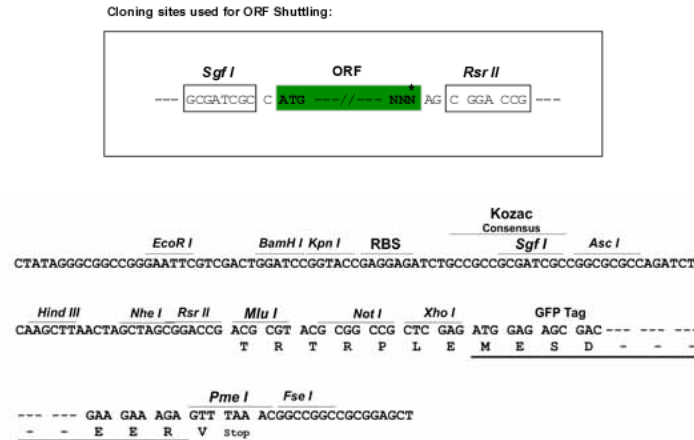
MAPTWGPMVSVVGPMLLVLLVGGCAAEPPRFIKEPKDQIGVSGGVASFVCQATGDPKPRVTWNKKG  
KKVNSQRFETIEFDESAGAVLRIQPLRTPRDENVYECVAQNSVGEITVHAKLTVLREDQLPSGFPNIDMG  
PQLKVVTRTATMLCAASGNPDPEITWFKDFLPVDPASNGRIKQLRSETFESTPIRGALQIESSEED  
QKGYECVATNSAGVRYSSPANLYVRELREVRVAPRFILPMSHEIMPGGNVNITCVAVGSPMPYVQWQM  
GAEDLTPEDDMPVGRNVLELTDVKDSANYTCVAMSSLVIEAVAQITVKSLPKAPGTPMVTENTATSITI  
TWDSGNPDVPSYVYIEYKSKSQDGPYQIKEDITTRYISIGGLSPNSEYEWVSAVNSIGQPPSESVVTR  
TGEQAPASAPRNVQARMLSATMIVQWEEPVEPNGLIRGYRVYVMEPEHPVGNWQKHNVDDSLTTVGS  
LLEDETYTVRVLAFSTVGDGPLSDPIQVKTQQGVPGQPMNLRAEARSETSITLSWSPPRQESIKEYELLF  
REGDHGREVGRTFDPTTSYVVEDLKPNTHEYAFRLAARSPQGLGAFTPVVRQRTLQSKPSAPPQDVKCVSV  
RSTAILVSWRPPPPETHNGALVGYSVRYRPLGSEDPEPKEVNGIPPTTTQILLEALEKWTQYRITVAHT  
EVGPGPESSPVVVRTDEDVPSAPPRKVEAEALNATAIRVLWRSPAPGRQHGGIRGYQVHYVMEGAEARG  
PPRIKDVMLADAQWETDDTAEYEMVITNLQPETAYSITVAAYTMKGDGARSKPKVVVTKGAVLGRPTLSV  
QQTPEGSLARWEPPAGTAEDQVLGYRLQFGREDSTPLATLEFPSEDRTYASGVHKGATYVFRLAARSR  
QGLGEEAAEVLSPEDTPRGHPQILEAAGNASAGTVLLRWLPPVPAERNGAIVKYTVAVREAGALGPARE  
TELPAAAEPGAENALTLQGLKPDATYDLQVRAHTRRGPGFSPVRYRTFLRDQVSPKNFKVKMIMKTSV  
LLSWEFPDYNSTPYKIQYNGLTLDVDGRTTKKLITHLKPHTFYNFVLNTRGSSLGGLQQTVAWTAFAFN  
LLNGKPSVAPKPDADGFMVYLPDQSPVPVQSYFIVMVPLRKSRRGGQFLTPLGSPEDMDLEELIQDISR  
LQRRSLRHSRQLEVPYPRPIAARFSVLPTTFHPGDQKQYGGFDNRGLEPGHRYVLFVLAFLQKSEPTFAAS  
PFSDPFQLDNDPQPIVDGEEGLIWWIGPVLAVFIIICIVIAILLYKNKPDSCRKRDSEPRTKCLLNADL  
APHHKDPVEMRRINFQTPDSGLRSPLREPGHFESMLSHPPPIADMAEHTERLKAANDSLKLSQYYESI  
DPGQQFTWEHSNLEVNKPKNRYANVIAYDHSRVLQPIEGIMGSDYINANYVDGYRCQYATQGPLPE  
TFGDFWRMVWEQRSATIVMMTRLEEKSRICKDQYWPNGTETYGFIQVTLTDLTIELATFCVRTFSLHKNG  
SSEKREVRQFQFTAWPDHGVPEYPTPFLAFLRRVKTCPNPDAGPIVVHCSAGVGRGTGCFIVIDAMLERIK  
PEKTVDDYGHVTLMRSQRYNMVQTEDQYSFIEHALLAEGCGNTEVPARSLYAYIQKLAQVEPGEHVTGM  
ELEFKRLANSKAHTSRFISANLPCNKFKNRLVNIMPYESTRVCLQPIRGVEGSDYINASFIDGYRQQKAY  
IATQGPLAETTEDFWRMLWENNSTIVMLTKLREMGREKCHQYWPASARYQYFVVDPMAYNMPQYIL  
REFKVTDARDGQSRTVRQFQFTDWPEQGVPKSGEGFIDF IGQVHKTKQFGQDGPISVHCSAGVGRGTGVF  
ITLSIVLERMRYEGVVDIFQTVKMLRTQRPAMVQTEDEYQFCYQAALLEYLGSFDHYAT

SGPTRRRLE – GFP Tag – V

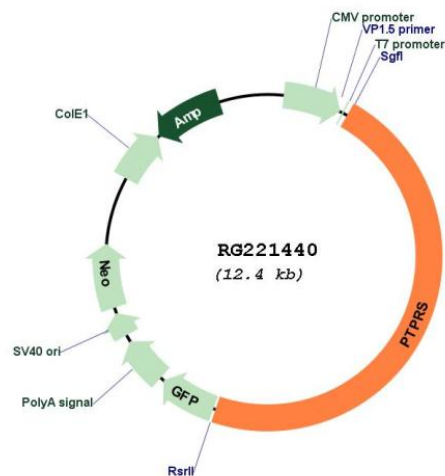
# Restriction Sites:

SgfI-RsrII

## Cloning Scheme:



## Plasmid Map:



ACCN:

NM\_002850

ORF Size:

5844 bp

OTI Disclaimer:

The molecular sequence of this clone aligns with the gene accession number as a point of reference only. However, individual transcript sequences of the same gene can differ through naturally occurring variations (e.g. polymorphisms), each with its own valid existence. This clone is substantially in agreement with the reference, but a complete review of all prevailing variants is recommended prior to use. [More info](#)

<b>OTI Annotation:</b>	This clone was engineered to express the complete ORF with an expression tag. Expression varies depending on the nature of the gene.
<b>Components:</b>	The ORF clone is ion-exchange column purified and shipped in a 2D barcoded Matrix tube containing 10ug of transfection-ready, dried plasmid DNA (reconstitute with 100 ul of water).
<b>Reconstitution Method:</b>	<ol style="list-style-type: none"> <li>1. Centrifuge at 5,000xg for 5min.</li> <li>2. Carefully open the tube and add 100ul of sterile water to dissolve the DNA.</li> <li>3. Close the tube and incubate for 10 minutes at room temperature.</li> <li>4. Briefly vortex the tube and then do a quick spin (less than 5000xg) to concentrate the liquid at the bottom.</li> <li>5. Store the suspended plasmid at -20°C. The DNA is stable for at least one year from date of shipping when stored at -20°C.</li> </ol>
<b>RefSeq:</b>	<u>NM_002850.4</u>
<b>RefSeq Size:</b>	7347 bp
<b>RefSeq ORF:</b>	5847 bp
<b>Locus ID:</b>	5802
<b>UniProt ID:</b>	<u>Q13332</u>
<b>Cytogenetics:</b>	19p13.3
<b>Protein Families:</b>	Druggable Genome, Phosphatase, Transmembrane
<b>Gene Summary:</b>	<p>The protein encoded by this gene is a member of the protein tyrosine phosphatase (PTP) family. PTPs are known to be signaling molecules that regulate a variety of cellular processes including cell growth, differentiation, mitotic cycle, and oncogenic transformation. This PTP contains an extracellular region, a single transmembrane segment and two tandem intracytoplasmic catalytic domains, and thus represents a receptor-type PTP. The extracellular region of this protein is composed of multiple Ig-like and fibronectin type III-like domains. Studies of the similar gene in mice suggested that this PTP may be involved in cell-cell interaction, primary axonogenesis, and axon guidance during embryogenesis. This PTP has been also implicated in the molecular control of adult nerve repair. Four alternatively spliced transcript variants, which encode distinct proteins, have been reported. [provided by RefSeq, Jul 2008]</p>