

Product datasheet for **RG221439**

DCDC2B (NM_001099434) Human Tagged ORF Clone

Product data:

Product Type:	Expression Plasmids
Product Name:	DCDC2B (NM_001099434) Human Tagged ORF Clone
Tag:	TurboGFP
Symbol:	DCDC2B
Mammalian Cell Selection:	Neomycin
Vector:	pCMV6-AC-GFP (PS100010)
E. coli Selection:	Ampicillin (100 ug/mL)
ORF Nucleotide Sequence:	>RG221439 representing NM_001099434 Red=Cloning site Blue=ORF Green=Tags(s)

TTTTGTAATACGACTCACTATAGGGCGGCCGGGAATTCGTCGACTGGATCCGGTACCGAGGAGATCTGCC
GCC**CGATCGCC**

ATGGCAGGTGGCAGTCCAGCAGCCAAGAGGGTAGTGGTGTACCGGAATGGGGACCCATTCTCCAGGCT
CCCAGCTGGTGGTGACTCAACGCCGCTTCCCCACCATGGAGGCCCTTCTCTGCGAGGTGACATCAGCTGT
GCAGGCCCCACTGGCTGTGCGTGCCCTCTACACACCTTGCATGGCCACCCTGTCACCAACCTGGCAGAC
TTGAAGAACAGAGGGCAGTATGTGGCCGCTGGATTTGAACGATTCACAAGCTCCACTATTTACCCATA
GAGGGAAGGACCCAGGTGGGAAGAGCTGCAGACTACAAGGTCTCCCGTACTCGCCACTTGTGTGATGG
GGCCATTGGACGGCAGCTGCCTGCAGGTGCTCCCAGCTATATCCATGTGTTTCAGGAATGGGGACCTGGTA
AGTCCCCATTTAGTCTGAAGCTGTCCCAGGCTGCCAGCCAGGACTGGGAACTGTGTTGAAGCTCCTGA
CTGAGAAGGTCAAGTTGCAGAGTGGGGCTGTGTGCAAACCTGCAACCCTAGAGGGGCTCCCAGTGTGAGC
AGGGAAGGAGCTGGTAACTGGCCATTACTATGTGGCTGTCGGAGAGGATGAGTTCAAGGACCTTCCCTAT
CTGGAGCTGTGGTGGCCAGCCCTCCCTGCCAGGGGCTGTGGCAACCTCCAGGCTCGAAGTCTAGGC
CCCACAGGCAGGGGGCCCAAGGCCACAGGGCCAGGTAACCCAGCCCTCTCAAAGGAACCAGACCGGAAT
TAAGCCATCTGCTTTCTATGCCAGACCCAGCAGACCATTAGCCAAGAAGCAAGCTCCCCACACTCTCA
TTCCCATCAGGAGTTATAGGAGTATATGGAGCTCCCCACCGAAGGAAGGACAGCGGGGGCCCTGGAAG
TAGCAGATGATGAAGACTCAGACAGAGGAGCCCTTGGATCAGAGGGCAGCACAGATAGTGAAGAGGC
CTTGTCCTGGAAAACCGCCTGGGGCTGGGGCTGCTATCTCAGCCTCAGCCCCAGCTCTGCCATCT

ACGCGTACGCGGCCGCTCGAG - GFP Tag - GTTTAA



[View online »](#)

Protein Sequence: >RG221439 representing NM_001099434
Red=Cloning site Green=Tags(s)

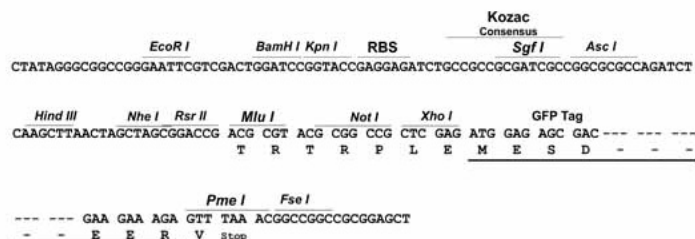
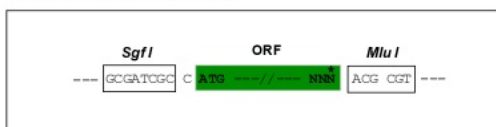
```
MAGGSPA AKRVVYRNGDPFFPGSQLVVTQRRFPTMEAFLECVTSAVQAPLAVRALYTPCHGHPVTNLAD
LKNRGQYVAAGFERFHLHYLPHRGKDPGGKSCRLOQPPVTRHLCDGAIGRQLPAGAPSYIHVFRNGDLV
SPPFSLKLSQAASQDWETVLKLLTEKVKLQSGAVCKLCTLEGLPLSAGKELVTGHYYVAVGEDEFKDLPL
LELLVPSPLPRGCWQPPGSKSRPHRQGAQGHRAQVTPSPKEPDRIKPSAFYARPQQTIQPRSKLPTLS
FPSGVIQVYVYGAPHRRKETAGALEVADDEDTQTEEPLDQRAAQIVEEALSLENQPGAGAAISASAPALPS
```

TRTRPLE - GFP Tag - V

Restriction Sites: SgfI-MluI

Cloning Scheme:

Cloning sites used for ORF Shuttling:



ACCN: NM_001099434

ORF Size: 1047 bp

OTI Disclaimer: The molecular sequence of this clone aligns with the gene accession number as a point of reference only. However, individual transcript sequences of the same gene can differ through naturally occurring variations (e.g. polymorphisms), each with its own valid existence. This clone is substantially in agreement with the reference, but a complete review of all prevailing variants is recommended prior to use. [More info](#)

OTI Annotation: This clone was engineered to express the complete ORF with an expression tag. Expression varies depending on the nature of the gene.

Components: The ORF clone is ion-exchange column purified and shipped in a 2D barcoded Matrix tube containing 10ug of transfection-ready, dried plasmid DNA (reconstitute with 100 ul of water).

Reconstitution Method:

1. Centrifuge at 5,000xg for 5min.
2. Carefully open the tube and add 100ul of sterile water to dissolve the DNA.
3. Close the tube and incubate for 10 minutes at room temperature.
4. Briefly vortex the tube and then do a quick spin (less than 5000xg) to concentrate the liquid at the bottom.
5. Store the suspended plasmid at -20°C. The DNA is stable for at least one year from date of shipping when stored at -20°C.

RefSeq: [NM_001099434.1](#), [NP_001092904.1](#)

RefSeq Size: 1367 bp

RefSeq ORF: 1050 bp

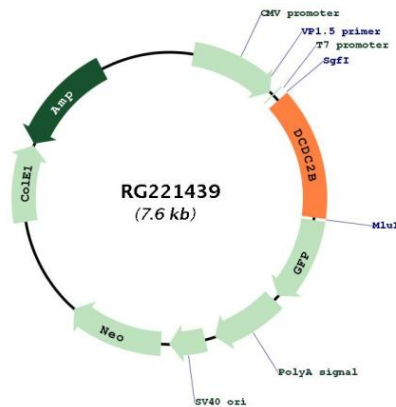
Locus ID: 149069

UniProt ID: [A2VCK2](#)

Cytogenetics: 1p35.2

Gene Summary: This gene encodes a member of the doublecortin family. The protein encoded by this gene contains two doublecortin domains. The doublecortin domain has been demonstrated to bind tubulin and enhance microtubule polymerization. [provided by RefSeq, Sep 2010]

Product images:



Circular map for RG221439