

## Product datasheet for **RG221434**

### **DYNC112 (NM\_001378) Human Tagged ORF Clone**

#### **Product data:**

Product Type:	Expression Plasmids
Product Name:	DYNC112 (NM_001378) Human Tagged ORF Clone
Tag:	TurboGFP
Symbol:	DYNC112
Synonyms:	DIC74; DNCI2; IC2; NEDMIBA
Mammalian Cell Selection:	Neomycin
Vector:	pCMV6-AC-GFP (PS100010)
E. coli Selection:	Ampicillin (100 ug/mL)



[View online »](#)

**ORF Nucleotide Sequence:**

>RG221434 representing NM\_001378  
 Red=Cloning site Blue=ORF Green=Tags(s)

TTTTGTAATACGACTCACTATAGGGCGGCCGGAATTCGTCGACTGGATCCGGTACCGAGGAGATCTGCC  
 GCC**CGCATCGCC**

ATGTCAGACAAAAGTGAATTAAGGCTGAGTTGGAACGTAGAAGCAGCGACTGGCCAAATCAGAGAGG  
 AAAAGAAGAGAAAAGAAGAAGAAAGGAAAAAAGAAAACAGACCAGAAGAAGGAAGCTGTTGCTCCTGT  
 GCAAGAAGAATCAGATCTTGAAAAAAGGAGAGAAGCTGAAGCATTGCTTCAAAGCATGGGGCTAACT  
 CCAGAATCCCCATTGTTTTCTGAATACTGGTCCCTCCTCCTATGTCTCCATCCTCCAAATCTGTGA  
 GCACTCCAAGTGAAGCTGGAAGCCAAGACTCTGGAGATGGCGCGTGGGATCTAGGACGCTGCATTGGGA  
 TACAGATCCATCAGTTCTCAGCTTCACTCAGATTCGATTTGGGACGAGGACCTATTAACCTGGAATG  
 GCTAAAATCACGCAAGTCGACTTCTCCTCGAGAAATGTCACGTATACAAAGGAACTCAGACTCCAG  
 TTATGGCTCAACCCAAAGAAGATGAAGAGGAAGATGATGATGTAGTGGCTCCTAAACCACCTATTGAACC  
 TGAAGAAGAGAAAACCTTAAAGAAGATGAGGAAAATGATAGTAAAGCTCCCCCTCATGAGCTGACTGAA  
 GAAGAAAAGCAACAAATCCTGCACTCTGAGGAATTTTTAAGTTTCTTTGACCATTCTACAAGAATTGTAG  
 AAAGAGCTCTTTCTGAGCAGATTAACATCTTTTACTATAGTGGGAGAGATTTGGAAGACAAAGAAGG  
 AGAGATTAAGCAGGTGCTAAACTGTCATTAATCGACAATTTTTGACGAACGTTGGTCAAAGCATCGG  
 GTGGTTAGTTGTTGGATTGGTCATCTCAGTATCCGGAGTTACTCGTGGCTTCTATAACAACAATGAAG  
 ATGCCCTCATGAGCCTGATGGTGTGGCCCTTGATGGAATATGAAATACAAAAAACTACCCAGAGTA  
 TGTGTTTCACTGCCAGTCAGCTGTGATGCTGCCACATTTGCAAAATTCATCCAATCTTGTGTTGGT  
 GGTACATATTCAGGCCAAATGTGCTTTGGGATAACCGTAGCAATAAAAGAACTCCAGTGCAAAAGAACTC  
 CACTGTCAGCAGCTGCACACACACACCCTGTATATTGTGTAATGTTGTTGGAACACAAAATGCTCACAA  
 TCTGATTAGCATCTACTGATGGAAAAATTTGTTTCATGGAGTCTGGACATGCTTTCCCATCCACAGGAT  
 AGCATGGAGTTGGTTCATAAACAGTCAAAAGCAGTAGCTGTGACATCTATGTCCTTCCCTGTTGGAGATG  
 TCAACAACCTTTGTTGGGAGTGAAGAAGTTCTGTGTACACAGCATGCCGCCATGGCAGCAAAGCTGG  
 AATCAGTGAGATGTTGAGGGGCATCAAGGACCAATCACTGGCATCCATTGTCATGCAGCTGTTGGAGCA  
 GTAGACTTCTCACATCTTTTGTCACTTTCATCGTTTACTGGACAGTAAAGCTTTGGACAATAAGAATA  
 ACAAGCCTTTGTATTCAATTTGAAGATAATGCAGACTATGTTTATGATGTTATGTGGTACCTACCCACC  
 AGCCCTGTTTGCCTGTGGATGGCATGGGAGATTGGATTTATGGAATCTCAATAATGACACAGAGGTA  
 CCAACTGCCAGCATTTCTGTGGAGGTAATCCTGCTTAAATCGTGTGAGATGGACCCATTCTGGCAGAG  
 AGATTGCTGTGGGTGATTCTGAAGGACAGATTGTTATATACGATGTGGGAGAGCAGATTGCTGTTCCCG  
 CAATGATGAATGGGCACGGTTTGCCGAACACTTCGAGAAATTAATGCAAACCGAGCTGATGCAGAGGAG  
 GAAGCAGTACCCGAATACCTGCT

**ACGCGT**ACGCGGCCGCTCGAG - GFP Tag - GTTTAA

**Protein Sequence:**

>RG221434 representing NM\_001378  
 Red=Cloning site Green=Tags(s)

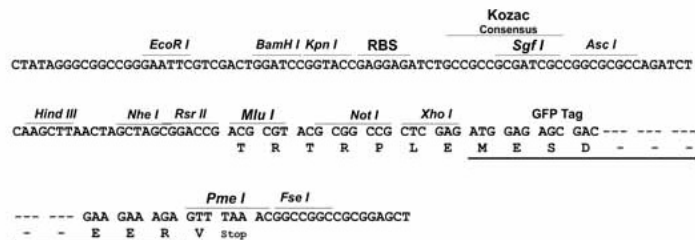
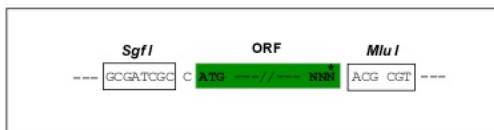
MSDKSELKAELEKQRLAQIREEKRRKEERKKKETDQKKEAVAPVQEEESDLEKKRREAEALLQSMGLT  
 PESPIVFSEYWPPPMSPSSKSVSTPSEAGSQDSGDGAVGSRTRLHWDTPSVLQLHSDSDLGRGPIKLG  
 AKITQVDFPPREIVTYTKETQTPVMAQPKEDDEEDDDVVPKPPIEPEEEKTLKKDEENDSKAPPHELTE  
 EEKQQILHSEEFLSFFDHSTRIVERALSEQINIFFDYSGRDLEKEGEIQAGAKLSLNRQFDERWSKHR  
 VVSCLDWSSQYPELLVASYNNDAPHEPDGVALVWMMKYKKTPEYVFHCQSAVMSATFAKHPNLVVG  
 GTYSGQIVLWDRNSNKRTPVQRTPLSAAAHTHPVYCVNVVGTQNAHNLISISTDGKICSWSLDMLSHPQD  
 SMELVHKQSKAVAVTSMSPVGDVNNFVVGSEEGSVYACRHSKAGISEMFEGHQGPITGIHCHAAVGA  
 VDFSHLFVTSSFDWTVKLWTTKNNKPLYSFEDNADYVYDVMWSPHPALFACVDGMGRLLDLWNLNNDTEV  
 PTASISVEGNPALNRVRWTHSGREIAVGDSEGVQIVYDVGQIAVPRNDEWARFGRTLAEINANRADEE  
 EAATRIPA

**TRTRPLE** - GFP Tag - V

Restriction Sites: SgfI-MluI

Cloning Scheme:

Cloning sites used for ORF Shutting:



ACCN: NM\_001378

ORF Size: 1914 bp

OTI Disclaimer: The molecular sequence of this clone aligns with the gene accession number as a point of reference only. However, individual transcript sequences of the same gene can differ through naturally occurring variations (e.g. polymorphisms), each with its own valid existence. This clone is substantially in agreement with the reference, but a complete review of all prevailing variants is recommended prior to use. [More info](#)

OTI Annotation: This clone was engineered to express the complete ORF with an expression tag. Expression varies depending on the nature of the gene.

Components: The ORF clone is ion-exchange column purified and shipped in a 2D barcoded Matrix tube containing 10ug of transfection-ready, dried plasmid DNA (reconstitute with 100 ul of water).

Reconstitution Method:

1. Centrifuge at 5,000xg for 5min.
2. Carefully open the tube and add 100ul of sterile water to dissolve the DNA.
3. Close the tube and incubate for 10 minutes at room temperature.
4. Briefly vortex the tube and then do a quick spin (less than 5000xg) to concentrate the liquid at the bottom.
5. Store the suspended plasmid at -20°C. The DNA is stable for at least one year from date of shipping when stored at -20°C.

RefSeq: [NM\\_001378.1](#), [NP\\_001369.1](#)

RefSeq Size: 2602 bp

RefSeq ORF: 1917 bp

Locus ID: 1781

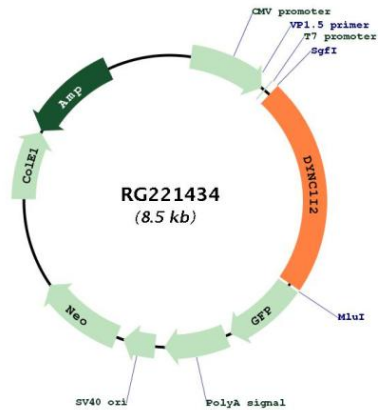
UniProt ID: [Q13409](#)

**Cytogenetics:** 2q31.1

**Domains:** WD40

**Gene Summary:** This gene encodes a member of the dynein intermediate chain family. The encoded protein is a non-catalytic component of the cytoplasmic dynein 1 complex, which acts as a retrograde microtubule motor to transport organelles and vesicles. A pseudogene of this gene is located on chromosome 10. Alternative splicing results in multiple transcript variants. [provided by RefSeq, Nov 2012]

**Product images:**



Circular map for RG221434