

Product datasheet for **RG221423**

CHRNE (NM_000080) Human Tagged ORF Clone

Product data:

Product Type:	Expression Plasmids
Product Name:	CHRNE (NM_000080) Human Tagged ORF Clone
Tag:	TurboGFP
Symbol:	CHRNE
Synonyms:	ACHRE; CMS1D; CMS1E; CMS2A; CMS4A; CMS4B; CMS4C; FCCMS; SCCMS
Mammalian Cell Selection:	Neomycin
Vector:	pCMV6-AC-GFP (PS100010)
E. coli Selection:	Ampicillin (100 ug/mL)



[View online »](#)

ORF Nucleotide Sequence:

>RG221423 representing NM_000080
 Red=Cloning site Blue=ORF Green=Tags(s)

TTTTGTAATACGACTCACTATAGGGCGGCCGGAATTCGTCGACTGGATCCGGTACCGAGGAGATCTGCC
 GCC**CGGATCGCC**

ATGGCAAGGGCTCCGCTTGGGGTCTGCTCCTCTTGGGGTCTCGGCAGGGGTGTGGGAAGAACGAGG
 AACTGCGTCTTTATCACCATCTCTTCAACAATATGACCCAGGAAGCCGGCCAGTCCGGGAGCCTGAGGA
 TACTGTACCATCAGCCTCAAGGTCACCCTGACGAATCTCATCTCACTGAATGAAAAAGAGGAGACTCTC
 ACCACTAGCGTCTGGATTGGAATCGATTGGCAGGATTACCGACTCAACTACAGCAAGGACGACTTTGGGG
 GTATAGAAACCTGCGAGTCCCTCAGAAGTCTGTGGCTGCCAGAGATTGTGCTGGAAAACAATATTGA
 TGGCCAGTTCGGAGTGGCTACGACGCCAACGTGCTCGTCTACGAGGGCGGCTCCGTGACGTGGCTGCC
 CCGGCCATCTACCGCAGCGTCTGCGCAGTGGAGGTCACCTACTCCCTTCGATTGGCAGAACTGTTCCG
 TTATTTCCGCTCTCAGACGTACAATGCCGAAGAGGTGGAGTTCACTTTTGCCGTAGACAACGACGGCAA
 GACCATCAACAAGATCGACATCGACACAGAGGCCATACTGAGAACGGCAGTGGCCATCGACTTCTGC
 CCGGGGTGATCCGCCGCCACCACGGTGGCGCCACCGACGGCCAGGGGAGACTGACGTATCTACTCGC
 TCATCATCCGCCGAAGCCGCTTCTACGTACATAACATCATCGTCCCTGTGTGCTCATCTCGGGCCT
 GGTGCTGCTCGCTACTTCTGCGCGCGCAGGCCGGCGGCCAGAAATGCACGGTCTCCATCAACGTCCTG
 CTCGCCAGACCGTCTTCTTGTCTCATTGCCAGAAAATCCCAGAGACTTCTCTGAGCGTGCCGCTCC
 TGGGCAGTTCCTATTTTCTCATGGTGGTCCGACGCTCATTGTATGAATTGCGTCATCGTGTCAA
 CGTGTCCAGCGGACGCCACCACCCACGCCATGTCCCGCGGCTGCGCCAGTTCTCTGGAGCTGCTG
 CCGCGCCTCTGGGCTCCCGCGCCGCCGAGGCCCGGGCCGCTCGCCCCAAGCGGGCGCTCGT
 CGTGGGCTTATTGCTCCGCGCGGAGGAGCTGATACTGAAAAAGCCACGGAGCAGCTCGTGTGGGG
 GCAGAGGCACCGCAGGGGACCTGGACGGCTGCCTTCTGCCAGAGCCTGGGCGCCGCCCGGAGGTC
 CGTGTGCTGTGGATGCCGTGAACCTCGTGGCCGAGAGCACGAGAGATCAGGAGGCCACCGCGAGGAAG
 TGTCCGACTGGGTGCGCATGGGAATGCCCTTGACAACATCTGCTTCTGGGCCGCTCTGGTGTCTTCAG
 CGTGGGCTCCAGCCTCATCTTCTCGGGCCTACTTCAACCGAGTGCCTGATCTCCCTACGCGCCGTG
 ATCCAGCCT

ACGCGTACGCGGCCGCTCGAG – GFP Tag – GTTTAA

Protein Sequence:

>RG221423 representing NM_000080
 Red=Cloning site Green=Tags(s)

MARAPLGVLLLLLGLLGRGVGKNEELRLYHHLFNNYDPSRPVREPEDVTISLKVLTNLIISLNEKEETL
 TTSVWIGIDWQDYRLNYSKDDFGGIETLRVPSSELVWLPEIVLENNIDGQFVAYDANLVYEGGSVTWLP
 PAIYRSVCAVEVYFPFDWQNCSLIFRSQTYNAEEVEFTFAVDNDGKTINKIDIDTEAYTENGAWAIDFC
 PGVIRRHGGATDGPGETDVIYSLIIRRKPLFYVINIIVPCVLISGLVLLAYFLPAQAGGQKCTVSINVL
 LAQTVFLFLIAQKIPETSLSVPLLGRFLIFVMVATLIVMNCVIVLNVSRPTTHAMSPRLRHVLELL
 PRLGSPPEAPRAASPPRRASSVGLLRAEELILKKPRSELVFEGQRHRQGTWAAFCQSLGAAPEV
 RCCVDVNFVAESTRDQEAATGEEVSDWVRMGNALDNICFWAALVLFVSGSSLIFLGAYFNRVDPDLPYAPC
 IQP

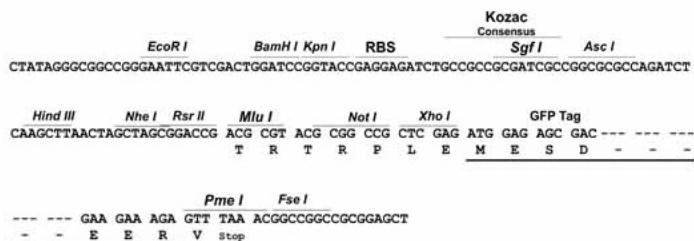
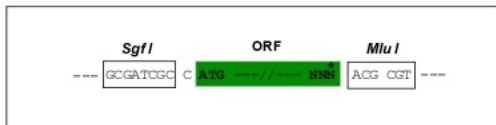
TRTRPLE – GFP Tag – V

Restriction Sites:

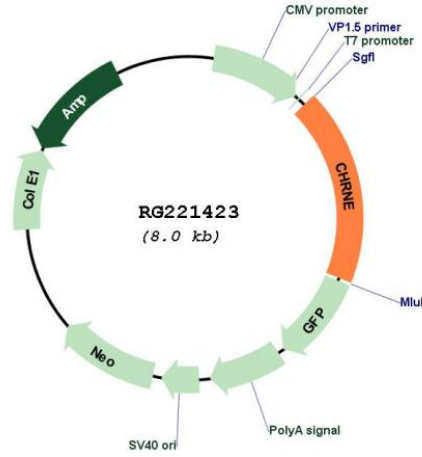
Sgfl-Mlul

Cloning Scheme:

Cloning sites used for ORF Shutting:



Plasmid Map:



ACCN: NM_000080

ORF Size: 1479 bp

OTI Disclaimer:	<p>Due to the inherent nature of this plasmid, standard methods to replicate additional amounts of DNA in E. coli are highly likely to result in mutations and/or rearrangements. Therefore, OriGene does not guarantee the capability to replicate this plasmid DNA. Additional amounts of DNA can be purchased from OriGene with batch-specific, full-sequence verification at a reduced cost. Please contact our customer care team at custsupport@origene.com or by calling 301.340.3188 option 3 for pricing and delivery.</p> <p>The molecular sequence of this clone aligns with the gene accession number as a point of reference only. However, individual transcript sequences of the same gene can differ through naturally occurring variations (e.g. polymorphisms), each with its own valid existence. This clone is substantially in agreement with the reference, but a complete review of all prevailing variants is recommended prior to use. More info</p>
OTI Annotation:	<p>This clone was engineered to express the complete ORF with an expression tag. Expression varies depending on the nature of the gene.</p>
Components:	<p>The ORF clone is ion-exchange column purified and shipped in a 2D barcoded Matrix tube containing 10ug of transfection-ready, dried plasmid DNA (reconstitute with 100 ul of water).</p>
Reconstitution Method:	<ol style="list-style-type: none">1. Centrifuge at 5,000xg for 5min.2. Carefully open the tube and add 100ul of sterile water to dissolve the DNA.3. Close the tube and incubate for 10 minutes at room temperature.4. Briefly vortex the tube and then do a quick spin (less than 5000xg) to concentrate the liquid at the bottom.5. Store the suspended plasmid at -20°C. The DNA is stable for at least one year from date of shipping when stored at -20°C.
RefSeq:	NM_000080.4
RefSeq Size:	2463 bp
RefSeq ORF:	1482 bp
Locus ID:	1145
UniProt ID:	Q04844
Cytogenetics:	17p13.2
Protein Families:	Druggable Genome, Ion Channels: Cys-loop Receptors, Transmembrane
Gene Summary:	<p>Acetylcholine receptors at mature mammalian neuromuscular junctions are pentameric protein complexes composed of four subunits in the ratio of two alpha subunits to one beta, one epsilon, and one delta subunit. The acetylcholine receptor changes subunit composition shortly after birth when the epsilon subunit replaces the gamma subunit seen in embryonic receptors. Mutations in the epsilon subunit are associated with congenital myasthenic syndrome. [provided by RefSeq, Sep 2009]</p>