

Product datasheet for **RG221413**

FACL4 (ACSL4) (NM_022977) Human Tagged ORF Clone

Product data:

Product Type:	Expression Plasmids
Product Name:	FACL4 (ACSL4) (NM_022977) Human Tagged ORF Clone
Tag:	TurboGFP
Symbol:	FACL4
Synonyms:	ACS4; FACL4; LACS4; MRX63; MRX68
Mammalian Cell Selection:	Neomycin
Vector:	pCMV6-AC-GFP (PS100010)
E. coli Selection:	Ampicillin (100 ug/mL)



[View online »](#)

ORF Nucleotide Sequence:

>RG221413 representing NM_022977
 Red=Cloning site Blue=ORF Green=Tags(s)

TTTTGTAATACGACTCACTATAGGGCGGCCGGAATTCGTCGACTGGATCCGGTACCGAGGAGATCTGCC
 GCC**CGGATCGCC**

ATGAAACTTAAGCTAAATGTGCTCACCATTATTTTGTGCTGTCCACTTGTTAATAACAATATACAGTGCCTTATATTTTCCATGGTATTTTCTTACCAATGCCAAGAAGAAAAACGCTATGGCAAAGAGAATAAAAGCTAAGCCCACTTCAGACAAACCTGGAAGTCCATATCGCTCTGTACACACTTCGACTCACTAGCTGTAATAGACATCCCTGGAGCAGATACTCTGGATAAATTATTTGACCATGCTGTATCCAAGTTTGGGAAGAAGACACGCTTGGGACCAGGAAATCCTAAGTGAAGAAAATGAAATGCAGCCAAATGGAAAAGTTTTTAAGAAATTAATTCTTGGGAATTATAAATGGATGAACTATCTTGAAGTGAATCGCAGAGTGAATAACTTTGGTAGTGGACTCACTGCTGGACTAAAACCAAGAACACCATTGCCATCTTCTGTGAGACCAGGCGCAATGGATGGATGCAGCACAGACCTGCTTTAAGTACAACCTTCTCTGTGACTTTATATGCCACACTTGGCAAAGAGCAGTAGTTCATGGGCTAAATGAATCTGAGGCTTCTATCTGATTACCAGTGTGAACTTCTGGAAAGTAACTTAAGACTGCATTGTTAGATATCAGTTGTGTTAAACATATCATTTATGTGGACAATAAGGCTATCAATAAAGCAGAGTACCCTGAAGGATTTGAGATTCACAGCATGCAATCAGTAGAAGAGTTGGGATCTAACCCAGAAAACCTGGGCATTCTCCAAGTAGACCAACGCCTTCAGACATGGCCATTGTTATGTATACTAGTGGTCTACTGGCCGACCTAAGGGAGTGATGATGCATCATAGCAATTTGATAGCTGGAATGACAGGCCAGTGTGAAAGAATACCTGGACTGGGACCGAAGGACACATATATTGGCTACTTGCCTTTGGCTCATGTGCTAGAACTGACAGCAGAGATATCTTGCTTTACCTATGGCTGCAGGATTGGATATTCTTCTCCGCTTACACTCTCTGACAGTCCAGCAAAATTAAGAAAGGAAGCAAGGAGACTGTACTGTACTGAAGCCCACACTTATGGCTGCTGTCCGGAAATCATGGATAGAATTTATAAGAATGTTATGAGCAAAGTCCAAGAGATGAATTATATTCAGAAACTCTGTTCAAGATAGGGTATGATTACAAATTGGAACAGATCAAAAAGGGATATGATGCACCTCTTGC AATCTGTTACTGTTAAAAAGGTCAAGGCCCTGCTGGGAGGGAATGTCCGCATGATGCTGTCTGGAGGGGCCCGCTATCTCCTCAGACACACCGATTGATGAATGTCTGCTTCTGCTGCCCAATTGGCCAGGGTTATGACTGACAGAATCATGTGGTGTGGGACAGTACTGAAGTAACTGACTATACTACTGGCAGAGTTGGAGCACCTTTTGTGCTGTAATTAAGCTAAAAGACTGGCAAGAAGGCGTTATACAATTAATGACAAGCCAAACCCAGAGGTGAAATCGTAATTTGGTGGACAGAACATCTCCATGGGATATTTAAAAATGAAGAGAAAACAGCAGAAGATTATCTGTGGATGAAAATGGACAAAAGTGGTTTTTGCAGTGGTATTTGGAGAATCCATCCCAGTGGATGTTTACAGATTATAGATCGTAAGAAAGATCTAGTGAAGTTACAAGCAGGAGAGTATGTATCTTTGGGAAAGTAGAAGCTGCACTGAAGAATTGTCCACTTATTGACAACATCTGTGCTTTTGC AAAAGTGATCAGTCTATGTGATCAGTTTTGTGTTTCTAACCAGAAAAGTTGACACTTTTGGCACAACAGAAA GGGGTAGAAGGAACTTGGGTTGATATCTGCAATAATCCTGCTATGGAAGCTGAAATACTGAAAGAAATTCGAGAAGCTGCAATGCCATGAAATTTGGAGCGATTTGAAATCCAATCAAGGTTTCGATTAAGCCCAGAGCCATGGACCCTGAAACTGGTTTGGTAACTGATGCTTTCAAACCTGAAAAGGAAGGAGCTGAGGAACCATTACCTCAAAGACATTGAACGAATGTATGGGGGCAAA

ACGCGTACGCGGCCGCTCGAG - GFP Tag - GTTTAA

Protein Sequence: >RG221413 representing NM_022977
 Red=Cloning site Green=Tags(s)

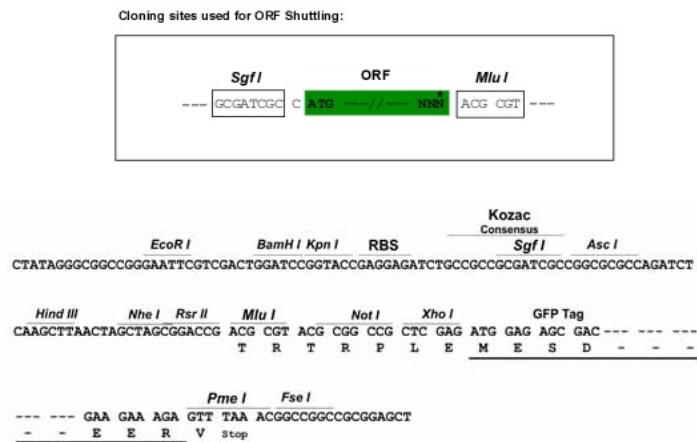
```

MKLKLNVLTIILLPVHLLITIYSALIFIPWYFLTNAKKKNAMAKRIKAKPTSDKPGSPYRSVTHFDSLAV
IDIPGADTLDKLFDHAVSKFGKKDSLGTREILSEENEMQPNGKVFKKLILGNYKWMNYLEVNRVNNFGS
GLTALGLKPKNTIAIFCETRAEWMIAAQTCFKYNFPLVTLATLGKEAVVHGLNESEASYLITSVELLES
KLKLTALLDISCVKHIIYVDNKAINKAEYPEGFEIHSMQSVEELGSPENLGIPPSRPTSDMAIVMYTSG
STGRPKGVMHHSNLIAGMTQCERIPGLGPKDITYIGYLPLAHVLELTAEISCFYGCRIGYSSPLTSD
QSSKIKKGSKGDCTVLKPTLMAAVPEIMDRIYKNVMSKVQEMNYIQKTLFKIGDYKLEQIKKGYDAPLC
NLLLFFKKVKALLGGNVRMMLSGGAPLSPQTHRFMNVCFCCPIGQGYGLTESCGAGTVTEVTDYTTGRVGA
PLICCEIKLKDWEQGGYINDKPNPRGEIVIGGQNI SMGYFKNEEKTAEDYSVDENGQRWFCTGDIGEFH
PDGCLQIIDRKKDLVKLQAGEYVSLGKVEAALKNCPLIDNICAFKSDQSYVVISFVVPNQKRLTLAQQK
GVEGTWVDICNNPAMEAEILKEIREAANAMKLERFEIPIKVRLSPEPWPETGLVDAFKLKRKELRNHY
LKDIERMYGGK
  
```

TRTRPLE - GFP Tag - V

Restriction Sites: SgfI-MluI

Cloning Scheme:



ACCN: NM_022977

ORF Size: 2133 bp

OTI Disclaimer: The molecular sequence of this clone aligns with the gene accession number as a point of reference only. However, individual transcript sequences of the same gene can differ through naturally occurring variations (e.g. polymorphisms), each with its own valid existence. This clone is substantially in agreement with the reference, but a complete review of all prevailing variants is recommended prior to use. [More info](#)

OTI Annotation: This clone was engineered to express the complete ORF with an expression tag. Expression varies depending on the nature of the gene.

Components: The ORF clone is ion-exchange column purified and shipped in a 2D barcoded Matrix tube containing 10ug of transfection-ready, dried plasmid DNA (reconstitute with 100 ul of water).

Reconstitution Method:

1. Centrifuge at 5,000xg for 5min.
2. Carefully open the tube and add 100ul of sterile water to dissolve the DNA.
3. Close the tube and incubate for 10 minutes at room temperature.
4. Briefly vortex the tube and then do a quick spin (less than 5000xg) to concentrate the liquid at the bottom.
5. Store the suspended plasmid at -20°C. The DNA is stable for at least one year from date of shipping when stored at -20°C.

RefSeq: [NM_022977.2](#)

RefSeq Size: 5356 bp

RefSeq ORF: 2136 bp

Locus ID: 2182

UniProt ID: [O60488](#)

Cytogenetics: Xq23

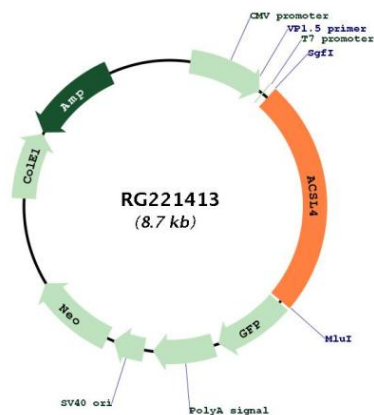
Domains: AMP-binding

Protein Families: Druggable Genome, Transmembrane

Protein Pathways: Adipocytokine signaling pathway, Fatty acid metabolism, Metabolic pathways, PPAR signaling pathway

Gene Summary: The protein encoded by this gene is an isozyme of the long-chain fatty-acid-coenzyme A ligase family. Although differing in substrate specificity, subcellular localization, and tissue distribution, all isozymes of this family convert free long-chain fatty acids into fatty acyl-CoA esters, and thereby play a key role in lipid biosynthesis and fatty acid degradation. This isozyme preferentially utilizes arachidonate as substrate. The absence of this enzyme may contribute to the cognitive disability or Alport syndrome. Alternative splicing of this gene generates multiple transcript variants. [provided by RefSeq, Jan 2016]

Product images:



Circular map for RG221413