

## Product datasheet for **RG221377**

### MIB1 (NM\_020774) Human Tagged ORF Clone

#### Product data:

Product Type:	Expression Plasmids
Product Name:	MIB1 (NM_020774) Human Tagged ORF Clone
Tag:	TurboGFP
Symbol:	MIB1
Synonyms:	DIP-1; DIP1; LVNC7; MIB; ZZANK2; ZZZ6
Mammalian Cell Selection:	Neomycin
Vector:	pCMV6-AC-GFP (PS100010)
E. coli Selection:	Ampicillin (100 ug/mL)
ORF Nucleotide Sequence:	>RG221377 representing NM_020774 Red=Cloning site Blue=ORF Green=Tags(s)

TTTTGTAATACGACTCACTATAGGGCGGCCGGAATTCGTCGACTGGATCCGGTACCGAGGAGATCTGCC  
GCC**CGATCGCC**

ATGAGTAAC**TC**CCCGAATAACCGGGT**GAT**GGTGGAAGGGTTGGCGCTCGGGT**AGT**GCGCGGCCCGGACT  
GGAAGTGGGGGAAGCAGGACGGCGGGCAGGGCCATGTGGGCACCGTCCGGAGCTTCGAGAGCCCCGAGGA  
GGTGGTGGT**AGT**GTGGACAACGGCACAGCTGCCAACTACCGCTGCTCCGGGGCTTACGACCTCCGCATC  
CTGGACAGCGCGCCACCGGCATCAAGCATGATGGAACCATGTGTGATACCTGCCCCAGCAACCAATCA  
TTGGCATT**CGAT**GGAAGTGTGCAGAGTGTACAAATTATGATTTGTGCACAGTGTGTTATCATGGAGATAA  
ACATCATT**TAAG**ACATCGCTTTTACCGAATTACTACCCGGGAAGT**GAG**AGGGTTCTGTTAGAGTCTCGT  
AGGAAATCTAAGAAGATTACAGCCAGAGGAATCTTTGCAGGTGCCAGAGTGGTGCAGGAGTGGACTGGC  
AGTGGGAAGATCAAGATGGAGGAAATGGACGTAGGGGAAAGGTAACAGAAATCCAGGACTGGAGTGCATC  
AAGCCCATAGCGCAGCATATGTCTCTGGGATAATGGTGCTAAGAACCTTTACAGAGTTGGCTTTGAG  
GGCATGTCTGATCTGAAATGTGTCCAGGATGCCAAGGGAGGTTCTTTCTACAGAGATCACTGCCCTGTGC  
TAGGTGAGCAGAAATGGCAACAGGAATCCTGGTGGATTGCAGATTGGT**GAC**CTGGTAAATATAGATCTCGA  
CCTCGAAATTGTACAGTCTTTGCAGCATGGT**CAT**GGAGGATGGACTGATGGAATGTTTGAGACTTTAACT  
ACA**ACT**GGAACTGTTTGGCATTGATGAAGATCATGACATTGTAGTACAGTATCCAAGTGGCAATAGGT  
GGACCTTCAATCCTGCTGTTCTCACTAAAGCGAACATTGTCCGAAGTGGAGATGCTGCTCAGGGTGCAGA  
AGGAGGCACCTCGCAGTTTCAAGTGGGTGATCTTGACAAGTTTGTATGACCTGGAACGAATTA**AACT**  
CTACAAGAGGACATGGAGAATGGGCTGAAGCGATGCTTCCA**ACT**TTAGGTAAAGTTGGCCGAGTACAAC  
AGATTTATTCAGACAGT**GAT**TTAAAGGTGGAAGTTTGTGGAACATCTTGACATACAATCCAGCAGCAGT  
TTCCAAGTGGCATCTGCAGGATCAGCCATTAGCAATGCATCTGGTGAAGACTCTCACA**ACT**CCTGAAG  
AAATTATTTGAAACCAAGAATCTGGT**GAC**CTCAATGAAGAATTAGTTAAGGCTGCTGCCAATGGAGATG  
TTGCTAAAGTGGAA**GAT**TTGCTTAAAGACCAGATGTGGATGTAATGGGCAATGTCTGGCCACACAGC  
TATGCAAGCTGCTAGTCAGAA**TGG**ACATGTTGACATTTTGAAGT**ACT**TTTGAAGCAAAACGTGGATGTC



View online »

GAAGCAGAGGATAAAGATGGTGATAGAGCAGTTCACCATGCAGCTTTTGGAGATGAAGGCCTGTTATAG  
 AAGTACTACATCGAGGTAGTGTGATTTGAATGCTCGAAACAAGCGCCGACAGACACCCTTCATATTGC  
 TGTCAATAAAGGTCATCTTCAAGTTGTGAAGACTTTATTGGACTTTGGCTGTCATCCCAGTCTCCAGGAT  
 TCTGAAGTGATACCCCTCTTATGATGCAATAAGTAAGAAACGTGATGATATCCTAGCAGTTCTTTTGG  
 AAGCTGGAGCAGATGTTACCATCACAACAATAATGGATTTAATGCTCTGCATCATGCTGCACTAAGGGG  
 AAATCCCAGTGAATGCGTGTCTTACTATCTAAATTACCAAGACCATGGATTGTGGATGAGAAGAAAGAT  
 GATGCTTATACTGCCTTACATCTGGCTGCCCTTAATAATCACGTAGAAGTGGCTGAAGTGTGGTACATC  
 AGGTAATGCAAACCTGGATATCCAGAATGTGAACCAACAACTGCCCTACACCTTGTGTTGAACGACA  
 GCATACCAGATTGTTAGGCTTTTGGTCCGTGCAGGTGCCAAGCTTGATATTAGGATAAGGATGGGGAT  
 ACTCCTTTGCATGAAGCTCTAAGGCATCACACTTTGTCTCAGCTACGTCAGCTCCAAGATATGCAAGATG  
 TGGGAAGGTGGATGCTGCCTGGGAGCCATCCAAAAACACGTTAATAATGGGACTTGGTACCAGGGGGC  
 AGAGAAGAAGAGTGCAGCATCTATTGCCTGTTTCTTGGCAGCCAATGGTGTGACCTGAGCATTGAAAT  
 AAGAAGGGTCAATCGCCACTTGATCTGTCTGCTGATCCGAATCTCTGCAAAGCACTGGCAAAGTGCATA  
 AGGAAAAAGTCAAGTGGTCAAGTGGTCTCGGAGTCTTCTATGATTAGTAATGATTCTGAAACCTTAGA  
 AGAGTGTATGGTGTGCTCAGATATGAAGAGAGATACTCTTTTGGTCCATGTGGACATATTGCTACCTGT  
 TCTTTATGTTCTCCACGTGTCAAGAAATGCCTCATCTGTAAGAAACAGGTTCAATCCAGGACAAAGATTG  
 AAGAATGTGGTATGCTCTGACAAGAAAGCAGCTGTTCTTTTCAACCTGTGGCCACATGTGTGCTTG  
 TGAACTGTGCTAACCTGATGAAAAAGTGTGTGCAAGTGTGAGCAGTAGTTGAACGAAGAGTGCCTTTC  
 ATTATGTGCTGTGGAGGGAAAAGTTCAGAAGATGCCACTGATGATATCTCAAGTGGGAATATTCCAGTAT  
 TACAAAAGGACAAGGATAATACCAATGTCAATGCAGATGTGCAAAGTTCAGCAACAGTTACAAGACAT  
 TAAAGAGCAGACAATGTGCCCTGTGTCTAGATCGTGAAGAATATGATTTTCTTTGTGGTCAACGGA  
 ACCTGTCAACTCTGTGGAGACCGCATGAGTGAATGTCTATCTGTGCAAGGCTATTGAACGAAGGATTC  
 TTTTGTAT

ACGCGTACGCGGCCGCTCGAG - GFP Tag - GTTTAA

**Protein Sequence:**

>RG221377 representing NM\_020774  
 Red=Cloning site Green=Tags(s)

MSNSRNNRVMVEGVGARVVRGPDWKWGKQDGGEGHVGTVRSFESPEEVVVVDNGTAANYRCSGAYDLRI  
 LDSAPTGIKHDGTMCDTCRQPIIGIRWKAECTNYDLCTVCYHGDKHHLRHRFYRITTPGSEVLLLESR  
 RKSKKITARGIFAGARVVRGVDWQWEDQDGGNGRRGKVTETIQDWSASSPHSAAYVLWDNGAKNLYRVGFE  
 GMSDLKCVQDAKGSFYRDHCPVLGEQNGNRNPGGLQIGDLVNIIDLLEIVQSLQHGHGGWTDGMFETLT  
 TTGTVCGIDEDHDIVVQYPSGNRWFNPVAVLTKANIVRSGDAAQGAEGGTSQFQVGDLVQCYDLERIKL  
 LQRGHGEWAEAMLPTLGKVGRVQQIYSDSDLKVEVCGTSWTYNPAAVSKVASAGSAISNASGERLSQLLK  
 KLFETQESGDLNEELVAAAANGDVAKVEDLLKRPDVDVNGQCAGHTAMQAASQNGHVDILKLLKQNVQV  
 EAEDKDGDRVHHAFFGDEGAVIEVLHRGSADLNARNKRRQTPHLIAVNKGHLQVVKTLDFGCHPSLQD  
 SEGDTPLHDAISKRRDDILAVLLEAGADVTITNNGFNALHHAALRGNPSAMRVLLSKLPRPWIVDEKKD  
 DGYTALHLAALNNHVEVAELLVHQGNANLDIQNVNQQTALHLAVERQHTQIVRLLVRAGAKLDIQDKDGD  
 TPLHEALRHHTLSQLRQLQDMQDVGVDAAWEPSKNTLIMGLGTQGAEEKSAASIAACFLAANGADLSIRN  
 KKGQSPLDLPDPNLCKALAKCHKEKVSQVGSRSPTSMISNDSETLEECMVCSMDMKRDTLFGPCGHIATC  
 SLCSRPVKKCLICKEQVQSRKIEECVVCSDKKAAVLFQPCGHMCACENCANLMMKKVCQRAVVERRVFP  
 IMCCGGKSSSEDATDDISSGNIPVLQKDKDNTNVNADVQKLQQQLDIKEQTMCPVCLDRLKNMIFLCGHG  
 TCQLCGDRMSECPICRKAIERILLY

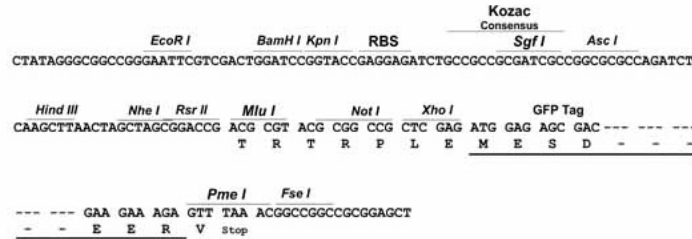
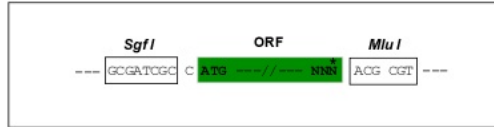
TRTRPLE - GFP Tag - V

**Restriction Sites:**

Sgfl-MluI

**Cloning Scheme:**

Cloning sites used for ORF Shutting:


**ACCN:** NM\_020774

**ORF Size:** 3018 bp

**OTI Disclaimer:** The molecular sequence of this clone aligns with the gene accession number as a point of reference only. However, individual transcript sequences of the same gene can differ through naturally occurring variations (e.g. polymorphisms), each with its own valid existence. This clone is substantially in agreement with the reference, but a complete review of all prevailing variants is recommended prior to use. [More info](#)
**OTI Annotation:** This clone was engineered to express the complete ORF with an expression tag. Expression varies depending on the nature of the gene.

**Components:** The ORF clone is ion-exchange column purified and shipped in a 2D barcoded Matrix tube containing 10ug of transfection-ready, dried plasmid DNA (reconstitute with 100 ul of water).

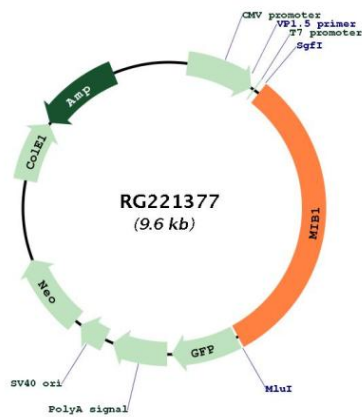
**Reconstitution Method:**

1. Centrifuge at 5,000xg for 5min.
2. Carefully open the tube and add 100ul of sterile water to dissolve the DNA.
3. Close the tube and incubate for 10 minutes at room temperature.
4. Briefly vortex the tube and then do a quick spin (less than 5000xg) to concentrate the liquid at the bottom.
5. Store the suspended plasmid at -20°C. The DNA is stable for at least one year from date of shipping when stored at -20°C.

**RefSeq:** [NM\\_020774.4](#)
**RefSeq Size:** 9308 bp

**RefSeq ORF:** 3021 bp  
**Locus ID:** 57534  
**UniProt ID:** [Q86YT6](#)  
**Cytogenetics:** 18q11.2  
**Protein Families:** Druggable Genome  
**Gene Summary:** This gene encodes a protein containing multiple ankyrin repeats and RING finger domains that functions as an E3 ubiquitin ligase. The encoded protein positively regulates Notch signaling by ubiquitinating the Notch receptors, thereby facilitating their endocytosis. This protein may also promote the ubiquitination and degradation of death-associated protein kinase 1 (DAPK1). [provided by RefSeq, Jun 2013]

### Product images:



Circular map for RG221377