

Product datasheet for **RG221374**

CD147 (BSG) (NM_198590) Human Tagged ORF Clone

Product data:

Product Type: Expression Plasmids
Product Name: CD147 (BSG) (NM_198590) Human Tagged ORF Clone
Tag: TurboGFP
Symbol: BSG
Synonyms: 5F7; CD147; EMMPRIN; EMPRIN; HAb18G; OK; SLC7A11; TCSF
Mammalian Cell Selection: Neomycin
Vector: pCMV6-AC-GFP (PS100010)
E. coli Selection: Ampicillin (100 ug/mL)
ORF Nucleotide Sequence: >RG221374 representing NM_198590
Red=Cloning site Blue=ORF Green=Tags(s)

TTTTGTAATACGACTCACTATAGGGCGGCCGGAATTCGTCGACTGGATCCGGTACCGAGGAGATCTGCC
GCC**CGATCGCC**

ATGGGCACGGCCAACATCCAGCTCCACGGGCTCCAGAGTGAAGGCTGTGAAGTCGTCAGAACACATCA
ACGAGGGGAGACGGCCATGCTGGTCTGCAAGTCAGAGTCCGTGCCACCTGTCACTGACTGGCCTGGTA
CAAGATCACTGACTCTGAGGACAAGGCCCTCATGAACGGCTCCGAGAGCAGGTTCTTCGTGAGTTCCTCG
CAGGGCCGGTCAGAGCTACACATTGAGAACCTGAACATGGAGGCCGACCCCGCCAGTACCGGTGCAACG
GCACCAGCTCCAAGGGCTCCGACCAGGCCATCATCACGCTCCGCGTGCAGCCACCTGGCCGCCCTCTG
GCCCTTCCTGGGCATCGTGGCTGAGGTGCTGGTGCCTGACCATCATCTTCATCTACGAGAAGCGCCGG
AAGCCCGAGGACGTCCTGGATGATGACGACGCCGGCTCTGCACCCTGAAGAGCAGCGGGCAGCACCAGA
ATGACAAAGGCAAGAACGTCCGCCAGAGGAACCTTCC

AG**CGGACCG**ACGCGTACGCGGCCGCTCGAG - GFP Tag - GTTTAA

Protein Sequence: >RG221374 representing NM_198590
Red=Cloning site Green=Tags(s)

MGTANIQLHGPPRVKAVKSSEHINEGETAMLVCKSESVPVTDWAWYKITDSEDKALMNGSESRRFFVSS
QGRSELHIENLMEADPGQYRCNGTSSKGSQAIITLVRVSHLAALWPFLGIVAEVLVLTIIIFIEYKRR
KPEDVLDDDDAGSAPLKSSGQHQNKGKGNVRQRNSS

SGPTRRRLE - GFP Tag - V

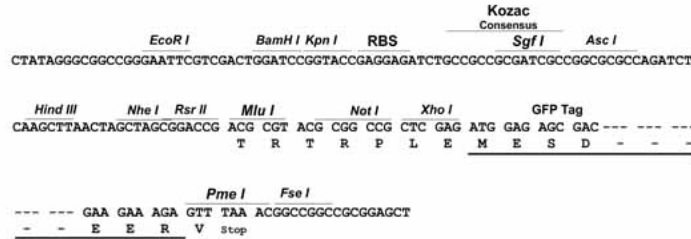
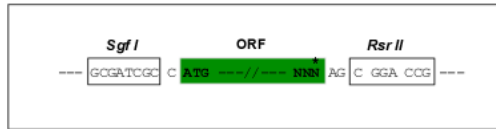
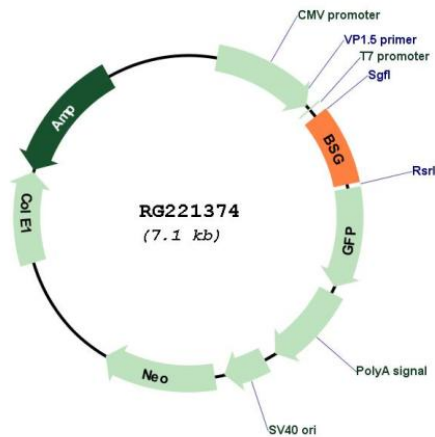
Restriction Sites: Sgfl-RsrII



[View online »](#)

Cloning Scheme:

Cloning sites used for ORF Shuttling:


Plasmid Map:

ACCN: NM_198590

ORF Size: 528 bp

OTI Disclaimer: The molecular sequence of this clone aligns with the gene accession number as a point of reference only. However, individual transcript sequences of the same gene can differ through naturally occurring variations (e.g. polymorphisms), each with its own valid existence. This clone is substantially in agreement with the reference, but a complete review of all prevailing variants is recommended prior to use. [More info](#)
OTI Annotation: This clone was engineered to express the complete ORF with an expression tag. Expression varies depending on the nature of the gene.

Components:	The ORF clone is ion-exchange column purified and shipped in a 2D barcoded Matrix tube containing 10ug of transfection-ready, dried plasmid DNA (reconstitute with 100 ul of water).
Reconstitution Method:	<ol style="list-style-type: none">1. Centrifuge at 5,000xg for 5min.2. Carefully open the tube and add 100ul of sterile water to dissolve the DNA.3. Close the tube and incubate for 10 minutes at room temperature.4. Briefly vortex the tube and then do a quick spin (less than 5000xg) to concentrate the liquid at the bottom.5. Store the suspended plasmid at -20°C. The DNA is stable for at least one year from date of shipping when stored at -20°C.
RefSeq:	NM_198590.3
RefSeq Size:	1766 bp
RefSeq ORF:	531 bp
Locus ID:	682
UniProt ID:	P35613
Cytogenetics:	19p13.3
Protein Families:	Druggable Genome, ES Cell Differentiation/IPS, Transmembrane
Gene Summary:	The protein encoded by this gene, basigin, is a plasma membrane protein that is important in spermatogenesis, embryo implantation, neural network formation, and tumor progression. Basigin is also a member of the immunoglobulin superfamily, ubiquitously expressed in various tissues. Multiple transcript variants encoding different isoforms have been found for this gene. [provided by RefSeq, May 2020]