

Product datasheet for **RG221370**

ATP10D (NM_020453) Human Tagged ORF Clone

Product data:

Product Type:	Expression Plasmids
Product Name:	ATP10D (NM_020453) Human Tagged ORF Clone
Tag:	TurboGFP
Symbol:	ATP10D
Synonyms:	ATPVD
Mammalian Cell Selection:	Neomycin
Vector:	pCMV6-AC-GFP (PS100010)
E. coli Selection:	Ampicillin (100 ug/mL)
ORF Nucleotide Sequence:	>RG221370 representing NM_020453 Red=Cloning site Blue=ORF Green=Tags(s)

TTTTGTAATACGACTCACTATAGGGCGGCCGGAATTCGTCGACTGGATCCGGTACCGAGGAGATCTGCC
GCC**CGATCGCC**

ATGACTGAGGCTCTCCAATGGGCCAGATATCACTGGCGACGGCTGATCAGAGGTGCAACCAGGGATGATG
ATTCAGGGCCATACAACTATTCCTCGTTGCTCGCCTGTGGGCGCAAGTCTCTCAGACCCCTAAACTGTC
AGGAAGGCACCGGATTGTTGTTCCCCACATCCAGCCCTCAAGGATGAGTATGAGAAGTTCTCCGGAGCC
TATGTGAACAATCGAATACGAACAACAAAGTACACACTTCTGAATTTTGTCCAAGAAATTTATTTGAAC
AATTTACAGAGCTGCCAATTTATATTTCTGTTCCTAGTTGTCCTGAAGTGGTACCTTTGGTAGAAGC
CTTCCAAAAGGAAATCACCATGTTGCCTCTGGTGGTGGTCTTACAATTATCGCAATTAAGATGGCCTG
GAAGGTTATCGGAAATACAAAATTGACAAAACAGATCAATAATTTAATAACTAAAGTTTATAGTAGGAAAG
AGAAAAATACATTGACCGATGCTGAAAGACGTTACTGTTGGGGACTTTATTCGCTCTCTGCAACGA
GGTCATCCCTGCAGACATGGTACTACTCTTTCCACTGATCCAGATGGAATCTGTACATTGAGACTTCT
GGTCTTGATGGAGAGCAATTTAAAACAGAGGCAGGTGGTTCGGGGATATGCAGAACAGGACTCTGAAG
TTGATCCTGAGAAGTTTCCAGTAGGATAGAATGTGAAAGCCAAACAATGACCTCAGCAGATCCGAGG
CTTCTAGAACATTCCAACAAAGAACCGTGGGTCTCAGTAAAGAAAATTTGTTGCTTAGAGGATGCACC
ATTAGAAAACAGAGGCTGTTGTGGCATTGTGGTTTATGCAGGCCATGAAACCAAGCAATGCTGAACA
ACAGTGGGCCACGGTATAAGCGCAGCAAATTAGAAAGAAGGCAACACAGATGTCTCTGGTGTGTCAT
GCTTCTGGTCATAATGTGCTTAAGTGGCGCAGTAGGTCATGGAATCTGGCTGAGCAGGTATGAAAAGATG
CATTTTTTCAATGTTCCCGAGCCTGATGGACATATCATATCACCCTGTTGGCAGGATTTTATATGTTTT
GGACCATGATCATTTTGTACAGGTCTTGATTCTATTCTCTATGTTTCCATCGAAATTGTGAAGCT
TGGACAAATATATTTCAATCAAAGTGTGTTTCTACAATGAAAAATGGATTCTATTGTTCCAGTGC
CGAGCCCTGAACATCGCCGAGGATCTGGGACAGATTGAGTACCTTTTCCGATAAGACAGGAACCCCTCA
CTGAGAATAAGATGGTTTTTCAAGATGTAGTGTGGCAGGATTTGATTACTGCCATGAAGAAAATGCCAG
GAGTTGGAGTCTATCAGGAAGCTGTCTGAAGATGAAGATTTTATAGACACAGTCAGTGGTTCCCTC



[View online >](#)

AGCAATATGGCAAAACCGAGAGCCCCAGCTGCAGGACAGTTCATAATGGGCCTTTGGGAAATAAGCCCT
CAAATCATCTTGCTGGGAGCTCTTTTACTCTAGGAAGTGGAGAAGGAGCCAGTGAAGTGCCTCATTCCAG
ACAGGCTGCTTTTCAGTAGCCCCATTGAAACAGACGTGGTACCAGACACCAGGCTTTTAGACAAATTTAGT
CAGATTACACCTCGGCTCTTTATGCCACTAGATGAGACCATCCAAAATCCACCAATGGAACTTTGTACA
TTATCGACTTTTTTCATTGCATTGGCAATTTGCAACACAGTAGTGGTTTCTGCTCCTAACCAACCCCGACA
AAAGATCAGACACCCTTCACTGGGGGGTTGCCATTAAGTCTTTGGAAGAGATTAAGTCTTTTCCAG
AGATGGTCTGCCGAAGATCAAGTTCCATCGCTTAACAGTGGGAAAGAGCCATCTTCTGGAGTTCCAA
ACGCCCTTTGTGAGCAGACTCCCTCTCTTTAGTCAATGAAACCAGCTTACCTGTGGAGGAAGAGGTCTC
CCAGGTGTGTGAGAGCCCCAGTCTCCAGTAGCTCAGCTTGTGCACAGAAACAGAGAAACAACACGGT
GATGCAGGCCTCCTGAATGGCAAGGCAGAGTCCCTCCCTGGACAGCCATTGGCCTGCAACCTGTGTATG
AGGCCGAGAGCCCAGACGAAGCGGCCTTAGTGTATGCCGCCAGGGCTTACCAATGCACCTTACGGTCTCG
GACACCAGAGCAGGTGATGGTGGACTTTGCTGCTTTGGGACCATTAACATTTCAACTCTACACATCCTG
CCCTTTGACTCAGTAAGAAAAAGAATGTCTGTTGGTCCGACACCCTCTTCCAATCAAGTTGTGGTGT
ATACGAAAGGCGTGATTCTGTGATCATGGAGTACTGTGGTGGCTTCCCAGATGGAGCAAGTCTGGA
GAAACAACAGATGATAGTAAGGGAGAAAACCCAGAAGCACTTGGATGACTATGCCAAACAAGGCCTTCGT
ACTTTATGTATAGCAAAGAAGGTGATGAGTGACACTGAATATGCAGAGTGGCTGAGGAATCATTTTTAG
CTGAAACCAGCATTGACAACAGGGAAGAATTACTACTTGAATCTGCCATGAGGTTGGAGAACAACCTTAC
ATTACTTGGTGTACTGGCATTGAAGACCGTCTGCAGGAGGGAGTCCCTGAATCTATAGAAGCTCTTAC
AAAGCGGGCATCAAGATCTGGATGCTGACAGGGGACAAGCAGGAGACAGCTGTCAACATAGCTTATGCAT
GCAAACTACTGGAGCCAGATGACAAGCTTTTTATCCTCAATACCCAAAGTAAAGATGCCTGTGGGATGCT
GATGAGCACAATTTGAAAGAACTTCAAGAAAAGTCAAGCCCTGCCAGAGCAAGTGTCAATTAAGTAA
GATTTACTTCAGCCTCCTGTCCCCGGGACTCAGGGTACGAGCTGGACTCATTACTCTGGGAGGACCC
TGGAGTTTCCCCTGCAAGAAAGTCTGCAAAAGCAGTTCCTGGAAGTACATCTTGGTGTCAAGTGTGGT
CTGCTGCCGAGCCACACCGCTGCAGAAAAGTGAAGTGGTGAATTTGGTCCGACGCCATCTCCAGGTGATG
ACCCTTGCTATTGGTGTGGTGCCTAATGATGTTAGCATGATACAAGTGGCAGACATTGGGATAGGGTCT
CAGGTCAAGAAGGCATGCAGGCTGTGATGGCCAGTACTTTGCCGTTTATCAGTTCAAACATCTCAGCAA
GCTCCTCTTGTCCATGGACACTGGTGTATACACGGCTTTCCAACATGATTCTCTATTTTTTCTATAAG
AATGTGGCCTATGTGAACCTCCTTTTCTGGTACCAGTCTTTTGTGGATTTTCAGGGACATCCATGACTG
ATTACTGGGTTTTGATCTTCTTCAACCTCCTCTTACATCTGCCCTCCTGTCAATTTATGGTGTGTTGGA
GAAAGATGTGCTGCAGAGACCCTCATGCAACTGCCTGAACTTTACAGAAGTGGTCAAGAAATCAGAGGCA
TACTTACCCCATACCTTCTGGATCACCTTATTGGATGCTTTTTATCAAAGCCTGGTCTGCTTCTTTGTGC
CTTATTTTACCTACCAGGCTCAGATACTGACATCTTTGCATTTGGAAACCCCTGAACACAGCCGCTCT
GTTTCATCGTTCTCCTCCATCTGGTCATTGAAAGCAAGAGTTTACTTGGATTCACTTGTGGTCACTATT
GGTAGCATCTTGTCTTATTTTTATTTGCCATAGTTTTTGGAGCCATGTGTGTAACCTTGCAACCCACCAT
CCAACCTTACTGGATTATGCAGGAGCACATGCTGGATCCAGTATTCTACTTAGTTTGTATCCTCACGAC
GTCCATTGCTCTTCTGCCAGGTTTGTATACAGAGTCTTTCAGGGATCCCTGTTTCCATCTCCAATCTG
AGAGCTAAGCACTTTGACAGACTAACTCCAGAGGAGAGGACTAAAGCTCTCAAGAAGTGGAGAGGGGCTG
GAAAGATGAATCAAGTGCATCAAAGTATGCTAACCAATCAGCTGGCAAGTCAGGAAGAAGACCCATGCC
TGGCCCTTCTGCTGATTTGCAATGAAGTCAAGTTCCTGTGCTATTGAGCAAGGAACTTATCTCTG
TGTGAGACTGCTTTAGATCAAGGCTACTCTGAAACTAAGGCCTTTGAGATGGCTGGACCCCTCAAAGGTA
AAGAAAGC

AGCGGACCGACGCGTACGCGGCCGCTCGAG - GFP Tag - GTTTAA

Protein Sequence: >RG221370 representing NM_020453
Red=Cloning site Green=Tags(s)

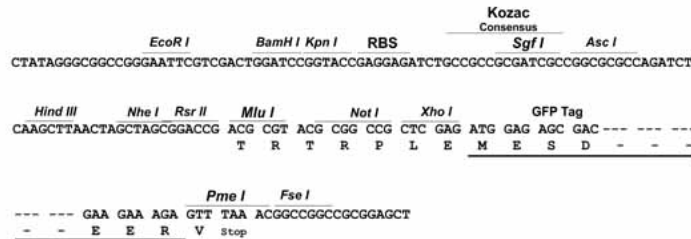
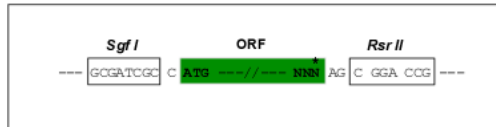
MTEALQWARYHWRRIRGATRDDDSGPYNYSSLLACGRKSSQTPKLSGRHRIVPHIQPFKDEYEKFSGA
 YVNNRIRTTKYTLNLFVPRNLEQFHRAANLYFLVLVNLNWVPLVEAFQKEITMLPLVVVLTIIAIKDGL
 EGYRKYKIDKQINNLITKVYSRKEKKYIDRCWKDVTVGDFIRLSCNEVIPADMVLLFSTDPDGICHIETS
 GLDGESNLKQRQVVRGYAEQDSEVDPEKFSRIECESPNNDLSRFGRGLEHSNKERVGLSKENLLLRGCT
 IRNTEAVVGIIVYAGHETKAMLNNSGPRYKRSKLERANTDVLWCVMMLVIMCLTGAVGHGIWLSRYEKM
 HFFNVPEPDGHIISPLLAFYMFWTMIILLQVLIPIISLYVSIEIVKLGQIYFIQSDVDFYNEKMDSIVQC
 RALNIAEDLGQIQYLFSDKTGTLTENKMFRRCSVAGFDYCHEENARRLESYQEAVSEDEDFIDTVSGSL
 SNMAKPRAPSCRTVHNGPLGNKPSNHLGSSFTLGSSEGASEVPHSRQAASFSSPETDVPDTRLLDKFS
 QITPRLFMPLDETIQNPPMETLYIIDFFIALAICNTVVVSAPNQPRQKIRHPSLGGPLIKSLEEIKSLFQ
 RWSVRRSSPSLNSGKEPSSGVPNAFVSRPLFSRMKPASPVEEVSQVCESPQCSSSSACCTETEKQHG
 DAGLLNGKAESLPGQPLACNLCEYAESPDAAALVYAARAYQCTLRSRTPQVMVDFAAALGPLTFQLLHIL
 PFDSVRKRMSVVRHPLSNQVVVYTKGADSVIMELL SVASPDGASLEKQQMIVREKTQKHLDDYAKQGLR
 TLCIAKKVMSDTEYAEWLRNHFLAETSIDNREELLESAMRLENKLTLLGATGIEDRLQEGVPESIEALH
 KAGIKIWMLTGDKQETAVNIAACKLLEPDDKLFILNTQSKDACGMLMSTILKELQKKTQALPEQVSLSE
 DLLQPPVPRDSGLRAGLIITGRTLEFALQESLQKQFLELTSWCQAVVCCRATPLQKSEVVKLVRSHLQVM
 TLAIGDGDANDVSIQVADIGIGVSGQEQGMQAVMASDFAVYQFKHLSKLLLVHGHWCYTRLNMMILYFFYK
 NVAYVNLWFYQFFCGFSGTSMTDYWVLIFFNLLFTSAPPVIYGVLEKDVSAETLMQLPELYRSGQKSEA
 YLPHFTWITLLDAFYQSLVCFVVPYFTYQGSDDIFAFGNPLNTAALFIVLLHLVIESKSLTWIHLVII
 GSILSYFLFAIVFGAMCVTCNPPSNPYWIMQEHLDPVFLVCILTTSIALLPRFYRVLQGSFPSPIL
 RAKHFDRLTPEERTKALKKWRGAGKMNQVTSKYANQSAGKSGRRPMPGPSAVFAMKSASSCAIEQGNLSL
 CETALDQGYSETKAFEMAGPSKGGKES

SGPTRRRLE - GFP Tag - V

Restriction Sites: SgfI-RsrII

Cloning Scheme:

Cloning sites used for ORF Shuttling:

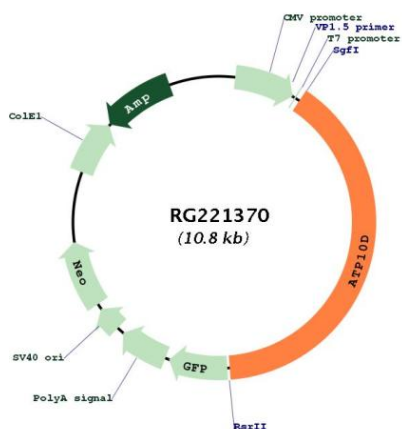


ACCN: NM_020453

ORF Size: 4278 bp

OTI Disclaimer:	The molecular sequence of this clone aligns with the gene accession number as a point of reference only. However, individual transcript sequences of the same gene can differ through naturally occurring variations (e.g. polymorphisms), each with its own valid existence. This clone is substantially in agreement with the reference, but a complete review of all prevailing variants is recommended prior to use. More info
OTI Annotation:	This clone was engineered to express the complete ORF with an expression tag. Expression varies depending on the nature of the gene.
Components:	The ORF clone is ion-exchange column purified and shipped in a 2D barcoded Matrix tube containing 10ug of transfection-ready, dried plasmid DNA (reconstitute with 100 ul of water).
Reconstitution Method:	<ol style="list-style-type: none"> 1. Centrifuge at 5,000xg for 5min. 2. Carefully open the tube and add 100ul of sterile water to dissolve the DNA. 3. Close the tube and incubate for 10 minutes at room temperature. 4. Briefly vortex the tube and then do a quick spin (less than 5000xg) to concentrate the liquid at the bottom. 5. Store the suspended plasmid at -20°C. The DNA is stable for at least one year from date of shipping when stored at -20°C.
RefSeq:	NM_020453.2 , NP_065186.2
RefSeq Size:	6550 bp
RefSeq ORF:	4281 bp
Locus ID:	57205
UniProt ID:	Q9P241
Cytogenetics:	4p12
Protein Families:	Transmembrane
Gene Summary:	Catalytic component of a P4-ATPase flippase complex which catalyzes the hydrolysis of ATP coupled to the transport of aminophospholipids from the outer to the inner leaflet of various membranes and ensures the maintenance of asymmetric distribution of phospholipids. Phospholipid translocation seems also to be implicated in vesicle formation and in uptake of lipid signaling molecules (Probable).[UniProtKB/Swiss-Prot Function]

Product images:



Circular map for RG221370