

## Product datasheet for **RG221347**

### **BCL2L12 (NM\_138639) Human Tagged ORF Clone**

#### Product data:

Product Type:	Expression Plasmids
Product Name:	BCL2L12 (NM_138639) Human Tagged ORF Clone
Tag:	TurboGFP
Symbol:	BCL2L12
Mammalian Cell Selection:	Neomycin
Vector:	pCMV6-AC-GFP (PS100010)
E. coli Selection:	Ampicillin (100 ug/mL)
ORF Nucleotide Sequence:	>RG221347 representing NM_138639 Red=Cloning site Blue=ORF Green=Tags(s)

TTTTGTAATACGACTCACTATAGGGCGGCCGGGAATTCGTCGACTGGATCCGGTACCGAGGAGATCTGCCGCC**CGATCGCC**

ATGGGACGGCCCGCTGGGCTGTTCCCGCCCTATGCCCTTTTTGGGTTCCGGCCAGAGGCATGCTGGGAGCGTCACATGCAAATTGAGCGTGCACCCAGCGTTCGCCCTTTCTACGCTGGGCCGTTATCGACCCGGCCCAGTGCAGGCGCGGAAAGTTGAACTAATAAAGTTGTACGAGTTCAGTGGAGGAGACCGCAAGTTGAGTGGAGGAGGCGCGTGGGGCCCGGACAGGTGCCTCCATGGCAGGCTCGAAGAGCTGGGGCTCCGGGAAGACAGCTGAGGGTCTAGCTGCCTTCTTAGGCGTGGTGGAGGCTGCCGGTCTCCTGTTCCAATCCACCTAGAAGCCTGCCAAGAAGGCCAACAGACTTCCTGAGCCGCCTTCAAGATGTCTTCCCTGCTCCCTGGGGCGAGGAGCAGCCCCCTCTGAGTCCCCTCGGCCTTGCTCTCTGCCATCCGCCCTGTATGGTTAGAGCCTGGCCAGCTACTCCAGACTTCTATGCTTTGGTGGCCAGCGGCTGGAACAGCTGGTCCAAGAGCAGCTGAAATCTCCGCCAGCCAGAAATTACAGGGTCCCCATCGACAGAGAAGGAAGCCATACTGCGGAGGCTGGTGGCCCTGCTGGAGGAGGAGGCAGAAGTCATTAACCAGAAGCTGGCCTCGGACCCCGCCCGCGCAGCAAGCTGGTCCGCTGTCTCCGACTCTTTCGCCCGCCTGGTGGAGCTGTTCTGTAGCCGGGATGACAGCTCTGCCAAGCCGAGCATGCCCGGGCCCCGCTCCTTCCCGGAGCCCTGGCCCGCTGGCCCTAGCCATGGAGCTGAGCCGGCGCTGGCCGGGCTGGGGGCACCCTGGCCGACTCAGCGTGGAGCAGTGCACAGCTTACGCCCTGGATCCAGGCCACGGGGCTGGGAGGCATCCTGGCTGTTTACCCGTGGACTTGAATTGCCATTGGAC

**ACGCGT**ACGCGGCCGCTCGAG - GFP Tag - GTTTAA



[View online »](#)

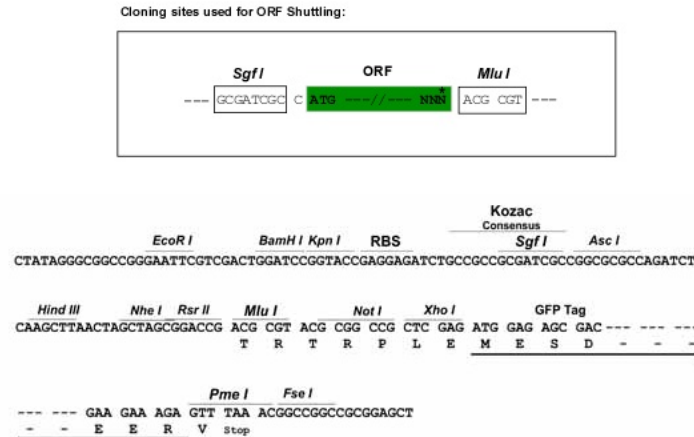
**Protein Sequence:** >RG221347 representing NM\_138639  
 Red=Cloning site Green=Tags(s)

MGRPAGLFPPLCPFLGFRPEACWERHMQIERAPSVPPFLRWAGYRPGPVRRRGKVELIKFVRVQWRRPQV  
 EWRRRRWGPGPGASMAGSEELGLREDTLRVLAFLRRGEAAGSPVTPPRSPAQEEPTDFLSRLRRLPC  
 SLGRGAAPSESPRPCSLPIRPCYGLEPGPATPDFYALVAQRLEQLVQEQLKSPSPPELQGPPSTEKEAIL  
 RRLVALLLEEAEVINQKLASDPALRSKLVRLSSDSFARLVELFCSRDDSSRPSRACPGPPPPSPEPLARL  
 ALAMELSRRVAGLGGTLAGLSVEHVHSFTPWIIQAHGGWEGILAVSPVDLNLPLD

TRTRPLE - GFP Tag - V

**Restriction Sites:** SgfI-MluI

**Cloning Scheme:**



**ACCN:** NM\_138639

**ORF Size:** 1002 bp

**OTI Disclaimer:** The molecular sequence of this clone aligns with the gene accession number as a point of reference only. However, individual transcript sequences of the same gene can differ through naturally occurring variations (e.g. polymorphisms), each with its own valid existence. This clone is substantially in agreement with the reference, but a complete review of all prevailing variants is recommended prior to use. [More info](#)

**OTI Annotation:** This clone was engineered to express the complete ORF with an expression tag. Expression varies depending on the nature of the gene.

**Components:** The ORF clone is ion-exchange column purified and shipped in a 2D barcoded Matrix tube containing 10ug of transfection-ready, dried plasmid DNA (reconstitute with 100 ul of water).

**Reconstitution Method:**

1. Centrifuge at 5,000xg for 5min.
2. Carefully open the tube and add 100ul of sterile water to dissolve the DNA.
3. Close the tube and incubate for 10 minutes at room temperature.
4. Briefly vortex the tube and then do a quick spin (less than 5000xg) to concentrate the liquid at the bottom.
5. Store the suspended plasmid at -20°C. The DNA is stable for at least one year from date of shipping when stored at -20°C.

**RefSeq:** [NM\\_138639.1](#), [NP\\_619580.1](#)

**RefSeq Size:** 1893 bp

**RefSeq ORF:** 753 bp

**Locus ID:** 83596

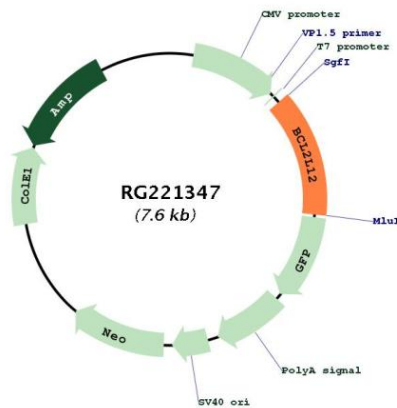
**UniProt ID:** [Q9HB09](#)

**Cytogenetics:** 19q13.33

**Protein Families:** Druggable Genome

**Gene Summary:** This gene encodes a member of a family of proteins containing a Bcl-2 homology domain 2 (BH2). The encoded protein is an anti-apoptotic factor that acts as an inhibitor of caspases 3 and 7 in the cytoplasm. In the nucleus, it binds to the p53 tumor suppressor protein, preventing its association with target genes. Overexpression of this gene has been detected in a number of different cancers. There is a pseudogene for this gene on chromosome 3. Alternative splicing results in multiple transcript variants. [provided by RefSeq, Sep 2013]

### Product images:



Circular map for RG221347