

Product datasheet for **RG221341**

AGAP1 (NM_001037131) Human Tagged ORF Clone

Product data:

Product Type:	Expression Plasmids
Product Name:	AGAP1 (NM_001037131) Human Tagged ORF Clone
Tag:	TurboGFP
Symbol:	AGAP1
Synonyms:	AGAP-1; CENTG2; cnt-g2; GGAP1
Mammalian Cell Selection:	Neomycin
Vector:	pCMV6-AC-GFP (PS100010)
E. coli Selection:	Ampicillin (100 ug/mL)



[View online »](#)

ORF Nucleotide Sequence:

>RG221341 representing NM_001037131
 Red=Cloning site Blue=ORF Green=Tags(s)

TTTTGTAATACGACTCACTATAGGGCGGCCGGAATTCGTCGACTGGATCCGGTACCGAGGAGATCTGCC
 GCC**CGATCGCC**

ATGAACTACCAGCAGCAGCTGGCCAACCTCGGCTGCCATCCGGGCCGAGATCCAGCGCTTCGAGTCGGTCC
 ACCCCAACATCTACTCCATCTACGAGCTGCTGGAGCGCGTGGAGGAGCCGGTGTGCAGAACCAGATCCG
 GGAGCAGTCATCGCCATCGAAGATGCCTTCGTGAACAGCCAGGAATGGACGCTGAGTCGATCTGTCCCG
 GAGCTCAAAGTGGGAATTGTGGTAACCTGGCCAGCGGCAAGTCTGCCCTGGTGCACCGGTACCTGACGG
 GCACATATGTCCAGGAGGAGTCTCCGGAAGGTGGCAGGTTCAAGAAAGAGATTGTCGTTGATGGACAGAG
 CTATCTGCTGCTGATCAGAGATGAAGGGGGCCCCCGAGGGCGCAGTTTCCCATGTGGGTGGACGCTGTT
 ATATTTGTCTTCAGCTTGGAGGATGAAATAAGTTTCCAGACCGTTTACCCTACTACAGTCGAATGGCCA
 ACTATCGGAACACGAGCGAGATTCTCTGGTTCTGGTGGGAACCCAGGATGCCATAAGTTCTGCTAACCC
 GAGGGTCAATCGATGACGCCAGGGCGAGGAAGCTCTCCAACGACCTGAAACGGTGCACGACTACGAGACG
 TGTGCTACATACGGGCTGAATGTGGAGAGGGTCTTCCAGGACGTTGCCAGAAAGATTGTTGCCACAAGGA
 AGAAGCAGCAGCTGTCCATAGGACCCCTGCAAGTCGCTACCTAATTCTCCCAGCCATTCTCCGCTGTTC
 CGCGCAGGTGTCTGCCGTGCACATCAGCCAGACAAGTAATGGAGGTGGGAGTTTAAAGCGACTATTCTCC
 TCCGTTCCATCGACTCCCAGCACCAGCCAGAAGGAACCTCCGATCGATGTTTCTCCCACTGCCAACACGC
 CCACGCCCGTTTCCGAAGCAGTCTAAGCGCCGGTCCAACCTGTTACCTCTCGAAAGGGAGCGACCCAGA
 CAAAGAGAAGAAAGGCCCTGGAGAGTCGTGCGGACAGCATGGGAGCGGCCGAGCCATCCCAATTAACAG
 GGCATGCTGTTGAAGCGAAGTGGCAAATCGTTGAATAAAGAGTGGAAAAAGAAATATGTCACCCTGTGTG
 ACAATGGCGTGTGACCTATCATCCCAGTTTACATGATTACATGCAGAATGTTTCATGGTAAGGAGATTGA
 CCTTCTGAGAACCCTGTGAAAGTCCCAGGGAAGAGGCCACCCCGAGCCAGTCAAGCTGCGCACCCATC
 TCCAGCCCTAAAACCAATGGCCTATCCAAGGACATGAGCAGTTTACACATCTCACCAATTCAGGGAATG
 TCACTAGTGCATCTGGGTCTCAGATGGCAAGCGGCATCAGCCTGGTCTCCTTCAACAGCCGACCCGACGG
 CATGCACCAGCGCTCCTACTCAGTCTCCAGTGCCGACCGTGGAGTGAGGCTACGGTCAATGCAAACTCG
 GCCATCAGCAGTGACACAGGGCTGGGTGACTCCGTATGCTCCAGCCCCAGTATCTCCAGCACCACCAGCC
 CCAAGCTCGACCCGCCCCCTCCCTCACGCCAACAGAAAGAAGCACCGAAGGAAGAAAAGCACTAGCAA
 CTTCAAAGCCGACGGCCTGTCCGGCACTGCTGAAGAACAAGAAGAAAATTTGAGTTTATCATTGTGTCC
 CTCCTGCGCAACATGGCACTTTGAAGCCACGACGATGAGGAGCGGGACGCCTGGGTCCAAGCCATCG
 AGAGCCAGATCCTGGCCAGCCTGCAGTCGTGCGAGAGCAGCAAGAACAAGTCCCGGCTGACGAGCCAGAG
 CGAGGCCATGGCCCTGCAGTCGATCCGGAACATGCGCGGGAACCTCCCACTGTGTGGACTGCGAGACCCAG
 AATCCCAACTGGGCCAGTTTGAACCTGGGAGCCCTCATGTGCATCGAATGCTCAGGGATCCACCGGAATC
 TTGGCACCCACCTTTCCCGAGTCCGATCTCTGGACCTGGATGACTGGCCAGTCCGAGCTCATCAAGGTGAT
 GTCATCCATCGGGAACGAGCTAGCCAACAGCGTCTGGGAAGAGAGCAGCCAGGGGCGGACGAAACCATCG
 GTAGACTCCACAAGGGAAGAGAAGGAACGGTGGATCCGTGCCAAGTACGAGCAGAAGCTCTTCTGGCCC
 CGCTGCCCTGCACGGAGCTGTCCCTGGCCAGCACCTGCTGCGGGCCACCGCCGACGAGGACCTGCGGAC
 GGCCATCCTGCTGCTGGCACACGGCTCCCGGACGAGGTGAACGAGACCTGCGGGGAGGGAGACGGCCCG
 ACGGCGCTGCATCTGGCCTGCCGCAAGGGGAATGTGGTCTGCGCAGCTCCTGATCTGGTACGGAGTGG
 ACGTACGGCCCGAGATGCCACGGGAACAGCTCTGGCCTACGCCCGGACGGCCTCCAGCCAGGAGTG
 CATCGACGTGCTGCTGAGTACGGCTGCCCGACGAGCGCTTCTGCTCATGGCCACCCCTAACCTGTCC
 AGGAGAAACAATAACCGGAACAACAGCAGTGGGAGGGTGCCACCATCATC

ACGGTACGCGGCCGCTCGAG - GFP Tag - GTTTAA

Protein Sequence: >RG221341 representing NM_001037131
Red=Cloning site Green=Tags(s)

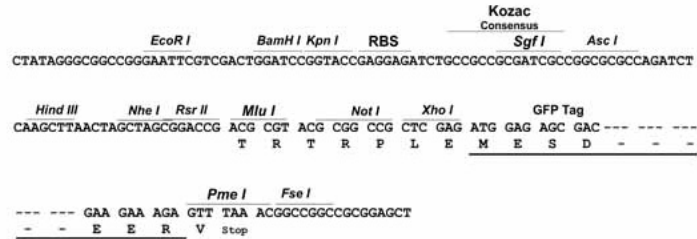
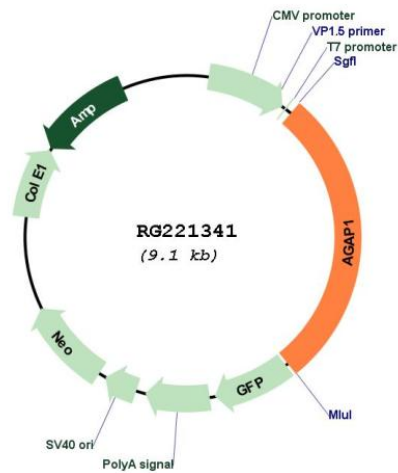
MNYQQQLANSAAIRAEIQRFEVHPNIYSIYELLERVEEPLVQNQIREHVIAIEDAFVNSQEWTLRSVPELKVGI VGNLASGKSALVHRYL TGTYYVQEESPEGGRFKKEIVVDGQSYLLLIRDEGGPPEAQFAMWVDAVIFVFSLEDEISFQT VYHYYSRMAN YRNTSEIPLVLVGTQDAISSANPRVIDDARARKLSNDLKRCTYYETCATYGLNVERVFQDVAQKIVATRKKQQLSIGPCKSLPNSPSHSSVCSAQVSAVHISQTSNGGGSLSDYSSVSPSTPSTSQKELRIDVPPTANTPTPVRKQSKRRSNLFTSRKGS DPKKKGLESRADSIGSGRAIPIKQGMLLKRSGKSLNKEWKKKYVTLCDNGVLTYPHSLHDYMQNVHGKEIDLLRRTTVKVPKRP PRATSACAPISSPKTNGLSKDMSSLHISPNSGNVTSASGSQMASGISLVSFNSRPDGMHQRSYSVSSADQWSEATVIANS AIISSDTGLGDSVCSSPISSTTSPKLDPPPSPHANRKKHRRKKSTSNFKADGLSGTAAEEQEEENFEFIIIVSLTGQTWHF EATTYEERDAWVQAI ESQILASLQSC ESSKNKSRLTSQSEAMALQSIRNMRGNSHCVD CETQNPNWASLNLGALMCIECSGIHRNLGTHLSRVSLDLD DWPVELIKVMSSIGNELANSVWEESSQGR TKPSVDSTREEKERWIRAKYEQKFLA PLPCTELSLGQHLLRATADEDLRTAII LLLAHGSRDEVNETCGEGDGR TALHLACRKG NVVLAQLLIWYGVDVTARDAHGNTALAYARQASSQECIDVLLQYGC PDERFVLMATPNLS RRNNRRNNSSGRVPTII

TRTRPLE - GFP Tag - V

Restriction Sites: Sgfl-MluI

Cloning Scheme:

Cloning sites used for ORF Shutting:


Plasmid Map:


ACCN:	NM_001037131
ORF Size:	2571 bp
OTI Disclaimer:	The molecular sequence of this clone aligns with the gene accession number as a point of reference only. However, individual transcript sequences of the same gene can differ through naturally occurring variations (e.g. polymorphisms), each with its own valid existence. This clone is substantially in agreement with the reference, but a complete review of all prevailing variants is recommended prior to use. More info
OTI Annotation:	This clone was engineered to express the complete ORF with an expression tag. Expression varies depending on the nature of the gene.
Components:	The ORF clone is ion-exchange column purified and shipped in a 2D barcoded Matrix tube containing 10ug of transfection-ready, dried plasmid DNA (reconstitute with 100 ul of water).
Reconstitution Method:	<ol style="list-style-type: none">1. Centrifuge at 5,000xg for 5min.2. Carefully open the tube and add 100ul of sterile water to dissolve the DNA.3. Close the tube and incubate for 10 minutes at room temperature.4. Briefly vortex the tube and then do a quick spin (less than 5000xg) to concentrate the liquid at the bottom.5. Store the suspended plasmid at -20°C. The DNA is stable for at least one year from date of shipping when stored at -20°C.
RefSeq:	NM_001037131.3
RefSeq Size:	10868 bp
RefSeq ORF:	2574 bp
Locus ID:	116987
UniProt ID:	Q9UPQ3
Cytogenetics:	2q37.2
Protein Pathways:	Endocytosis
Gene Summary:	This gene encodes a member of an ADP-ribosylation factor GTPase-activating protein family involved in membrane trafficking and cytoskeleton dynamics. This gene functions as a direct regulator of the adaptor-related protein complex 3 on endosomes. Multiple transcript variants encoding different isoforms have been found for this gene. [provided by RefSeq, Oct 2011]