

## Product datasheet for **RG221337**

### **TNFAIP3 (NM\_006290) Human Tagged ORF Clone**

#### **Product data:**

Product Type:	Expression Plasmids
Product Name:	TNFAIP3 (NM_006290) Human Tagged ORF Clone
Tag:	TurboGFP
Symbol:	TNFAIP3
Synonyms:	A20; AISBL; OTUD7C; TNFA1P2
Mammalian Cell Selection:	Neomycin
Vector:	pCMV6-AC-GFP (PS100010)
E. coli Selection:	Ampicillin (100 ug/mL)



[View online »](#)

**ORF Nucleotide Sequence:**

>RG221337 representing NM\_006290  
 Red=Cloning site Blue=ORF Green=Tags(s)

TTTTGTAATACGACTCACTATAGGGCGGCCGGAATTCGTCGACTGGATCCGGTACCGAGGAGATCTGCC  
 GCC**CGCATCGCC**

ATGCTAAGAAGTTTGAATCAGGTTCCAATTTGCCCCCTTTGAAAGTGGGTGGAATTTACTTGCCTCTCC  
 ACTGGCCTGCCAGGAATGCTACAGATACCCATTGTTCTCGGCTATGACAGCCATCATTTTGTACCCTT  
 GGTGACCTGAAGGACAGTGGGCTGAAATCCGAGCTGTTCCACTTGTAAACAGAGACCGGGAAGATT  
 GAAGACTTAAAGTTCACTTTTTGACAGATCCTGAAAATGAGATGAAGGAGAAGCTCTTAAAGAGTACT  
 TAATGGTGATAGAAATCCCGTCCAAGGCTGGGACCATGGCACAACCTCATCTCATCAATGCCGAAAGTT  
 GGATGAAGCTAATTACAAAAGAAATCAATCTGGTAGATGATTACTTTGAACTTGTTCAGCATGAGTAC  
 AAGAAATGGCAGGAAAACAGCGAGCAGGGGAGGAGAGGGGCACGCCAGAATCCCATGGAACCTCCG  
 TGCCCCAGCTTTCTCATGGATGTAATGTGAAACGCCCAACTGCCCTTCTCATGTCTGTGAACAC  
 CCAGCCTTATGCCATGAGTGTCTAGAGAGCGGCAAAAGAATCAAACAAACTCCAAAGCTGAACTCC  
 AAGCCGGGCCCTGAGGGCTCCCTGGCATGGCGCTCGGGGCTCTCGGGGAGAAGCCTATGAGCCCTGG  
 CGTGGAACCTGAGGAGTCCACTGGGGGCTCATTTCGGCCCCACCGACAGCACCCAGCCCTTTTCTGTT  
 CAGTGAGACCACTGCCATGAAGTGCAGGAGCCCGGCTGCCCTTACACTGAATGTGCAGCACAAACGGA  
 TTTTGTGAACGTTGCCACAACGCCCGGCAACTTACGCCAGCCACGCCCCAGACCACACAAGGCACTTGG  
 ATCCCGGGAAGTGCCAAAGCTGCCTCCAGGATGTTACCAGGACATTTAATGGGATCTGCAGTACTTGCTT  
 CAAAAGGACTACAGCAGAGGCTCCTCCAGCCTCAGCACCAGCCTCCCTCCTTCTGTACCAGCGTTCC  
 AAGTCAGATCCCTCGCGGCTCGTCCGAGCCCCCTCCCGCATTCTTGCCACAGAGCTGGAACGACGCC  
 CTGCTGGCTGCCGTCTCAAGCTGCACGGACTCCTGGGACAGGACGGGGACGAGCAAGTGCAGAAAAGC  
 CGGCTGCGTGATTTTGGGACTCCAGAAAACAAGGGCTTTTGCACACTGTGTTTCATCGAGTACAGAGAA  
 AACAAACATTTTCTGCTGCCTCAGGAAAGTCACTCCACAGCGTCCAGGTTCCAGAACCATTCCGT  
 GCCTGGGAGGGAATGCGGCACCCTTGAAGCACCATGTTTGAAGGATACTGCCAGAAGTGTTCATTGA  
 AGCTCAGAATCAGAGATTTATGAGGCCAAAAGGACAGAAGAGCAACTGAGATCGAGCCAGCGCAGAGAT  
 GTGCCTCGAACACACAAAGCACCTCAAGGCCAAGTGCGCCGGGCTCCTGCAAGAACATCTGGCCT  
 GCCGCAGCGAGGAGCTCTGCATGGAGTGTGAGCATCCCAACCAGAGGATGGGCCCTGGGGCCACCAGGG  
 TGAGCCTGCCCCGAAGACCCCCCAAGCAGCGTTGCCGGCCCCCGCTGTGATCATTTTGGCAATGCC  
 AAGTGCAACGGCTACTGCAACGAATGCTTTCAGTTCAAGCAGATGTATGGC

**ACGCGTACGCGGCCGCTCGAG** – GFP Tag – GTTTAA

**Protein Sequence:**

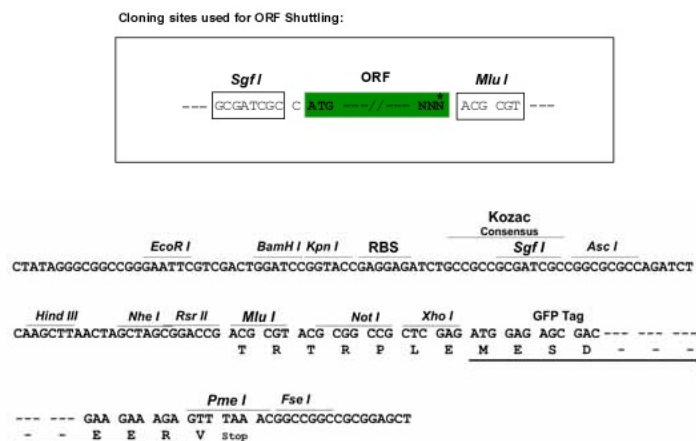
>RG221337 representing NM\_006290  
 Red=Cloning site Green=Tags(s)

MLRSLESGSNFAPLKVGGIYLPLHWP AQECYRPIV LGYD SHHFVPLVTLKDSGPEIRAVPLVNRDRGRF  
 EDLKVHFLTDPENEMKEKLLKEYLMVIEIPVQGDHGTTHLINA AKLDEANLPKEINLVDDYFELVQHEY  
 KKWQENSEQRRREGHAQNPMEPSVPLSLMDVKCETPNCPFFMSVNTQPLCHECSERRQKNQKLPKLS  
 KPGPEGLPGMALGASRGEAYEPLAWNPEESTGGPHSAPPTAPSPFLFSETTAMKCRSPGCPFTLNVQHNG  
 FCERCHNARQLHASHAPDHRHLDPGKCQACLQDVTRTFNGICSTCFKRTTAEASSSLSTSLPPSCHQRS  
 KSDPSRLVRSPSPHSCHRAGNDAPAGCLSQAARTPGDRTGTSKCRKAGCVYFGTPENKGFCTLCFIEYRE  
 NKHFAAASGKVSPTASRFQNTIPCLGRECGTLGSTMFEGYCQKCFIEAQNRQFHEAKRTEEQLRSSQRRD  
 VPRTTQSTSRPKCARASCKNILACRSEELCMECQHPNQRMGPGAHRGEPAPEDPPKQRCRAPACDHFNGA  
 KCNGYCNECFQFKQMYG

**TRTRPLE** – GFP Tag – V

**Restriction Sites:**

SgfI-MluI

**Cloning Scheme:**


**ACCN:** NM\_006290

**ORF Size:** 1731 bp

**OTI Disclaimer:** The molecular sequence of this clone aligns with the gene accession number as a point of reference only. However, individual transcript sequences of the same gene can differ through naturally occurring variations (e.g. polymorphisms), each with its own valid existence. This clone is substantially in agreement with the reference, but a complete review of all prevailing variants is recommended prior to use. [More info](#)

**OTI Annotation:** This clone was engineered to express the complete ORF with an expression tag. Expression varies depending on the nature of the gene.

**Components:** The ORF clone is ion-exchange column purified and shipped in a 2D barcoded Matrix tube containing 10ug of transfection-ready, dried plasmid DNA (reconstitute with 100 ul of water).

**Reconstitution Method:**

1. Centrifuge at 5,000xg for 5min.
2. Carefully open the tube and add 100ul of sterile water to dissolve the DNA.
3. Close the tube and incubate for 10 minutes at room temperature.
4. Briefly vortex the tube and then do a quick spin (less than 5000xg) to concentrate the liquid at the bottom.
5. Store the suspended plasmid at -20°C. The DNA is stable for at least one year from date of shipping when stored at -20°C.

**RefSeq:** [NM\\_006290.2](#), [NP\\_006281.1](#)

**RefSeq Size:** 4446 bp

**RefSeq ORF:** 2373 bp

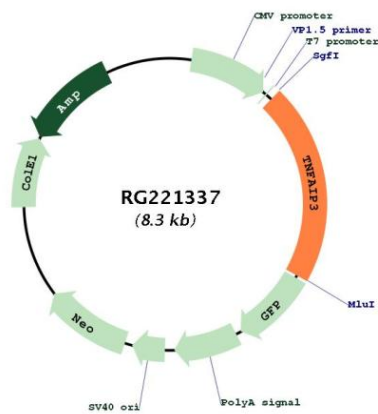
**Locus ID:** 7128

**UniProt ID:** [P21580](#)

**Cytogenetics:** 6q23.3

Domains:	zf-A20
Protein Families:	Druggable Genome
Protein Pathways:	NOD-like receptor signaling pathway
Gene Summary:	This gene was identified as a gene whose expression is rapidly induced by the tumor necrosis factor (TNF). The protein encoded by this gene is a zinc finger protein and ubiquitin-editing enzyme, and has been shown to inhibit NF-kappa B activation as well as TNF-mediated apoptosis. The encoded protein, which has both ubiquitin ligase and deubiquitinase activities, is involved in the cytokine-mediated immune and inflammatory responses. Several transcript variants encoding the same protein have been found for this gene. [provided by RefSeq, Jul 2012]

### Product images:



Circular map for RG221337