

Product datasheet for **RG221336**

GTDC1 (NM_001006636) Human Tagged ORF Clone

Product data:

Product Type:	Expression Plasmids
Product Name:	GTDC1 (NM_001006636) Human Tagged ORF Clone
Tag:	TurboGFP
Symbol:	GTDC1
Synonyms:	Hmat-Xa; mat-Xa
Mammalian Cell Selection:	Neomycin
Vector:	pCMV6-AC-GFP (PS100010)
E. coli Selection:	Ampicillin (100 ug/mL)



[View online »](#)

ORF Nucleotide Sequence:

>RG221336 representing NM_001006636
 Red=Cloning site Blue=ORF Green=Tags(s)

TTTTGTAATACGACTCACTATAGGGCGGCCGGAATTCGTCGACTGGATCCGGTACCGAGGAGATCTGCC
 GCC**CGGATCGCC**

ATGAGTATCCTCATCATTGAAGCATTCTATGGAGGCTCCCATAAACAGCTGGTGGATCTTCTTCAAGAAG
 AGTTAGGAGACTGTGTCGTTTATACCCCTCCTGCAAGAAATGGCATTGGAGAGCCCGGACATCTGCTTT
 ATATTTCTCTCAGACCATTCCCATCAGTGAGCATTACAGGACCCTCTTTGCAAGTTCAGTGCTTAACCTG
 ACCGAAGTGGCTGCCCTTCGGCCTGACCTTGGGAACTGAAAAAGATTCTGTATTTTACGAGAACCAGT
 TGATATATCCTGTCAAGAAATGTCAGGAGAGGGATTTCCAATATGGATACAACCAAATCTTTTCATGCC
 GGTGGCTGATGTGGTTGATTCAACTCAGTTTTTAATATGGAATCATTCTCACTTCCATGGAAAAATTT
 ATGAAGCTGATTCCTGATCACAGACCAAGGATCTGGAAAGCATCATCAGACCAAGTGCCAAGTTATTT
 ACTTTCCCATCAGGTTTCTGATGTGAGCAGATTCATGCCAAGCACAAAACAACCCATTTAAAGAAGAT
 GCTCGGCCTTAAAGGAAATGGCGGTGCGGTTCTGTCCATGGCCCTCCTTTTCAGCCAGAGCAGAGAGAT
 TCAGAGGATTTATTGAAGAATTTAATTCAGAGTGTGATACACACTGTGGCCTTGATACTGCACGACAAG
 AATATTTGGGTAACCTAATAAGACAGGAATCAGACTTGAAAAATCCACCTCGTCAGATAATTCAAGCTC
 TCATCATGGTGAAAAATAACAAATCTGACTGTTGATCCCTGTGACATTTTGGGTGGAGTTGATAATCAG
 CAAAGACTGCTACACATTGTCTGGCCTCACAGGTGGGAGCATGATAAAGATCCAGAAAGCTTTTTAAGG
 TATTAATGCATCTTAAAGACTTAGGACTCAATTTCCACGTGTCTGACTTGGAGAAACCTTACAGATGT
 CCCAGATATTTTTTTCAGAGGCCAAAAAGGCATTGGGATCTTCTGTCTTACACTGGGGCTACTTACCCAGC
 AAAGATGACTATTTCCAAGTACTGTGCATGGCTGATGTTGTGCATCTCAACAGCTAAGCATGAATCTTTG
 GAGTGGCAATGTTGGAAGCTGTGTACTGTGGGTGTACCACCTTTGTCCTAAAGATTTGGTTTATCCCGA
 AATATTTCCAGCTGAATATCTGTATTCTACACCTGAACAGCTTTCAAAAAGGCTCCAGAATTTCTGCAAG
 AGACCAGATATTATAAGAAAACATCTCTATAAGGGTGAATCGCTCCGTTTTTCTGGGCAGCCCTACATG
 GTAATTCAGGTCTCTGCTTACAACAGAACCTAGGGAAGATTTG

ACGCGTACGCGGCCGCTCGAG - GFP Tag - GTTTAA

Protein Sequence:

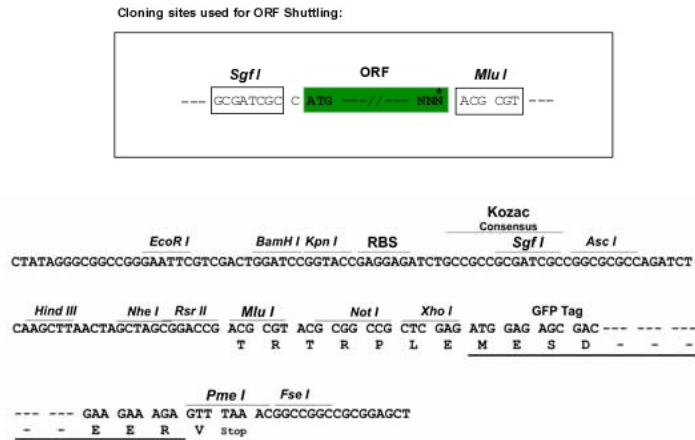
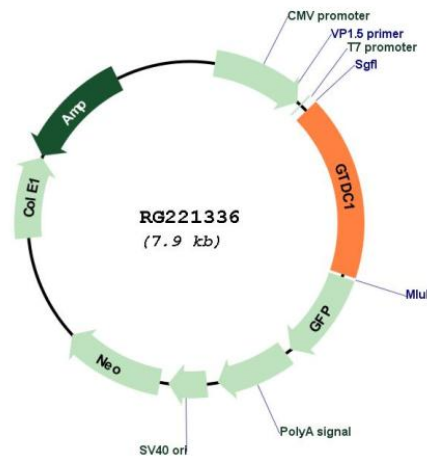
>RG221336 representing NM_001006636
 Red=Cloning site Green=Tags(s)

MSILIIIEAFYGGSHKQLVDLLQEELGDCVVYTLPAKKWHWRARTSALYFSQTIPISEHYRTLFASSVLNL
 TELAALRPDLGKLLKILYFHENQLIYPVKKQERDFQYGYNQILSCLVADVVFVNSVFNMESFLTSMGKF
 MKLIPDHRPKDLESIIRPKCQVIYFPIRFPDVSRFMPKHKTHLKKMLGLKNGGAVLSMALPFQPEQRD
 SEDLLKNFNSECDTHCGLDARQEYLGNSLRQESDLKKSTSSDNSSSHGKQNLTVDPDILGGVDNQ
 QRLLHIVPHRWEHDKDPESFFKVLMLKDLGLNFHVSVLGETFTDVPDIFSEAKKALGSSVLHWGYLPS
 KDDYFQVLCMADVVIISTAKHEFFGVAMLEAVYCGCYPLCPKDLVYPEIFPAEYLSTPEQLSKRLQNFCK
 RPDIIIRKHLKGEIAPFSWAALHGKFRSLLTTEPREDL

TRTRPLE - GFP Tag - V

Restriction Sites:

SgfI-MluI

Cloning Scheme:

Plasmid Map:


ACCN: NM_001006636

ORF Size: 1374 bp

OTI Disclaimer: The molecular sequence of this clone aligns with the gene accession number as a point of reference only. However, individual transcript sequences of the same gene can differ through naturally occurring variations (e.g. polymorphisms), each with its own valid existence. This clone is substantially in agreement with the reference, but a complete review of all prevailing variants is recommended prior to use. [More info](#)

OTI Annotation: This clone was engineered to express the complete ORF with an expression tag. Expression varies depending on the nature of the gene.

Components:	The ORF clone is ion-exchange column purified and shipped in a 2D barcoded Matrix tube containing 10ug of transfection-ready, dried plasmid DNA (reconstitute with 100 ul of water).
Reconstitution Method:	<ol style="list-style-type: none">1. Centrifuge at 5,000xg for 5min.2. Carefully open the tube and add 100ul of sterile water to dissolve the DNA.3. Close the tube and incubate for 10 minutes at room temperature.4. Briefly vortex the tube and then do a quick spin (less than 5000xg) to concentrate the liquid at the bottom.5. Store the suspended plasmid at -20°C. The DNA is stable for at least one year from date of shipping when stored at -20°C.
RefSeq:	<u>NM_001006636.5</u>
RefSeq Size:	2692 bp
RefSeq ORF:	1377 bp
Locus ID:	79712
UniProt ID:	<u>Q4AE62</u>
Cytogenetics:	2q22.3