

Product datasheet for **RG221333**

Tuberin (TSC2) (NM_001077183) Human Tagged ORF Clone

Product data:

Product Type:	Expression Plasmids
Product Name:	Tuberin (TSC2) (NM_001077183) Human Tagged ORF Clone
Tag:	TurboGFP
Symbol:	TSC2
Synonyms:	LAM; PPP1R160; TSC4
Mammalian Cell Selection:	Neomycin
Vector:	pCMV6-AC-GFP (PS100010)
E. coli Selection:	Ampicillin (100 ug/mL)
ORF Nucleotide Sequence:	>RG221333 representing NM_001077183 Red=Cloning site Blue=ORF Green=Tags(s)

CTATAGGGCGCCGGAATTTCGTGACTGGATCCGGTACCGAGGAGATCTGCC
GCC**CGATCGCC**

ATGGCCAAACCAACAAGCAAAGATTCAGGCTTGAAGGAGAAGTTAAGATTCTGTTGGGACTGGGAACAC
CGAGGCCAAATCCAGGTCTGCAGAGGGTAAACAGACGGAGTTTATCATCACCGCGAAATACTGAGAGA
ACTGAGCATGGAATGTGGCTCAACAATCGCATCCGGATGATAGGGCAGATTTGTGAAGTCGAAAAACC
AAGAAATTTGAAGAGCACGCAGTGAAGCACTCTGGAAGGCGGTGCGGATCTGTTGCAGCCGGAGCGGC
CGCTGGAGGCCCGCACGCGGTGCTGGCTCTGCTGAAGGCCATCGTGCAGGGGCAGGGCAGCGTTTGGG
GGTCTCAGAGCCCTCTTCTTAAAGTCAAGGATTACCTTCCAACGAAGACCTTACGAAAGGCTG
GAGTTTTCAAGGCCCTCACAGACAATGGAGACACATCACCTACTTGGAGGAAGAGCTGGCTGACTTTG
TCCTGCAGTGGATGGATGTTGGCTTGTCCCTCGAATTCCTTCTGGTGTGGTGAACCTGGTCAAATCAA
TAGCTGTTACCTCGACGAGTACATCGCAAGGATGGTTCAGATGATCTGTCTGCTGTGCGTCCGGACCGCG
TCCTCTGTGGACATAGAGGTCTCCCTGCAGGTGCTGGACGCCGTGGTCTGCTACAACCTGCCGCGCTG
AGAGCCTCCCGTGTTCATCGTTACCCTCTGTGCGACCATCAACGTCGAAGGAGCTCTGCGAGCCTTGCTG
GAAGCTGATGCGGAACCTCCTTGGCACCCACCTGGGCCACAGCGCCATCTACAACATGTGCCACCTCATG
GAGGACAGAGCCTACATGGAGGACGCGCCCTGCTGAGAGGAGCCGTGTTTTTGTGGCATGGCTCTCT
GGGAGCCACCGGCTCTATTCTCTCAGGAACTCGCCGACATCTGTGTTGCCATCATTTTACCAGGCCAT
GGCATGTCCGAACGAGGTGGTGTCTATGAGATCGTCCCTGTCCATCACAGGCTCATCAAGAAGTATAGG
AAGGAGCTCCAGGTGGTGGCGTGGGACATTCTGCTGAACATCATCGAACGGCTCCTTACGAGCTCCAGA
CCTTGGACAGCCCGGAGCTCAGGACCATCGTCCATGACCTGTTGACCACGGTGGAGGAGCTGTGTGACCA
GAACGAGTTCCACGGGTCTCAGGAGAGATACTTTGAACTGGTGGAGAGATGTGCGGACCAGAGGCCTGAG
TCCTCCCTCTGAACCTGATCTCTATAGAGCGCAGTCCATCCACCCGGCCAAGGACGGCTGGATTGAG
ACCTGCAGGCGCTGATGGAGAGATTCTCAGGAGCGAGTCCCAGGCGCCGTGCGCATCAAGGTGCTGGA
CGTGTCTCTTTGTGCTGCTCATCAACAGGCAGTTCTATGAGGAGGAGCTGATTAACCTAGTGGTTCATC



[View online »](#)

TGCAGCTCTCCACATCCCCGAGGATAAAGACCACCAGGTCCGAAAGCTGGCCACCCAGTTGCTGGTGG
ACCTGGCAGAGGGCTGCCACACACACCCTTCAACAGCCTGCTGGACATCATCGAGAAGGTGATGGCCCCG
CTCCCTCTCCCCACCCCGGAGCTGGAAGAAAGGGATGTGGCCGCACTCGGCCCTCTTGAGGATGTG
AAGACAGCCGCTCTGGGGCTTCTGGTATCCTTACAGCAAGCTGTACACCCTGCCTGCAAGCCACGCCA
CGCGTGTGATGAGATGCTGGTCAGCCACATTCAGCTCCACTACAAGCACAGCTACACCCTGCCAATCGC
GAGCAGCATCCGGCTGCAGGCCCTTGACTTCTGTGTGCTGCTGCGGGCCGACTCACTGCACCCGCTGGGC
CTGCCCAACAAGGATGGAGTCGTGCGGTTACAGCCCTACTGCGTCTGCGACTACATGGAGCCAGAGAG
GCTCTGAGAAGAAGACCAGCGGCCCTTTCTCCCTCCACAGGGCTCCTGGCCCGGCCTGCAGGCC
CGCCGTGCGGCTGGGGTCCGTGCCCTACTCCCTGCTCTTCCGCGTCTGCTGCAAGTGTGTTGAAGCAGGAG
TCTGACTGGAAGGTGCTGAAGCTGGTCTGGCAGGCTGCCTGAGTCCCTGCGCTATAAAGTGTCTATCT
TTACTTCCCTTGCAGTGTGGACCAGCTGTGCTCTGCTCTGCTCCATGCTTTTCAAGCCAAAGACT
GGAGCGGCTCCGAGGCGCCCAAGGCTTCTCCAGAAGTACTGACCTGGCCGTGGTCCAGTGTG
ACAGCATTAACTCTTACCATAACTACCTGGACAAAACCAACAGCGGAGATGGTCTACTGCTGGAGC
AGGGCCTCATCCACCGCTGTGCCAGCCAGTGGTCTGCGCTTGTCCATCTGCAGCGTGGAGATGCCTGA
CATCATCAAGCGCTGCCTGTTCTGGTGGTGAAGCTCAGGCACATCTCAGCCACAGCCAGCATGGCC
GTCCACTGCTGGAGTCTCTGCTCACTCTGGCCAGGCTGCCGCACCTCTACAGGAACTTTGCCCGGAGC
AGTATGCCAGTGTGTTCCGCATCTCCCTGCCGTACACCAACCCCTCCAAGTTAATCAGTACATCGTGTG
TCTGGCCCATCACGTATAGCCATGTGGTTCATCAGGTGCCGCTGCCCTTCCGGAAGGATTTTGTCCCT
TTCATCACTAAGGGCTGCGGTCCAATGTCTCTTGTCTTTGATGACACCCCGAGAAGGACAGCTTCA
GGGCCCCGAGTACTAGTCTCAACGAGAGACCAAGAGGATACAGACGTCCTCACCAGTGCCAGCTTGGG
GTCTGCAGATGAGAACTCCGTGGCCAGGCTGACGATAGCCTGAAAACTCCACCTGGAGCTCACGGAA
ACCTGTCTGGACATGATGGCTCGATACGCTTCTCCAACCTCACGGCTGTCCCGAAGAGGTTCTCTGTGG
CGGAGTTCCTCTAGCGGTGGCAGGACAAAACCTGGCTGGTTGGGAACAAGCTTGTCACTGTGACGAC
AAGCGTGGGAACCGGGACCCGGTCTACTAGGCCTGGACTCGGGGGAGCTGCAGTCCGGCCCGGAGTCTG
AGCTCCAGCCCCGGGTGCATGTGAGACAGACCAAGGAGGCGCCGGCAAGCTGGAGTCCCAGGCTGGGC
AGCAGGTGTCCCGTGGGGCCGGGATCGGGTCCGTTCATGTGCGGGGGCCATGGTCTTCGAGTTGGCGC
CCTGGAGCTGCCGGCTCCAGTTCCTGGGAGTGCCTTCTCCAGGACCAGGACTGCACCAGCCGCG
AAACCTGAGAAGGCTCAGTGGCACCCGGTCTCTGTGAGGAGAAGACGAACCTGGCGGCTATGTGC
CCCTGCTGACCCAGGCTGGGCGGAGATCTGGTCCGGAGGCCACAGGGAACACCAGTGGCTGATGAG
CCTGGAGAACCCGCTCAGCCCTTCTCCTCGGACATCAACAACATGCCCTGCAGGAGCTGTCTAACGCC
CTCATGGCGGCTGAGCGTTCAAGGAGCACCGGACACAGCCCTGTACAAGTCACTGTGCGTGGCCGAC
CCAGCACGGCCAAACCCCTCCTCTGCCTCGCTCCAACACAGACTCCGCGTGGTATGGAGGAGGGAA
TCCGGGCGAGGTTCTGTGCTGGTGGAGCCCCAGGGTTGGAGGACGTTGAGGCAGCGCTAGGCATGGAC
AGGCGCACGGATGCCTACAGCAGGTCGTCTCAGTCTCCAGCCAGGAGGAGAAGTCGCTCCACGCGGAGG
AGCTGGTTGGCAGGGGATCCCCATCGAGCGAGTCGTCTCCTCGGAGGGTGGCCGGCCCTCTGTGGACCT
CTCCTTCCAGCCCTCGCAGCCCTGAGCAAGTCCAGTCTCTCCGAGCTGCAGACTCTGCAGGACATC
CTCGGGGACCTGGGACAAGGCCGACGTGGGCCGGCTGAGCCCTGAGGTTAAGGCCCGGTACAGTCAG
GGACCTGGACGGGAAAGTGTGCTGGTGGTCCGCTCGGGCAAGACAGTCCGGGCCAGCCCGAGGGTCC
CTTGCCTTCCAGCTCCCCCGCTCGCCAGTGGCCTCCGGCCCGAGGTTACACCATCTCCGACTCGGCC
CCATCACGCAAGGCAAGAGAGTAGAGAGGGACGCTTAAAGAGCAGAGCCACAGCCTCCAATGCAGAGA
AAGTGCCAGGCATCAACCCAGTTTCGTGTTCTGCAAGTCTACCATCCCCCTTCTTGGCGACGAGTC
AAACAAGCCAATCCTGCTGCCAATGAGTCACAGTCTTTGAGCGGTCGGTGCAGCTCTCGACCAGATC
CCATCATACGACACCCACAAGATCGCCGTCCTGTATGTTGGAGAAGGCCAGAGCAACAGCGAGCTCGCCA
TCCTGTCCAATGAGCATGGCTCTACAGGTACACGGAGTCTGACGGGCTGGGCCGGCTCATCGAGCT
GAAGGACTGCCAGCCGACAAGGTGTACCTGGGAGGCTGGACGTGTGTTGGTGGAGACGGCCAGTTCACC
TACTGCTGGCACGATGACATCATGCAAGCGTCTTCCACATCGCCACCCTGATGCCACCAAGGACGTGG
ACAAGCACCGCTGCGACAAGAAGCGCCACCTGGGCAACGACTTTGTGTCATTGTCTACAATGACTCCGG
TGAGGACTTCAAGCTTGGCACCATCAAGGGCCAGTTCAACTTTGTCCACGTGATGTCACCCCGCTGGAC
TACGAGTGCAACCTGGTGTCCCTGCAAGTGCAGGAAAGACATGGAGGGCCTTGTGGACACCAGCGTGGCCA
AGATCGTGTCTGACCGCAACCTGCCCTTCTGGGCCCGCCAGATGGCCCTGCACGCAAAATATGGCCTCACA
GGTGATCATAGCCGCTCCAACCCACCGATATCTACCCCTCCAAGTGGATTGCCCGGCTCCGCCACATC
AAGCGCTCCGCCAGCGGATCTGCGAGGAAGCCGCTACTCCAACCCAGCCTACCTCTGGTGCACCCTC

CGTCCCATAGCAAAGCCCCTGCACAGACTCCAGCCGAGCCCACACCTGGCTATGAGGTGGGCCAGCGGAA
CGCCTCATCTCCTCGTGGAGGACTTCACCGAGTTTGTG

CTCGAG - GFP Tag - GTTTAA

Protein Sequence:

>RG221333 representing NM_001077183
Red=Cloning site Green=Tags(s)

MAKPTSKDSGLKEKFKILLGLGTPRPNPRAEGKQTEFIITAEILRELSMECGLNNRIRMIGQICEVAKT
KKFEEHAVEALWKAVADLLQPERPLEARHAVLALLKAIVQGQGERLGVLRALFFKVIKDYPSNEDLHERL
EVFKALTDNGRHITYLEEELADFVLQWMDVGLSSEFLLVLVNLVNFNSCYLDEYIARMVQMICLLCVRTA
SSVDIEVSLQVLDAVVCYNCLPAESLPLFIVTLCRTINVKELCEPCWKLNRNLLGTHLGHSAIYNMCHLM
EDRAYMEDAPLLRGAVFFVGMALWGAHRLYSLRNSPTSVLPSFYQAMACPNEVVSYEIVLSITRLIKKYR
KELQVVAWDILLNIIERLLQQLQTLDSPELRTIVHDLLTTVEELCDQNEFHGSQERYFELVERCADQRPE
SSLLNLSYRAQSIHPAKDGWIQNLQALMERFFRSESRGAVRIKVLVDLVSFVLLINRQFYEEELINSVVI
SQLSHIPEDKDHQVRKLATQLLVDLAEGCHTHHFNSLLDIIIEKVMARSLSPPELEERDVAAYSASLEDV
KTAVLGLLVILQTKLYTLPASHATRVYEMLVSHIQLHYKHSYTLPIASSIRLQAFDFLLLRADSLHRLG
LPNKDGVVRFSPYCVCDYMEPERGSEKKTSGPLSPPTGPPGAPAGPAVRLGSPVYSLFRVLLQCLKQE
SDWKVLKLVLRPELRYKVLIFTSPCSVDQLCSALCSMLSGPKTLERLRGAPEGFSRTDLHLAVVPVL
TALISYHNYLDTKQREMVCLEQGLIHRCASQCVALSICSVEMPDIIKALPVLVVKLTHISATASMA
VPLLEFLSTLARLPHLYRNFAAEQYASVFAISLPTYNPSKFNQYIVCLAHHVIAWWFIRCRLPFRKDFVP
FITKGLRSNVLVLFDDTPEKDSFRARSTSLNERPKRIQTSLTSASLGSADENSVAQADDSLKNLHLEL TE
TCLDMMARYVFSNFTAVPKRSPVGEFLLAGGRKTLWLVGNKLVTVTT SVGTGTRSLLGLDSGELQSGPES
SSSPGVHVRQTKEAPAKLESQAGQQVSRGARDVRSMSSGGHGLRVGALDVPASQFLGSATSPGPRTAPAA
KPEKASAGTRVPVQEKTNLAAYVPLL TQGWAEILVRRPTGNTSWLMSLENPLSPFSSDINMPLQEL SNA
LMAAERFKEHRDTALYKSLSVPAASTAKPPPLPRSNNTDSAVVMEEGSPGEVPVLVEPPGLEDVEAALGMD
RRTDAYSRSSSVSSQEEKSLHAEELVGRGIPIERVVSSEGGRRPSVDL SFQPSQPLSKSSSSPELQTLQDI
LGDPGDKADVGRLSPEVKARSQSGTLDGESAAWSASGEDSRGQPEGPLPSSSPRSPSGLRPRGYTISDSA
PSRRGKRVERDALKSRATASNAEKVPGINPSFVFLQLYHSPFFGDESNKPILLPNEQSQSFERSVQLLDQI
PSYDTHKIAVL YVGEQQNSSELAILSNEHGSYRYTEFLTGLGRLIELKDCQDPKVVYLGGLDVCGEDGQFT
YCWHDIMQAVFHIAATLMPTKDVDKHRCDKRRHLGNDFVSVIYNDSGEDFKLGTIKGQFNFVHVIVTPLD
YECNLVSLQCRKMEGLVDTSVAKIVSDRNLPFVARQMALHANMASQVHHSRNPNTDIYPSKWIARLRHI
KRLRQRICEEAAYSNSPLPLVHPPSHSKAPAQTPAEP TPGYEVGQRKRLISSVEDFTEFV

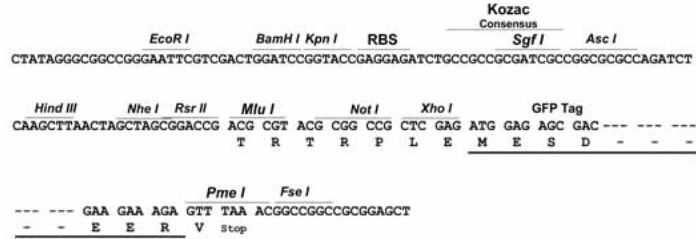
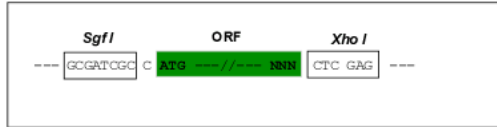
LE - GFP Tag - V

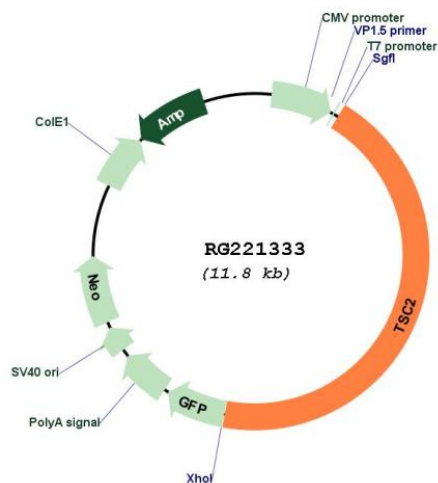
Restriction Sites:

SgfI-XhoI

Cloning Scheme:

Cloning sites used for ORF Shuttling:



Plasmid Map:


ACCN: NM_001077183

ORF Size: 5220 bp

OTI Disclaimer: The molecular sequence of this clone aligns with the gene accession number as a point of reference only. However, individual transcript sequences of the same gene can differ through naturally occurring variations (e.g. polymorphisms), each with its own valid existence. This clone is substantially in agreement with the reference, but a complete review of all prevailing variants is recommended prior to use. [More info](#)

OTI Annotation: This clone was engineered to express the complete ORF with an expression tag. Expression varies depending on the nature of the gene.

Components: The ORF clone is ion-exchange column purified and shipped in a 2D barcoded Matrix tube containing 10ug of transfection-ready, dried plasmid DNA (reconstitute with 100 ul of water).

Reconstitution Method:

1. Centrifuge at 5,000xg for 5min.
2. Carefully open the tube and add 100ul of sterile water to dissolve the DNA.
3. Close the tube and incubate for 10 minutes at room temperature.
4. Briefly vortex the tube and then do a quick spin (less than 5000xg) to concentrate the liquid at the bottom.
5. Store the suspended plasmid at -20°C. The DNA is stable for at least one year from date of shipping when stored at -20°C.

RefSeq: [NM_001077183.2](#)

RefSeq Size: 5474 bp

RefSeq ORF: 5223 bp

Locus ID: 7249

UniProt ID: [P49815](#)

Cytogenetics: 16p13.3

Protein Families:	Druggable Genome
Protein Pathways:	Insulin signaling pathway, mTOR signaling pathway, p53 signaling pathway
Gene Summary:	Mutations in this gene lead to tuberous sclerosis complex. Its gene product is believed to be a tumor suppressor and is able to stimulate specific GTPases. The protein associates with hamartin in a cytosolic complex, possibly acting as a chaperone for hamartin. Alternative splicing results in multiple transcript variants encoding different isoforms. [provided by RefSeq, Jul 2008]