

## Product datasheet for **RG221305**

### FER1L6 (NM\_001039112) Human Tagged ORF Clone

#### Product data:

Product Type:	Expression Plasmids
Product Name:	FER1L6 (NM_001039112) Human Tagged ORF Clone
Tag:	TurboGFP
Symbol:	FER1L6
Synonyms:	C8ORFK23
Mammalian Cell Selection:	Neomycin
Vector:	pCMV6-AC-GFP (PS100010)
E. coli Selection:	Ampicillin (100 ug/mL)
ORF Nucleotide Sequence:	>RG221305 representing NM_001039112 Red=Cloning site Blue=ORF Green=Tags(s)

TTTTGTAATACGACTCACTATAGGGCGGCCGGAATTCGTCGACTGGATCCGGTACCGAGGAGATCTGCC  
GCC**CGATCGC**C

ATGTTGGGCTGAAGGTGAAGAAGAAGAGAAATAAGGCAGAGAAGGGTTAATCCTAGCCAACAAGGCTG  
CGAAAGATAGTCAAGGTGACACTGAAGCACTGCAGGAGGAGCCTTCTCACCAGGAAGGACCGAGAGGAGA  
TTTGGTCCATGATGATGCTTCTATCTTTCTGTCCCTCAGTCTTCCAAAGAGAAGATCAAACCTATTG  
ACTAAGATCCATGATGGGAGGTCAGATCCAAAATTATCAAATTGCCATAACCATCACCGAGGCTCGCC  
AGCTGGTGGGTGAGAACATTGACCCAGTTGTGACCATTGAGATTGGGGATGAGAAGAAGCAAAGCACAGT  
GAAGGAAGGAACCAACAGCCATTTTATAATGAATACTTTGTCTTCGACTTCATTGGGCCCAAGTGCAT  
CTTTTTGACAAGATCATCAAATCTCCGCTTTTACCACAAGCTGATAGGAAGTGTACTGATTGGCTCTT  
TCAAAGTAGACCTGGGGACCGTGTACAACCAACCTGGTCACTAGTTCTGCAACAAGTGGGCCCTGCTCAC  
AGACCCTGGTGACATCAGGACTGGCACCAGGGGTACCTGAAATGTGACATCAGTGTGATGGGAAAAGGT  
GATGCTTGAAGACCAGCCCTAAAATTCTGACACCGAGGAGCCAATAGAAAAGAACCTTTTATCCCA  
AATGAATCAAGCATCATGGCGAACGTCACCAAGGCATTTGTGGTGACAGTAAGGACCTGGTGGATCCC  
TTTGTGGAGGTCCTTTGTGGCAGATGGGGCGAACCAAGTGCAGAAGAAGTGTGATCCTGTGT  
GGCATGAACAGGTGATCTTCAAGGAAATGTTCCCTCCCTTGTGTGCGAGGGTGAATAATCCAGGTGTGGGA  
TGAAGGCAGCATGAATGACGTAGCCCTGGCAACCATTTTATTGACCTGAAGAAAATCTCCAACGAACAG  
GATGGAGACAAAGGCTTTCTGCCACCTTTGGGCTGCCTGGATTAACCTGTATGGCTCGCCAGGAAC  
ACAGTCTGATGGATGACTACCAGGAAAATGAACGAAGGCTTTGGGAAGGTGTGTCATTACGGGGCAGAAT  
CTTGGTAGAAAATTGCTGTGAAAATCCTCTCAGGACGGGCACAGGAATCTAAATTTTCCAAGGCCCTGAAG  
GAGCTCAAGTTGCCTTCCAAGGACAAAGACTCAAATCTTCAAAGGTAAAGACAAGGCTGACAAAACCTG  
AAGATGAAAAATCCCAACAGGCTTCAAACAAAATAACTCAACCGAGGTGGAGGTGGAATCGTTCGATGT  
CCCCCGGAGATTGTACCAGAAAAAATGAGGAATTTTACTCTTTGGAGCATTTTTTGAAGCTACCATG



[View online »](#)

ATTGACCGGAAGATTGGAGATAAACCCATCAGCTTTGAAGTTTCTATTGGTAATTTTGGAAACCTGATTG  
 ATGGAGGATCCCATTATGGGAGTAAGAAGTCAGCTGAATCAGCTGAAGAAGACCTCCTTCCACTGCTTCA  
 CGAAGGGCAAGGGGATGTGGCCATGATGTTCCCATTCCTATGGCCTCCACCCTCACCCTGGAGAAGCCA  
 CTGGTGACAGAAGGGAACAGGAATTACAACATTTGCCATTTGAGGCTAAGAAGCCCTGTGTCTATTTCA  
 TCAGCTCTTGGGAGACCAGACCTTCAGGCTGCACTGGTCCAACATGCTGGAGAAAATGGCAGACTTCT  
 GGAAGAAAAGTATAGAAGAAGTGAGAGAATTGATCAAGATTTACAGGAGGCACCTGAAGAGAAAAAGAAA  
 ACAGTGCCTCAGTGACTTTCATCAGTCGGAGCAGTGCCTTTATCTCTGAAGCAGAAAAAAGCCCAAGATGT  
 TGAACCAAACCACTTTAGATAAGAAGCGACTTACGCTCTGCTGGCAGGAGCTGGAAGCAATGTGCAAGGA  
 GGCCAAGGGGATCATTCAGCAGCAGAAGAAAAAGTTATCTGTTGATGAAATGATTCACGAAGCCAAAAAC  
 TTTGTGAAAAAATCCGCTTTCTGTTGATGAGCCCCAGCACACTATCCCTGACGTTTTCTGTTGATGATG  
 TCAGCAACAACAGGAGAGTGGCCTATGCCCGCATCGCCTCAAAGACCTCCTCTATTTCCCTGTGCGGGG  
 GCAGATGGGCAAACTGCGGCAAGATCAAACCTCACTTCTCAAACCTCCTGGGAAACGACCGGCTGGT  
 TGGTCTGTGCAAGCAAAGTCGACGTGTACCTGTGGCTGGCTCCATCAAGCATGCCAGTGCCATTTTGG  
 ACAACTTGCCAGTAGGCTATGAAGCAGAAATGTCTCAAAGGGGCTGGCACCAATCACCCCATCTAA  
 CCTGCTCTACCAAGAACAGCATGTTTTTTCAGCTGAGGGCTCACATGTACCAAGCCGGGGCTCATCGCA  
 GCTGACAGCAATGGACTTTCAGACCCCTTTTGCCAAAGTACGTTCTTTTCACTGCCAGACAACAAAGA  
 TAATCTCCAGACCCCTCTCCGACCTGGAACCAGATGCTGCTGTTCAATGATTTGGTGTGTCATGGAGA  
 TGTGAAGGAGCTGGCAGAGTCCCGCCCTTAGTGGTGGTGGAGCTGTATGACAGCGACGCTGTGGGGAAG  
 CCAGAATATTTGGGTGCCACAGTGGCTGCTCCTGTTGTGAAGCTGGCTGACCAGGACTATGAGCCCCCA  
 GGTTATGCTATCACCCCATCTTTTGTGGGAATCTCTCTGGAGGGGATCTCCTTGCTGATTTTGAAGTGT  
 GCAGGTTCTCCTTCTGGGCTGCAAGGCTCCACCCGTTGAGCCACCAGACATCACCCAGATCTACCCG  
 GTTCTGCCAACATTCGCGCGGTGCTGAGCAAAATACCGAGTGGAGGTTCTCTTCTGGGAGTTTCGGGAAA  
 TGAAGAAGGTGCAGTCTCTCTGTGGATCGCCCTCAGGCTCTCATTGAGTGGGAGACAAGGTGTGAA  
 GTCTGCGTGATCCAGAGCTACAAGAACAACCCGAACCTTACGATCCAGGAGACGCTTTTGAAGTGGAA  
 CTGCTGAGAACGAGCTTCTGCACCCGCCACTGAGCATCTGCGTGGTGGACTGGAGAGCTTTTGGGAGGA  
 GTACCCTGTGGGCACCTACACCATCAACTACTTGAAGCAGTTTTTGTGTAACCTCAGAGAGCCCTTGC  
 CCCCATCACACAGGTGGATGGAACCCAGCCTGGGCACGATATTTTCAGATTCGCTAACAGCCACTGAGTCC  
 TCTGGAGCCACAGTCTCCTCCAGGATCCCCAGCAGATCACATTTATGTGGATGTTGAGCCACCTCCCA  
 CAGTGGTGCCGACTCTGCCAGGCCAGCCGGCCATCCTGGTTGACGTCCTGACTCATCCCCGATGCT  
 GGAGCCTGAACACACACCTGTAGCCAGGAGCCACAAAAGATGGAACCTAAGGATCCCAGGAAGCCT  
 TCCCGGAGGTCCACTAAGAGGAGAAAGAGGACCATAGCAGATGAATCTGCTGAAAACGTGATTGACTGGT  
 GGTCTAAGTATTATGCTCCCTGAAGAAAGCCAGAAAGGCAAAGGAGAGAAATCCCAAGGAAAAAAGG  
 CAATACAGAGGCAAAGCCAGATGAGGTAGTGGTAGATATAGAAGATGGGCCAAAGAAAGAAAGACAAA  
 ATGCTCAAGAAGAAACCCAAAGATGATGGAATCCCAACCTGGCCATCTTGACAGATATATGACGGTGATC  
 TCGAGAGTGAATTAACAATTTTGAAGACTGGGTGAAAACCTTTTGGAGCTTTCAGAGGCAAGTCTACGG  
 AGATGACCATGGTCTTGTAGGAGACNAGTCATAGGAAAAATTAAGGGCTCCTTCTGCATCTACAAAAGC  
 CCCCAGGATTCAGCTCTGAGGACAGCGGCAGCTGAGAATCCAGCAAGGGATCCGCCCCAATCACCCCTG  
 TCACAGTGTGATCAGAGTATACATTGTGCGGGCATTAACTTCTAGTCCAGCTGATCCAGATGGCAATC  
 AGATCCCTACATTGTGATCAAGCTTGGCAAGACAGAAATCAAAGACCCGGGATAAATACATCCCTAAACAA  
 CTGAACCCAGTATTTGGAAGGTCAATTTGAGATCCAAGCCACATTTCCAAAAGAGTCCCTGCTCTCCATCC  
 TGATCTATGACCATGACATGATTGGCACAGATGACCTTATTGGTGGAGCAAGATCGACCTGGAGAACCG  
 CTTCTACAGCAAACACCGAGCCATCTGTGGCTTGCAGAGCCAGTATGAGATAGAAGGATACAATGCCTGG  
 AGAGACACGTCCAAACCCACCGAAATCCTCACTAAGCTCTGCAAAGACAACAAGCTGGATGGACCCTACT  
 TTCACCTGGGAAAAACAGATAGGAAACCAAGTCTTTTCTGAAAAACTATCTTCACTGAAGAGGACAC  
 TGATGAGACAGTGGAGTCTTATGAACACCTGGCCCTCAAGGTTTTACTCTTGGGAGGATATCCAGAA  
 GTTGGGTGTAGGCTGTTCTGTAACACATAGAAACTCGGCCACTGTACCACAAGGATAAGCCAGGAATGG  
 AGCAGGGCCGCTGCAGATGTGGGTGGACATGTTCCCAAGGATATGCCTCAACCTGGACCTCCTGTTGA  
 CATCTCTCAAGGCGACCCAAAGGATACGAATTGAGAGTGACCATCTGGAACACTGAAGATGTCATTTTA  
 GAGGATGAGAATATCTTACAGGCCAAAAATCAAGTGATATTTATGTGAAAGGGTGGTTAAAGGGCTTGG  
 AGGATGACAAGCAGGAGACAGATGTGCATTACAACCTCCTGACTGGAGAGGGCAACTTCAACTGGCGCTT  
 CCTGTTTCCCTTTCAGTATCTCCAGCTGAGAAGCAAAATGGTCATTACCAAGAGGGAGAACATCTTCTCT  
 TTAGAGAAGATGGAGTGAAGACTCCTGCTGTGTTGGTGTGTCAGGTTTGGGATTTTGAAGGCTGTCTCT

CAGATGACTTCCTGGGCACCCTGGAAATGAACCTCAACAGTTTCCTCGAGCAGCTAAGTCTGCCAAAGC  
 CTGTGATCTTGCCAAGTTTAAAAATGCAAGTGAGGAGACCAAGATCTCTATATTCCAGCAAAAACGTGTG  
 CGTGGCTGGTGGCCTTTTTCTAAAAGCAAAGAAGCTCACAGGCAAGGTTGAAGCTGAGTTCACCTAGTTA  
 CAGCAGAAGAAGCTGAGAAAAATCTGTGGAAAAAGCCGAAAGGAGCCAGAGCCCTGGCCAAGCCCAA  
 CCGCCCAGACACCTCCTTTTCGTGGTTCATGAGCCCTTAAGTGCCTGTACTACCTCATCTGGAAGAAT  
 TACAAAAAGTACATCATCATTGCTTTTATTCTCATCATCTCATCTCTCTCTCGTCTTTTCATCTACA  
 CCTTGCCAGGAGCCATCAGCCGAAGGATCGTTGTGGGCTCA

ACGCGTACGCGGCCGCTCGAG – GFP Tag – GTTTAA

**Protein Sequence:**

>RG221305 representing NM\_001039112  
 Red=Cloning site Green=Tags(s)

MFGLKVKKKRNKAIEKGLILANKAAKDSQGDTEALQEESHQEGPRGDLVHDDASIFPVSPASPKRRSKLL  
 TKIHDGEVRSQNYQIAITITEARQLVGENIDPVVTIEIGDEKKQSTVKEGTNSPFYNEYFVDFIGPQVH  
 LFDKIIKISVFFHKLIGSVLIGSFVLDLGTVYNQPGHQFCNKWALLTDPGDIRTGKYLKCDISVMGKG  
 DVLKTSPTKSDTEEPIEKNLLIPNGFPLERPWARFYVRLYKAEGLPKMNSSIMANVTKAFVGDSDLVDP  
 FVEVSFAGQMGRITVQKNCADPVVHEQVIFKEMFPPLCRRVKIQVWDEGSMNDVALATHFIDLKKSNEQ  
 DGDGKFLPTFGPAWNL YGSPRNHSLMDDYQEMNEGFEGVSRFRILVEIAVEILSGRAQESKFSKALK  
 ELKLPKDKDKSSKGGKADKTEDGKSQAASNKTNSTEVEVESFDVPEIIVPEKNEEFLFGAFFEATM  
 IDRKIGDKPISFEVSIGNFGNLIDGGSHYGSKSAESAEDLLPLLHEGQGDVAHDVPIPMASHTHPEK  
 LVTEGNRNYNYLPFEAKKPCVYFISWGDQTFRLHWSNMLEKMAFLLEESIEEVRELIKISQEAPEEKMK  
 TVLSDFISRSSAFISEAEKPKMLNQTLDKRLTLCWQLEAMCKEAKGIIQQQKKLSVDEMIHEAQN  
 FVEKIRFLVDEPQHTIPDVFIWMLSNRRVAYARIASKDLLYSPVAGQMGKHCYKIKTHFLKPPGKRPAG  
 WSVQAKVDVYLWLSIKHASAILDNLPGVYEAEMSSKAGTNNHPPSNLLYQEQHVFLRAHMYQARGLIA  
 ADSNGLSDPFAKVTFLSHCQTTKIIISQTLSPWNQMLLFNDLVHGDVKELAESPLVVVELYDSAVGK  
 PEYLGATVAAPVVKLADQYEPRLCYHPIFCGNL SGGDLLAVFELLQVPPSGLQGLPPVEPPDITQIYP  
 VPANIRPVL SKYRVEVLFWGVREMKVQLL SVDRPQALIECGGQGVKSCVIQSYKNNPNFSIQADAFEVE  
 LPENELLHPPLSICVVDWRAFGRSTLVGTYYINYLKQFLCKLREPLAPITQVDGTQPGHDISDSL TATES  
 SGAHSSSQDPPADHIYDVEPPPPTVVPDQAQAQPAILVDVDPDSSPMLPEHTPVAQEPKDGKPKDPRKP  
 SRRSTKRRKRTIADESAENVIDWWSKYASLKKAKAKERNPKGKKGNTAKPDEVVVDIEDGPKKKKDK  
 MLKKPKDDGIPNLAILQIYDGDLESEFNFDWVWKTFFELFRGKSTEDDHGLDGDVIGKFKGSFCIYKS  
 PQDSSSEDSGQLRIQQGIPPVPTVLRVYIVAAFNLSPADPDGKSDPYIVIKLGKTEIKDRDKYIPKQ  
 LNPVFGRSFEIQATFPKESLLSILYDHDMIGTDDLIGETKIDLENRFYSKHRAICGLQSQYIEGYNAW  
 RDTSKPTEILTKLCKDNKLDGPYFHPGKIQIGNQVFSGKTIFTEEDTDETVESYEHLLKVLHSHWEDIPE  
 VGCRLVPEHIETRPL YHKDKPGMEQGRQLQMWVDMFPKMPQPGPPVDISPRRPGYELRVTIWNTEDEVIL  
 EDENIFGTQKSSDIYVKGWLKGLEDDKQETDVHYNLSL TGEGNFNWRFLFPFQYLP AEKQMVITKRENIFS  
 LEKMECKTPAVLVLQVWDFERLSSDDFLGTLEMNLSFPRAAKSAKACDLAKFENASEETKISIFQQKRV  
 RGWWPFSKSKELTGKVEAEFHLVTAEEAEKNPVGKARKEPEPLAKPNRPDTSFSWFMSPFKLYLIWKN  
 YKYYIIIFILIIILIFLVLFYITLPGAISRRIIVVGS

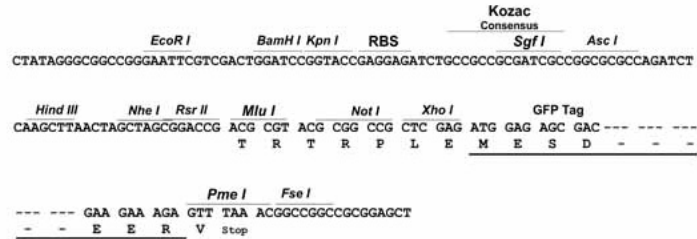
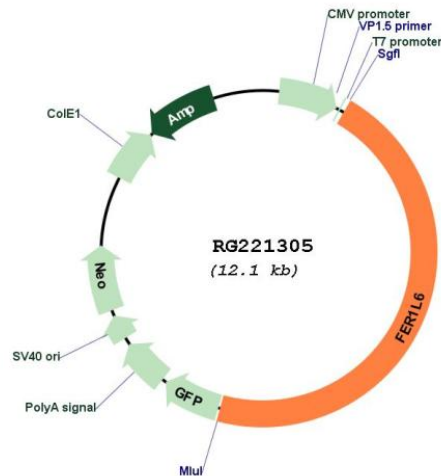
TRTRPLE – GFP Tag – V

**Restriction Sites:**

Sgfl-Mlul

**Cloning Scheme:**

Cloning sites used for ORF Shutting:


**Plasmid Map:**


ACCN: NM\_001039112

ORF Size: 5571 bp

<b>OTI Disclaimer:</b>	The molecular sequence of this clone aligns with the gene accession number as a point of reference only. However, individual transcript sequences of the same gene can differ through naturally occurring variations (e.g. polymorphisms), each with its own valid existence. This clone is substantially in agreement with the reference, but a complete review of all prevailing variants is recommended prior to use. <a href="#">More info</a>
<b>OTI Annotation:</b>	This clone was engineered to express the complete ORF with an expression tag. Expression varies depending on the nature of the gene.
<b>Components:</b>	The ORF clone is ion-exchange column purified and shipped in a 2D barcoded Matrix tube containing 10ug of transfection-ready, dried plasmid DNA (reconstitute with 100 ul of water).
<b>Reconstitution Method:</b>	<ol style="list-style-type: none"><li>1. Centrifuge at 5,000xg for 5min.</li><li>2. Carefully open the tube and add 100ul of sterile water to dissolve the DNA.</li><li>3. Close the tube and incubate for 10 minutes at room temperature.</li><li>4. Briefly vortex the tube and then do a quick spin (less than 5000xg) to concentrate the liquid at the bottom.</li><li>5. Store the suspended plasmid at -20°C. The DNA is stable for at least one year from date of shipping when stored at -20°C.</li></ol>
<b>RefSeq:</b>	<a href="#">NM_001039112.1</a> , <a href="#">NP_001034201.1</a>
<b>RefSeq Size:</b>	6058 bp
<b>RefSeq ORF:</b>	5574 bp
<b>Locus ID:</b>	654463
<b>UniProt ID:</b>	<a href="#">Q2WGI9</a>
<b>Cytogenetics:</b>	8q24.13
<b>Protein Families:</b>	Transmembrane