

Product datasheet for **RG221303**

Progesterone Receptor (PGR) (NM_000926) Human Tagged ORF Clone

Product data:

Product Type:	Expression Plasmids
Product Name:	Progesterone Receptor (PGR) (NM_000926) Human Tagged ORF Clone
Tag:	TurboGFP
Symbol:	Progesterone Receptor
Synonyms:	NR3C3; PR
Mammalian Cell Selection:	Neomycin
Vector:	pCMV6-AC-GFP (PS100010)
E. coli Selection:	Ampicillin (100 ug/mL)



[View online »](#)

ORF Nucleotide Sequence:

>RG221303 representing NM_000926.

Blue=ORF Red=Cloning site Green=Tag(s)

```

GCTCGTTTAGTGAACCGTCAGAATTTTGTAAACGACTCACTATAGGGCGGCCGGGAATTCGTGACTG
GATCCGGTACCGAGGAGATCTGCCGCCCGCATCGCC
ATGACTGAGCTGAAGGCAAAGGGTCCCCGGGCTCCCCACGTGGCGGGCGGCCCCCTCCCCGAGGTC
GGATCCCCACTGCTGTGTCCGCCAGCCAGGTCGGTCCGTTCCGGGGAGCCAGACCTCGGACACCTTGCCC
GAAGTTTCGGCCATACCTATCTCCCTGGACGGGCTACTTCCCTCGGCCCTGCCAGGGACAGGACCCC
TCCGACGAAAAGACGCAGGACCAGCAGTCGCTGTGCGACGTGGAGGGCGCATATTCAGAGCTGAAGCT
ACAAGGGGTGCTGGAGGCAGCAGTTCTAGTCCCCAGAAAAGGACAGCGGACTGCTGGACAGTGTCTTG
GACACTCTGTTGGCGCCCTCAGGTCCCGGGCAGAGCCAACCCAGCCCTCCCGCTGCGAGGTCACCAGC
TCTTGGTGCTGTTTGGCCCCGAACCTCCCGAAGATCCACCGGCTGCCCCGCCACCCAGCGGTGTTG
TCCCCGCTCATGAGCCGGTCCGGGTGCAAGGTTGGAGACAGCTCCGGGACGGCAGCTGCCATAAAGTG
CTGCCCGGGGCTGTCACCAGCCCGGCAGCTGCTGCTCCCGGCTCTGAGAGCCCTCACTGGTCCGGG
GCCCAGTGAAGCCGTCTCCGCAGGCCGTGCGGTGGAGGTTGAGAGGAGGATGGCTCTGAGTCCGAG
GAGTCTCGGGTCCGCTTCTGAAGGGCAAACCTCGGGCTCTGGGTGGCGGGCGGCTGGAGGAGGAGCC
GCGGCTGTCCCGCGGGGGCGGACAGGAGGCGTCGCCCTGGTCCCAAGGAAGATTCCCGCTTCTCA
GCGCCAGGGTCGCCCTGGTGGAGCAGGACGCGCCGATGGCGCCCGGGCGCTCCCGCTGGCCACCAG
GTGATGGATTTTACACCGTGCCTATCTGCTCTCAATCACGCCTTATTGGCAGCCCGCACTCGGCAG
CTGCTGGAAGACGAAAGTTACGACGGCGGGGGCGGGGCTGCCAGCGCCTTTGCCCGCCGCGGAGTTCA
CCCTGTGCCTCGTCCACCCCGGTGCTGTAGGCGACTTCCCCGACTGCGCGTACCCGCCGACGCGGAG
CCCAAGGACGACGCGTACCCTCTCTATAGCGACTTCCAGCCCGCGCTCTAAAGATAAAGGAGGAGGAG
GAAGGTGCGGAGGCCCTCCGCGCGTCCCCGCTTCTACCTTGTGGCGGTGCCAACCCCGCAGCCTTC
CCGGATTTCCCGTTGGGGCCACCCCGCTGCGCGCGGAGCGACCCATCCAGACCCGGGGAAGCG
GCGGTGACGCGCCACCCGCCAGTGCCTCAGTCTCGTCTGCGTCTCCTCGGGTTCGACCCTGGAGTGC
ATCCTGTACAAGCGGAGGGCGCGCCCGCCAGCAGGGCCGTTGCGCGCCCGCCCTGCAAGGCGCCG
GGCGGAGCGGCTGCCTGCTCCCGGGGACGGCTGCCCTCCACCTCCGCTCTGCCCGCCCGCCGGG
GCGGCCCGCGCTTACCCTGCACTCGGCTCAACGGGCTCCCGCAGCTCGGCTACCAGCCCGCGTG
CTCAAGGAGGGCTGCCGAGGCTACCCGCCCTATCTCAACTACCTGAGGCCGATTGAGAAGCCAGC
CAGAGCCACAATACAGTTCGAGTCATTACCTCAGAAGATTTGTTAATCTGTGGGATGAAGCATCA
GGCTGTCAATTATGGTGCCTTACCTGTGGGAGCTGAAGGCTTCTTTAAGAGGGCAATGGAAGGGCAG
CACAACACTTATGTGCTGGAAGAAATGACTGCATCGTTGATAAAATCCGCAGAAAAAAGTCCAGCA
TGTGCGCTTAGAAAGTGCTGTCAGGCTGGCATGGTCTTGGAGGTCGAAAATTTAAAAAGTTCAATAAA
GTCAGAGTTGTGAGAGCACTGGATGCTGTTGCTCTCCACAGCCAGTGGGCGTTCAAAATGAAAGCCAA
GCCCTAAGCCAGAGATCACTTTTTACCAGGTCAAGACATACAGTTGATTCACCACCTGATCAACCTG
TTAATGAGCATTGAACCAGATGTGATCTATGCAGGACATGACAACAAAAACCTGACACCTCCAGTTCT
TTGCTGACAAGTCTTAATCAACTAGCGGAGAGGCAACTTCTTTCAGTAGTCAAGTGGTCTAAATCATTG
CCAGTTTTTCGAACTTACATATTGATGACCAGATAACTCTCATTCAAGTATTCTGGATGAGCTTAATG
GTGTTGGTCTAGGATGGAGATCCTACAACACGTCAGTGGGAGATGCTGATTTTGCACCTGATCTA
ATACTAAATGAACAGCGGATGAAAGAATCATATTCTATTATTGCTTACCATGTGGCAGATCCCA
CAGGAGTTTGTCAAGCTTCAAGTTAGCCAAGAAGATTCTCTGTATGAAAGTATTGTTACTTCTTAAT
ACAATTCCTTTGGAAGGGCTACGAAGTCAAACCCAGTTTGGAGAGATGAGGTCAAGCTACATTAGAGAG
CTCATCAAGGCAATTGGTTTGGGCAAAAAGGAGTTGTGTCGAGCTCACAGGTTTCTATCAACTTACA
AAACTTCTTGATAACTTGCATGATCTTGTCAAACAACCTCATCTGACTGCTGAATACATTTATCCAG
TCCCGGGCACTGAGTGTGAATTTCCAGAAATGATGTCTGAAGTATTGCTGCACAATTACCCAAGATA
TTGGCAGGGATGGTGAACCCCTTCTCTTTCATAAAAAAG
ACCGGGCCGCTCGAG - GFP Tag - GTTAAAC
    
```

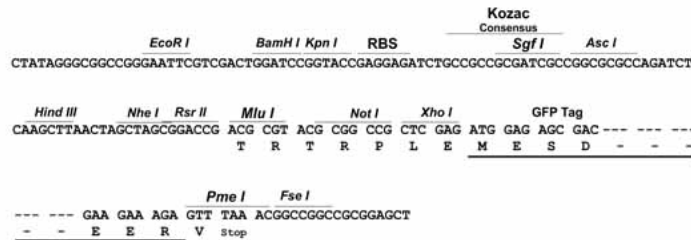
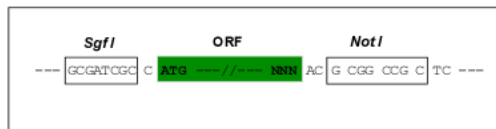
Protein Sequence: >Peptide sequence encoded by RG221303
 Blue=ORF Red=Cloning site Green=Tag(s)

MTELKAKGPRAPHVAGGPPSPEVGSPLLCRPAAGPFPGSQTSDTLPEVSAIPISLDGLLFPRPCQGQDP
 SDEKTQDQQLSDVEGAYSRAEATRGAGGSSSSPPEKDSGLLDSVLDLTLAPSGPQSQSPSPACEVTS
 SWLFLGPELPEDPPAAPATQTVLSPMSRSGCKVGDSSGTAHAKVLPRLSPARQLLLPASEPHWSG
 APVKPSPQAAAIVEEEDGSESEESAGPLLKPKPRALGGAAAGGAAAAPPAAAGGVALVPKEDSRFS
 APRVALVEQDAPMAPGRSPLATTVMDFIHVPILPLNHALLAARTRQLLEDESVDGGAASAFAAPRPS
 PCASSTPVAVGDFPDCAYPDAEPKDDAYPLYSDFQPPALKIKEEEEGAEASARSPRSYL VAGANPAAF
 PDFPLGPPPLPPRATPSRPGAAVTAAPASASVSSASSSGSTLECILYKAEGAPPQQGPFAPPPCKAP
 GASGCLLPRDGLPSTASAAAAGAAPALYPALGLNGLPQLGYQAAVLKEGLPQVYPPYLNLYRPDSEAS
 QSPQYSFESLPQKICLICGDEASGCHYGVLTCGCKVFFKRAMEGQHNYLCAGRNDICVDKIRRNCPA
 CRLRKCCQAGMVLGGRKFKKFNKVRVVRALDAVALPQVGVPNESQALSQRFTTFSPGQDIQLIPPLINL
 LMSIEPDVIYAGHDNTKPDTSLSLLTSLNQLGERQLL SVVKWSKSLPGFRNLHIDDQITLIQYSWMSLM
 VFGLGWRSYKHVSGQMLYFAPDLILNEQRMKESFYSLCLTMWQIPQEFVKLQVSQEEFLCMKVL LLLN
 TIPLEGLRSQTQFEEMRSSYIRELIKAIGLRQKGVVSSQRFYQLTKLLDNLHDLVKQLHLYCLNTFIQ
 SRALSVEFPEMMSEVIAAQLPKILAGMKPLLFHKK
 TRPLEMESDESGLPAMEIECRITGTLNGVEFELVGGEGTPEQGRMTNKMKSTKGALTFSPYLLSHVMG
 YGFYHFGTYPSGYENPFLHAINNGGYTNTRIEKYEDGGVLVHVSFSYRYEAGRVIGDFKVMGTGFPEDSV
 IFTDKIIRSNATVEHLHPMGDNDLDGSFTRTFSLRDGGYSSVVDSHMHFKSAIHPSILQNGGPMFAFR
 RVEEDHSNTELGIVEYQHAFKTPDADAGEERV

Restriction Sites: SgfI-NotI

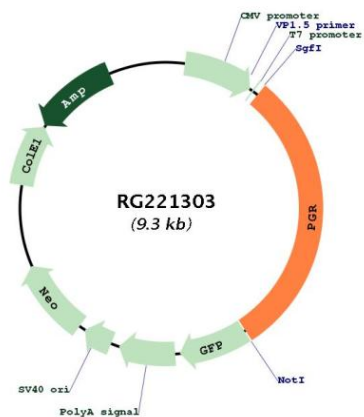
Cloning Scheme:

Cloning sites used for ORF Shuttling:



ACCN:	NM_000926
ORF Size:	2799 bp
OTI Disclaimer:	The molecular sequence of this clone aligns with the gene accession number as a point of reference only. However, individual transcript sequences of the same gene can differ through naturally occurring variations (e.g. polymorphisms), each with its own valid existence. This clone is substantially in agreement with the reference, but a complete review of all prevailing variants is recommended prior to use. More info
OTI Annotation:	This clone was engineered to express the complete ORF with an expression tag. Expression varies depending on the nature of the gene.
Components:	The ORF clone is ion-exchange column purified and shipped in a 2D barcoded Matrix tube containing 10ug of transfection-ready, dried plasmid DNA (reconstitute with 100 ul of water).
Reconstitution Method:	<ol style="list-style-type: none">1. Centrifuge at 5,000xg for 5min.2. Carefully open the tube and add 100ul of sterile water to dissolve the DNA.3. Close the tube and incubate for 10 minutes at room temperature.4. Briefly vortex the tube and then do a quick spin (less than 5000xg) to concentrate the liquid at the bottom.5. Store the suspended plasmid at -20°C. The DNA is stable for at least one year from date of shipping when stored at -20°C.
RefSeq Size:	5003 bp
RefSeq ORF:	2802 bp
Locus ID:	5241
UniProt ID:	P06401
Cytogenetics:	11q22.1
Protein Families:	Druggable Genome, Nuclear Hormone Receptor, Transcription Factors
Protein Pathways:	Oocyte meiosis, Progesterone-mediated oocyte maturation
MW:	99 kDa
Gene Summary:	This gene encodes a member of the steroid receptor superfamily. The encoded protein mediates the physiological effects of progesterone, which plays a central role in reproductive events associated with the establishment and maintenance of pregnancy. This gene uses two distinct promoters and translation start sites in the first exon to produce several transcript variants, both protein coding and non-protein coding. Two of the isoforms (A and B) are identical except for an additional 165 amino acids found in the N-terminus of isoform B and mediate their own response genes and physiologic effects with little overlap. [provided by RefSeq, Sep 2015]

Product images:



Circular map for RG221303