

Product datasheet for **RG221274**

ZNF594 (NM_032530) Human Tagged ORF Clone

Product data:

Product Type:	Expression Plasmids
Product Name:	ZNF594 (NM_032530) Human Tagged ORF Clone
Tag:	TurboGFP
Symbol:	ZNF594
Mammalian Cell Selection:	Neomycin
Vector:	pCMV6-AC-GFP (PS100010)
E. coli Selection:	Ampicillin (100 ug/mL)



[View online »](#)

ORF Nucleotide Sequence:

>RG221274 ORF sequence, **codon optimized**.
Due to the complexity of NM_032530, the ORF clone is codon optimized for mammalian Expression.
The nucleotide sequence differs from the reference sequence, yet the amino acid sequence remains identical.

Red=Cloning site Blue=ORF Green=Tags(s)

TTTTGTAATACGACTCACTATAGGGCGCCGGGAATTCGTCTGACTGGATCCGGTACCGAGGAGATCTGCC
 GCC**CGGATCGCC**

ATGAAAGAATGGAATCTAAAATGGAGATCAGCGAAGAGAAGAAGTCCGCTAGGGCCGCCAGTGAAAAGC
 TCCAGCGGCAGATCACCCAAGAGTGTGAACCTCGTGGAGACTTCCAATCCGAAGATCGGCTGCTGAAGCA
 CTGGGTGAGCCCCTGAAGGACGCCATGCGGCACCTGCCATCCCAGGAAAGCGGTATCAGAGAGATGCAT
 ATAATTCCTCAGAAGGCCATCGTGGGTGAGATCGGCCACGGCTGTAATGAGGGTAAAAGATTCTTAGTG
 CCGGGGAAAGCTCCCACCGCTATGAAGTATCAGGTCAGAACTTCAAACAAAAGAGTGGGTTGACAGAGCA
 CCAGAAGATCCATAATATAAATAAAAACGTATGAGTGTAAGAGTGTGAAAAACCTTCAATCGATCTCC
 AACCTGATCATTATCAGCGGATCACACCGGGAACAAGCCATATGTCTGCAATGAATGCGGAAAGGACT
 CAAATCAGTCCTCAAACCTGATAATTCACCAGAGGATCCACACCGGCAAAAAACCTTATATTTGTCATGA
 GTGTGGCAAGGACTTCAATCAGTCATCTAATCTGGTGAGGCACAAACAGATCCATTCTGGAGGCAACCCA
 TACGAATGCAAAGAATGCGGTAAAGCATTCAAAGGATCATCAACCTTGTCTCCACCAGCGCATTCACT
 CACGGGAAAGCCCTACCTGTCAATAAATGTGGCAAAGCCTTTAGCCAGAGCACGGACCTATTATCCA
 TCATCGAATACACACCGGAGAAAAGCCTTATGAATGCTATGACTCGCGCCAAATGTTTTCCAATCTTCC
 CACTGGTTCCCCACCAACGCATACACACCGGGAGAAAACCCCTGAAGTGCAACGAATGTGAGAAGGCCCT
 TCAGACAGCATTCTCACCTCACAGAGCATCAGCGATTGCACAGCGGTGAGAAGCCCTATGAGTGCCATCG
 ATGTGGGAAGACTTTCTCTGGCCGACTGCCTTCTTAAACATCAGAGGTTGCATGCCGGTAAAAAATT
 GAAGAGTGCGAAAAGACGTTTTTCCAAAGATGAAGAACTGCGGGAGGAGCAGCGCATCCACCAGGAAGAGA
 AGGCATACTGGTGAACCAAGTGTGGTGGGAATTTCCAAGTACCAGTGATCTGATAAGGCACCAGGTGAC
 CCATACCGGTGAGAAGCCCTACGAATGCAAGGAGTGTGGGAAAACATTTAATCAGTCATCTGATCTTCTT
 CGGCACCATCGCATTATTCCGGAGAGAAGCCCTGTGTTTGTCCAAATGCGGAAAAAGCTTTCGGGCA
 GCAGCGACTTGATCAGGCATCACAGGTTGCACACAGGAGAGAAGCCGTATGAGTGCTCCGAATGCGGGAA
 GGCAATCAGCCAACGCAGCCATCTCGTGACCCACCAAGATTACACAGGCGAGAAAACCTACCAGTGT
 ACTGAGTGCGGTAAGCCCTCCGACGCCGTCCCTTCTTATTCAGCACCCCGCATTACACAGCGGTGAGA
 AGCCATATGAGTGTAAGAATGTGGTAACTGTTCAATTTGGCGCACCGCATTCTGAAGCACCAGAGCTT
 GCATACCGGTGAGAAGCTGGAGTGCAGAGAAGACATTTAGTCAGGACGAGGAGCTCAGAGGTGAGCAGAAA
 ATTCATCAAGAGGCAAAGGCTTACTGGTGAATCAGTGCGGGAGAGCCTTTCAGGGGAGCTCCGATCTGA
 TCCGACACCAGGTGACACACACCGGAGAAGCCCTACGAATGTAAGAGTGTGGCAAAACATTCACCA
 AAGTCATTACAGGGGAAGCAGTGATCTGATCAAACACCACCGCATTACATACAGGAGAAAAGCCATATGAGT
 GCAGTGAATGTGGGAAGGCATTTAGTCAGAGATCCCACCTGGCTACCCACCAAAAAATTCACACGGGCGA
 AAAGCCTTATCAGTGTTCTGAATGTGGCAATGCTTTCCGACGGGATCCCTGCTGATCCAGCATAGGAGG
 CTCCATTTCTGGAGAGAAGCCCTATGAGTGCAAAGAATGTGGGAACTGTTGATGTGGCACACAGCTTTTC
 TGAAGCACCAGCGCTCCACGCAGGAGAGAAGCTCGAAGAGTGTGAAAAACATTTTCTAAGACGAGGA
 ACTGCGGAAGGAGCAGCGGACCCACCAGGAAAAAAGGTGATTGGTGCAACCAATGCTCTCGCACATTC
 CAGGGGTCTTCTGACCTCATCAGGCATCAGGTGACTCATACCAGAGAGAAAACCTATGAGTGCAAGGAAT
 GTGGAAAGACTCAGAGTGAGCTGCGACCCTCCGAACTAGC

ACGCGTACGCGGCCGCTCGAG - GFP Tag - **GTTTAA**

Protein Sequence: >RG221274 representing NM_032530
 Red=Cloning site Green=Tags(s)

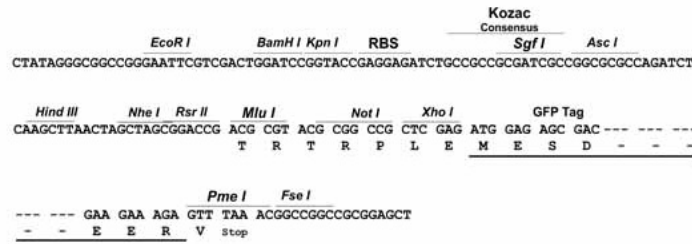
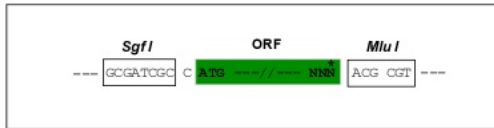
MKEWKSMEISEEKKSARAASEKLQRQITQECELVETSNSERDLLKHWVSPLKDAMRHLPSQESGIREMH
 IIPQKAI VGEIGHGCNEGEKILSAGESSHRYE VSGQNFQKQK SGLTEHQKIHNINKTYECKECEKTFNRSS
 NLI IHQRIHTGNKPYVCNECGKDSNQSSNLI IHQRIHTGKKPYICHECGKDFNQSSNLVRHKQIHSGGNP
 YECKEKGKAFKSSNLVLHQRIHSRGKPYLCNKCGKAFSQSTDLI IHQRIHTGEKPYECYDCGQMFSS
 HLVPHQRIHTGEKPLKCNCEKAFRQHSHTLHQRLHSGEKPYECHRCKGTFSGRTAFLKHQRLHAGEKI
 EECEKTF SKDEELREEQR IHQEEKAYWCNQCGRNFQGTSDLIRHQVTHTGEKPYECKEKGKTFNQSSDLL
 RHHRIHSGEKPCVCSKCGK SFRGSSDLIRHHRVHTGEKPYECSECGKAFSQRSHLVTHQKIHTGEKPYQC
 TECGKAFRRRSLLIQHRRHSGEKPYECKEKGKLF IWRTAFLKHQSLHTGEKLECEKTF SQDEELRGEQK
 IHQEKAYWCNQCGRAFQSSDLIRHQVTHTREKPYECKEKGKTFNQSSDLLRHHRIHSGEKPYVCNKCG
 KSFRGSSDLIKHHRHHTGEKPYECSECGKAFSQRSHLATHQKIHTGEKPYQCSECGNAFRRRSLLIQHRR
 LHSGEKPYECKEKGKLFMHTAFLKHQRLHAGEKLECEKTF SKDEELRKEQRTHQEKVYWCNQCSRTF
 QGSSDLIRHQVTHTREKPYECKEKGKTFQSELRPSETS

TRTRPLE - GFP Tag - V

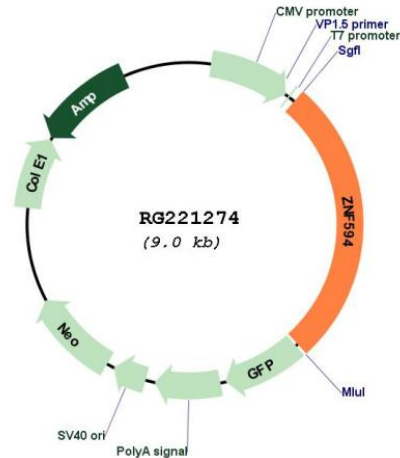
Restriction Sites: SgfI-MluI

Cloning Scheme:

Cloning sites used for ORF Shuttling:



Plasmid Map:



ACCN: NM_032530

ORF Size: 2421 bp

OTI Disclaimer: The molecular sequence of this clone aligns with the gene accession number as a point of reference only. However, individual transcript sequences of the same gene can differ through naturally occurring variations (e.g. polymorphisms), each with its own valid existence. This clone is substantially in agreement with the reference, but a complete review of all prevailing variants is recommended prior to use. [More info](#)

OTI Annotation: This clone was engineered to express the complete ORF with an expression tag. Expression varies depending on the nature of the gene.

Components: The ORF clone is ion-exchange column purified and shipped in a 2D barcoded Matrix tube containing 10ug of transfection-ready, dried plasmid DNA (reconstitute with 100 ul of water).

Reconstitution Method:

1. Centrifuge at 5,000xg for 5min.
2. Carefully open the tube and add 100ul of sterile water to dissolve the DNA.
3. Close the tube and incubate for 10 minutes at room temperature.
4. Briefly vortex the tube and then do a quick spin (less than 5000xg) to concentrate the liquid at the bottom.
5. Store the suspended plasmid at -20°C. The DNA is stable for at least one year from date of shipping when stored at -20°C.

RefSeq: [NM_032530.1](#), [NP_115919.1](#)

RefSeq Size: 4863 bp

RefSeq ORF: 2424 bp

Locus ID: 84622

UniProt ID: [Q96JF6](#)

Cytogenetics: 17p13.2

Gene Summary: May be involved in transcriptional regulation.[UniProtKB/Swiss-Prot Function]