

## Product datasheet for **RG221224**

### IFFO (IFFO1) (NM\_080730) Human Tagged ORF Clone

#### Product data:

Product Type:	Expression Plasmids
Product Name:	IFFO (IFFO1) (NM_080730) Human Tagged ORF Clone
Tag:	TurboGFP
Symbol:	IFFO1
Synonyms:	HOM-TES-103; IFFO
Mammalian Cell Selection:	Neomycin
Vector:	pCMV6-AC-GFP (PS100010)
E. coli Selection:	Ampicillin (100 ug/mL)



[View online »](#)

**ORF Nucleotide Sequence:**

>RG221224 representing NM\_080730  
 Red=Cloning site Blue=ORF Green=Tags(s)

TTTTGTAATACGACTCACTATAGGGCGGCCGGGAATTCGTCGACTGGATCCGGTACCGAGGAGATCTGCC  
 GCC**CGGATCGCC**

ATGAATCCGTTATTCGGCCCCAACCTCTTCTCTGCAGCAGGAGCAGCAGGGCCTGGCCGGCCACTGG  
 GGGACTACTGGAGGCGACCACTTCGCCGGGGAGGAGACTTGCCTCCGCGCCTCTCTCGCCGGCCGG  
 CCCTGCTGCCTACTCGCCGCCGGGGCGGGCCCGCCCGCTGCCGCCATGGCCCTCCGCAATGACCTG  
 GGCTCCAACATCAACGTCTCAAGACCCTGAACCTCCGTTCCGCTGCTTCTGGCCAAGGTGCATGAGC  
 TGGAGCGCCGAACCGGCTGTTGGAGAAGCACTGCAGCAAGCGCTGGAGGAGGGTAAGCAGGGCCGGCG  
 GGGCCTGGGTCTCGGACCAGGCAGTGCAGACCAGGCTTCTGCAGCCCCATCCGGCCCTGGGGCTGCAG  
 CTGGGCGCCCGCCGGCCGCTGTCTGCAGCCCTTCGGCGCGCTGCTGGGCTCGCCCGCGCTCCCGG  
 CCGGCCCTCGGCCCTCCGGCCAGCCTCTCGTCTCTCCACCTCCACCTCCACCACCTATTCCTC  
 GTCGGCCCGCTTTCATGCCCGCACCATCTGGTCTTCTCGCAGCCCGCCGGCTCGGGCCGGACTGGAG  
 CCCACTCTGGTGAAGGGCCTGGCTTGTCTGGGTGCACCCGGATGGGGTGGGCGTCCAGATCGACACCA  
 TCACGCCCAGATCCGCGCTCTCTACAACGTGCTGGCCAAAGTGAAGCGGGAGCGGGACGAGTACAAGCG  
 GAGGTGGGAAGAGGAGTACACGGTGCAGTCCAGCTGCAAGACCGTGAATGAGCTCCAGGAGGAAGCC  
 CAGGAGGCTGATGCCTGCCAGGAGGAGCTGGCACTGAAGTGAACAGTTGAAGGCTGAGCTGGTGGTCT  
 TCAAGGGGCTCATGAGTAAACCTGTCGGAGCTGGACACCAAGTCCAGGAGAAAGCCATGAAGGTGGA  
 TATGGACATCTGCCCGCCATCGACATCACCGCAAGCTCTCGATGTGGCTCAGCAGCGCAACTGCGAG  
 GACATGATCCAGATGTTCCAGTCCCATCCATGGGGGGCGGAAGCGGGAGCGCAAGGCTGCCGTCGAGG  
 AGGACCTCCCTGTCGGAGAGTGAGGGCCCGCCAGCCGATGGGGATGAGGAGGAGACACAGCCCT  
 CAGCATCAACGAGGAGATGCAGCGCATGCTCAACCAGCTGAGGGAGTATGATTTTGGAGCAGACTGTGAC  
 AGCCTGACTTGGGAGGAGACTGAGGAGACCCTGCTGCTTTGGGAGGATTTCTCAGGCTATGCCATGGCAG  
 CTGCAGAGGCCAGGAGAGCAGGAAGATAGCCTGGAGAAGGTGATTAAGATACGGAGTCCCTGTTCAA  
 AACCCGGGAGAAGGAGTATCAGGAGACCATTGACCAGATAGAGCTGGAGTTGGCCACGGCCAAGAACGAC  
 ATGAACCGGCACCTGCACGAGTACATGGAGATGTGCAGCATGAAGCGCGGCTGGACGTGCAGATGGAGA  
 CCTGCCCGGCTCATCACCCAGTCTGGAGACCGAAAGTCTCTGCTTTCAGTCCGGTCCCGCTTAGCGA  
 CCCGCCCGCCCAAGCGAGGCTGAGGACTCCGATCGCGATGTCTCATCTGACAGCTCCATGAGA

**ACGCGTACGCGGCCGCTCGAG** – GFP Tag – GTTTAA

**Protein Sequence:**

>RG221224 representing NM\_080730  
 Red=Cloning site Green=Tags(s)

MNPLFGPNLFLQQEQQLAGPLGDSLGGDHFAGGGDLPPAPLSPAGPAAYSPPGPGPAPPAAMALRNDL  
 GSNINVLKTLNLRFRCLAKVHELERRNRLLEKQLQQALEEGKQGRRLGRRDQAVQTFVSPIRPLGLQ  
 LGARPAAVCSPSARVLGSPARSPAGPLAPSAASLSSSSTSTSTTYSSARFMPGTIWSF SHARRLGPGL  
 PTLVQGPGLSWVHPDGVGVQIDITPEIRALYNVLAKVKRERDEYKRRWEEYTVRIQLQDRVNELQEEA  
 QEADACQEELALKVEQLKAEVVFVKGLMSNNLSELDTKIQEKAMKVDMDICRRIDITAKLCDVAQQRNCE  
 DMIQMFQVPSMGRKRERKAAVEEDTSLSESEGPRQPDGDEEESTALSINEEMQRMLNQLREYDFEDDCD  
 SLTWEETEETLLLWEDFSGYAMAAEAQGEQEDSLEKVIKDTESLFKTREKEYQETIDQIELELATAKND  
 MNRHLHEYMCMKRGLDVQMETCRRLITQSGDRKSPAFTAVPLSDPPPPPPSEAESDRDVSDDSSMR

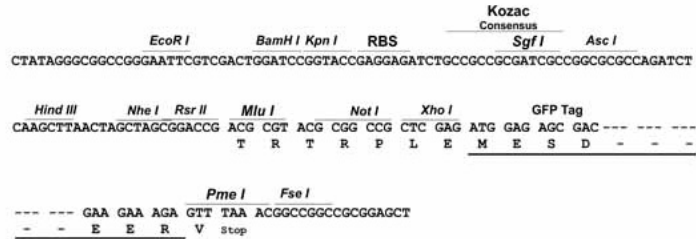
**TRTRPLE** – GFP Tag – V

**Restriction Sites:**

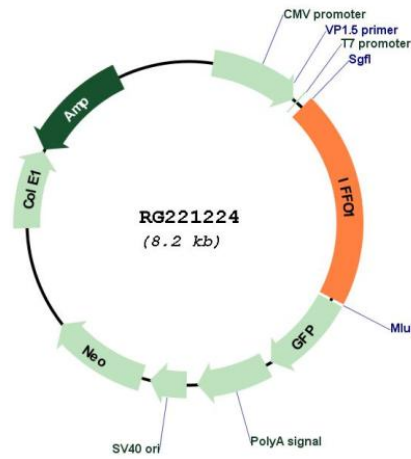
Sgfl-MluI

Cloning Scheme:

Cloning sites used for ORF Shutting:



Plasmid Map:



<b>ACCN:</b>	NM_080730
<b>ORF Size:</b>	1677 bp
<b>OTI Disclaimer:</b>	The molecular sequence of this clone aligns with the gene accession number as a point of reference only. However, individual transcript sequences of the same gene can differ through naturally occurring variations (e.g. polymorphisms), each with its own valid existence. This clone is substantially in agreement with the reference, but a complete review of all prevailing variants is recommended prior to use. <a href="#">More info</a>
<b>OTI Annotation:</b>	This clone was engineered to express the complete ORF with an expression tag. Expression varies depending on the nature of the gene.
<b>Components:</b>	The ORF clone is ion-exchange column purified and shipped in a 2D barcoded Matrix tube containing 10ug of transfection-ready, dried plasmid DNA (reconstitute with 100 ul of water).
<b>Reconstitution Method:</b>	<ol style="list-style-type: none"><li>1. Centrifuge at 5,000xg for 5min.</li><li>2. Carefully open the tube and add 100ul of sterile water to dissolve the DNA.</li><li>3. Close the tube and incubate for 10 minutes at room temperature.</li><li>4. Briefly vortex the tube and then do a quick spin (less than 5000xg) to concentrate the liquid at the bottom.</li><li>5. Store the suspended plasmid at -20°C. The DNA is stable for at least one year from date of shipping when stored at -20°C.</li></ol>
<b>RefSeq:</b>	<a href="#">NM_080730.3</a>
<b>RefSeq Size:</b>	2706 bp
<b>RefSeq ORF:</b>	1689 bp
<b>Locus ID:</b>	25900
<b>UniProt ID:</b>	<a href="#">Q0D2I5</a>
<b>Cytogenetics:</b>	12p13.31
<b>Domains:</b>	filament
<b>Protein Families:</b>	Druggable Genome
<b>Gene Summary:</b>	This gene is a member of the intermediate filament family. Intermediate filaments are proteins which are primordial components of the cytoskeleton and nuclear envelope. The proteins encoded by the members of this gene family are evolutionarily and structurally related but have limited sequence homology, with the exception of the central rod domain. Multiple alternatively spliced transcript variants encoding different isoforms have been found for this gene. [provided by RefSeq, Jul 2010]