

Product datasheet for **RG221183**

ABCA6 (NM_080284) Human Tagged ORF Clone

Product data:

Product Type: Expression Plasmids
Product Name: ABCA6 (NM_080284) Human Tagged ORF Clone
Tag: TurboGFP
Symbol: ABCA6
Synonyms: EST155051
Mammalian Cell Selection: Neomycin
Vector: pCMV6-AC-GFP (PS100010)
E. coli Selection: Ampicillin (100 ug/mL)
ORF Nucleotide Sequence: >RG221183 representing NM_080284
Red=Cloning site Blue=ORF Green=Tags(s)

TTTTGTAATACGACTCACTATAGGGCGGCCGGAATTCGTCGACTGGATCCGGTACCGAGGAGATCTGCC
GCC**CGATCGCC**

ATGAATATGAAACAGAAAAGCGTGTATCAGCAAACAAAGCACTTCTGTGCAAGAATTTCTTAAGAAAT
GGAGGATGAAAAGAGAGAGCTTATTGGAATGGGCCTCTCAATACTTCTAGGACTGTGTATTGCTCTGTT
TTCCAGTTCATGAGAAATGTCCAGTTTCTGGAATGGCTCCTCAGAATCTGGGAAGGTAGATAAATTT
AATAGCTCTTCTTAATGGTTGTGTATACCAATATCTAATTTAACCCAGCAGATAATGAATAAACAG
CACTTGCTCCTCTTTTGAAGGAACAAGTGTCTTGGGCACCAATAAACACACATGGACGAAACTACT
TCTGGAATAATTTACCATATGCTATGGGAATCATCTTTAATGAAACTTTCTCTTATAAGTTAATATTTTC
CAGGGATATAACAGTCCACTTTGGAAAGAAGATTTCTCAGCTCATTGCTGGGATGGATATGGTGAGTTTT
CATGTACATTGACCAAACTACTGGAATAGAGGATTTGTGGCTTTACAAACAGCTATTAATACTGCCATTAT
AGAAATCACAAACCAATCACCCCTGTGATGGAGGAGTTGATGTCACTACTGCTATAACTATGAAGACATTA
CCTTTCATAACTAAAAATCTTCTTACCAATGAGATGTTTATTTTATTCTTCTTGCCTTCTTTCTCCCCAC
TTGTATATTTTATCACTCAATGTAACAAAAGAGAGAAAAAGTCTAAGAATTTGATGAAAATGATGGG
TCTCCAAGATTCAGCATTCTGGCTCTCCTGGGGTCTAATCTATGCTGGCTTCATCTTTATTTATTTCCATA
TTCGTTACAATTATCATAACATTCACCCAAATTATAGTCATGACTGGCTTCATGGTCATATTTATACTCT
TTTTTTTATATGGCTTATCTTTGGTAGCTTTGGTGTTCCTGATGAGTGTGCTGTTAAAGAAAGCTGTCTCT
CACCAATTTGGTTGTGTTTCTCCTTACCCTCTTTTGGGGATGTCTGGGATTCACTGTATTTTATGAACAA
CTTCTTCATCTCTGGAGTGGATTTTGAATATTTGTAGCCCTTTTGCCTTACTACTGGAATGATTCAGA
TTATCAAACCTGGATTATAACTTGAATGGTGTAAATTTTCTGACCCTTCAGGAGACTCATATACAATGAT
AGCAACTTTTTCTATGTTGCTTTTGGATGGTCTCATCTACTTGTCTATTGGCATTACTTTTGACAAAATT
TTACCCTATGGAGATGAGCGCCATTATTCTCCTTATTTTCTTGAATTCATCATCTTGTTCACACACC
AAAGGACTAATGCTAAGGTTATTGAGAAAGAAATCGATGCTGAGCATCCCTCTGATGATTATTTTGAACC
AGTAGCTCCTGAATCCAAGGAAAAGAAGCCATCAGAATCAGAAATGTTAAGAAGGAATATAAAGGAAAA



[View online »](#)

TCTGAAAAGTGAAGCATTGAAAGCCTTGTCTTTGACATATATGAAGGTCAAATCACGGCAATCCTGG
 GTCACAGTGGAGCTGGCAAATCTTCACTGCTAAATATTCTTAATGGATTGTCTGTTCCAACAGAAGGATC
 AGTTACCATCTATAATAAAAATCTCTGAAATGCAAGACTTGGAGGAAATCAGAAAAGATAACTGGCGTC
 TGTCTCAATTCAATGTTCAATTTGACATACTCACCGTGAAGGAAAACCTCAGCCTGTTTGTAAAAATA
 AAGGGATTCACTAAAGGAAGTGAACAAGAGGTACAACGAATATTATTGGAATTGGACATGCAAAACAT
 TCAAGATAACCTTGCTAAACATTTAAGTGAAGGACAGAAAAGAAAGCTGACTTTTGGGATTACCATTTTA
 GGAGACTCTCAAATTTTGTCTTTTAGATGAACCACTACTGGATTGGATCCCTTTTCCAGAGATCAAGTGT
 GGAGCCTCTGAGAGAGCGTAGAGCAGATCATGTGATCCTTTTTCAGTACCCAGTCCATGGATGAGGCTGA
 CATCTGGCTGATAGAAAAGTGATCATGTCCAATGGGAGACTGAAGTGTGCAGGTTCTTCTATGTTTTTG
 AAAAGAAGGTGGGGTCTTGATATCACCTAAGTTTACATAGGAATGAAATATGTAACCCAGAAACAAATA
 CATCTTCACTACTCATCACATCCCGATGCTAAATTA AAAACAGAAAACAAAGAAAAGCTTGATATAC
 TTTGCCACTGGAAAGGACAAATACATTTCCAGATCTTTTTCAGTGTCTGGATAAGTGTCTGACCAGGGA
 GTGACAGGTTATGACATTTCCATGTCAACTCTAAATGAAGTCTTTATGAAACTGGAAGGACAGTCAACTA
 TCGAACAAGATTTGCAACAAGTGGAGATGATAAGAGACTCAGAAAGCCTCAATGAAATGGAGCTGGCTCA
 CTCTTCTCTCTGAAATGCAGACAGCTGTGAGTACATGGGCCCTGGAGAATGCAAGTCTTTGCCATG
 GCACGGCTCCGTTTCTTAAAGTTAAAACGTCAAACCTAAAGTGTTATTGACCTATTATTGGTATTGGAA
 TCGCAATATCCCTTTGATTGTTGAAAATAAATGTATGCTATGTTAAATGAAAAGATCGATTGGGAATT
 TAAAAACGAATGATTTTCTCTCTCTGGACAACCTCCCCAGGAACCCCGTACCAGCCTGTTGATCATC
 AATAACACAGAATCAAATATTGAAGATTTATAAAATCACTGAAGCATCAAAATATACTTTTGGAAAGTAG
 ATGACTTTGAAAACAGAAATGGTACTGATGGCCTCTACACAATGGAGCTATCATAGTTTCTGGTAAACA
 AAAGGATTATAGATTTTTCAGTTGTGTGTAATACCAAGAGATTGCACTGTTTTCCAATTCTTATGAATATT
 ATCAGCAATGGGCTACTTCAAATGTTTAAATCACACACAACATATTCGAATTGAGTCAAGCCCATTTCCCT
 TTAGCCACATAGGACTCTGGACTGGGTTGCCGGATGGTTCTTTTTTCTTATTTTTGGTGTATGATGATC
 TTCTCCTTATATACCATTGGGCAGCATCAGTGATTACAAGAAAATGCTAAGTCCAGCTATGGATTTCA
 GGCTCTACACTTCTGCTTACTGGTGTGGCAGGCACTAGTGGACGTGAGCTTCTTCAATTTAATTCTCC
 TTTAATGTATTTAATTTTCTACATAGAAAACATGCAGTACCTTCTTATTACAAGCCAAATTGTGTTTGC
 TTTGGTTATAGTTACTCTGGTTATGCAGCTTCTCTTGTCTTCTCATATATGATATCATTTATTTTT
 CGCAAAGGAGAAAAACAGTGGCCTTTGGTCATTTTACTTCTTTTTTGCCTCCACCATCATGTTTTCCA
 TCACTTTAATCAATCATTTTACCTAAGTATATTGATTACCACCATGGTATTGGTCTTTCATATACCTT
 GCTTGGATTTAAACTTTTTTGGAAAGTGAAGAGACCAGGAGCACTACAGAGAATTTCCAGAGGCCAAATTT
 GAATTGAGTGCCACTGATTTTCTAGTCTGCTTCATACCCTACTTTCAGACTTTGCTATTCGTTTTTGTTC
 TAAGATGCATGGAACATAAATGTGGAAAGAAAAGAAATGCGAAAAGATCCTGTTTTCAGAATTTCCCCCA
 AAGTAGAGATGCTAAGCCAAATCCAGAAGAACCATAGATGAAGATGAAGATTTCAAACAGAAAAGAAATA
 AGAACAGCCACTGCTCTGACCACCTCAATCTTAGATGAGAAAACCTGTTATAATTGCCAGCTGTCTACACA
 AAGAATATGCAGGCCAGAAAAGTTGCTTTTCAAAGAGGAAGAAGAAAATAGCAGCAAGAAAATATCTC
 TTTCTGTGTTCAAGAAGTGAAATTTTGGGATTGCTAGGACCCAAATGGTGTCTGAAAAAGTTCATCTATT
 AGAATGATATCTGGGATCACAAGCCAACCTGCTGGAGAGGTGGAACCTGAAAGGCTGCAGTTCAGTTTTGG
 GCCACCTGGGGTACTGCCCTCAAGAGAACGTGCTGTGGCCATGCTGACGTTGAGGGAACACCTGGAGGT
 GTATGCTGCCGTCAAGGGGCTCAGAAAAGCGGACGCGAGGCTGCCATCGCAAGATTAGTGAGTGCCTTTC
 AAAGTGCATGAGCAGCTGAATGTTCTGTGCAGAAATTAACAGCAGGAATCACGAGAAAAGTTGTGTTTTG
 TGCTGAGCCTCCTGGAAACTCACCTGTCTTGGCTCCTGGATGAACCATCTACGGGATAGACCCACAGG
 GCAGCAGCAATGTGGCAGGCAATCCAGGCAGTCGTTAAAAACACAGAGAGAGGTGCTCCTGACCACC
 CATAACCTGGCTGAGGCGGAAGCCTTGTGTGACCGTGTGGCCATCATGGTGTCTGGAAGGCTTAGATGCA
 TTGGCTCCATCCAACACCTGAAAAACAACTTGGCAAGGATTACATTCTAGAGCTAAAAGTGAAGGAAAC
 GTCTCAAGTGACTTTGGTCCACACTGAGATTCTGAAGCTTTTCCACAGGCTGCAGGGCAGGAAAGGTAT
 TCCTCTTTGTTAACCTATAAGCTGCCCCGTGGCAGACGTTTACCCTCTATCACAGACCTTTACAAAATTAG
 AAGCAGTGAAGCATAACTTTAACCTGGAAGAATACAGCCTTTCTCAGTGCACACTGGAGAAGGTATTCTT
 AGAGCTTTCTAAAGAACAGGAAGTAGGAAATTTTGTATGAAGAAATGATACAACAATGAGATGAAAACCT
 CTCCTCATTGATGAACCT

ACGCGTACGCGGCCGCTCGAG - GFP Tag - GTTTAA

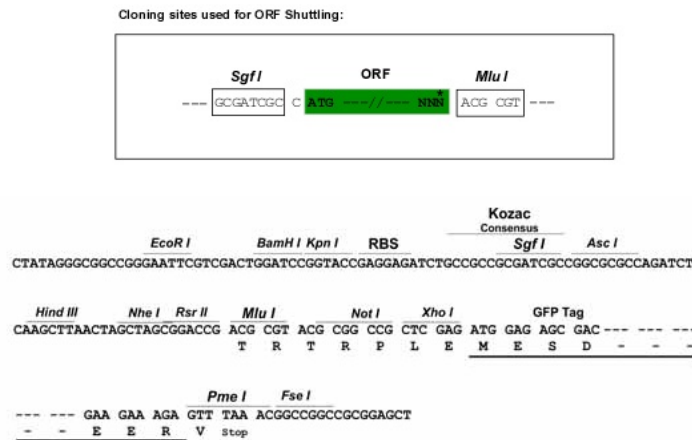
Protein Sequence: >RG221183 representing NM_080284
 Red=Cloning site Green=Tags(s)

MNMKQKSVYQQTALLCKNFLKKWRMKRESLLEWGLSILLGLCIALFSSSMRNVQFPGMAPQNLGRVDKF
 NSSSLMVVYTPISNL TQQIMNK TALAPLLKGT SVIGAPNK THMDEILLENLPYAMGIIFNETFSYKLIF
 QGYNSPLWKEDFSAHCWDGYGEFSCTLTKYWNRGFVALQTAINTAIEITTNHPVMEELMSVTAITMKT
 PFITKNLLHNEMFILFLLHF SPLVYFISLNVTKERKSKNLMKMMGLQDSAFWLSWGLIYAGFIFIISI
 FVTIIITFTQIIIVMTGFMVIFILFFLYGLSLVALVFLMSVLLKKAVLTNLVVFLTLFWGCLGFTVFEQ
 LPSSLEWILNICSPFAFTTGMIQIIKLDYNLNGVIFPDPSPGDSYTMIAATFSMLLLDGLIYLLALYFDKI
 LPYGDERHYSPLFFLNSSSCFQHQR TNAKVIEKEIDAEHP SDDYFEPVAPEFQGKEAIRIRNVKKEYK GK
 SGKVEALKGLLFDIYEQQITAILGHSGAGKSSLLNINL SVPTEGSVTIYNKNLSEMQLLEEIRKITGV
 CPQFNVQFDILT VKENLSLFAKIKGIHLKEVEQEVQRILLELDMQNIQDNLAKHLSEGQRKLTFGITIL
 GDPQILLLDEPTTGLDPFSRDQVWLLRERRADHVILFSTQSMDEADILADRKVIMSNRGLKACGSSMFL
 KRRWGLGYHLSLHRNEICNPEQITSFITHHIPDAKLKTENKEKLVYTLPLERTNTFPDLFSDLKDCSDQG
 VTGYDISMSTLNEVFMKLEGQSTIEQDFEQVEMIRDSESLNEMELAHSSFSEMQTAVSDMGLWRMQVFAM
 ARLRFLKLRQTKVLLTLLLVFGIAIFPLIVENIMYAMLNEKIDWEFKNELYFLSPGQLPQEPRTSLLII
 NNTESNIEDFIKSLKHQNILLEVDDFENRNGTDGLSYNGAIIVSGKQKDYRFSVVCNTRKRLHCFPLMNI
 ISNGLLQMFNHTQHRIESSPPFLSHIGLWTGLPDGSFFLFLVLCSPYITMGSISDYKNAKSQWLWIS
 GLYTSAYWCGQALVDVSFFILILLMLYFIYIENMQYLLITSQIVFALVIVTPGYAASLVFFIYMISFIF
 RKRKNSGLWSFYFFFASTIMFSITLINHFDLSILITTMVLVPSYTLGFKTFLEVRDQEHYREFPEANF
 ELSATDFLVCFIPYFQTLFVFLRCMELKCGKRRMRKDPVFRISPOSRDAKPNPEEPIDEDEDIQTERI
 RTATALTTSILDEKPVIIASCLHKEYAGQKSCFSKRKKKIAARNISFCVQEGEILGLLGPNGAGKSSSI
 RMISGITKPTAGEVELKGCSSVLGHLGYCPQENVLWPLTLREHLEVYAAVKGLRKADARLAIARLVSAF
 KLHEQLNVPVQKLTAGITRKLCLFVLSLLGNLSPVLLLDLDEPTGIDPTGQQQMWQAIQAVVKNTERGVLTT
 HNLAEAALCDRVAIMVSGRLRCIGSIQHLKNLKGKDYILELKVKETSQVTLVHTEILKLFQQAAGQERY
 SSSLTYKLPVADVPLSQTFFHKL EAVKHNFNLEEYLSQCTLEKVFLELSKEQEVGNFDEEIDTTRWKL
 LPHSDEP

TRTRPLE - GFP Tag - V

Restriction Sites: SgfI-MluI

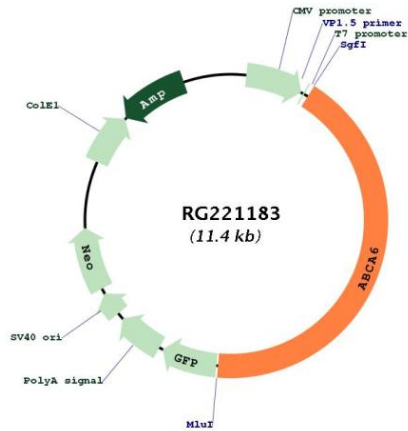
Cloning Scheme:



ACCN: NM_080284

ORF Size:	4851 bp
OTI Disclaimer:	The molecular sequence of this clone aligns with the gene accession number as a point of reference only. However, individual transcript sequences of the same gene can differ through naturally occurring variations (e.g. polymorphisms), each with its own valid existence. This clone is substantially in agreement with the reference, but a complete review of all prevailing variants is recommended prior to use. More info
OTI Annotation:	This clone was engineered to express the complete ORF with an expression tag. Expression varies depending on the nature of the gene.
Components:	The ORF clone is ion-exchange column purified and shipped in a 2D barcoded Matrix tube containing 10ug of transfection-ready, dried plasmid DNA (reconstitute with 100 ul of water).
Reconstitution Method:	<ol style="list-style-type: none">1. Centrifuge at 5,000xg for 5min.2. Carefully open the tube and add 100ul of sterile water to dissolve the DNA.3. Close the tube and incubate for 10 minutes at room temperature.4. Briefly vortex the tube and then do a quick spin (less than 5000xg) to concentrate the liquid at the bottom.5. Store the suspended plasmid at -20°C. The DNA is stable for at least one year from date of shipping when stored at -20°C.
RefSeq:	NM_080284.3
RefSeq Size:	5296 bp
RefSeq ORF:	4854 bp
Locus ID:	23460
UniProt ID:	Q8N139
Cytogenetics:	17q24.2-q24.3
Domains:	ABC_tran, AAA
Protein Families:	Druggable Genome, Transmembrane
Protein Pathways:	ABC transporters
Gene Summary:	The membrane-associated protein encoded by this gene is a member of the superfamily of ATP-binding cassette (ABC) transporters. ABC proteins transport various molecules across extra- and intracellular membranes. ABC genes are divided into seven distinct subfamilies (ABC1, MDR/TAP, MRP, ALD, OABP, GCN20, and White). This encoded protein is a member of the ABC1 subfamily. Members of the ABC1 subfamily comprise the only major ABC subfamily found exclusively in multicellular eukaryotes. This gene is clustered among 4 other ABC1 family members on 17q24 and may play a role in macrophage lipid homeostasis. [provided by RefSeq, Jul 2008]

Product images:



Circular map for RG221183