

## Product datasheet for **RG221168**

### CHRNA1 (NM\_001039523) Human Tagged ORF Clone

#### Product data:

Product Type:	Expression Plasmids
Product Name:	CHRNA1 (NM_001039523) Human Tagged ORF Clone
Tag:	TurboGFP
Symbol:	CHRNA1
Synonyms:	ACHRA; ACHRD; CHRNA; CMS1A; CMS1B; CMS2A; FCCMS; SCCMS
Mammalian Cell Selection:	Neomycin
Vector:	pCMV6-AC-GFP (PS100010)
E. coli Selection:	Ampicillin (100 ug/mL)



[View online »](#)

**ORF Nucleotide Sequence:**

>RG221168 representing NM\_001039523  
 Red=Cloning site Blue=ORF Green=Tags(s)

TTTTGTAATACGACTCACTATAGGGCGGCCGGGAATTCGTCGACTGGATCCGGTACCGAGGAGATCTGCC  
 GCC**GCGATCGCC**

ATGGAGCCCTGGCCTCTCCTCTGCTCTTAGCCTTTGCTCAGCTGGCCTCGTCCTGGGCTCCGAACATG  
 AGACCCGTCTGGTGGCAAAGCTATTTAAAGACTACAGCAGCGTGGTGCAGCCAGTGAAGACCACCGCCA  
 GGTCTGGAGGTACCGTGGCCTGCAGCTGATACAGCTCATCAATGTGGATGAAGTAAATCAGATCGTG  
 ACAACCAATGTGCGTCTGAAACAGGGTACATGGTAGATCTGCCACGCCAGCTGCGTGACTTTGGGAG  
 TTCCTTTGTTTTCTCATCTGCAGAAATGAGCAATGGGTGGATTACAACCTAAAATGGAATCCAGATGACTA  
 TGGCGGTGTAAAAAAATTCACATTCCTTCAGAAAAGATCTGGCGCCAGACCTTGTCTCTATAACAAAT  
 GCAGATGGTGACTTTGCTATTGTCAAGTTCACCAAAGTGTCTCTGCAGTACACTGGCCACATCACGTGGA  
 CACCTCCAGCCATCTTTAAAAGCTACTGTGAGATCATCGTCACCCACTTCCCTTTGATGAACAGAAGT  
 CAGCATGAAGCTGGGCACCTGGACCTACGACGGCTCTGTCGTGGCCATCAACCCGAAAGCGACCAGCCA  
 GACCTGAGCAACTTCATGGAGAGCGGGAGTGGGTGATCAAGGAGTCCCGGGGCTGGAAGCACTCCGTGA  
 CCTATTCTGCTGCCCGACACCCCTACCTGGACATCACCTACCACTTCGTCATGCAGCGCCTGCCCT  
 CTACTTCATCGTCAACGTATCATCCCCTGCCTGCTCTTCTCCTTCTTAAGTGGCCTGGTATTCTACCTG  
 CCCACAGACTCAGGGGAGAAGATGACTCTGAGCATCTCTGTCTTACTGTCTTTGACTGTGTTCTCTCTG  
 TCATCGTGGAGCTGATCCCCTCCAGTCCAGTGTGTGCCCTTGATTGAAAAATACATGCTGTTCCACCAT  
 GGTGTTTCGTCATTGCCTCCATCATCACTGTGATCGTCATCAACACACACCACCGTCCACCCAGCACC  
 CATGTCATGCCAACTGGGTGCGGAAGGTTTTATCGACTATCCCAAATATCATGTTTTCTCCACAA  
 TGAAGAAGACCATCCAGAGAAAAGCAAGACAAAAGATTTTTACAGAAGACATTGATCTCTGACATTC  
 TGGAAAGCCAGGGCCTCCACCCATGGGCTTCCACTCTCCCTGATCAAACACCCGAGGTGAAAAGTGCC  
 ATCGAGGGCATCAAGTACATCGCAGAGACCATGAAGTCAAGCAGGAGTCTAACAATGCGCGGCGAGAGT  
 GGAAGTACGTTGCAATGGTATGGACCACATACTCCTCGGAGTCTTCATGCTTGTGTCATCATCGGAAC  
 CCTAGCCGTGTTGCAGGTGACTCATTGAATTAATCAGCAAGGA

**ACGCGTACGCGGCCGCTCGAG** – GFP Tag – GTTTAA

**Protein Sequence:**

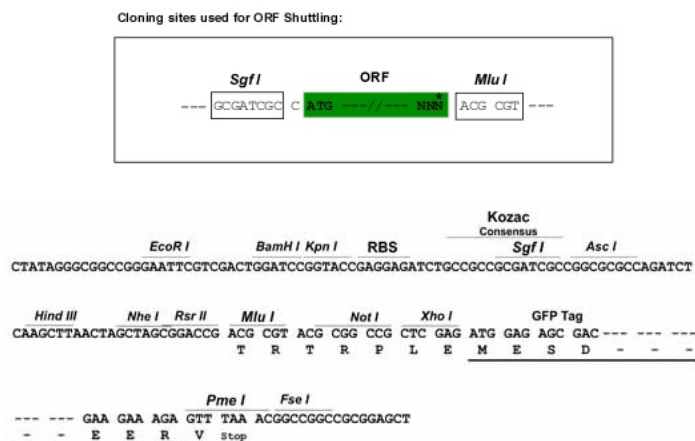
>RG221168 representing NM\_001039523  
 Red=Cloning site Green=Tags(s)

MEPWLLLLLFLCSAGLVLGSEHETRLVAKLFDYSSVVRPVEDHRQVVEVTVGLQLIQLINVDEVNQIV  
 TTNVRLKQGMVDLPRPSCVTLGVPLFSLHQEQWVDYNLKWNPDDYGGVKKIHIPSEKIWRPDLVLYNN  
 ADGDFAIVKFTKVLQYTGHTWTPPAIFKSYCEIIVTHFPFDEQNCMKLGTWYDGSVVAINPESDQP  
 DLSNFMESGEWIKESRGWKHSVTYSCCPDTPYLDITYHFVMQRLPLYFIVNVIIPCLLFSFLTGLVLYL  
 PTDSGEKMTLSISVLLSLTVFLLVIVELIPSTSSAVPLIGKYMFTMVFVIASIIITVIVINTHHRSPST  
 HVMPNWRKVFIDTIPNIMFFSTMKRPSREKQDKIFTEDIDISDISGKPGPPPMGFHSPLIKHPEVKSA  
 IEGIKYIAETMKSDQESNNAAEWKYVAMVMDHILLGVFMLVCIIGTLAVFAGRLIELNQGG

**TRTRPLE** – GFP Tag – V

**Restriction Sites:**

Sgfl-MluI

**Cloning Scheme:**


**ACCN:** NM\_001039523

**ORF Size:** 1446 bp

**OTI Disclaimer:** The molecular sequence of this clone aligns with the gene accession number as a point of reference only. However, individual transcript sequences of the same gene can differ through naturally occurring variations (e.g. polymorphisms), each with its own valid existence. This clone is substantially in agreement with the reference, but a complete review of all prevailing variants is recommended prior to use. [More info](#)

**OTI Annotation:** This clone was engineered to express the complete ORF with an expression tag. Expression varies depending on the nature of the gene.

**Components:** The ORF clone is ion-exchange column purified and shipped in a 2D barcoded Matrix tube containing 10ug of transfection-ready, dried plasmid DNA (reconstitute with 100 ul of water).

**Reconstitution Method:**

1. Centrifuge at 5,000xg for 5min.
2. Carefully open the tube and add 100ul of sterile water to dissolve the DNA.
3. Close the tube and incubate for 10 minutes at room temperature.
4. Briefly vortex the tube and then do a quick spin (less than 5000xg) to concentrate the liquid at the bottom.
5. Store the suspended plasmid at -20°C. The DNA is stable for at least one year from date of shipping when stored at -20°C.

**RefSeq:** [NM\\_001039523.3](#)

**RefSeq Size:** 2040 bp

**RefSeq ORF:** 1449 bp

**Locus ID:** 1134

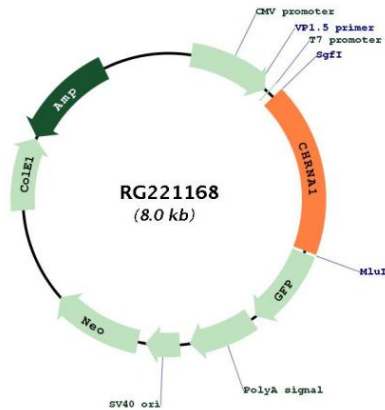
**UniProt ID:** [P02708](#)

**Cytogenetics:** 2q31.1

**Protein Families:** Druggable Genome, Ion Channels: Cys-loop Receptors, Transmembrane

**Gene Summary:** The muscle acetylcholine receptor consists of 5 subunits of 4 different types: 2 alpha subunits and 1 each of the beta, gamma, and delta subunits. This gene encodes an alpha subunit that plays a role in acetylcholine binding/channel gating. Alternatively spliced transcript variants encoding different isoforms have been identified. [provided by RefSeq, Nov 2012]

**Product images:**



Circular map for RG221168