

Product datasheet for **RG221165**

DCP2 (NM_152624) Human Tagged ORF Clone

Product data:

Product Type:	Expression Plasmids
Product Name:	DCP2 (NM_152624) Human Tagged ORF Clone
Tag:	TurboGFP
Symbol:	DCP2
Synonyms:	NUDT20
Mammalian Cell Selection:	Neomycin
Vector:	pCMV6-AC-GFP (PS100010)
E. coli Selection:	Ampicillin (100 ug/mL)
ORF Nucleotide Sequence:	>RG221165 representing NM_152624 Red=Cloning site Blue=ORF Green=Tags(s)

TTTTGTAATACGACTCACTATAGGGCGGCCGGAATTCGTCGACTGGATCCGGTACCGAGGAGATCTGCC
GCC**CGATCGCC**

ATGGAGACCAAACGGGTGGAGATCCCGGCAGCGTCCTGGACGATCTCTGCAGCCGATTTATTTGCATA
TTCCCAGCGAGGAAAGAGACAATGCAATCCGAGTGTGTTTTAGATTGAAGCTTGGCCATTGGTTTTACTT
GGATTTCTACATGCAGAACACACCAGGATTACCTCAGTGTGGGATAAGAGACTTTGCTAAAGCTGTCTTC
AGTCATTGTCCGTTTTGCTGCCTCAAGGTGAAGATGTGGAAAAAGTTTTGGATGAATGGAAGGAATATA
AAATGGGAGTACCAACATATGGTGCAATTATTCTTGATGAGACACTTGAAAATGTACTACTAGTTCAGGG
GTACCTAGCAAAATCAGGCTGGGGATTTCCAAAAGGAAAAGTAAATAAAGAAGAAGCTCCTCATGATTGT
GCTGCTAGAGAGGCTTTTGAAGAACTGGTTTTGATATCAAAGACTATATTTGTAAGGATGATTACATTG
AACTTCGAATCAATGACCAGCTTGTCTGTTGTACATCATTCCAGGAATTCAAAAGACACAAAATTTAA
CCCAAAAAGTAAAGAGAAATTCGGAACATTGAGTGGTTCTCTATTGAGAAATGCCTTGTGCATAGAAAT
GATATGACCCCCAAATCCAACTTGGTTTGGCACCTAACAAAATTTTTATGGCCATTCCCTTTATCAGAC
CATTAAAGGGACTGGCTTCTCGAAGATTGGCGATTCTCAGACAGTGACAATGGATTTTCTCAACTGG
TAGCACGCCGGCTAAACCACTGTGAAAAATTGAGTCGAACCAATTCGCCACAGTCAGCAGTTATTT
CCTGACGGTTCCTGGTGACCAGTGGGTAAGCACAGGCAACCACTGCAGCAAAAGCCATATAATAATC
ATTCTGAAATGTCTGACTTTTAAAAGGAAAGAAATCAAAGTATGAGGGGAAATGGCAGAAAACAGTATCA
AGATTCACCTAATCAAAAAGAAAAGAACAAATGGCTTCAGCCAGCAAAGCAGCAGAAATCTTTGATGAAG
TGTGAAAAGAACTTCATCCACGAAAATTCAGGATAATTTGAAACAGATGCTGTATATGACTTGCCTA
GCTCCAGTGAAGACCAGTTGCTAGAACATGCTGAGGGACAGCCCGTGGCATGTAATGGACATTGCAAGTT
CCCCTTTTCATCCAGAGCCTTTTTGAGTTTCAAGTTTGACCATAATGCTATAATGAAAATCTTGACCTT

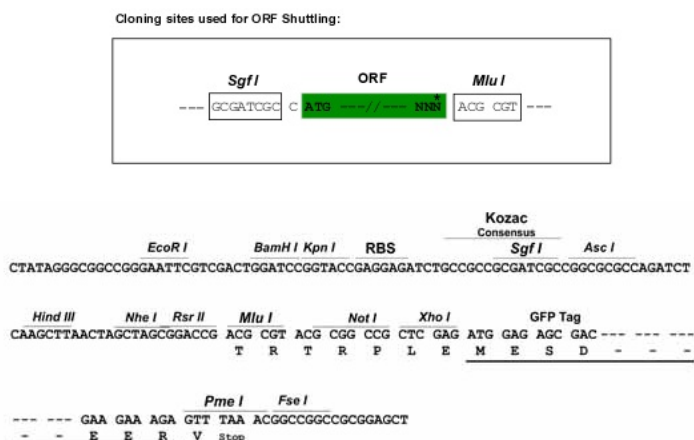
ACGCGTACGCGGCCGCTCGAG - GFP Tag - GTTTAA



[View online »](#)

Restriction Sites: SgfI-MluI

Cloning Scheme:



ACCN: NM_152624

ORF Size: 1260 bp

OTI Disclaimer: The molecular sequence of this clone aligns with the gene accession number as a point of reference only. However, individual transcript sequences of the same gene can differ through naturally occurring variations (e.g. polymorphisms), each with its own valid existence. This clone is substantially in agreement with the reference, but a complete review of all prevailing variants is recommended prior to use. [More info](#)

OTI Annotation: This clone was engineered to express the complete ORF with an expression tag. Expression varies depending on the nature of the gene.

Components: The ORF clone is ion-exchange column purified and shipped in a 2D barcoded Matrix tube containing 10ug of transfection-ready, dried plasmid DNA (reconstitute with 100 ul of water).

Reconstitution Method:

1. Centrifuge at 5,000xg for 5min.
2. Carefully open the tube and add 100ul of sterile water to dissolve the DNA.
3. Close the tube and incubate for 10 minutes at room temperature.
4. Briefly vortex the tube and then do a quick spin (less than 5000xg) to concentrate the liquid at the bottom.
5. Store the suspended plasmid at -20°C. The DNA is stable for at least one year from date of shipping when stored at -20°C.

RefSeq: [NM_152624.6](#)

RefSeq Size: 8947 bp

RefSeq ORF: 1263 bp

Locus ID: 167227

UniProt ID: [Q8IU60](#)

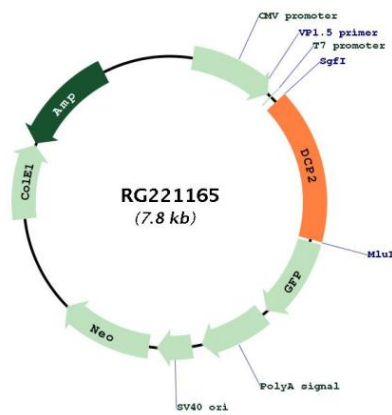
Cytogenetics: 5q22.2

Domains: NUDIX, DCP2

Protein Pathways: RNA degradation

Gene Summary: The protein encoded by this gene is a key component of an mRNA-decapping complex required for degradation of mRNAs, both in normal mRNA turnover, and in nonsense-mediated mRNA decay (NMD). It removes the 7-methyl guanine cap structure from mRNA, prior to its degradation from the 5' end. Alternatively spliced transcript variants encoding different isoforms have been noted for this gene.[provided by RefSeq, Jun 2011]

Product images:



Circular map for RG221165