

Product datasheet for **RG221118**

SORBS2 (NM_021069) Human Tagged ORF Clone

Product data:

Product Type:	Expression Plasmids
Product Name:	SORBS2 (NM_021069) Human Tagged ORF Clone
Tag:	TurboGFP
Symbol:	SORBS2
Synonyms:	ARGBP2; PRO0618
Mammalian Cell Selection:	Neomycin
Vector:	pCMV6-AC-GFP (PS100010)
E. coli Selection:	Ampicillin (100 ug/mL)
ORF Nucleotide Sequence:	>RG221118 representing NM_021069 Red=Cloning site Blue=ORF Green=Tags(s)

TTTTGTAATACGACTCACTATAGGGCGGCCGGAATTCGTCGACTGGATCCGGTACCGAGGAGATCTGCC
GCC**CGATCGCC**

ATGAGTTACTATCAGAGGCCGTTTTCCCCCTCGGCATATTCTCTCCAGCCTCACTCAACTCCAGCATTG
TCATGCAGCACGGCACATCCCTCGATTCCACAGACACATATCCCCAGCATGCGCAGTCTCTGGATGGCAC
CACCAGCAGCTCTATCCCCGTACCGATCCTCAGAGGAAGAGAAGAGAGTGACAGTCATCAAAGCCCCG
CATTACCCAGGGATCGGGCCCGTGGATGAATCCGGAATCCCACAGCAATTAGAACGACAGTCGACCCGGC
CCAAGGACTGGTACAAGACGATGTTAAGCAAATTCACATGGTGCACAAGCCGGATGATGACACAGACAT
GTATAATACTCCTTATACATAACAATGCAGGTCTGTACAACCCACCTACAGTGCTCAGTCACACCCTGCT
GCAAAGACCCAAACCTACAGACCTCTTTCCAAAAGCCACTCCGACAACAGCCCCAATGCCTTTAAGGATG
CGTCTCCCCAGTGCCTCCCCACATGTTCCACCTCCAGTCCCAGCCGCTTCGACCAAGAGATCGGTCTTC
AACAGAAAAGCATGACTGGGATCCTCCAGACAGAAAAGTGGACACAAGAAAATTTTCGGTCTGAGCCAAGG
AGTATTTTTGAATATGAACCTGGCAAGTCATCAATTTCTCAGCATGAAAGACCAGCCTCCTTGATCAGT
CCTCTATAGACAGAAGCCTGGAAAGACCCATGAGTCTGCAAGCATGGCCAGTGAATTCAGGAAGCGGAG
GAAGAGCGAGCCTGCAGTGGTCCACCACGGGGCTTGGGAGATCAAAGTGCAGCAGGACTAGCCCCAGGC
CGAGTGGACCTCCAGGATCAAGCACCCTTTACAAAGTCTTTCACTAGCTCTTCTCCTTCTTCCCCAT
CAAGAGCAAAAGGTGGGATGATAGCAAAATATGTCCATCCCTTTGCAGTTACTCAGGGCTCAACGGCAA
CCCCCTCAGTGAGTTAGATTACTGTAGCACTTACAGACAGCACTTGGATGTCCCTCGGGACTCACCAAGA
GCCATTAGTTTCAAGAACGGCTGGCAAATGGCCCGCAAACGCAGAAATCTGGAGCAGCAGGAAGAAA
CCGTCTCTCCAAAATCAAATCCCGGAGCTGTGACGATCTCCTAACGACGACTGCGATAGCTTCCCGGA
CCCGAAAGTCAAGTCGAAAGCATGGGCTCCCTGTTATGTGAGGAGGACTCCAAGGAGAGCTGCCCCATG
GCGTGGGGTCCCCCTACGTCCCGGAGTTCGAGTAACGGCAGATCAAGGATCAGACACAGGTGAGCCC
GCAACGCCCGGGTTCCTGAAGATGTACAAGAAAATGCACCGCATCAACCGCAAGGACCTGATGAACTC
CGAGGTGATCTGCTCCGTAAGTCCAGGATTCTGCAGTACGAGAGCGAGCAGCAGCAAGGACCTGCTG



[View online >](#)

CGCGCCTGGAGCCAGTGCTCCACGGAGGAGGTGCCCCGGGACATGGTGCCACACGCATCTCCGAATTCG
 AAAAGCTGATCCAGAAGTCCAAATCCATGCCAAATTTAGGGGATGACATGCTGTCTCCCGTAACCCCTAGA
 ACCACCGCAAAATGGCCTATGTCCCAAGAGGCGGTTTTCCATTGAGTATTTGCTGGAGGAAGAAAATCAA
 AGCGGCCCCCGCTCGGGGCCGGCAGGCTGCCAGTCTAACGCCTGGTGCCATTACATTGAAGTCA
 CCAGCGATGAGCAGCCCCGAGCACAGTGGAGTTTTCCGACAGCGACCAGGACGGGGTTGTGCCACCA
 CAGTGACTACATTACCTAGAGGGGTATCCTTCTGCAGTGAAAGTGACTTTGATCACTTTTCTTCCACA
 TCCTCCGAAAGCTTTTACGGATCCAGCCACCACCACCACCACCACCACCACCACCACCACCACCCTCA
 TCAGTCTCTGCAAAAGGCAGGTGCCCGCCTCTACACTCGATTTACCACAATGTTAAAACACGAAAAGGC
 CAGACACGAAAACACCGAGGAGCCAGAAAGCAAGAAATGGACCCTGGCCTTTCTAAACTTGCTTTTCTA
 GTCAGTCTGTGCCTTTCCGGAGGAAAAAAATTCGGCTCCTAAGAAACAGACTGAAAAGGCAAAAATGTA
 AAGCATCTGTGTTTGGGCTCTGGACTCTGCCCTTAAAGACATCTGTGACCAAATTAAGCTGAAAAAGAA
 AAGGGGGAGCTTGCCGGACAACAGCATCTGCACCGCCTCATCAGTGAGCTGCTGCCAGATGTTCCCGAG
 AGGAACTCATCCCTGAGAGCGCTGAGGAGGAGCCCTGCACCAGCCTCTCCACCCTGCTCCCGATG
 GTGCTATTATTGTCACCTACCAGAATGACTGCGGGAGAATGCCCGCAGTGCCTCTTCCAAGACGT
 GGACACAGCCAACAGCAGCTGCCACCACCAAGACCGTGGCGGTGCACTCCAAGACCGTGAGTCCCCTAGA
 AGTTACTCATCCACTTTGACTGACATGGGGAGAAGTGCACCAAGGGAAAGAGAGAACTCCAGAAAAAG
 AGAAATTCCTGCAAAAGCTGTTTATGATTTTAAAGCTCAGACATCTAAGGAGTTGTCATTTAAGAAAGG
 AGATACTGTCTACATCCTCAGGAAAATGATCAAAATTTGGTATGAGGGAGAACACCACGGGAGAGTGGGC
 ATCTTCCCGATCTCATACGTAGAGAAAATCACACCTCCTGAGAAAAGCACAGCCTGCAAGACCACCTCCGC
 CAGCCCAGCCCGGAGAAAATCGGAGAAGCTATAGCCAAATACAACCTCAACGCAGACACAAATGTGGAGCT
 GTCAGTGAAGGGAGATAGAGTTATTTCTTAAAAGAGTTGATCAAACTGGTATGAAGGTAATCAATC
 CCAGAACCAACAGACAAGGCATCTTCCCTGTTTCTTAAAGAGTTGATCAAACTGGTATGAAGGTAATCA
 CTGAGGACTACCCTGACCTCCAATACCCACAGCTATTCTAGTGATAGGATTCACAGCTGAGCTCAAA
 TAAGCCACAGCGCTCTGTGTTTACTCATGAAAATATTCAAGGTGGGGGGAAACCGTTTACGGCTCTGTAT
 AACTATACTCCAGGAATGAAGATGAGCTGAGGACTCAGAGAAAAGTATGTCATTGATGTCATGAAAAGT
 GTGATGACGGCTGGTTTGTGGGACCTCAAGAAGAACCAATTCTTTGTTACTTTCCCGGAAACTACGT
 CAAGAGGCTG

ACGCGTACGCGGCCGCTCGAG – GFP Tag – GTTTAA

Protein Sequence:

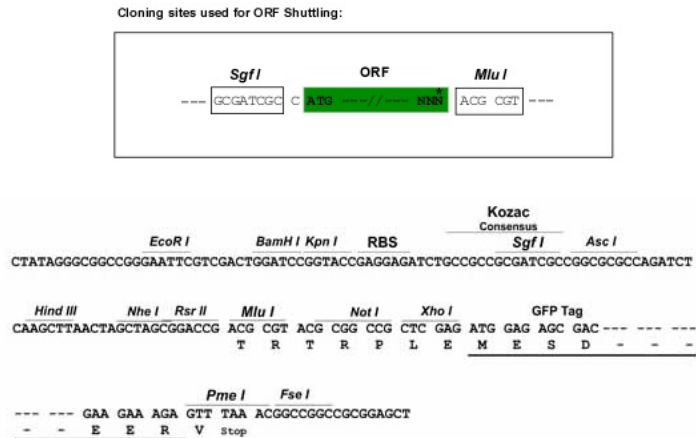
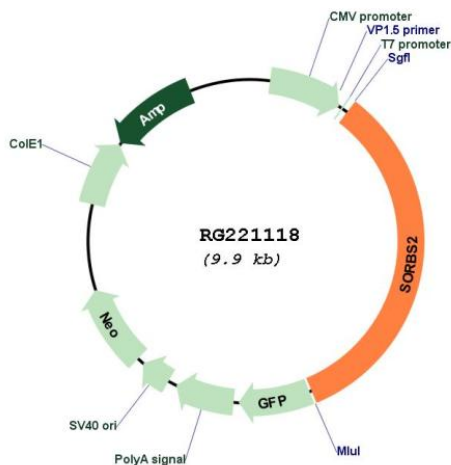
>RG221118 representing NM_021069
 Red=Cloning site Green=Tags(s)

MSYYQRPFSPSAYSLSASLNSSIVMQHGTSLDSTDTYPQHAQSLDGTSSSIPL YRSSEEEKRVTVIKAP
 HYPGIGPVDESGIPTAIRTTVDRPKDWYKTMFKQIHMVHKPDDDDMYNTPYTYNAGLYNPPYSAQSHPA
 AKTQTYRPLSKSHSDNSPNAFKDASSPVPPPVPPLRPRDRSSTEKHDWDPDRKVDTRKFRSEPR
 SIFEYEPKSSILQHERPASLYQSSIDRSLERPMSASMASDFRKRKSEPAVGPPRGLGDQASRTSPG
 RVDLPGSSTTLTKSFTSSSPSSRAKGGDDSKICPSLCSYSLNGNPSSELDYCYSTRQHLDVPRDSPR
 AIFSFKNGWQMARQNAEIIWSSTEETVSPKIKSRSCDLLNDDCDSFDPKVKSESMGSLLEEDSKESCPM
 AWGSPYVPEVRSNGRSRIRHRSARNAPGFLKMYKMHRI NRKDLMNSEVICSVKSRI LQYESEQQHKDLL
 RAWSQCSTEEVPRDMVPTRISEFEKLIQKSKSMPNLGDDMLSPVTLEPPQNGLCPKRRFSIEYLLEENQ
 SGPPARGRRGCQSNALVPIHIEVTSDEQPAHVEFSDSDQDGVSDHSDYIHLEGSFCSSEDFDHFST
 SSESFYGSSHHHHHHHHHRHLISSCKGRCPASYTRFTTMLKHERARHENTEPRRQEMDPGLSKLAF
 VSPVFFRRKNSAPKKQTEKAKCKASVFEALDSALKDIDQIKAEKKRGLPDNSILHRLISELLPDVPE
 RNSLRLRRSPLHQPLHPLPDGAIHCPPYQNDGMRMPSASFQDQVDTANSSCHHQDRGGALQDRESR
 SYSSTLDMGRSAPRERRGTPEKEKLPKAVYDFKAQTSKELSFKKGDTVYILRKIDQNWYEGEHHGRV
 IFPISYVEKLTPEKAQPARPPPAQPGEIGEAIAKYNFNADTNVELSLRKGDRVILLKRVQDNWYEGKI
 PGTNRQGIFFVSYVEVVKNTKGAEYDPPPIPHSYSSDRIHSLSSNKQRPVFTHENIQGGGEPFQALY
 NYTPRNEDELELRESVDIVMEKDDGWFVGTSRRTKFFGTFFPGNYVKRL

TRTRPLE – GFP Tag – V

Restriction Sites:

Sgfl-MluI

Cloning Scheme:

Plasmid Map:


ACCN: NM_021069

ORF Size: 3300 bp

OTI Disclaimer: The molecular sequence of this clone aligns with the gene accession number as a point of reference only. However, individual transcript sequences of the same gene can differ through naturally occurring variations (e.g. polymorphisms), each with its own valid existence. This clone is substantially in agreement with the reference, but a complete review of all prevailing variants is recommended prior to use. [More info](#)

OTI Annotation: This clone was engineered to express the complete ORF with an expression tag. Expression varies depending on the nature of the gene.

Components:	The ORF clone is ion-exchange column purified and shipped in a 2D barcoded Matrix tube containing 10ug of transfection-ready, dried plasmid DNA (reconstitute with 100 ul of water).
Reconstitution Method:	<ol style="list-style-type: none">1. Centrifuge at 5,000xg for 5min.2. Carefully open the tube and add 100ul of sterile water to dissolve the DNA.3. Close the tube and incubate for 10 minutes at room temperature.4. Briefly vortex the tube and then do a quick spin (less than 5000xg) to concentrate the liquid at the bottom.5. Store the suspended plasmid at -20°C. The DNA is stable for at least one year from date of shipping when stored at -20°C.
RefSeq:	<u>NM_021069.5</u>
RefSeq Size:	4435 bp
RefSeq ORF:	3303 bp
Locus ID:	8470
UniProt ID:	<u>O94875</u>
Cytogenetics:	4q35.1
Domains:	SH3, Sorb
Gene Summary:	Arg and c-Abl represent the mammalian members of the Abelson family of non-receptor protein-tyrosine kinases. They interact with the Arg/Abl binding proteins via the SH3 domains present in the carboxy end of the latter group of proteins. This gene encodes the sorbin and SH3 domain containing 2 protein. It has three C-terminal SH3 domains and an N-terminal sorbin homology (SoHo) domain that interacts with lipid raft proteins. The subcellular localization of this protein in epithelial and cardiac muscle cells suggests that it functions as an adapter protein to assemble signaling complexes in stress fibers, and that it is a potential link between Abl family kinases and the actin cytoskeleton. Alternative splicing results in multiple transcript variants encoding different isoforms. [provided by RefSeq, Jul 2008]