

Product datasheet for **RG221075**

Cytochrome P450 26B (CYP26B1) (NM_019885) Human Tagged ORF Clone

Product data:

Product Type:	Expression Plasmids
Product Name:	Cytochrome P450 26B (CYP26B1) (NM_019885) Human Tagged ORF Clone
Tag:	TurboGFP
Symbol:	Cytochrome P450 26B
Synonyms:	CYP26A2; P450RAI-2; P450RAI2; RHFCA
Mammalian Cell Selection:	Neomycin
Vector:	pCMV6-AC-GFP (PS100010)
E. coli Selection:	Ampicillin (100 ug/mL)



[View online »](#)

ORF Nucleotide Sequence:

>RG221075 representing NM_019885
 Red=Cloning site Blue=ORF Green=Tags(s)

TTTTGTAATACGACTCACTATAGGGCGGCCGGGAATTCGTCGACTGGATCCGGTACCGAGGAGATCTGCC
 GCC**CGGATCGCC**

ATGCTCTTTGAGGGCTTGGATCTGGTGTGCGGCGTGGCCACCCTCGCCGCTGCCTGGTGTCCGTGACGC
 TGCTGCTGGCCGTGTGCGAGCAGCTGTGGCAGCTGCGCTGGGCCGCCACTCGCGACAAGAGCTGCAAGCT
 GCCCATCCCCAAGGGATCCATGGCTTCCCGCTCATCGGAGAGACCGGCCACTGGCTGCTGCAGGGTTCT
 GGCTTCCAGTCGTCGCGGAGGGAGAAGTATGGCAACGTGTTCAAGACGCATTTGTTGGGGCGGCCGCTGA
 TACGCGTGACCGGCGGGAGAAGCTGCGCAAGATCCTCATGGGCGAGCACCACCTCGTGAGCACCAGTG
 GCCTCGCAGCACC CGCATGTTGCTGGGCCCAACACGGTGTCCAATTCATTGGCGACATCCACCACAAC
 AAGCGCAAGGTCTTCTCCAAGATCTTCAGCCACGAGGCCCTGGAGAGTTACCTGCCCAAGATCCAGCTGG
 TGATCCAGGACACACTGCGCGCTGGAGCAGCCACCCCGAGGCCATCAACGTGTACCAGGAGGCGCAGAA
 GCTGACCTCCGCATGGCCATCCGGGTGCTGCTGGGCTTACGATCCCTGAGGAGACCTTGGGCACCTC
 TTTGAGGTCTACCAGCAGTTTGTGGACAATGTCTTCTCCCTGCCTGTCGACTGCCCTTCACTGGCTACC
 GGCGGGGCATTACGGCTCGGCAGATCCTGCAGAAGGGGCTGGAGAAGGCCATCCGGGAGAAGCTGCAGTG
 CACACAGGGCAAGGACTACTTGGACGCCCTGGACCTCCTCATTGAGAGCAGCAAGGAGCAGCGGAAGGAG
 ATGACCATGCAGGAGCTGAAGGACGGGACCCTGGAGCTGATCTTTGCGGCCTATGCCACCACGGCCAGCG
 CCAGCACCTCACTCATATGCAGCTGCTGAAGCACCCACTGTGCTGGAGAAGCTGCGGGATGAGCTGCG
 GGCTCATGGCATCCTGCACAGTGGCGGCTGCCCTGCGAGGGCACACTGCGCCTGGACACGCTCAGTGGG
 CTGCGCTACCTGGACTGCGTCAATCAAGGAGTTCATGCGCCTGTTACGCCCATTTCCGGCGGCTACCGCA
 TTGTGCTGCAGACCTTCGAGCTTGTGGTTTCCAGATCCCCAAAGGCTGGAGTGCATGTATAGCATCCG
 GGACACCCATGACACAGCGCCCGTGTTCAAAGAGTGAACGTGTTGACCCCGATCGCTTACGCCAGGCG
 CGGAGCGAGGACAAGGATGGCCGCTTCCATTACCTCCCGTTCCGGTGGCGGTGTCCGGACCTGCTGGGCA
 AGCACCTGGCCAAGCTGTTCTGAAGGTGCTGGCGGTGGAGCTGGCTAGCACCAGCCGCTTTGAGCTGGC
 CACACGGACCTTCCCCGCATCACCTTGGTCCCGTCTGCACCCCGTGGATGGCCTCAGCGTCAAGTTC
 TTTGGCCTGGACTCAACCAGAACGAGATCCTGCCGGAGACGGAGGCCATGCTGAGCGCCACAGTC

AG**CGGACCG**ACGCGTACGCGGCCGCTCGAG - GFP Tag - GTTAA

Protein Sequence:

>RG221075 representing NM_019885
 Red=Cloning site Green=Tags(s)

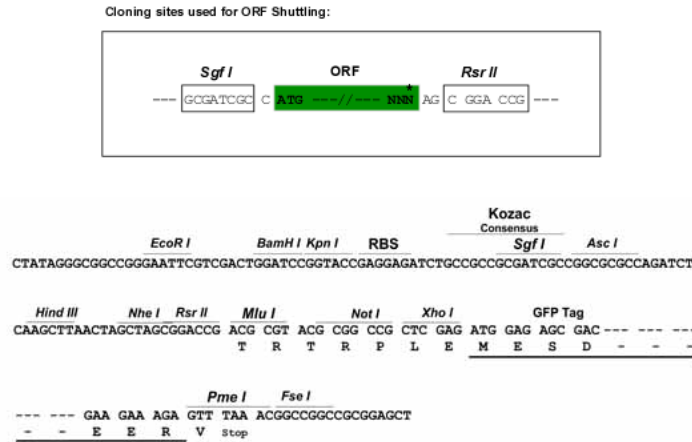
MLFEGLDLVSALATLAACLVSVTLTLLAVSQQLWQLRWAATRDKSKLPIPKGSMGFPLIGETGHLLQGS
 GFQSSRREKYGNVFKTHLLGRPLIRVTGAENVRKILMGEHHLVSTEWPRSTRMLLPNTVSNISIGDIHRN
 KRKVFVSKIFSHEALESYLPIQLVIQDTLRAWSSHPEAINVYQEAQKLTFRMAIRVLLGFSIPEEDLGH
 FEVYQQFVDNVFSLPVDLPFSGYRRGIQARQILQKLEKAIREKLQCTQKDYLDALDLLIESSKEHGKE
 MTMQELKDGTLELIFAAYATTASASTSLIMQLLKHPTVLEKLRDELRAHGILHSGGPCCEGLRLDLSG
 LRYLDCVKEVMRLFTPISGGYRTVLQTFELDGFQIPKGWSVMYSIRDTHDTAPVFKDQVNVFDPDRFSQA
 RSEDKDGRFHYPFGGGVRTCLGKHLAKLFLKVLAVELASTSRFELATRTFPRITLVPVLPVLDGLSVKF
 FGLDSNQNEILPETEAMLSATV

SGP**TRRRLE** - GFP Tag - V

Restriction Sites:

Sgfl-RsrII

Cloning Scheme:



ACCN: NM_019885

ORF Size: 1536 bp

OTI Disclaimer: Due to the inherent nature of this plasmid, standard methods to replicate additional amounts of DNA in E. coli are highly likely to result in mutations and/or rearrangements. Therefore, OriGene does not guarantee the capability to replicate this plasmid DNA. Additional amounts of DNA can be purchased from OriGene with batch-specific, full-sequence verification at a reduced cost. Please contact our customer care team at custsupport@origene.com or by calling 301.340.3188 option 3 for pricing and delivery.

The molecular sequence of this clone aligns with the gene accession number as a point of reference only. However, individual transcript sequences of the same gene can differ through naturally occurring variations (e.g. polymorphisms), each with its own valid existence. This clone is substantially in agreement with the reference, but a complete review of all prevailing variants is recommended prior to use. [More info](#)

OTI Annotation: This clone was engineered to express the complete ORF with an expression tag. Expression varies depending on the nature of the gene.

Components: The ORF clone is ion-exchange column purified and shipped in a 2D barcoded Matrix tube containing 10ug of transfection-ready, dried plasmid DNA (reconstitute with 100 ul of water).

- Reconstitution Method:
1. Centrifuge at 5,000xg for 5min.
 2. Carefully open the tube and add 100ul of sterile water to dissolve the DNA.
 3. Close the tube and incubate for 10 minutes at room temperature.
 4. Briefly vortex the tube and then do a quick spin (less than 5000xg) to concentrate the liquid at the bottom.
 5. Store the suspended plasmid at -20°C. The DNA is stable for at least one year from date of shipping when stored at -20°C.

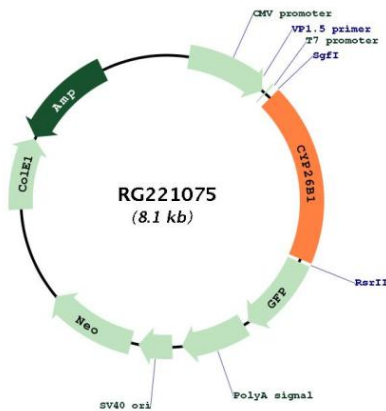
RefSeq: [NM_019885.3](#), [NP_063938.1](#)

RefSeq Size: 4534 bp
 RefSeq ORF: 1539 bp
 Locus ID: 56603
 UniProt ID: [Q9NR63](#)
 Cytogenetics: 2p13.2
 Protein Families: Druggable Genome, P450

Protein Pathways: Retinol metabolism

Gene Summary: This gene encodes a member of the cytochrome P450 superfamily. The cytochrome P450 proteins are monooxygenases which catalyze many reactions involved in drug metabolism and synthesis of cholesterol, steroids and other lipids. The encoded protein is localized to the endoplasmic reticulum, and functions as a critical regulator of all-trans retinoic acid levels by the specific inactivation of all-trans retinoic acid to hydroxylated forms. Mutations in this gene are associated with radiohumeral fusions and other skeletal and craniofacial anomalies, and increased levels of the encoded protein are associated with atherosclerotic lesions. Alternative splicing results in multiple transcript variants. [provided by RefSeq, Apr 2013]

Product images:



Circular map for RG221075