

Product datasheet for **RG221063**

CNG3 (CNGA3) (NM_001298) Human Tagged ORF Clone

Product data:

Product Type:	Expression Plasmids
Product Name:	CNG3 (CNGA3) (NM_001298) Human Tagged ORF Clone
Tag:	TurboGFP
Symbol:	CNGA3
Synonyms:	ACHM2; CCNC1; CCNCa; CCNCalpha; CNGG3; CNG3
Mammalian Cell Selection:	Neomycin
Vector:	pCMV6-AC-GFP (PS100010)
E. coli Selection:	Ampicillin (100 ug/mL)



[View online »](#)

ORF Nucleotide
Sequence:

>RG221063 representing NM_001298
Red=Cloning site Blue=ORF Green=Tags(s)

TTTTGTAATACGACTCACTATAGGGCGGCCGGGAATTCGTCGACTGGATCCGGTACCGAGGAGATCTGCC
GCCCGCATCGCC

ATGGCCAAGATCAACACCCAATACTCCCACCCCTCCAGGACCCACCTCAAGGTAAGACCTCAGACCGAG
ATCTCAATCGCGCTGAAAATGGCCTCAGCAGAGCCCACTCGTCAAGTGAGGAGACATCGTCAGTGTGCA
GCCGGGGATCGCCATGGAGACCAGAGGACTGGCTGACTCCGGGCAGGGCTCCTTACCAGGCCAGGGGATC
GCCAGGCTGTCGCGCCTCATCTTCTTGCTGCGCAGGTGGGCTGCCAGGCATGTGCACCACCAGGACCAGG
GACCGGACTCTTTTCTGATCGTTTCCGTGGAGCCGAGCTTAAGGAGGTGTCCAGCCAAGAAAGCAATGC
CCAGGCAAATGTGGCAGCCAGGAGCCAGCAGACAGAGGAGAAGCGCCTGGCCCTGGCCAAATGCAAC
ACTAACACCAGCAACAACACGGAGGAGGAGAAGAAGACGAAAAAGAAGGATGCGATCGTGGTGGACCCGT
CCAGCAACCTGTACTACCGCTGGCTGACCGCCATCGCCCTGCCTGTCTTATAACTGGTATCTGCTTAT
TTGACGGGCTGTTTCGATGAGCTGCAGTCCGAGTACCTGATGCTGTGGTGGTCTGGACTACTCGGCA
GATGTCCTGTATGCTTGGATGTCTTGTACGAGCTCGGACAGGTTTTCTCGAGCAAGGCTTAATGGTCA
GTGATACCAACAGGCTGTGGCAGCATTACAAGACGACCACGCAGTTCAAGCTGGATGTGTTGTCCCTGGT
CCCCACCGACTGGCTTACTTAAAGGTGGGCACAACTACCCAGAAGTGAGGTTCAACCGCCTACTGAAG
TTTTCCCGGCTCTTTGAATTCTTTGACCGCACAGAGACAAGGACCAACTACCCCAATATGTTTCAGGATTG
GGAAGTGGTCTTGTACATTCTCATCATCCACTGGAATGCCTGCATCTACTTTGCCATTTCCAAGTT
CATTGGTTTTGGACAGACTCCTGGGTCTACCCAAACATCTCAATCCCAGAGCATGGGCGCCTCTCCAGG
AAGTACATTTACAGTCTCTACTGGTCCACCTTGACCCCTACCACCATTGGTGAGACCCACCCCGTGA
AAGATGAGGAGTATCTCTTTGTGGTGTAGACTTCTTGGTGGTGTCTGATTTTTGCCACCATTGTGGG
CAATGTGGGCTCCATGATCTCGAATATGAATGCCTCACGGGCAGAGTTCAGGCCAAGATTGATTCCATC
AAGCAGTACATGCAGTTCGCAAGGTACCAAGGACTTGAGACGCGGGTTATCCGGTGGTTTACTACC
TGTGGGCAACAAGAAGACGGTGGATGAGAAGGAGGTGCTCAAGAGCCTCCAGACAAGCTGAAGGCTGA
GATCGCCATCAACGTGCACCTGGACACGCTGAAGAAGGTTTCGATCTTCCAGGACTGTGAGGCAGGGCTG
CTGGTGGAGCTGGTGTGAAGCTGCGACCCACTGTGTTCCAGCCCTGGGGATTATATCTGCAAGAAGGGAG
ATATTGGGAAGGAGATGTACATCATCAACGAGGGCAAGCTGGCCGTGGTGGCTGATGATGGGGTCAACCA
GTTCTGGTCTCAGCGATGGCAGCTACTTCGGGGAGATCAGCATTCTGAACATCAAGGGGAGCAAGTCCG
GGGAACCGCAGGACGGCCAACATCCGCAGCATTGGCTACTCAGACCTGTTCTGCCTCTCAAAGGACGATC
TCATGGAGGCCCTCACCGAGTACCCGAAGCCAAGAAGGCCCTGGAGGAGAAAGGACGGCAGATCCTGAT
GAAAGACAACCTGATCGATGAGGAGCTGGCCAGGGCGGGCGGACCCCAAGGACCTTGAGGAGAAAGTG
GAGCAGCTGGGGTCTCCCTGGACACCCTGCAGACCAGGTTTGCACGCCTCCTGGCTGAGTACAACGCCA
CCCAGATGAAGATGAAGCAGCGTCTCAGCCAACCTGAAAGCCAGGTGAAGGGTGGTGGGGACAAGCCCT
GGCTGATGGGGAAGTTCCCGGGGATGCTACAAAAACAGAGGACAAACAACAG

ACGCGTACGCGGCCGCTCGAG – GFP Tag – GTTTAA

Protein Sequence: >RG221063 representing NM_001298
 Red=Cloning site Green=Tags(s)

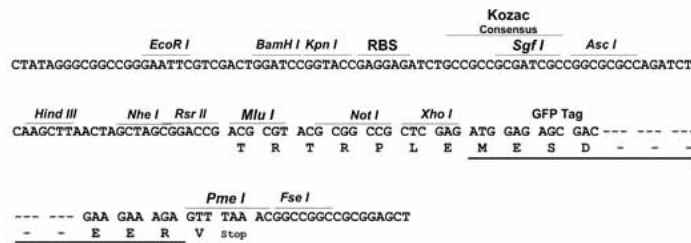
MAKINTQYSHPSRTHLKVKTSRDLNRAENGLSRAHSSSEETSSVLQPGIAMETRGLADSGQGSFTGQGI
 ARLSRLIFLLRRWAARHVHHQDQGPDSFPDRFRGAELKEVSSQESNAQANVGSQEPADRGRSAWPLAKCN
 TNTSNNTSEEEKTKKKDAIVVDPSSNLYYRWLTAIALPVFYNWYLLICRACFDELQSEYLMWLVLDYSA
 DVLVYLDVLRARTGFLEQGLMVSNTNRLWQHYKTTTQFKLDVLSLVPTDLAYLKVGTNYPEVRFNRLK
 FSRLFEFFDRTETRTNYPNMFRIENLVLYLIIHWNACIYFAISKFIGFTDSWVYPNISIPHEGRLSR
 KYIYSLYWSTLTLTTIGETPPPVKDEEYLFVVVDLFLVGLIFATIVGNVGSMSNMNASRAEFQAKIDS
 KQYMQFRKVTKDLETRVIRWFDYLWANKKTVDKEVLKSLPDKLKAIEAINVHLDLTKKVRIFQDCEAGL
 LVELVLKLRPTVFSFGDYICKKGDIGKEMYINEGKLAVVADDGVTQFVVLSDGSYFGEISILNIKSKS
 GNRRTANIRSIGYSDLFCLSKDDLMEALTEYPEAKKALEEKGRQILMKDNLIDEELARAGADPKDLEEK
 EQLGSSLDLQTRFARLLAEYNATQMKMKQRLSQLESQVKGKGDPLADGEVPGDATKTEDKQQ

TRTRPLE - GFP Tag - V

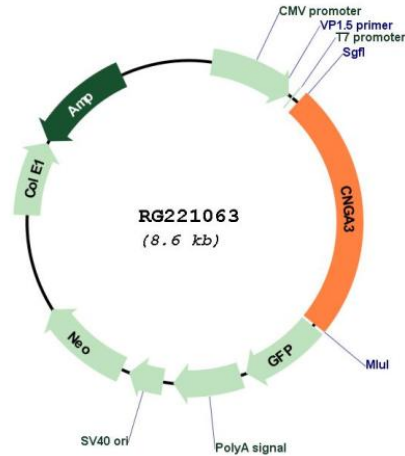
Restriction Sites: SgfI-MluI

Cloning Scheme:

Cloning sites used for ORF Shuttling:



Plasmid Map:



ACCN: NM_001298

ORF Size: 2082 bp

OTI Disclaimer: The molecular sequence of this clone aligns with the gene accession number as a point of reference only. However, individual transcript sequences of the same gene can differ through naturally occurring variations (e.g. polymorphisms), each with its own valid existence. This clone is substantially in agreement with the reference, but a complete review of all prevailing variants is recommended prior to use. [More info](#)

OTI Annotation: This clone was engineered to express the complete ORF with an expression tag. Expression varies depending on the nature of the gene.

Components: The ORF clone is ion-exchange column purified and shipped in a 2D barcoded Matrix tube containing 10ug of transfection-ready, dried plasmid DNA (reconstitute with 100 ul of water).

Reconstitution Method:

1. Centrifuge at 5,000xg for 5min.
2. Carefully open the tube and add 100ul of sterile water to dissolve the DNA.
3. Close the tube and incubate for 10 minutes at room temperature.
4. Briefly vortex the tube and then do a quick spin (less than 5000xg) to concentrate the liquid at the bottom.
5. Store the suspended plasmid at -20°C. The DNA is stable for at least one year from date of shipping when stored at -20°C.

RefSeq: [NM_001298.3](#)

RefSeq Size: 3486 bp

RefSeq ORF:	2085 bp
Locus ID:	1261
UniProt ID:	Q16281
Cytogenetics:	2q11.2
Domains:	cNMP, ion_trans
Protein Families:	Druggable Genome, Ion Channels: Cyclic nucleotide gated, Transmembrane
Protein Pathways:	Olfactory transduction
Gene Summary:	This gene encodes a member of the cyclic nucleotide-gated cation channel protein family which is required for normal vision and olfactory signal transduction. Mutations in this gene are associated with achromatopsia (rod monochromacy) and color blindness. Two alternatively spliced transcripts encoding different isoforms have been described. [provided by RefSeq, Jul 2008]