

## Product datasheet for **RG221062**

### **XRN1 (NM\_019001) Human Tagged ORF Clone**

#### Product data:

Product Type:	Expression Plasmids
Product Name:	XRN1 (NM_019001) Human Tagged ORF Clone
Tag:	TurboGFP
Symbol:	XRN1
Synonyms:	SEP1
Mammalian Cell Selection:	Neomycin
Vector:	pCMV6-AC-GFP (PS100010)
E. coli Selection:	Ampicillin (100 ug/mL)
ORF Nucleotide Sequence:	>RG221062 representing NM_019001 Red=Cloning site Blue=ORF Green=Tags(s)

TTTTGTAATACGACTCACTATAGGGCGGCCGGAATTCGTCGACTGGATCCGGTACCGAGGAGATCTGCC  
GCC**CGATCGCC**

ATGGGAGTCCCCAAGTTTTACAGATGGATCTCAGAGCGGTATCCCTGTCTCAGCGAAGTGGTAAAGAGC  
ATCAGATTCCTGAATTTGACAACCTGTACCTGGATATGAATGGAATTATACATCAGTGCTCCCATCTAA  
TGGTGATGATGTTCACTTTAGAATTTAGATGATAAAACTTTACTGATATTTTTACTACCTGGAGGTG  
TTGTTTCGCATTATTAACCCAGGAAAGTTCCTTTATGGCTGTAGATGGTGTGGCTCCTCGAGCAAAA  
TGAACCAGCAGCGTGGGAGGCGTTTTAGGTCAGCAAAGGAGGCAGAAGACAAAATTAAGGCAATAGA  
GAAGGGAGAACTCTTCTACAGAGGCCAGATTTGATTCCAAGTATCACACCAGGAAGTGAATTTATG  
GCCAGGTTACATGAACATCTGAAGTATTTGTAATATGAAAATTTCCACAGACAAGTCAATGGCAAGGAG  
TTACCATCTACTTCTCAGGCCATGAGACTCCTGGAGAAGGAGAGCATAAAATCATGGAATTTATCAGATC  
CGAGAAAGCAAAGCCAGATCATGATCCAACACCAGACTGTCTTTATGGTTTAGATGCTGACTTGATT  
ATGCTTGGATTAACAAGTCATGAGGCACATTTTCTCTCTTAAGAGAAGAAGTTCGATTTGGTGGCAAAA  
AAACACAACGGGTATGTGCTCCAGAAGAACTACATTTACCTTCTACACTTGTCTTTAATGAGAGAGTA  
TATTGACTATGAGTTTTAGTATTAAGAAAGAAAGTACATTTAAATATGATATTGAAAGGATAATAGAT  
GATTGGATTTTGGTGGGTTTCTTGGTAAATGATTTTATCCCTCATCTACCTCATTACATATTAATC  
ATGATGCACTGCCTCTTCTTTATGGAACATATGTTACCATCCTGCCAGAAGTGGGGTTATATTAATGA  
AAGTGGGCACCTCAACTTACCTCGATTTGAGAAATACCTTGTGAAACTATCAGATTTTATCGGGAGCAC  
TTCAGTGAAGTTTTTGTGGACCTAAAATGGTTTGAAGCAAAGTGGTAAACAAGTACCTCAATGAAGCAG  
CAGGTGTCGCAGCAGAAGAAGCCAGGAACAAGGAAAAGAAAAGTTAAAGGGCCAGGAAAATTTCTCT  
GTGTTGGACTGCTTTAGACAAAATGAAGGCGAAATGATAACTTCTAAGGATAATTTAGAAGATGAGACT  
GAAGATGATGACCTATTTGAAACTGAGTTTAGACAATATAAAGAACATATTACATGACGAAGATGGGG  
TTGACGTAGTATCTGATGACTTTCTGGCTGATCAAGCTGCATGTTATGTTGAGGCAATACAGTGGATTT  
GCACTATTACTATCATGGAGTTCAGTCTGGAGCTGGTATTATCCTTATCATTATGCACCTTTCTGCTCT



[View online »](#)

GATATACACAACATCAGTACACTCAAAATCCATTTTGAAGTAGGAAAACCTTTAAGCCATTTGAACAGC  
 TTCTTGCTGACTTCCAGCAGCCAGCAAAATTTACTTCTGCATGCTACCAGCATTGATGACCAATGA  
 AGACTACCAATTATAGAATATTACCCACCTGATTTTAAACTGACCTAAATGGGAAACAACAGGAATGG  
 GAAGCTGTGGTGTAAATCCCTTTTATTGATGAGAAGCGATTATTGGAAGCCATGGAGACATGAACCACT  
 CCCTCAAAAAGGAAGAGAGGAAAAGAAACCAACATAGTGAGTGCCTAATGTGCTGGTATGATAGAGACAC  
 AGAGTTTATCTATCCTTCTCCATGGCCAGAAAAGTTCCCTGCCATAGAACGATGTTGTACAAGGTATAAA  
 ATAATACCTTAGATGCTTGGCGTGTAGACATAAACAAAAACAAAATAACCAAGATTTGACCAGAAAAGCAT  
 TATATTTCTGTGATTTCTACTCTGAAACACATCAGACACAAAATTTTTTTTGAAGAAAAGTGGTGTCA  
 AGTATTCAGCAAAAGCAGTCGTGGAGAAAACATGATGTTGGAAATCTTAGTGGATGCAGAATCAGATGAA  
 CTTACCGTAGAAAATGTAGCTTCATCAGTGCTTGGAAAATCTGTCTTTGTTAATTGGCCTCACATTGAGG  
 AAGCTAGAGTCGTGGCTGTATCAGATGGAGAACTAAGTTTTACTTGGAGAACCCTCCAGGAACACAGAA  
 GCTTTTATCAGGAAGAACTGCCACCCTAAAGTGGTTCATCTTGGAGATAAAGAACAATCTAACTGG  
 GCAAAAAGAAAGTACAAGGAATTTCAGAACACTACCTGAGAAGAAAAGGAATAATAAATGAAACATCTG  
 CAGTTGTGTATGCTCAGTACTCACAGGTCGTAATATCAATAAATCAAAATGGTGAAGTTCGTCTAGA  
 GAAACAGTGGTCAAAACAAGTTGTCTTTTGTATCAAACTATTGTCAAGGACATCCGAGCTTTCGAC  
 TCCCGTTTCTCCAATATCAAAACATTGGATGATTTGTTTCTCTGAGAAGTATGGTCTTTATGCTGGGAA  
 CTCCTATTATGGCTGCACTGGAGAAGTTCAGGATTCAGGTGATGTGATTACAGAAGGTAGGATTCGTGT  
 GATTTTACGATTCATGTGAACCCAATCTTGATGCTTTAATACAGAACCAGCATAAATATTCTATAAAG  
 TACAACCCAGGATATGTGTTGGCCAGTCGCTTGGAGTGAAGTGGATACCTTGTTCAGGTTTACAGGAA  
 GTATTTTATTGGAAGAGGATCTAGGAGAAACCCTCATGGAGACCATAAAGCAATGTGGGTTTAAATCT  
 CAAATTCACAAGAAAAATGAGGAGGTACCTGGATATACTAAGAAAGTGGAAAGTGAATGGATGTATTCA  
 TCTGCAGCAGAACAACCTCTGGCAGAGTACTTAGAGAGAGCTCCAGAACTATTTAGTTATATGCCAAAA  
 ATAGCCAAAGAGGATGTGTTCTATGAAGATGACATTTGGCCTGGAGAAAATGAGAATGGTGTGAAAAAG  
 TCAAGAAATTATTACTTGGCTAAAAGGACATCCTGTGACTTTTACTCGTTCTTCTGTGATTTACAA  
 ATTCTGGATGCAGCTATTGTTGAGAAAATTGAGGAAGAAGTCGAAAAGTGAAGCAAGAAAGAAATAATA  
 AGAAGGTGCGAGTAACAGTGAACCCCATTTGCTATACAGACCTTTAGAACAGCAACATGGAGTCATTCC  
 TGATCGGGATGCAGAATTTGTCTTTTGGACCGTGTGTAATGTGAGAGAAAACCTCTCAGTTCAGTT  
 GGCCTTCGAGGCACCATCATAGGAATAAAAGGAGCTAATAGAGAAGCCGATGACTATTTGAAGTATTAT  
 TTGATGAAGAATTTCTGGAGGGTTAACAATAAGATGCTCACCTGGTAGAGGTTATCGACTGCCAACAG  
 TGCTTGGTGAACCTTTCTCATGGGAGTCGCTCTGAAACTGGAATCAGAAGTTGACAGCCATCGTAAAA  
 CCACAACCAGCTGTACATCAACATAGCTCAAGTTCATCAGTTTCTCTGGGCATTTGGGAGCCCTCAACC  
 ATTCCTCAATCACTTTTTGTTCTACTCAAGTACCTACTAAAGATGATGATGAATTCTGCAACATTTG  
 GCAGTCTTACAGGGATCTGAAAAGATGCAATACTTTACGCCAATATACAAGAGAAGGGTGCAGTTCTA  
 CCTCAAGAAAATAAGCCAAGTAAATCAACATCATAAATCTGGCTTTAATGACAACAGTGTTAAATATCAGC  
 AAAGAAAACATGACCCTCACAGAAAATTTAAAGAAGAGTGAAGAGTCTAAAGCTGAGTGTGGTCCCA  
 AAAATGTCCAATAAGCAGCCTAACTCTGGAAATGAGAAGTCTTTAGCATCTTTGAATATCTCCAAAGAA  
 AATGAAGTACAGTCATCTCATGTTGGGAGCCTCCAAGTGAAGAGCATTGTGACCACAGTCATTGGCCA  
 TGGGAACACGGATGCTTAAAGAAATTTAAAAATGATGGCTCTAACACTGTGGACCATAAGAATGAAAT  
 CAAACAGATTGCTAATGAAATCCCTGTTTCTCTAACAGAAGAGATGAATATGGATTACCCTCTCAGCCT  
 AAACAAAATAAGAAATTAGCATCTTATATGAACAAGCCTCACAGTGTAAATGAGTACCATAATGTTCAGT  
 CTATGGACAATATGTGTTGGCCTGCCCCAGCCAGATCCCTCTGTATCCACACCAGTAACTGAACTTTC  
 TCGAATTTGTTCCCTTGTGGAATGCCACAACCTGATTTCTCTTTTTTAGGATGCCACAGACAATGACC  
 GTTTGCCAAGTAAAATTAATAAGCTTACTGGTACATGGGCCACAGTGCCACTCTGAAAATGAAGCCA  
 AAGAGAAAGCTGCACTTTTTGCTTTACAACAGTTGGGCTCCTTAGGCATGAATTTCCCTTTGCCCTCACA  
 AGTATTTGCAAAATATCCTTCAGCTGTACCACCTGGAACCATTCTCCAGCCTTTCCCCACCTACTGGC  
 TGGGATCACTATGGAAGCAACTATGCATTGGGGCAGCTAATAAATGCCTTCGTCGTCTCATCTCTTTG  
 GCTCAATGCCATGGGACCATCGGTGCCAGTTCCTGGGAAGCCCTCCATCATACTTTATATTCTGGGAC  
 CATGCCCATGGCTGGGGGAATACCAGGGGGTGTGCACAATCAGTTTATACCTCTGCAGGTTACTAAAAAA  
 AGGGTTGCAAAACAAAAGAACTTTGAGAATAAGGAAGCCAGAGTTCTCAAGCCACTCCAGTTCCAGACTA  
 GCCAGCCAGATTCTTCAACATTGTCAAAGTAAAGTCCACGGGAGAGCTCATCAGCTTCTTTGAAGTCCCTC  
 TCCGATTGCTCAACCTGCATCTTCTTTCAAGTTGAAACTGCCTCTCAAGGCCATAGTATATCTCACCAT  
 AAGTCAACACCAATCTTCTTCAAGAAGAAAATCAAGAAAACCTGGTGTAAATTTTGGTGTCTTCTAAAC

CTTCTGAG

ACGCGTACGCGGCCGCTCGAG - GFP Tag - GTTTAA

**Protein Sequence:**

>RG221062 representing NM\_019001

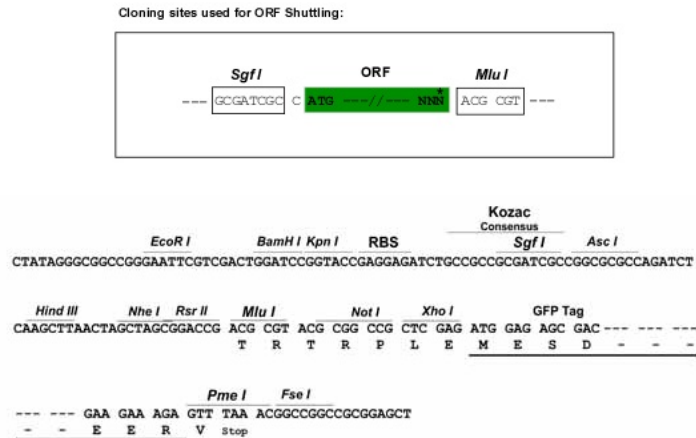
Red=Cloning site Green=Tags(s)

MGVPKFYRWISERYPCLSEVVKEHQIPEFDNLYLDMNGIIHQCSHPNGDDVHFRI SDDKIFTDIFHYLEV  
 LFRIIKPRKVFVMAVDGVAPRAKMNQQRGRRFRSAKEAEDKIKKAIEKGETLPTEARFDSNCITPGTEFM  
 ARLHEHLKYFVNMKISTDKSWQGVTIYFSGHETPGEHEHKIMEFIRSEKAKPDHDPNTRHCLYGLDADLI  
 MLGLTSHEAHFSLLREEVRFGGKKTQRVCAPEETTFHLLHLSLMREYIDYEF SVLKEKITFKYDIERIID  
 DWILMGFLVGNDFIPHLPHLHINHDALPLL YGTYYTILPELGGYINESGHLNLPREFEYLVKLSDFDREH  
 FSEVFDLKWFEKVGNGKYLNEAAGVAAEEARNYKEKKLKGQENSLCWTALDKNEGEMITSKDNLEDET  
 EDDDLFETEFRQYKRTYYMTKMGVDVVSDDFLADQAACYVQAIQWILHYHYHGVSWSWYYPHYAPFLS  
 DIHNISTLKIHFELGKPFKPFQQLLAVLPAASKNLLPACYQHLMTNEDSPIIEYYPDFKDLNGKQQEW  
 EAVVLIPFIDEKRLLEAMETCNHSLKKEERKRQHSECLMCWYDRDTEFIYPSWPPEKFPAIERCCTRYK  
 IISLDAWRVDINKNKITRIDQKALYFCGFPTLKHIRHKFFLKKSGVQVFQSSRGENMMLEILVDAESDE  
 LTVENAVSSVLGKSVFNWPHIEEARVAVSDGETKFYLEEPPGTQKLYSGRTAPPSKVHLGDKEQSNW  
 AKEVQGISSEHYLRKGIINETSAVVYAQLL TGRKYQINQNGEVRLKQWSKQVVPFVYQTI VKDIRAFD  
 SRF SNIKTLDDL FPLRSMV FMLGTPYYGCTGEVQDSGDVITEGRIRVIF SIPCEPNLDALIQNHKYSIK  
 YNPGYVLASRLGVSGYL VSRFTGSIFIGRGSRRNPHGDHKANVGLNLFKNKNEEVPGYTKKVGSEWMS  
 SAAEQLLAEYLERAPELFSYIAKNSQEDVFYEDDIWPGENENGAEKVQEIITWLKGHPVSTLSRSSCDLQ  
 ILDAAIVEKIEEEVEKCKQRKNNKVRVTVKPHLLYRPLEQQHGVIPDRDAEFCLFDRVVNVRENFSVPV  
 GLRGTIIGIKGANREADVLFEVLFDEEFPGLTIRCSPPGRGYRLPTSALVNL SHGSRSETGNQKLTAIVK  
 PQPAVHQHSSSSSVSSGHLGALNHSPQSLFVPTQVPTKDDDFECNIWQSLQGSGKMQYFQPTIQEKGA VL  
 PQEISQVNQHHSKSGFNDNSVKYQQRKHDPHRKFKEECKSPKAECWSQKMSNKQPNNGIENFLASLNI SKE  
 NEVQSSHHGEPPEEHLSPQSFAMGTRMLKEILKIDGSNTVDHKNEIKQIANEIPVSSNRRDEYGLPSQP  
 KQNKKLASYMNKPHSANEYHNVQSMNMCWPAPSQIPPVSTPVTLSRICSLVGMPQPDFSFFRMPQTMT  
 VCQVKLSNGLLVHGPQCHSENAKEKAALFALQQLGSLGMNFPPLPSQVFANYPSAVPPGTIPPAFPPTG  
 WDHYGSNYALGAANIMPSSSHLFGSMPWGSPVVPKPFHHTLYSGTMPMAGGIPGGVHNQFIPLQVTKK  
 RVANKKNFENKEAQSSQATPVQTSQPDSNIVKVS PRESSASLKSPIAQPASSFQVETASQGHSHH  
 KSTPISSRRKSRKLA VNFVSKPSE

TRTRPLE - GFP Tag - V

**Restriction Sites:**

Sgfl-MluI

**Cloning Scheme:**


**ACCN:** NM\_019001

**ORF Size:** 5118 bp

**OTI Disclaimer:** The molecular sequence of this clone aligns with the gene accession number as a point of reference only. However, individual transcript sequences of the same gene can differ through naturally occurring variations (e.g. polymorphisms), each with its own valid existence. This clone is substantially in agreement with the reference, but a complete review of all prevailing variants is recommended prior to use. [More info](#)

**OTI Annotation:** This clone was engineered to express the complete ORF with an expression tag. Expression varies depending on the nature of the gene.

**Components:** The ORF clone is ion-exchange column purified and shipped in a 2D barcoded Matrix tube containing 10ug of transfection-ready, dried plasmid DNA (reconstitute with 100 ul of water).

**Reconstitution Method:**

1. Centrifuge at 5,000xg for 5min.
2. Carefully open the tube and add 100ul of sterile water to dissolve the DNA.
3. Close the tube and incubate for 10 minutes at room temperature.
4. Briefly vortex the tube and then do a quick spin (less than 5000xg) to concentrate the liquid at the bottom.
5. Store the suspended plasmid at -20°C. The DNA is stable for at least one year from date of shipping when stored at -20°C.

**RefSeq:** [NM\\_019001.2](#), [NP\\_061874.2](#)

**RefSeq Size:** 10123 bp

**RefSeq ORF:** 5121 bp

**Locus ID:** 54464

**UniProt ID:** [Q8IZH2](#)

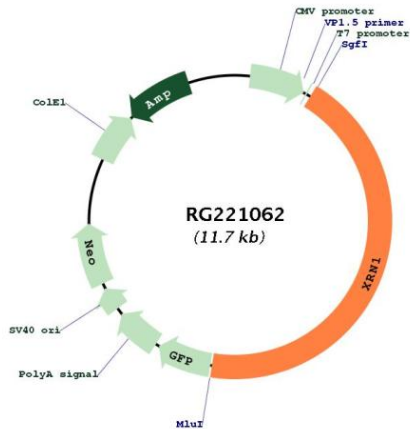
**Cytogenetics:** 3q23

**Protein Pathways:**

RNA degradation

**Gene Summary:**

This gene encodes a member of the 5'-3' exonuclease family. The encoded protein may be involved in replication-dependent histone mRNA degradation, and interacts directly with the enhancer of mRNA-decapping protein 4. In addition to mRNA metabolism, a similar protein in yeast has been implicated in a variety of nuclear and cytoplasmic functions, including homologous recombination, meiosis, telomere maintenance, and microtubule assembly. Mutations in this gene are associated with osteosarcoma, suggesting that the encoded protein may also play a role in bone formation. Alternative splicing results in multiple transcript variants. [provided by RefSeq, Sep 2013]

**Product images:**


Circular map for RG221062