

## Product datasheet for **RG221028**

### **NRP2 (NM\_201279) Human Tagged ORF Clone**

#### **Product data:**

Product Type:	Expression Plasmids
Product Name:	NRP2 (NM_201279) Human Tagged ORF Clone
Tag:	TurboGFP
Symbol:	NRP2
Synonyms:	NP2; NPN2; PRO2714; VEGF165R2
Mammalian Cell Selection:	Neomycin
Vector:	pCMV6-AC-GFP (PS100010)
E. coli Selection:	Ampicillin (100 ug/mL)



[View online »](#)

**ORF Nucleotide Sequence:**

>RG221028 representing NM\_201279  
 Red=Cloning site Blue=ORF Green=Tags(s)

TTTTGTAATACGACTCACTATAGGGCGGCCGGGAATTCGTCGACTGGATCCGGTACCGAGGAGATCTGCC  
 GCC**CGGATCGCC**

ATGGATATGTTTCTCTCACCTGGGTTTTCTTAGCCCTCTACTTTTCAAGACACCAAGTGAGAGGCCAAC  
 CAGACCCACCGTGCAGAGTCTGTTGAATTCCAAAGATGCTGGCTATATCACCTCTCCCGTTACCCCA  
 GGACTACCCCTCCACCAGAAGTGCAGTGGATTGTTTACGCCCCGAACCAACCAAGAAGATTGCCTC  
 AACTTCAACCCTCACTTTGAAATCGAGAAGCAGACTGCAAGTATGACTTTATCGAGATTCGGGATGGG  
 ACAGTGAATCCGCAGACCTCCTGGGCAAACTGTGGAAACATCGCCCCGCCACCATCATCTCCTCGGG  
 CTCATGCTCTACATCAAGTTCACCTCCGACTACGCCCGCAGGGGGCAGGCTTCTCTGCGCTACGAG  
 ATCTTCAAGACAGGCTCTGAAGATTGCTCAAAAACTTACAAGCCCCAACGGGACCATCGAATCTCCTG  
 GTTTTCTGAGAAGTATCCACACAACCTGGACTGCACCTTACCATCCTGGCCAAACCAAGATGGAGAT  
 CATCCTGCAGTTCCTGATCTTTGACCTGGAGCATGACCCTTTCAGGTGGGAGAGGGGACTGCAAGTAC  
 GATTGGCTGGACATCTGGGATGGCATTCCACATGTTGGCCCCCTGATTGGCAAGTACTGTGGGACAAAA  
 CACCCTCTGAACCTCGTTTCATCGACGGGATCCTCTCCCTGACCTTTCACACGGACATGGCGGTGGCCAA  
 GGATGGCTTCTCTGCGGTTACTACCTGGTCCACCAAGAGCCACTAGAGAAGTTTTCAGTGAATGTTCT  
 CTGGGCATGGAGTCTGGCCGGATTGCTAATGAACAGATCAGTGCCTCATCTACCTACTCTGATGGGAGGT  
 GGACCCCTCAACAAAGCCGGCTCCATGGTGTGACAATGGCTGGACCCCAACTTGGATTCCAACAAGGA  
 GTATCTCCAGGTGGACCTGCGCTTTTTAACCATGCTCACGGCCATCGAACACAGGGAGCGATTTCCAGG  
 GAAACACAGAATGGTACTATGTCAAATCTACAAGCTGGAAGTCAGACTAATGGAGAGGACTGGATGG  
 TGTACCGCATGGCAAAAACACAAGGTATTTCAAGCAACAACGATGCAACTGAGTGGTCTGAAACAA  
 GCTCCACGCTCCACTGCTGACAAGGTTTGTAGAAATCCGCCCTCAGACCTGGCACTCAGGTATCGCCCTC  
 CGGCTGGAGCTCTTCGGCTGCCGGTACAGATGCTCCCTGCTCCAACATGCTGGGGATGCTCTCAGGCC  
 TCATTGCAGACTCCAGATCTCCGCTCTTCCACCCAGGAATACCTCTGGAGCCCCAGTGCAGCCCGCT  
 GGTGAGCAGCCGCTCGGGCTGGTTCCTCGAATCCCTCAGGCCAGCCCGGTGAGGAGTGGCTTCAGGTA  
 GATCTGGGAACACCAAGACAGTGAAGGTGTCATCATCCAGGGAGCCCGCGGAGGAGACAGTATCACTG  
 CTGTGGAAGCCAGAGCATTGTGCGCAAGTCAAAGTCTCTACAGCCTAAACGGCAAGGACTGGGAATA  
 CATTGAGGACCCAGGACCCAGCAGCCAAAGCTGTTGAAAGGAAACATGCACTATGACACCCCTGACATC  
 CGAAGGTTTGACCCATTCCGGCACAGTATGTGCGGGTATACCCGGAGAGGTGGTCCGCCGGGGATTG  
 GGATGCGGCTGGAGGTGCTGGGCTGTGACTGGACAGACTCCAAGCCACGGTAGAGACGCTGGGACCCAC  
 TGTGAAGAGCGAAGAGACAACCACCCCTACCCACCGAAGAGGAGGCCACAGAGTGTGGGGAGAACTGC  
 AGCTTTGAGGATGACAAAGATTTGCAGCTCCCTTCGGGATTCAATTGCAACTTCGATTTCTCGAGGAGC  
 CCTGTGGTTGGATGTATGACCATGCCAAGTGGCTCCGGACCACCTGGGCCAGCAGCTCCAGCCAAACGA  
 CCGGACGTTTCCAGATGACAGGAATTTCTTGGGCTGCAGAGTGCAGCCAGAGAGAGGGCCAGTATGCC  
 CGGCTCATCAGCCCCCTGTCCACCTGCCCCGAAGCCCGGTGTGCATGGAGTTCAGTACCAGGCCACGG  
 GCGGCCCGGGGTGGCGCTGCAGGTGGTGGGAAAGCCAGCCAGGAGAGCAAGTTGCTGTGGTTCATCCG  
 TGAGGACCAGGGCGGCGAGTGAAGCACGGGCGGATCATCCTGCCAGCTACGACATGGAGTACCAGATT  
 GTTTTCGAGGGAGTGATAGGGAAAAGGACGTTCCGGAGAGATTGCCATTGATGACATTCGATAAGCACTG  
 ATGTCCCACTGGAGAAGTGCATGGAACCATCTCGGCTTTTGCAGATGAATACGAGGTGGACTGGAGCAA  
 TTCTTCTCTGCAACCTCAGGTCTGGCGCCCCCTCGACCCGACAAAGAAAAGAGCTGGCTGTACACCCTG  
 GATCCCATCCTCATCACCATCATCGCCATGAGCTCACTGGGCGTCTCTCTGGGGCCACCTGTGCAGGCC  
 TCCTGCTCTACTGCACCTGTTCTACTCGGCTGAGCTCCCGAAGCTGCACCACACTGGAGAATAACAA  
 CTTGAGCTCTACGATGGCCTTAAGCACAAAGTCAAGTGAACCACAAAAGTGTCTCCGAGGCA

**ACGCGTACGCGGCCGCTCGAG - GFP Tag - GTTTAA**

**Protein Sequence:** >RG221028 representing NM\_201279  
 Red=Cloning site Green=Tags(s)

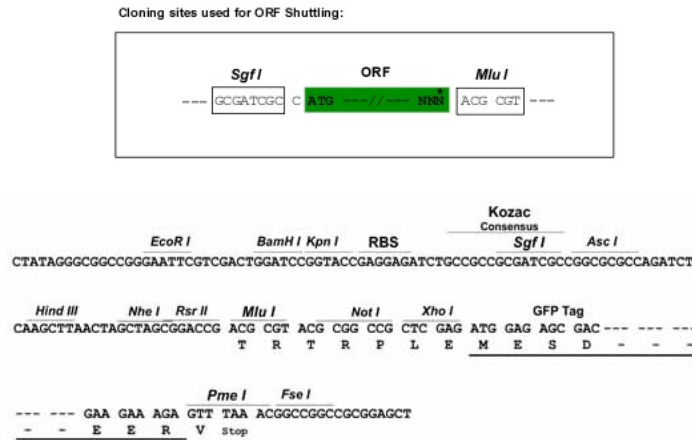
MDMFPLTWVFLALYFSRHQVRGQDPDPPCGRLNSKDAGYITSPGYPDYPSHQNCEWIVYAPEPNQKIVL  
 NFNPHFEIEKHDCYDFIEIRDGSEADLLGKHCGNIAPPTIISSGSMLYIKFTSDYARQGAGFSRLRYE  
 IFKTGSEDCSKNFTSPNGTIESPGFPEKYPHNLDCFTTILAKPKMEIILQFLIFDLEHDPQVGEQDCKY  
 DWLDIWDGIPHVGPLIGKYCGTKTPSELRSSTGILSLTFHTDMAVAKDGFSAARYLVHQEPLNFQCNVP  
 LGMESGRIANEQISASSTYSDGRWTPQQSRLHGDDNGWTPNLDNSKEYLQVDLRFMLTATQGAISR  
 ETQNGYVYKSYKLEVSTNGEDWMVYRHGKNHKVFQANNDATEVVLNKLHAPLLTRFVIRPQTWHSIAL  
 RLELFGCRVTDAPCSNMLGMLSGLIADSIASSTQEYLWSPAARLVSSRSGWFRIPQAQPGEELQV  
 DLGTPKTVKGVIIQGARGGDSITAVEARAFVRKFKVSYSLNGKDWEYIQDPRTQQPKLFEGNMHYDTPDI  
 RRFDPIPAQYVRVYPERWSPAGIGMRLEVLGCDWTDKPTVETLGPVKSEETTPYPTTEEEATECGENC  
 SFEDDKDLQLPSGFNCNDFLEPCGMYDHAKWLRTTWASSSPNDRTFPDDRNLRLQSDSQREGQYA  
 RLISPPVHLPRSPVCMFQYQATGGRGVALQVVREASQESKLLWVIREQGGGEWKHGRIILPSYDMEYQI  
 VFEGVIGKGRSGEIAIDDIRISTDVPLENCMEPISAFADEYEVDSNSSSATSGSGAPSTDEKESWLYTL  
 DPILITIIAMSSLGVLLGATCAGLLLYCTCSYGLSSRSCTTLENYNFELYDGLKHKVKMNHQKCCSEA

TRTRPLE - GFP Tag - V

**Restriction Sites:**

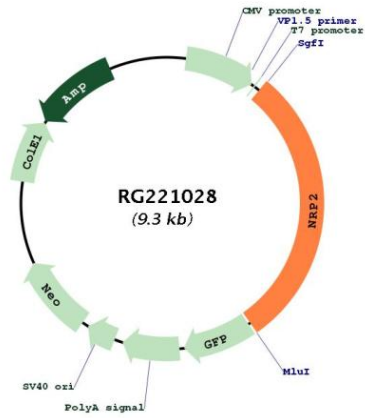
SgfI-MluI

**Cloning Scheme:**



<b>ACCN:</b>	NM_201279
<b>ORF Size:</b>	2727 bp
<b>OTI Disclaimer:</b>	The molecular sequence of this clone aligns with the gene accession number as a point of reference only. However, individual transcript sequences of the same gene can differ through naturally occurring variations (e.g. polymorphisms), each with its own valid existence. This clone is substantially in agreement with the reference, but a complete review of all prevailing variants is recommended prior to use. <a href="#">More info</a>
<b>OTI Annotation:</b>	This clone was engineered to express the complete ORF with an expression tag. Expression varies depending on the nature of the gene.
<b>Components:</b>	The ORF clone is ion-exchange column purified and shipped in a 2D barcoded Matrix tube containing 10ug of transfection-ready, dried plasmid DNA (reconstitute with 100 ul of water).
<b>Reconstitution Method:</b>	<ol style="list-style-type: none"><li>1. Centrifuge at 5,000xg for 5min.</li><li>2. Carefully open the tube and add 100ul of sterile water to dissolve the DNA.</li><li>3. Close the tube and incubate for 10 minutes at room temperature.</li><li>4. Briefly vortex the tube and then do a quick spin (less than 5000xg) to concentrate the liquid at the bottom.</li><li>5. Store the suspended plasmid at -20°C. The DNA is stable for at least one year from date of shipping when stored at -20°C.</li></ol>
<b>RefSeq:</b>	<a href="#">NM_201279.1</a> , <a href="#">NP_958436.1</a>
<b>RefSeq Size:</b>	6605 bp
<b>RefSeq ORF:</b>	2730 bp
<b>Locus ID:</b>	8828
<b>UniProt ID:</b>	<a href="#">O60462</a>
<b>Cytogenetics:</b>	2q33.3
<b>Protein Families:</b>	Druggable Genome, Transmembrane
<b>Gene Summary:</b>	This gene encodes a member of the neuropilin family of receptor proteins. The encoded transmembrane protein binds to SEMA3C protein {sema domain, immunoglobulin domain (Ig), short basic domain, secreted, (semaphorin) 3C} and SEMA3F protein {sema domain, immunoglobulin domain (Ig), short basic domain, secreted, (semaphorin) 3F}, and interacts with vascular endothelial growth factor (VEGF). This protein may play a role in cardiovascular development, axon guidance, and tumorigenesis. Multiple transcript variants encoding distinct isoforms have been identified for this gene. [provided by RefSeq, Jul 2008]

Product images:



Circular map for RG221028