

Product datasheet for **RG221026**

DEPDC5 (NM_014662) Human Tagged ORF Clone

Product data:

Product Type:	Expression Plasmids
Product Name:	DEPDC5 (NM_014662) Human Tagged ORF Clone
Tag:	TurboGFP
Symbol:	DEPDC5
Synonyms:	DEP.5; FFEVF; FFEVF1
Mammalian Cell Selection:	Neomycin
Vector:	pCMV6-AC-GFP (PS100010)
E. coli Selection:	Ampicillin (100 ug/mL)
ORF Nucleotide Sequence:	>RG221026 representing NM_014662 Red=Cloning site Blue=ORF Green=Tags(s)

TTTTGTAATACGACTCACTATAGGGCGGCCGGAATTCGTCGACTGGATCCGGTACCGAGGAGATCTGCC
GCC**CGATCGCC**

ATGAGAACAACAAAGGTCTACAACTCGTCATCCACAAGAAGGGCTTTGGGGCAGTGATGATGAGCTAG
TTGTGAACCCCAAAGTGTCCCTCACATCAAGCTTGGAGACATTGTAGAGATTGCACACCCCAACGATGA
ATACAGCCCTCTGCTTTTGCAGGTCAAGTCTCTTAAGGAAGATTACAGAAGGAACTATCAGTGTGGAC
CAGACTGTGACTCAAGTGTCCGGCTGAGACCTTATCAGGATGTCTATGTTAATGTCGTAGACCCTAAGG
ATGTGACCCTTGACCTAGTGAATTAACTTTTAAGGATCAGTATATTGGCCGTGGGGATATGTGGCGACT
AAAGAAAAGTTTGGTCAGCACATGTGCCTATATCACCCAGAAGGTGGAGTTTGTGGCATCAGAGCACAG
GCTGGTGAAGTGTGGTTAAGAATGAGAAGGTCATGTGTGGCTACATCAGTGAAGATACCGGGTGGTGT
TTCTGTTTACGTCGGCTATGGTTTACATATTTATTTCAGATGAGCTGTGAAATGTGGGATTTTGATATTTA
TGGGGATTTGTATTTGAGAAAGCTGTGAATGGTTTCTTGTGATCTATTTACCAAGTGGAAAGGAGAAG
AACTGTAGTCATGAAGTGACAGTGGTCTGTTTCTAGAAGTTTCTATGATGCAAAATCTGTTGATGAAT
TTCCTGAAATAAACCGAGCCTCAATTCGACAGGATCACAAAGGGGAGATTCTATGAAGACTTTTACAAAGT
GGTGGTGCAGAATGAGAGAAGAGAAGAATGGACTTCACCTCTCGTAACCATTAACCAACTCTTATCCAG
TATCCAGTGTGGTGGCAGTGGAAACAGGCAGAGGGCTTTTCTCAAGGAGATAATTCTACCTCAGCACAAG
GAAACTACCTGGAGGCCATCAATCTGTCAATTCAATGTGTTTGTAAAGCACTACATCAACCGCAACTTTGA
CCGAAGTGGGCAGATGTCAAGTGGTGTACACGCCGGGGTGGTGTCTTTGAAGTGGACCGCCTACTCATG
ATCCTGACCAAGCAGCGGATGATAGATAATGGAATTGGTGTGGATTTGGTGTGCATGGGAGAGCAACCGT
TACATGCTGTCCATTGTTCAAGCTCCATAATCGGAGTGTCTCCCGTGATTCTCGTCTGGGCGATGACTA
TAATATCCCTCACTGGATAAACACAGTTTCTACACATCCAAAAGCCAGCTCTTTTGAATAGTTTCACC
CCACGAATAAACTGGCAGGAAAGAAGCCCGCTCTGAGAAAGCAAAAAATGGCCGTGATACATCTCTCG
GGAGTCCAAAAGAATCTGAGAACGCCCTCCCATCCAAGTAGATTATGACGCCTATGACGCTCAAGTGT
CAGGCTGCCCGGCCATCCCGGGCCAGTGCCTACCACCTGCAGATCTGTGCGAGAGCGAGAGAGTAC



View online »

AGTCGAAAGAGTGCCAGCTCCTGTGATGTTTCATCCAGCCCTTCCTACCAAGCCGCACACTGCCACTG
AGGAAGTGAGGAGCCAGGCTTCTGACGACAGCTCCCTAGGCAAGAGTGCCAAATCCTGATGATCCCACA
CCCCACCTGCACCAGTATGAAGTCAGCAGCTCCTTGGGATACACCAGCACTCGAGATGTCTGGAGAAC
ATGATGGAGCCACCACAGCGAGACTCCAGTGCACCAGGGAGGTTTACGTTGGCAGTGCAGAATCCATGC
TGCATGTTGACCTGGTGGATACACGCCCCAGAGAGCACTGATTAACCCCTTCGCTCCCTCTCGGATGCC
CATGAAGCTTACGTCCAACAGAAGGCGCTGGATGCACACTTTTCTGTGGGGCCATCCGGAGAAGCCATC
CAGATCCACCACCAGACCCGACAGAATATGGCGGAGCTACAAGGCAGCGGGCAGAGGGATCCAACACTC
CCTCTGCAGAGCTGCTGGAGTTAGCATATCATGAAGCTGCTGGAAGGCACAGCAATTCGCCAGCCTGG
TGACGGCATGTCTTCTTGAACCTCAGTGGAAACAGAGGAGCTTTCTGTCCGCCTGCTTAGCAACAGTGGT
GCAGGTATGAATCCTAGGACCCAGAATAAGGATTCTCTAGAGGACAGTGTCTTCTACTCTCCAGACCCAA
TGCCAGGCTTCTGTTGCACAGTTGGAGTGGACTGGAACTCTCTACTACTCCGGCGTGCCTCCCCCTTAC
CACCGACTACTTCCCTGACCGCCAGGGCTGCAGAATGACTACACAGAGGGCTGTATGATCTCCTTCCA
GAAGCAGACATCGACAGGAGGGACGAAGATGGTGTGCAGATGACAGCCAGCAGGATTTTGAAGAGTTTA
TTTGCCAAAGTCTCATGCAGGGTACCAAATCATAGTGCAGCCCAAGACACAGAAACCAATCCTGTGT
CCCGCCCCGCTGAGCAGTAGCCACTCTATAGCCGAGGCCTTGTGTCCGAAACCGCCCTGAGGAGGAG
GACCAGTATTGGCTGAGTATGGGCAGAAGTTCACAAAGTGACGCTGAAGGATAAGATGATCACAGTGA
CGCGATACCTTCCAAGTATCCTTATGAATCTGCCAGATCCACTACACCTACAGCCTCTGTCTTCCCA
CTCAGACTCAGAGTTCGTCTCCTGCTGGGTGGAATTCTCCACGAACGGCTGGAGGAGTACAAGTGGAA
TACTTAGATCAGTATATCTGTTCTGCCGCTCTGAAGACTTCAGCTTAATTGAGTCCCTGAAGTTCTGGA
GGACCCGCTTCTGTCTGCTGCCAGCCTGTGTACCGCCACCAAGCGCATCACGGAGGGGGAGGCCACTG
CGACATCTATGGGACAGGCCCGTGCAGACGAGGACGAGTGGCAACTCCTGGATGGTTTTGTCCGCTTT
GTGGAGGGCTTGAATCGCATTGCGAGGCGGCATCGCTCGGATCGCATGATGCGGAAAGGGACCGCATGA
AAGGCTTGCAGATGACTGGGCCATTTCCAGCATTTCTGTGAGTCAACTGCACCCCAAGTGGGGAAGAA
GGGAACCTCAGCTCTCTGTGCCCTGTTGGAGATGGAGGCCAGTCAAGAGTGCCTGGGAGAACAGCAGGCA
GCTGTGCATGGTGGGAAGAGCTCCGCCAGTCAAGCCGAGAGCAGCAGCGTTGCCATGACTCCACCTACA
TGGACAGCCACGAAAGGTATCTGTGGACCAAACAGCCACTCCTATGTTGGACGGCACCAGTTTGGGCAT
ATGCACAGGCCAATCCATGGACAGAGGCAACAGCCAGACCTTTGGGAACTCCAGAACATAGGAGAACAG
GGCTACTCTCCACAACTCCAGTGACAGCAGCTCTCAGCAGCTGGTGGCAAGCTCCTTGACCTCATCT
CTACCCTGACAGAGATCCTGGAAGCCATGAAGCACCCCTCGACAGGAGTCCAGTGTCTCTGAACAGAA
GGGCTCTCACCGTACTGCTTCATCAGCGCGGAGGTGGTACACTGGTGGTGAACCAGTGGAGGGGATC
CAGACACAGGCGATGGCCATTGACATCATGCAGAAAATGCTGGAAGAGCAGCTCATCACACATGCATCTG
GGGAAGCCTGGCGGACCTTCATCTACGGCTTCTATTTCTACAAGATAGTAACGGACAAAGAGCCGACCG
AGTGGCCATGCAGCAGCCCGCCACCACCTGGCACACAGCAGGAGTGGACGACTTCGCCAGCTTCCAGCGC
AAGTGGTTTGGAGTGGCCTTTGTGGCAGAAGAGCTCGTGCAGTCTGAGATTCTGCCTTTCTCTGCCCT
GGCTGCCAGCCGGCCAGCCTCCTATGCAAGTAGGCACAGCTCCTTAGCCGAAGTTTGGAGGACGGAG
CCAGGGCGGACACTTTTAGTGCCTGTCCCAGAGCAGAGGACTGTGACCCTGGATGTTGACGTGAAC
AACCACAGACCCGGCTGGAGTGGTGCAGCTGTTATTACCATGGCAACTTTTCTGAAATGCAGCCTTTG
AGATCAAGCTGCACTGGATGGCGGTGACCGCAGCAGTACTTTCGAGATGGTCCAAGGTTGGCATCGGAA
AGCCACCTCCTGTGGCTTCTTGTAGTCCCAGTTTTGGAGGGCCTTTTGCAGTCCCAAGTACCTGTAT
GGCGACCCCTTCTGTGCCAGCTTTCATCCCACTCAACATCAGCTGCTTGTCAAGGAGGCGAGCGAGC
ACCTGTTTGTAGCTTTGAACCCGAAACGTAAGTGGATCGAATGCACCTTTCAGGAAGCCATTGCACA
CAGTTTTGGTTTTGTACAAGATAAATATTGCTCTGCTTTTAACTTCCCTGCTGAGAACAAGCCTCAG
TATATCCAGTTACAGGAACAGTGTCTGAGCTGCCCTACTCCAAGCGCAAGTTCTCAGGGCAGCAGC
GGCGGGCGGAACTCCACCAGCTCCACCAACCAGAACATGTTCTGCGAGGAGCGGGTGGCTACAAGT
GGCCTACAACACCATGCTCACCAAAACATGGCGCTCCAGCGCCACAGGGGATGAAAAGTTTGTGATCGG
CTGCTGAAGGACTTACGGACTTCTGCATCAACCGTGACAACCGCTGGTACGTTCTGGACAAGTTGCC
TGGAGAAGATGCATGCCAGTGCCTCG

ACGCGTACGCGGCCGCTCGAG - GFP Tag - GTTTAA

Protein Sequence: >RG221026 representing NM_014662
 Red=Cloning site Green=Tags(s)

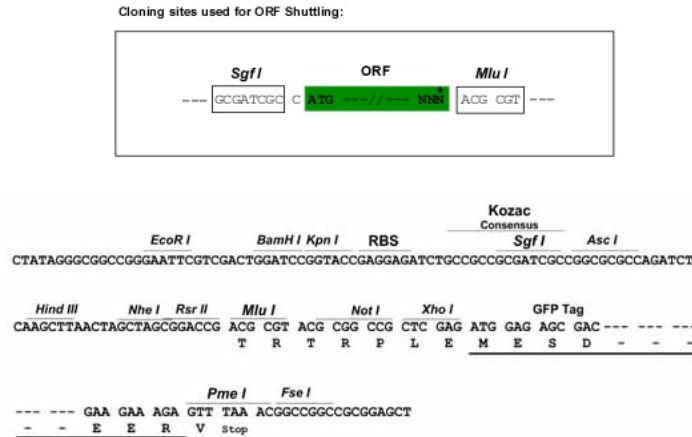
```

MRTTKVYKLVIIHKKGFGGSDDELVVNPKVFPHIKLGDIVIAHPNDEYSPLLLQVKSLKEDLQKETISVD
QTVTQVFLRPYQDVYVNVVDPKDVTLDELVELTFKDQYIGRDMWRLKSLVSTCAYITQKVEFAGIRAQ
AGELWVKNEKVMCGYISEDTRVFRSTSAMVYIFIQMSCEMWFDIYGDLYFEKAVNGFLADLFTKWKEK
NCSHEVTVVLFSRTFYDAKSVDEFPEINRASIRQDHKGRFYEDFYKVVVQNERREWTSLLVTIKKLFIQ
YPVLVRLEQAEGFPQGDNSTSAQGNYLEAINLSFNVFDKHYINRNFDRTGQMSVVIPTPGVGFVVDRLLM
ILTKQRMIDNIGVDLVCMEQPLHAVPLFKLHNRSAPRDSRLGDDYNIPHWINHSFYTSKSQLFCNSFT
PRIKLAGKPPASEKAKNGRDTSLGSPKESENALPIQVDYDAYDAQVFRPLPGPSRAQCLTTCRSVRERESH
SRKSASSCDVSSSPSLPRTLPTEEVRSQASDDSSLGKSANILMIPPHLHQYEVSSSLGYTSTRDVLEN
MMEPPQRDSSAPGRFHVGSAESMLHVRPGGYTPQRALINPFAPSRMPMKLTSNRRRWMHTFPVGPGEAI
QIHHQTRQNMAELQSGQRDPHTSSAELLELAYHEAAGRHSNSRQPGDGMFLNFSGTEELSVGLLSNSG
AGMNPRTQNKDSLEDSVSTSPDPMPGFCCTVGVDWKSLLTPACLPLTTDYFPDRQGLQNDYTEGCYDLLP
EADIDRRDEDGVQMTAQQVFEFICQRLMQGYQIIVQPKTQKPNPVPVPLSSSPLYSRGLVSRNRPEEE
DQYWLSMGRTFHKVTLKDKMITVTRYLPKYYPYESAQIHYTYSLCPSHSDSEFVSCWVEFSHERLEEYKWN
YLDQYICSAGEDFSLIESLKFWRTRFLLLPACTATKRITGEAHCIDIYGRPRADEDEWQLLDGFVRF
VEGLNRIRRRHRSDRMMRGTAMKGLQMTGPISTHSLESTAPPVGGKGTSALESALLEMEASQKCLGEQQA
AVHGGKSSAQSAESSVAMTPTYMDSRKYVSDQTATPMLDGTSLGICTGQSMDRGNSQTFGNSQNIQEY
GYSSTNSSDSSSQQLVASSLTSSTLLEILEAMKHPSTGVQLLSEKGLSPYCFISAEVVHWLVNHVEGI
QTQAMAIDIMQKMLEEQLI THASGEAWRTFIYGFYFYKIVTDKEPDRVAMQQPATTWHTAGVDDFAFQR
KWFEVAFVAEELVHSEIPAFLLPWLPSRPASYASRHSF SRSFGGRSQAALLAATVPEQRTVTLDVDVN
NRTDRLWCSCYHGNFSLNAAFEIKLHMAVTA AVL FEMVQGWHRKATSCGFLLPVLEGPFLPSYLY
GDPLRAQLFIPLNISCLLKEGSEHLFDSFEPETYWDRMHLFQEAI AHRFGFVQDKYSASAFNFAENKPKQ
YIHVTGTVFLQLPYSKRKFSGQQRRRNRSTSTNQNMFCCEERVGNWAYNTMLTKTWRSSATGDEKFADR
LLKDFDTFCINRDNRLLVTFWTSCKLEKMHASAP
  
```

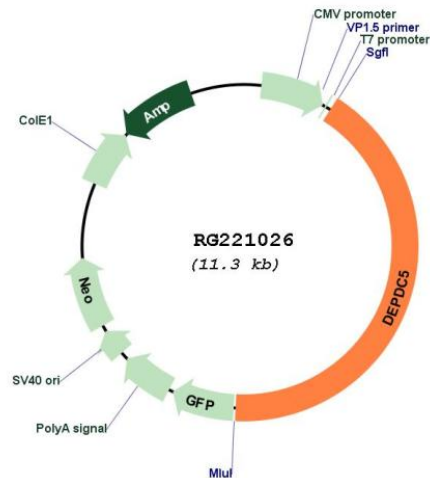
TRTRPLE - GFP Tag - V

Restriction Sites: SgfI-MluI

Cloning Scheme:



Plasmid Map:



ACCN: NM_014662

ORF Size: 4716 bp

OTI Disclaimer: The molecular sequence of this clone aligns with the gene accession number as a point of reference only. However, individual transcript sequences of the same gene can differ through naturally occurring variations (e.g. polymorphisms), each with its own valid existence. This clone is substantially in agreement with the reference, but a complete review of all prevailing variants is recommended prior to use. [More info](#)

OTI Annotation: This clone was engineered to express the complete ORF with an expression tag. Expression varies depending on the nature of the gene.

Components: The ORF clone is ion-exchange column purified and shipped in a 2D barcoded Matrix tube containing 10ug of transfection-ready, dried plasmid DNA (reconstitute with 100 ul of water).

Reconstitution Method:

1. Centrifuge at 5,000xg for 5min.
2. Carefully open the tube and add 100ul of sterile water to dissolve the DNA.
3. Close the tube and incubate for 10 minutes at room temperature.
4. Briefly vortex the tube and then do a quick spin (less than 5000xg) to concentrate the liquid at the bottom.
5. Store the suspended plasmid at -20°C. The DNA is stable for at least one year from date of shipping when stored at -20°C.

RefSeq: [NM_014662.5](#)

RefSeq Size: 5458 bp

RefSeq ORF: 4719 bp

Locus ID: 9681

UniProt ID: [O75140](#)

Cytogenetics: 22q12.2-q12.3

Domains: DEP

Gene Summary: This gene encodes a member of the IML1 family of proteins involved in G-protein signaling pathways. The mechanistic target of rapamycin complex 1 (mTORC1) pathway regulates cell growth by sensing the availability of nutrients. The protein encoded by this gene is a component of the GATOR1 (GAP activity toward Rags) complex which inhibits the amino acid-sensing branch of the mTORC1 pathway. Mutations in this gene are associated with autosomal dominant familial focal epilepsy with variable foci. A single nucleotide polymorphism in an intron of this gene has been associated with an increased risk of hepatocellular carcinoma in individuals with chronic hepatitis C virus infection. Alternative splicing results in multiple transcript variants. [provided by RefSeq, Mar 2014]