

Product datasheet for **RG221025**

CACNA1C (NM_000719) Human Tagged ORF Clone

Product data:

Product Type:	Expression Plasmids
Product Name:	CACNA1C (NM_000719) Human Tagged ORF Clone
Tag:	TurboGFP
Symbol:	CACNA1C
Synonyms:	CACH2; CACN2; CACNL1A1; CaV1.2; CCHL1A1; LQT8; TS; TS. LQT8
Mammalian Cell Selection:	Neomycin
Vector:	pCMV6-AC-GFP (PS100010)
E. coli Selection:	Ampicillin (100 ug/mL)
ORF Nucleotide Sequence:	>RG221025 representing NM_000719 Red=Cloning site Blue=ORF Green=Tags(s)

TTTTGTAATACGACTCACTATAGGGCGGCCGGAATTCGTCGACTGGATCCGGTACCGAGGAGATCTGCC
GCC**CGATCGCC**

ATGGTCAATGAGAATACGAGGATGTACATTCCAGAGGAAAACCACCAAGTTCCAACATGGGAGCCAC
GCCCGCCCATGCCAACATGAATGCCAATGCGGCAGCGGGGCTGGCCCTGAGCACATCCCCACCCGGG
GGCTGCCCTGTCGTGGCAGGCGGCCATCGACGCAGCCCGCAGGCTAAGCTGATGGGCAGCGCTGGCAAT
GCGACCATCTCCACAGTCAGCTCCACGCAGCGGAAGCGGCAGCAATATGGGAAACCAAGAAGCAGGGCA
GCACCACGGCCACACGCCCGCCCGAGCCCTGCTCTGCCTGACCCTGAAGAACCCATCCGGAGGGCCTG
CATCAGCATTGTCGAATGGAAACCAATTTGAAATAATTATTTACTGACTATTTTTGCCAATTGTGTGGCC
TTAGCGATCTATATCCCTTTCCAGAAGATGATCCAACGCCACCAATCCAACCTGGAACGAGTGGAAAT
ATCTCTTTCTCATAATTTTTACGGTGGAAGCGTTTTTAAAAGTAATCGCCTATGGACTCCTCTTTACCC
CAATGCCTACCTCCGCAACGGCTGGAACCTACTAGATTTATAATTGTGGTTGTGGGGCTTTTTAGTGCA
ATTTTAGAACAAGCAACCAAGCAGATGGGGCAAACGCTCTCGGAGGGAAAGGGCCGGATTTGATGTGA
AGGCGTGAGGGCCTCCGCGTGTGCGCCCCCTGCGGCTGGTGTCCGGAGTCCCAAGTCTCCAGGTGGT
CCTGAATTCATCATCAAGGCCATGGTCCCCCTGCTGCACATCGCCCTGCTTGTGCTGTTGTGCATCATC
ATCTACGCCATCATCGGCTTGGAGCTCTCATGGGGAAGATGCACAAGACCTGCTACAACCAGGAGGGCA
TAGCAGATGTTCCAGCAGAAGATGACCCTTCCCCTTGTGCGCTGGAAACGGGCCACGGCCGCGCAGTGCCA
GAACGGCACGGTGTGCAAGCCCGCTGGGATGGTCCCAAGCACGGCATCACCAACTTTGACAACCTTTGCC
TTCGCCATGCTCACGGTGTCCAGTGCATCACCATGGAGGGCTGGACGGACGTGCTGACTGGGTCAATG
ATGCCGTAGGAAGGGACTGGCCCTGGATCTATTTTGTACTACTAATCATCATAGGGTCATTTTTGTACT
TAACTTGGTTCTCGGTGTGCTTAGCGGAGAGTTTTCCAAAGAGAGGGAGAAGGCCAAGGCCCGGGGAGAT
TTCCAGAAGCTGCGGGAGAAGCAGCAGCTAGAAGAGGATCTCAAAGGCTACCTGGATTGGATCACTCAGG
CCGAAGACATCGATCCTGAGAATGAGGACGAAGGCATGGATGAGGAGAAGCCCCGAAACATGAGCATGCC
CACCAGTGAGACCGAGTCCGTCAACACCGAAAACCTGGCTGGAGGTGACATCGAGGGAGAAAACCTCGGG



[View online >](#)

GCCAGGCTGGCCACCGGATCTCCAAGTCAAAGTTCAGCCGCTACTGGCGCCGGTGAATCGGTTCTGCA
 GAAGGAAGTGCCGCGCCGAGTCAAGTCTAATGTCTTCTACTGGCTGGTATTTTCTGGTGTCTCTCAA
 CACGCTCACCATTTGCCTCTGAGCACTACAACCAGCCAACTGGCTCACAGAAGTCCAAGACACGGCAAAC
 AAGGCCCTGCTGGCCCTGTTACGGCAGAGATGCTCCTGAAGATGTACAGCCTGGGCTGCAGGCCACT
 TCGTGTCCCTCTCAACCGCTTTGACTGCTTCGTGTGTGGCGGCATCCTGGAGACCATCCTGGTGA
 GACCAAGATCATGTCCCACTGGGCATCTCCGTGCTCAGATGCGTCCGGCTGTGAGGATTTTCAAGAT
 ACGAGGTACTGGAACCTTTGACCAACCTGGTGGCATCCTTGTGAACCTGTGCGCTCCATCGCCTCCC
 TGCTCCTTCTCCTTCTCCTTCTCATCATCTTCTCCCTCCTGGGGATGCAGCTCTTTGGAGGAAAGT
 CAACTTTGATGAGATGCAGACCCGGAGGAGCACATTGATAAATTCCCCAGTCCCTCCTACTGTGTTT
 CAGATCCTGACCGGGGAGGACTGGAATTCGGTGTATGATGAGGATCATGGCTTATGGCGGCCCTCTT
 TTCCAGGGATGTTAGTCTGTATTTACTTTCATCATCCTCTTCTCATCTGTGAAACTATATCCTACTGAATG
 GTTCTTGGCCATTGCTGTGGACAACCTGGCTGATGCTGAGAGCCTCACATCTGCCAAAAGGAGGAGGAA
 GAGGAGAAGGAGAGAAAGAAGCTGGCCAGGACTGCCAGCCAGAGAAGAAACAAGAGTTGGTGGAGAAGC
 CGGCAGTGGGGGAAATCCAAGGAGGAGAAGATTGAGCTGAAATCCATCACGGCTGATGGAGAGTCTCCACC
 CGCCACCAAGATCAACATGGATGACCTCCAGCCCAATGAAAATGAGGATAAGAGCCCTACCCCAACCCA
 GAAACTACAGGAGAAGAGGATGAGGAGGAGCCAGAGATGCTGTGGCCCTCGCCACAGCACTCTCTG
 AGCTTACCTTAAGGAAAAGGCAGTGCCCATGCCAGAAGCCAGCGGTTTTTTCATCTTACGCTCTAACAA
 CAGGTTTCGCCTCCAGTGCCACCGCATTGTCAATGACACGATCTTACCACCTGATCCTTCTTCTTATT
 CTGCTCAGCAGCATTTCCCTGGCTGCTGAGGACCCGGTCCAGCACACCTCCTTACGGAACCATATTCTGT
 TTTATTTTGATATTGTTTTTACCACATTTTACCATTGAAATGCTCTGAAGATGACTGCTTATGGGGC
 TTTCTTGACAAGGGTCTTTCTGCCGAACTACTTCAACATCCTGGACCTGCTGGTGGTCCAGCGTGTCC
 CTCATCTCCTTTGGCATCCAGTCCAGTCAATCAATGCTGTGAAGATCTTGGAGTCTGCGAGTACTCA
 GGCCCTGAGGGCCATCAACAGGGCCAAGGGGCTAAAGCATGTGGTTCAGTGTGTGTTTGCCTCCCG
 GACCATCGGGAACATCGTGATTGTCACCACCCTGCTGCAGTTCATGTTTGCCTGCATCGGGCTCCAGCTC
 TTCAAGGGAAGCTGTACACCTGTTGACACAGTTCCAAGCAGACAGAGGGGAATGCAAGGGCAACTACA
 TCACGTACAAAGACGGGGAGGTTGACCACCCCATCATCCAACCCCGCAGCTGGGAGAACAGCAAGTTTGA
 CTTTGACAATGTTCTGGCAGCCATGATGGCCCTTTCACCGTCTCCACCTTGAAGGGTGGCCAGAGCTG
 CTGTACCCTCCATCGACTCCCACAGGAAGACAAGGGCCCATCTACAACCTACCGTGTGGAGATCTCCA
 TCTTCTTATCATCTACATCATCATCATCGCTTCTTTCATGATGAACATCTTCTGGGCTTCGTCATCGT
 CACCTTTCAGGAGCAGGGGAGCAGGAGTACAAGAAGTGTGAGCTGGACAAGAACCAGCAGCAGTGCCTG
 GAATACGCCCTCAAGGCCGGCCCTGCGGAGGTACATCCCAAGAACCAGCACCAGTACAAGTGTGGT
 ACGTGGTCAACTCCACTACTTCGAGTACTGATGTTCTGCTCATCCTGCTCAACACCATCTGCCTGGC
 CATGCAGCACTACGGCCAGAGCTGCCTGTTCAAAATCGCCATGAACATCCTCAACATGCTCTTACTGGC
 CTCTTACCGTGGAGATGATCCTGAAGCTCATTGCCTTCAAACCAAGCACTATTTCTGTGATGCATGGA
 ATACATTTGACGCCTTGATTGTTGTGGGTAGCATTGTTGATATAGCAATCACCGAGGTAACCCAGCTGA
 ACATACCAATGCTCTCCCTCTATGAACGCAGAGGAAAACCTCCCGCATCTCCATCACCTTCTTCCGCTG
 TTCCGGTTCATGCGTCTGGTGAAGCTGCTGAGCCGTGGGGAGGGCATCCGGACGCTGCTGTGGACCTTCA
 TCAAGTCTTCCAGGCCCTGCCATGTGGCCCTCCTGATCGTGTGCTGTTCTTATCTACGCGGTGAT
 CGGGATGCAGGTGTTTGGGAAAATTGCCCTGAATGATACCACAGAGATCAACCGGAACAACAACCTTTCAG
 ACCTTCCCCAGCCGTGCTGCTCCTTTCAGGTGTGCCACCGGGGAGGCTGGCAGGACATCATGCTGG
 CCTGCATGCCAGGCAAGAAGTGTGCCCCAGAGTCCGAGCCAGCAACAGCACGGAGGGTGAACACCCTG
 TGGTAGCAGCTTGTGCTTCTACTTTCATCAGCTTCTACATGCTCTGTGCCTTCTGATCATCAACCTC
 TTTGTAGCTGTCATCATGGACAACCTTGTACTACCTGACAAGGACTGGTCCATCCTTGGTCCCCACCACC
 TGGATGAGTTTAAAAGAATCTGGGCAGAGTATGACCTGAAGCCAAGGGTGTATCAAACACCTGGATGT
 GGTGACCCTCCTCCGGCGGATTCAGCCGCCACTAGTTTTGGGAAGCTGTGCCCTACCCGCTGGCTTGC
 AAACGCCTGGTCTCCATGAACATGCCTCTGAACAGCGACGGGACAGTATGTTCAATGCCACCCTGTTT
 CCCTGGTCAAGGAGGCTGAGGATCAAACAGAAAGGAACTAGAACAAAGCCAATGAGGAGCTGCGGGC
 GATCATCAAGAAGATCTGGAAGCGGACCAGCATGAAGCTGCTGGACCAGGTGGTGGCCCTGCGAGTGT
 GATGAGGTACCGTTGGCAAGTCTACGCCACGTTCTGATCCAGGAGTACTTCCGGAAGTTCAAGAAGC
 GCAAAGAGCAGGGCTTGTGGGCAAGCCCTCCCAGAGGAACGCGCTGTCTCTGCAGGCTGGCTTGCAC
 ACTGCATGACATCGGGCCTGAGATCCGACGGGCCATCTCTGGAGATCTCACCGCTGAGGAGGAGCTGGAC
 AAGCCATGAAGGAGGCTGTGTCGCTGCTTCTGAAGATGACATCTTTCAGGAGGGCCGGTGGCCTGTTCC

GCAACCACGTCAGCTACTACCAAAGCGACGGCCGGAGCGCCTTCCCCAGACCTTCACTCAGCGCCC
GCTGCACATCAACAAGGCGGGCAGCAGCCAGGGCGACTGAGTCGCCATCCCACGAGAAGCTGGTGGAC
TCCACCTTCAACCCGAGCAGCTACTCGTCCACCGGCTCCAACGCCAACATCAACAACGCCAACACCCG
CCCTGGGTCGCCTCCCTCGCCCCGCCGGTACCCAGCAGGTCAGCACTGTGGAGGGCCACGGGCCCC
CTTGTCCCCTGCCATCCGGGTGCAGGAGGTGGCGTGGAAGCTCAGCTCCAACAGGTGCCACTCCGGGAG
AGCCAGGCAGCCATGGCGGTGAGGAGGAGCGTCTCAGGATGAGATCTATGAAGTGAAGATGAACATG
ACACGGAGGCCTGCAGTGAGCCAGCCTGCTCTCCACAGAGATGCTCTCCTACCAGGATGACGAAAATCG
GCAACTGACGCTCCAGAGGAGGACAAGAGGGACATCCGGCAATCTCCGAAGAGGGGTTTCTCCGCTCT
GCCTACTAGGTGGAAGGCCTCCTCCACCTGGAATGTCTGAAGCGACAGAAGGACCGAGGGGGAGACA
TCTCTCAGAAGACAGTCTGCCCTTGCATCTGGTTCATCATCAGGCATTGGCAGTGGCAGGCCTGAGCCC
CCTCCTCCAGAGAAGCCATTCCCTGCCTATTCCCTAGGCCTTTTGCCACCCACCAGCCACACCTGGC
AGCCGAGGCTGGCCCCACAGCCCGTCCCACCCTGCGGCTTGAGGGGTGAGTCCAGTGAGAACTCA
ACAGCAGCTTCCATCCATCCACTGCGGCTCCTGGGCTGAGACCACCCCGTGGCGGGGCAGCAGCGC
CGCCCGGAGAGTCCGGCCGTCTCCTCATGGTGCCAGCCAGGCTGGGGCCCCAGGAGGCAGTCCAC
GGCAGTGCCAGCAGCCTGGTGAAGCGGTCTTGATTTGAGAAGGACTGGGGCAGTTTGCTCAAGATCCCA
AGTTCATCGAGGTCACCACCAGGAGCTGGCCGACGCTGCGACATGACCATAGAGGAGATGGAGAGCGC
GGCCGACAACATCCTCAGCGGGGGCGCCCCACAGAGCCCAATGGCGCCCTTTACCCCTTGTGAACTGC
AGGGACGCGGGGCAGGACCGAGCCGGGGGGAAGAGGACGCGGGCTGTGTGCGCGCGGGGTGACCCGA
GTGAGGAGGAGCTCCAGGACAGCAGGCTACGTCAGCAGCCTG

ACGCGTACGCGGCCGCTCGAG – GFP Tag – GTTAA

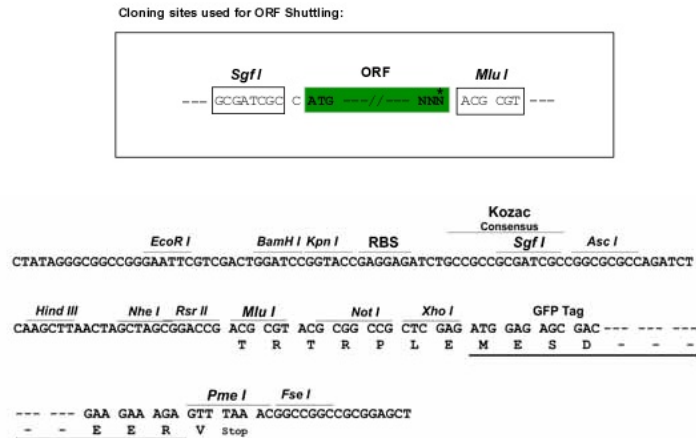
Protein Sequence: >RG221025 representing NM_000719
 Red=Cloning site Green=Tags(s)

```

MVNENTRMYIPEENHQGSNYGSPRPAHANMNANAAAGLAPEHIPTPGAALSWQAAIDAARQAKLMGSAGN
ATISTVSTQRKRQYQYKPKKQGSTTATRPPRALLCLTLKNPIRRACISIVEWKPFEEIIILLTIFANCVA
LAIYIPFPEDDSNATNSNLERVEYLFLLIIFTVEAFLKVIAYGLLFHPNAYLRNGWNLLDFIIVVGLFSA
ILEQATKADGANALGGKAGFDVKALRAFRVLRPLRLVSGVPSLQVVLNSIIKAMVPLLHIALLVLFVII
IYAIIGLELFMGKMHKTCYNQEGIADVPAEDDPSPCALETGHGRQCQNGTVCKPGWDGPKHGITNFDNFA
FAMLTVFQCITMEGWTDVLYWVNDVAVGRDWPWIYFVTLIIIGSFFVLNLVLGVLSEGFSKEREKAKARGD
FQKLRKQQLLEEDLKGYLWDWITQAEDIDPENEDEGMDEEKPRNMSMPTSETESVNTENVAGGDIEGENCG
ARLAHRISKSKFSRYWRRWNRFCRRKCAAVKSNVFWLVI FLVFLNLT IASEHYNQPNWLTEVQDTAN
KALLALFTAEMLLKMYSGLQAYFVSLFNRFDCFVVCGGILETILVETKIMSPLGISVLRVLRLLRIFKI
TRYWNSLNLVALLNSVRSIASLLLLLFLFIIIFSLGMLFGGKFNDEMQRTRSTFDNFPQSLLTVF
QILTGEDWNSVMYDGMAYGGPSFPGMLVCIYFIIILFICGNYILLNVFLAIAVDNLADAESLTSQKKEE
EEKERKKLARTASPEKKQELVEKPAVGESKEEKIELKSITADGESPPATKINMDDLQPNENEDKSPYNP
ETTGEDEEEPEMPVGRPRPLSELHLKEKAVMPPEASAFFIFSSNNRFRQLQCHRIVNDTIFTNLILFFI
LLSSISLAAEDPVQHTSFRNHILFYFDIVFTTIFTIEIALKMTAYGAFLHKGSFCRNYFNILLDLLVVSVS
LISFGIQSSAINVVKILRVLRLRPLRAINRAKGLKHVVQCVFVAIRTIIGNIVIVITLLQFMFACIGVQL
FKGKLYTCSOSSKQTEAECKGNITYYKDGVEDHPIIQPRSWENSKFDFDNVLAAMMALFTVSTFEGWPEL
LYRSIDSHTEKGIYNYRVEISIFFIIYIIIIAFFMMNIFVGFVIVTFQEQGEQYKNCELDKNQRQCV
EYALKARPLRRYIPKNQHQYKVVYVNSTYFEYLMFVILLNLTICLAMQHYGQSCLFKIAMNINMLFTG
LFTVEMILKLI AFKPKHYFCDAWNTFDALIVVGSIVDIAITEVNP AEHTQCSPSMNAEENSRSITFFRL
FRVMRLVKLLSRGEGIRTLWTFIKSFQALPYVALLIVMLFFIYAVIGMQVFGKIALNDTTEINRNNNFQ
TFPQAVLLLFRCATGEAWQDIMLACMPGKKCAPESEPSNSTEGETPCGSSFVAVFYFISFYMLCAFLIINL
FVAVIMDNFDYLTRDWSILGPHHLDEFKRIWAEYDPEAKGRIKHLDVVTLLRRIQPPLGFGKLCPHRVAC
KRLVSMNPLNSDGTVMFNATL FALVRTALRIKTEGNLEQANEELRAIIKKIWKRTSMKLLDQVVPAGD
DEVTVGKFYATFLIQEYFRKFKRKEQGLVGKPSQRNALSLQAGLRTLHDIGPEIRRAISGDLTAEELD
KAMKEAVSAASEDDIFRRAGGLFGNHVSYYSQSDGRSAFPQTFTTQRPLHINKAGSSQGDTESPSHEKLV
STFTPSSYSSTGSNANINNANTALGRLPRPAGYPSTVSTVEGHGPPLSPAIRVQEVAVKLSNRCHSRE
SQAAMAGQEETSQDEIYEVKMNHDTEACSEPSLLSTEMLSYQDDENRQLTLPEEDKRDIRQSPKRGFLRS
ASLGRRASFHLECLKRQKDRGGDISQKTVLPLHLVHHQALAVAGLSPLLQRSHSPASFPRPFATPPATPG
SRGWPPQVPVTLRLEGVESSEKLNSSFPSIHCGSWAETTPGGGSSAARRVRPVSLMVPVSAQAGAPGRQFH
GSASSLVEAVLISEGLGQFAQDPKIEVTTQELADACDMTIEEMESAADNLSGGAPQSPNGALLPFVNC
RDAGQDRAGGEEDAGCVRARGRPSEEELQDSRVVYSSL
  
```

TRTRPLE – GFP Tag – V

Restriction Sites: SgfI-MluI

Cloning Scheme:


ACCN: NM_000719

ORF Size: 6414 bp

OTI Disclaimer: Due to the inherent nature of this plasmid, standard methods to replicate additional amounts of DNA in *E. coli* are highly likely to result in mutations and/or rearrangements. Therefore, OriGene does not guarantee the capability to replicate this plasmid DNA. Additional amounts of DNA can be purchased from OriGene with batch-specific, full-sequence verification at a reduced cost. Please contact our customer care team at custsupport@origene.com or by calling 301.340.3188 option 3 for pricing and delivery.

The molecular sequence of this clone aligns with the gene accession number as a point of reference only. However, individual transcript sequences of the same gene can differ through naturally occurring variations (e.g. polymorphisms), each with its own valid existence. This clone is substantially in agreement with the reference, but a complete review of all prevailing variants is recommended prior to use. [More info](#)

OTI Annotation: This clone was engineered to express the complete ORF with an expression tag. Expression varies depending on the nature of the gene.

Components: The ORF clone is ion-exchange column purified and shipped in a 2D barcoded Matrix tube containing 10ug of transfection-ready, dried plasmid DNA (reconstitute with 100 ul of water).

Reconstitution Method:

1. Centrifuge at 5,000xg for 5min.
2. Carefully open the tube and add 100ul of sterile water to dissolve the DNA.
3. Close the tube and incubate for 10 minutes at room temperature.
4. Briefly vortex the tube and then do a quick spin (less than 5000xg) to concentrate the liquid at the bottom.
5. Store the suspended plasmid at -20°C. The DNA is stable for at least one year from date of shipping when stored at -20°C.

RefSeq: [NM_000719.4](#), [NP_000710.4](#)

RefSeq Size: 8464 bp

RefSeq ORF: 6417 bp

Locus ID: 775

UniProt ID: [Q13936](#)

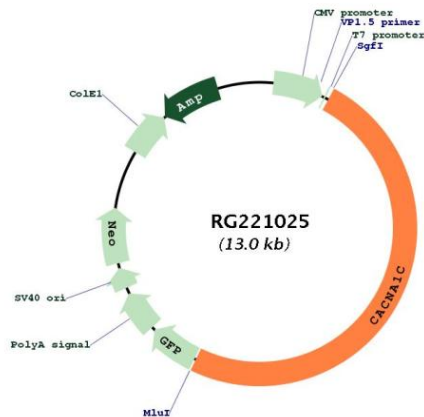
Cytogenetics: 12p13.33

Protein Families: Druggable Genome, Ion Channels: Calcium, Transmembrane

Protein Pathways: Alzheimer's disease, Arrhythmogenic right ventricular cardiomyopathy (ARVC), Calcium signaling pathway, Cardiac muscle contraction, Dilated cardiomyopathy, GnRH signaling pathway, Hypertrophic cardiomyopathy (HCM), Long-term potentiation, MAPK signaling pathway, Type II diabetes mellitus, Vascular smooth muscle contraction

Gene Summary: This gene encodes an alpha-1 subunit of a voltage-dependent calcium channel. Calcium channels mediate the influx of calcium ions into the cell upon membrane polarization. The alpha-1 subunit consists of 24 transmembrane segments and forms the pore through which ions pass into the cell. The calcium channel consists of a complex of alpha-1, alpha-2/delta, beta, and gamma subunits in a 1:1:1:1 ratio. There are multiple isoforms of each of these proteins, either encoded by different genes or the result of alternative splicing of transcripts. The protein encoded by this gene binds to and is inhibited by dihydropyridine. Alternative splicing results in many transcript variants encoding different proteins. Some of the predicted proteins may not produce functional ion channel subunits. [provided by RefSeq, Oct 2012]

Product images:



Circular map for RG221025