

Product datasheet for **RG221013**

BOC (NM_033254) Human Tagged ORF Clone

Product data:

Product Type:	Expression Plasmids
Product Name:	BOC (NM_033254) Human Tagged ORF Clone
Tag:	TurboGFP
Symbol:	BOC
Synonyms:	CDON2
Mammalian Cell Selection:	Neomycin
Vector:	pCMV6-AC-GFP (PS100010)
E. coli Selection:	Ampicillin (100 ug/mL)
ORF Nucleotide Sequence:	>RG221013 representing NM_033254 Red=Cloning site Blue=ORF Green=Tags(s)

TTTTGTAATACGACTCACTATAGGGCGGCCGGAATTCGTCGACTGGATCCGGTACCGAGGAGATCTGCC
GCC**CGATCGCC**

ATGCTGCGTGGGACGATGACGGCGTGGAGAGGAATGAGGCCTGAGGTCACACTGGCTTGCCCTCCTAG
CCACAGCAGGCTGCTTTGCTGACTTGAACGAGGTCCCTCAGGTCACCGTCCAGCCTGCGTCCACCGTCCA
GAAGCCCGGAGGCACTGTGATCTGGGCTGCGTGGTGAACCTCCAAGGATGAATGTAACCTGGCGCCTG
AATGGAAGGAGCTGAATGGCTCGGATGATGCTCTGGGTGTCCTCATCACCCACGGGACCCTCGTCATCA
CTGCCCTTAACAACCACACTGTGGGACGGTACCAGTGTGTGGCCGGATGCCTGCGGGGGCTGTGGCCAG
CGTGCCAGCCACTGTGACTAGCCAATCTCCAGGACTTCAAGTTAGATGTGCAGCACGTGATTGAAGTG
GATGAGGGAAACACAGCAGTCATTGCCCTGCCACCTGCCTGAGAGCCACCCCAAAGCCAGGTCCGGTACA
GCGTCAAACAAGAGTGGCTGGAGGCCTCCAGAGGTAACACTACCTGATCATGCCCTCAGGGAACCTCCAGAT
TGTGAATGCCAGCCAGGAGGACGAGGGCATGTACAAGTGTGCAGCCTACAACCCAGTGACCCAGGAAGTG
AAAACCTCCGGCTCCAGCGACAGGCTACGTGTGCGCCGCTCCACCGCTGAGGCTGCCCGCATCATCTACC
CCCCAGAGGCCAAACCATCATCGTCACCAAAGGCCAGAGTCTCATTCTGGAGTGTGTGGCCAGTGGAAAT
CCCACCCACGGGTACCTGGGCAAGGATGGGTCCAGTGTACCGGCTACAACAAGACGCGCTTCCTG
CTGAGCAACCTCCTCATCGACACCACGAGGAGGACTCAGGCACCTACCGCTGCATGGCCGACAATG
GGGTTGGGCAGCCCGGGCAGCGGTCTCCTCTACAATGTCCAGGTGTTTGAACCCCTGAGGTACCCAT
GGAGCTATCCCAGCTGGTTCATCCCTGGGGCCAGAGTGCCAAGCTTACCTGTGAGGTGCGTGGGAACCC
CCGCCCTCCGTGCTGTGGCTGAGGAATGCTGTGCCCTCATCTCCAGCCAGCGCCTCCGGCTCTCCCGCA
GGGCCCTGCGCGTGTGCTCAGCATGGGCTGAGGACGAAGGCGTCTACCAGTGCATGGCCGAGAACGAGGT
TGGGAGCGCCATGCCGTAGTCCAGCTGCGGACCTCCAGGCAAGCATAACCCAAAGGCTATGGCAGGAT
GCTGAGCTGGCTACTGGCACACCTCCTGTATCACCTCCAACCTCGGCAACCCTGAGCAGATGCTGAGGG
GGCAACCGCGCTCCCCAGACCCCAACGTGAGTGGGCGCTGCTCCCGCAGTGTCCAGGAGAGAAGGG
GCAGGGGCTCCCGCAGGCTCCCATCATCTCAGCTCGCCCGCACCTCCAAGACAGACTCATATGAA



[View online >](#)

CTGGTGTGGCGGCTCGGCATGAGGGCAGTGGCCGGGCGCCAATCCTCTACTATGTGGTGAACACCCGCA
 AGGTACAAAATCCTCTGACGATTGGACCATCTCTGGCATTCCAGCCAACCAGCACCCGCTGACCCTCAC
 CAGACTTGACCCCGGGAGCTTGTATGAAGTGGAGATGGCAGCTTACAACCTGTGCGGGAGAGGGCCAGACA
 GCCATGGTCACCTTCGAACTGGACGGCGGCCAAACCCGAGATCATGGCCAGCAAAGAGCAGCAGATCC
 AGAGAGACGACCTGGAGCCAGTCCCAGAGCAGCAGCCAGCCAGACCACGGCCGCTCTCCCCCAGAG
 AGCTCCCGACAGGCCACCATCTCCACGGCCTCCGAGACCTCAGTGTACGTGACCTGGATTCCCCCTGGG
 AATGTGGGTCCCAATCCAGTCTCCGTGTGGAGTACAAGAAGCTAAAGAAAGTGGGAGACTGGATT
 TGGCCACCAGCGCCATCCCCCATCGCGGCTGTCGTGGAGATCACGGGCTAGAGAAAGCACCTCCTA
 CAAGTTTCGAGTCCGGGCTCTGAACATGCTGGGGAGAGCGAGCCAGCGCCCTCTCGGCCCTACGTG
 GTGTGGGCTACAGCGGTGCGTGTACGAGAGGCCGTGGCAGGTCTTATATCACCTTCACGGATGCGG
 TCAATGAGACCACCATCATGCTCAAGTGGATGTACATCCAGCAAGTAACAACAACACCCCAATCCATGG
 CTTTTATATCTATTATCGACCCACAGACAGTGAACATGATAGTACTACAAGAAGGATATGGTGAAGGG
 GACAAGTACTGGCACTCCATCAGCCACCTGCAGCCAGAGACCTCTACGACATTAAGATGCAGTGTCTCA
 ATGAAGGAGGGGAGAGCGAGTTCAGCAACGTGATGATCTGTGAGACCAAAGCTCGGAAGTCTTCTGGCCA
 GCCTGGTGCAGTCCACCCCAACTCTGGCCCCACCACAGCCGCCCTTCTGAAACCATAGAGCGGCCG
 GTGGGCACTGGGGCCATGGTGGCTCGCTCCAGCGACCTGCCTATCTGATTGTGCGGGTCTGCTGGGCT
 CCATCGTTCTCATCATCGTCACCTTCATCCCTTCTGCTTGTGGAGGGCCTGGTCTAAGCAAAAACATAC
 AACAGACCTGGGTTTTCTCGAAGTGCCCTTCCACCTCTGCCCGTATACTATGGTGCCATTGGGAGGA
 CTCCCAGGCCACCAGGCCAGTGGACAGCCCTACCTCAGTGGCATCAGTGGACGGGCTGTGCTAATGGGA
 TCCACATGAATAGGGGCTGCCCCCGGCTGCAGTGGGCTACCCGGGATGAAGCCCCAGCAGCACTGCC
 AGGCGAGCTTACGAGCAGAGTACACCAGCAGCTGCTGAGGCAGACCCATCTTGGCAATGGATATGAC
 CCCCAGTACCAGATCAGAGGGTCCCAAGTCTAGCCCGACGAGGGCTCTTTTATACACACTGC
 CCGACACTCCACTCACCAGTCTGCAGCCCCATCAGACTGCTGCAACGCCAGGAGCAGCCTGTGC
 TGTGGCCAGTACAGGGGTGAGGAGAGCCCCGACAGTCCCTGTCTGGAAGCAGTGTGGGACCTCCATTT
 CACTCAGGGCCCCATGCTGCTTGGCCTTGTGCCAGTTGAAGAGGTGGACAGTCTGACTCTGCCAAG
 TGAGTGGAGGAGACTGGTGTCCCCAGCACCCTGAGGGCCTACGTAGGACAGGAACCTGGAATGCAGCT
 CTCCCCGGGGCCACTGGTGGTGTCTTTTGAACACCACCTCTCAAAAT

ACGCGTACGCGGGCCGCTCGAG – GFP Tag – GTTTAA

Protein Sequence:

>RG221013 representing NM_033254
 Red=Cloning site Green=Tags(s)

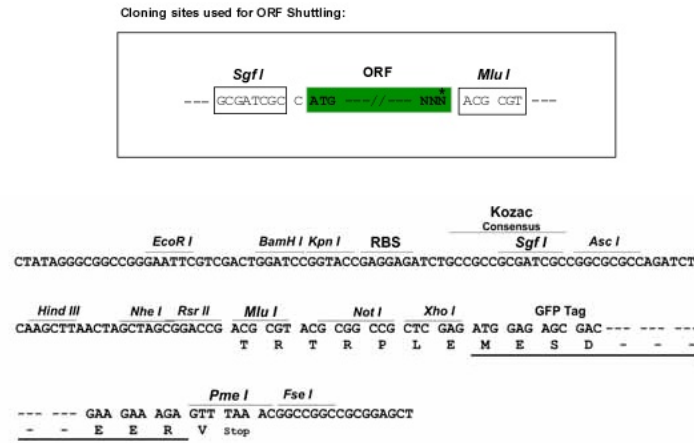
MLRGTMTAWRMRPEVTLACLALLATAGCFADLNEVPQVTVPASTVQKPGGTIVILGCVVEPPRMNVTWRL
 NGKELNGSDDALGVLITHGTLVITALNNHTVGRYQCVARMPAGAVASVPATVTLANLQDFKLDVQHVEV
 DEGNTAVIACHLPESHKAQVRYSVKQEWLEASRGNLIMPSONLQIVNASQEDGMYKCAAYNPVTQEV
 KTSGSSDRLRVRSTAEAAARIIPPEAQTIIIVTKGQSLILECVASGIPPPRVTWAKDGSSVTGYNKTRFL
 LSNLLIDTTSEEDSGTYRCMADNGVQPGAIVILYNVQVFEPPEVTMELSQLVIPWGQSAKLTCEVRGNP
 PPSVLWLRNAVPLISSQRLRLSRRALRVL SMGPEDEGVYQCAENEVGSAAHVAVQLRTRSPSITPRWLQD
 AELATGTPPVSPSKLGNPEQMLRGQPALPRPPTS VGPASPQCPGEGQGAPAEAPIILSSPRTSKTDSEY
 LVWRPRHEGSGRAPILYYVVKHRKVTNSDDWTISGIPANQHRLTLTRLDPGSLYEVEMAAYNACAGEQT
 AMVTFRTGRRPKPEIMASKEQIQRDDPGASPSSQPDHGRSPPEAPDRPTISTASETSVYVWTWIPRG
 NGGFPIQSFRVEYKLLKVDWILATSAIPPSRLSVEITGLEKGTSYKFRVRALNMLGESEPSAPSRPYV
 VSGYSGRVYERP VAGPYITFTDAVNETT IMLKWMYIPASNNTPIHGFIYYRPTDSDNDSYKDMVEG
 DKYWHISISHLQPETS YDIKMQCFNEGGESEFSNVMICETKARKSSGQPGRLPPPTLAPPQPLPETIERP
 VGTGAMVARSSDLPYLIVGVVLGSIVLIIIVTFIPFCLWRAWKQKHTTDLGFPRALPPSCPYTMVPLGG
 LPGHQASGQPYLSGISGRACANGIHMNRGCP SAAVGYPGMKPQQHCPGELQQQSDTSSLRQTHLNGYD
 PQSHQITRGPKSPDEGSFLYTL PDDSTHQLLQPHHDCQRQE QPAAVGQSGVRRAPDSPVLEAVWDPPF
 HSGPPCCLGLVPVEEVDSPDSCQVSGGDWCPQHPVGAYVQEPGMQLSPGPLVRVVFETPLTI

TRTRPLE – GFP Tag – V

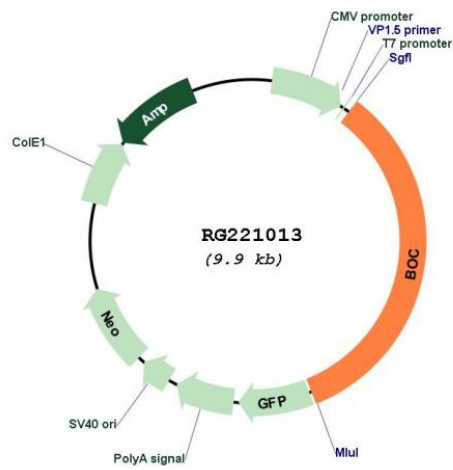
Restriction Sites:

Sgfl-MluI

Cloning Scheme:



Plasmid Map:



ACCN: NM_033254

ORF Size: 3342 bp

OTI Disclaimer: Due to the inherent nature of this plasmid, standard methods to replicate additional amounts of DNA in E. coli are highly likely to result in mutations and/or rearrangements. Therefore, OriGene does not guarantee the capability to replicate this plasmid DNA. Additional amounts of DNA can be purchased from OriGene with batch-specific, full-sequence verification at a reduced cost. Please contact our customer care team at custsupport@origene.com or by calling 301.340.3188 option 3 for pricing and delivery.

The molecular sequence of this clone aligns with the gene accession number as a point of reference only. However, individual transcript sequences of the same gene can differ through naturally occurring variations (e.g. polymorphisms), each with its own valid existence. This clone is substantially in agreement with the reference, but a complete review of all prevailing variants is recommended prior to use. [More info](#)

OTI Annotation: This clone was engineered to express the complete ORF with an expression tag. Expression varies depending on the nature of the gene.

Components: The ORF clone is ion-exchange column purified and shipped in a 2D barcoded Matrix tube containing 10ug of transfection-ready, dried plasmid DNA (reconstitute with 100 ul of water).

Reconstitution Method:

1. Centrifuge at 5,000xg for 5min.
2. Carefully open the tube and add 100ul of sterile water to dissolve the DNA.
3. Close the tube and incubate for 10 minutes at room temperature.
4. Briefly vortex the tube and then do a quick spin (less than 5000xg) to concentrate the liquid at the bottom.
5. Store the suspended plasmid at -20°C. The DNA is stable for at least one year from date of shipping when stored at -20°C.

RefSeq: [NM_033254.4](#)

RefSeq Size: 4293 bp

RefSeq ORF: 3345 bp

Locus ID: 91653

UniProt ID: [Q9BWW1](#)

Cytogenetics: 3q13.2

Protein Families: Druggable Genome, Transmembrane

Gene Summary: The protein encoded by this gene is a member of the immunoglobulin/fibronectin type III repeat family. It is a component of a cell-surface receptor complex that mediates cell-cell interactions between muscle precursor cells, and promotes myogenic differentiation. Alternative splicing results in multiple transcript variants encoding different isoforms. [provided by RefSeq, Sep 2014]