

## Product datasheet for **RG220965**

### **BEX1 (NM\_018476) Human Tagged ORF Clone**

#### Product data:

**Product Type:** Expression Plasmids  
**Product Name:** BEX1 (NM\_018476) Human Tagged ORF Clone  
**Tag:** TurboGFP  
**Symbol:** BEX1  
**Synonyms:** BEX2; HBEX2; HGR74-h  
**Mammalian Cell Selection:** Neomycin  
**Vector:** pCMV6-AC-GFP (PS100010)  
**E. coli Selection:** Ampicillin (100 ug/mL)  
**ORF Nucleotide Sequence:** >RG220965 representing NM\_018476  
Red=Cloning site Blue=ORF Green=Tags(s)

TTTTGAATACGACTCACTATAGGGCGGCCGGAATTCGTCGACTGGATCCGGTACCGAGGAGATCTGCC  
 GCCCGATCGCC

ATGGAGTCCAAGAGAAACGAGCAGTAAACAGTCTCAGCATGGAAAAGCCAACCAAGAAAATGAAGAAA  
 AGGAGCAAGTTGCTAATAAAGGGAGCCCTTGGCCCTCCCTTTGGATGCTGGTGAATACTGTGTGCCTAG  
 AGGAAATCGTAGGCGTTCCGCGTTAGGCAGCCCATCTGCAGTATAGATGGGATATGATGCATAGGCTT  
 GGAGAACCACAGGCAAGGATGAGAGAAGAGAATATGGAAGGATTGGGGAGGAGGTGAGACAGCTGATGG  
 AAAAGCTGAGGGAAAAGCAGTTGAGTCATAGTCTGCGGGCAGTCAGCACTGACCCCTCACCATGACCA  
 TCATGATGAGTTTGCCTTATGCCC

ACGCGTACGCGGCCGCTCGAG - GFP Tag - GTTTAA

**Protein Sequence:** >RG220965 representing NM\_018476  
Red=Cloning site Green=Tags(s)

MESKEKRAVNSLSMENANQENEEKEQVANKGEPLALPLDAGEYCVPRGNRRFRVRQPILQYRWDMMHRL  
 GEPQARMREENMERIGEEVRQLMEKLREKQLSHSLRAVSTDPHHDHDEFCLMP

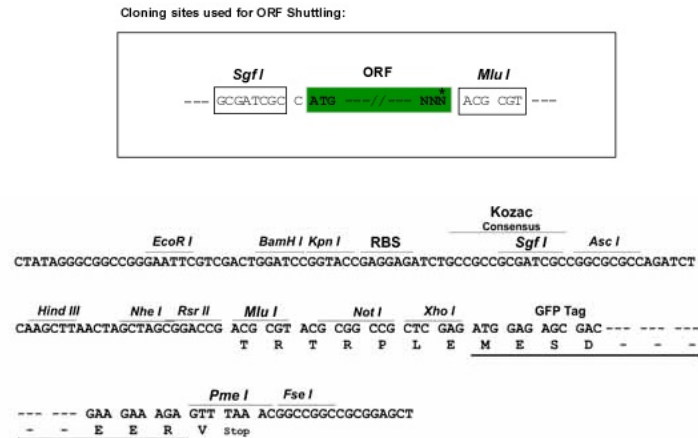
TRTRPLE - GFP Tag - V

**Restriction Sites:** SgfI-MluI



[View online »](#)

## Cloning Scheme:



ACCN: NM\_018476

ORF Size: 375 bp

OTI Disclaimer: The molecular sequence of this clone aligns with the gene accession number as a point of reference only. However, individual transcript sequences of the same gene can differ through naturally occurring variations (e.g. polymorphisms), each with its own valid existence. This clone is substantially in agreement with the reference, but a complete review of all prevailing variants is recommended prior to use. [More info](#)

OTI Annotation: This clone was engineered to express the complete ORF with an expression tag. Expression varies depending on the nature of the gene.

Components: The ORF clone is ion-exchange column purified and shipped in a 2D barcoded Matrix tube containing 10ug of transfection-ready, dried plasmid DNA (reconstitute with 100 ul of water).

Reconstitution Method:

1. Centrifuge at 5,000xg for 5min.
2. Carefully open the tube and add 100ul of sterile water to dissolve the DNA.
3. Close the tube and incubate for 10 minutes at room temperature.
4. Briefly vortex the tube and then do a quick spin (less than 5000xg) to concentrate the liquid at the bottom.
5. Store the suspended plasmid at -20°C. The DNA is stable for at least one year from date of shipping when stored at -20°C.

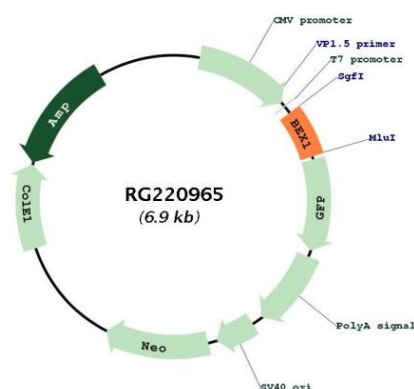
Note: Plasmids are not sterile. For experiments where strict sterility is required, filtration with 0.22um filter is required.

RefSeq: [NM\\_018476.4](#)

RefSeq Size: 862 bp

RefSeq ORF:	378 bp
Locus ID:	55859
UniProt ID:	<a href="#">Q9HBH7</a>
Cytogenetics:	Xq22
Domains:	BEX
Gene Summary:	Signaling adapter molecule involved in p75NTR/NGFR signaling. Plays a role in cell cycle progression and neuronal differentiation. Inhibits neuronal differentiation in response to nerve growth factor (NGF). May act as a link between the cell cycle and neurotrophic factor signaling, possibly by functioning as an upstream modulator of receptor signaling, coordinating biological responses to external signals with internal cellular states (By similarity).[UniProtKB/Swiss-Prot Function]

## Product images:



Circular map for RG220965