

Product datasheet for **RG220955**

GPR176 (NM_007223) Human Tagged ORF Clone

Product data:

Product Type:	Expression Plasmids
Product Name:	GPR176 (NM_007223) Human Tagged ORF Clone
Tag:	TurboGFP
Symbol:	GPR176
Synonyms:	HB-954
Mammalian Cell Selection:	Neomycin
Vector:	pCMV6-AC-GFP (PS100010)
E. coli Selection:	Ampicillin (100 ug/mL)



[View online »](#)

ORF Nucleotide Sequence:

>RG220955 representing NM_007223
 Red=Cloning site Blue=ORF Green=Tags(s)

TTTTGTAATACGACTCACTATAGGGCGGCCGGAATTCGTCGACTGGATCCGGTACCGAGGAGATCTGCC
 GCC**CGGATCGCC**

ATGGGACATAACGGGAGCTGGATCTCTCCAATGCCAGCGAGCCGACAAACGCGTCCGGCGCCGAGGCTG
 CGGGTGTGAACCGCAGCGCTCGGGGAGTTCGGCGAGGCGCAGCTGTACCGCCAGTTCACCACCACCGT
 GCAGGTCGTCATCTTCATAGGCTCGCTGCTCGGAACTTCATGGTGTATGGTCAACTTGCCGACAAAC
 GTGTTCAAATCTGTCACCAACAGGTTTCATTAACAACTGGCTGCTCGGGGATTTGTGCCAGCCTGGTCT
 GTGTGCCCTTCGACATCATCCTCAGCACCAGTCTCACTGTTGCTGGTGGATCTACACCATGCTCTTCTG
 CAAGGTCGTCAAATTTTGCACAAAGTATTCTGCTCTGTGACCATCCTCAGTCCCTGCTATTGCTTTG
 GACAGGTAATACTCAGTCTCTATCCACTGGAGAGGAAAATATCTGATGCCAAGTCCCGTGAAGTGGTGA
 TGTACATCTGGGCCATGCAGTGGTGGCCAGTGTCCCTGTGTTTGCAGTAACCAATGTGGCTGACATCTA
 TGCCACGTCCACCTGCACGGAAGTCTGGAGCAACTCCTTGGGCCACCTGGTGTACGTTCTGGTGTATAAC
 ATCACCACGGTCAATTGTGCCTGTGGTGGTGGTGTCTCTTCTTGATACTGATCCGACGGCCCTGAGTG
 CCAGCCAGAAGAAGAAGGTCATCATAGCAGCGCTCCGGACCCACAGAACACCATCTCTATTCCCTATGC
 CTCCCAGCGGGAGGCCGAGCTGCACGCCACCCTGCTCTCCATGGTGTGGTCTTTCATCTTGTGTAGCGTG
 CCCTATGCCACCCTGGTGTCTACCAGACTGTGCTCAATGTCCCTGACACTTCCGCTTCTTGTGCTGCTCA
 CTGCTGTTTGGCTGCCCAAAGTCTCCCTGCTGGCAAACCTGTTCTTTTCTTACTGTGAACAAATCTGT
 CCGCAAGTGTGATAGGGACCTGGTGAACCTACACCACCGGTACAGTCGCCGTAATGTGGTCAAGTACA
 GGGAGTGGCATGGCTGAGGCCAGCCTGGAACCCAGCATAACGCTCGGGTAGCCAGCTCTGGAGATGTTCC
 ACATTGGCAGCAGCAGATCTTTAAGCCACAGAGGATGAGGAAGAGAGTGAAGGCAAGTACATTGGCTC
 AGCTGACTTCCAGGCCAAGGAGATATTTAGCACCTGCCTGGAGGGAGAGCAGGGGCCACAGTTTGGC
 TCTGCCCCACCCCTGAGCACAGTGGACTCTGTATCCCAGGTGGCACCGGACGCCCTGTGGAACCTGAAA
 CATTCCCTGATAAGTATCCCTGCAGTTTGGCTTTGGCCTTTTGGCTTCTCAGTGGCTCTCAGA
 GACCCGAAACAGCAAGAAGCGGCTGCTTCCCCCTTGGGCAACACCCAGAAAGAGCTGATCCAGACAAAG
 GTGCCCAAGGTAGGCAGGGTGGAGCGGAAGATGAGCAGAAACAATAAAGTGAATTTTTCAAAGGTGG
 ATTCC

AG**CGGACCG**ACGCGTACGCGGCCGCTCGAG - GFP Tag - GTTTAA

Protein Sequence:

>RG220955 representing NM_007223
 Red=Cloning site Green=Tags(s)

MGHNGSWISPNASEPHNASGAEAGVNRSLGEGEQLYRQFTTTVQVVIFIGSLLGNFMVLWSTCRRT
 VFKSVTNRFIKNLACSGICASLVCVPFDIILSTSPHCCWWIYMLFCKVVKFLHKVFCVSVTILSFPAL
 DRYYSVLVPLERKISDAKSRELVMIWAHAVVASVPVFAVTNVADIYATSTCTEVWSNSLGHLYVLYN
 ITTVIVPVVVVFLFLILIRRALSASQKKKVIIAALRTPQNTISIPYASQREAEHATLLSMVMVFLCSV
 PYATLVVYQTVLNVDPDTSVFLLLTAVWLPKVSLLANPVLFLTVNKSVRKCLIGTLVQLHHRYSRRNVST
 GSGMAEASLEPSIRSGSQLLEMFHIGQQQIFKPTEDDEESEAKYIGSADFQAKEIFSTCLEGEQGPQFAP
 SAPPLSTVDSVSQVAPAAPVEPETFPDKYSLQFGFPELPPQWLSETRNSKKRLLPPLGNTPEELIQTK
 VPKVGRVERKMSRNNKVSIFPKVDS

SGP**TRRRLE** - GFP Tag - V

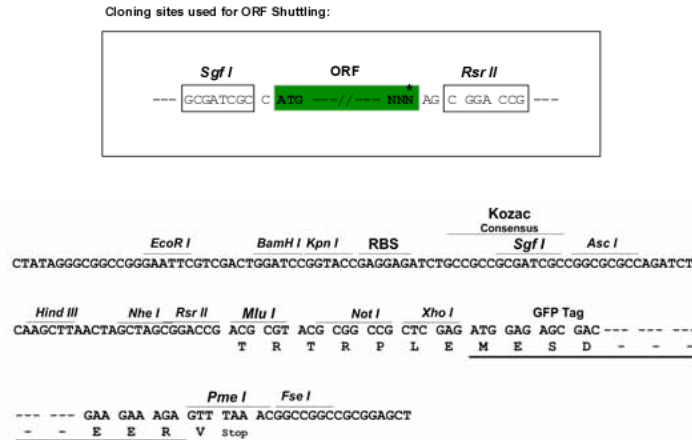
Chromatograms:

https://cdn.origene.com/chromatograms/ja2049_f05.zip

Restriction Sites:

Sgfl-RsrII

Cloning Scheme:



ACCN: NM_007223

ORF Size: 1545 bp

OTI Disclaimer: Due to the inherent nature of this plasmid, standard methods to replicate additional amounts of DNA in E. coli are highly likely to result in mutations and/or rearrangements. Therefore, OriGene does not guarantee the capability to replicate this plasmid DNA. Additional amounts of DNA can be purchased from OriGene with batch-specific, full-sequence verification at a reduced cost. Please contact our customer care team at custsupport@origene.com or by calling 301.340.3188 option 3 for pricing and delivery.

The molecular sequence of this clone aligns with the gene accession number as a point of reference only. However, individual transcript sequences of the same gene can differ through naturally occurring variations (e.g. polymorphisms), each with its own valid existence. This clone is substantially in agreement with the reference, but a complete review of all prevailing variants is recommended prior to use. [More info](#)

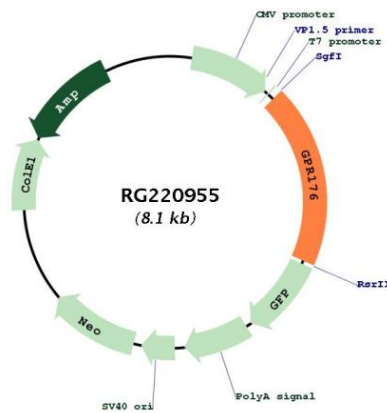
OTI Annotation: This clone was engineered to express the complete ORF with an expression tag. Expression varies depending on the nature of the gene.

Components: The ORF clone is ion-exchange column purified and shipped in a 2D barcoded Matrix tube containing 10ug of transfection-ready, dried plasmid DNA (reconstitute with 100 ul of water).

- Reconstitution Method:
1. Centrifuge at 5,000xg for 5min.
 2. Carefully open the tube and add 100ul of sterile water to dissolve the DNA.
 3. Close the tube and incubate for 10 minutes at room temperature.
 4. Briefly vortex the tube and then do a quick spin (less than 5000xg) to concentrate the liquid at the bottom.
 5. Store the suspended plasmid at -20°C. The DNA is stable for at least one year from date of shipping when stored at -20°C.

RefSeq: [NM_007223.3](#)
RefSeq Size: 4542 bp
RefSeq ORF: 1548 bp
Locus ID: 11245
UniProt ID: [Q14439](#)
Cytogenetics: 15q14-q15.1
Domains: 7tm_1
Protein Families: Druggable Genome, GPCR, Transmembrane
Gene Summary: Members of the G protein-coupled receptor family, such as GPR176, are cell surface receptors involved in responses to hormones, growth factors, and neurotransmitters (Hata et al., 1995 [PubMed 7893747]).[supplied by OMIM, Jul 2008]

Product images:



Circular map for RG220955