

Product datasheet for **RG220921**

Frizzled 2 (FZD2) (NM_001466) Human Tagged ORF Clone

Product data:

Product Type:	Expression Plasmids
Product Name:	Frizzled 2 (FZD2) (NM_001466) Human Tagged ORF Clone
Tag:	TurboGFP
Symbol:	Frizzled 2
Synonyms:	fz-2; Fz2; fzE2; hFz2; OMOD2
Mammalian Cell Selection:	Neomycin
Vector:	pCMV6-AC-GFP (PS100010)
E. coli Selection:	Ampicillin (100 ug/mL)



[View online »](#)

ORF Nucleotide Sequence:

>RG220921 representing NM_001466
 Red=Cloning site Blue=ORF Green=Tags(s)

ATGCGGCCCGCAGCGCCCTGCCCGCCTGCTGCTGCCGCTGCTGCTGCTGCCCGCCGCCGGCCGGCCGCC
 AGTTCCACGGGGAGAAGGGCATCTCCATCCCGGACCACGGCTTCTGCCAGCCCATCTCCATCCCGTGTG
 CACGGACATCGCCTACAACCAGACCATCATGCCAACCTTCTGGGCCACACGAACCAGGAGACGCAGGC
 CTAGAGGTGACACAGTTCTATCCGCTGGTGAAGGTGACAGTGTGCGCCGAAGTGCCTTCTCTGTGCT
 CCATGTACGCACCCGTGTGCACCGTGTGGAACAGGCCATCCCGCGTGCCTCTATCTGTGAGCGCGC
 GCGCCAGGGTGCAGAGCCCTCATGAACAAGTTCGGTTTTAGTGGCCGAGCGCTGCGTGCAGCAC
 TCCCGCGCCACGGCGCCGAGCAGATCTGCGTCCGCCAGAACCCTCCGAGGACGGAGCTCCCGCGTAC
 TCACCACCGCGCCCGCCGGGACTGCAGCCGGGTGCCGGGGCACCCCGGGTGGCCGGGCGCGCGG
 CGCTCCCGCGCTACGCCACGCTGGAGCACCCCTTCCACTGCCCGCGCTCCTCAAGGTGCCATCTAT
 CTCAGCTACAAGTTTCTGGGCGAGCGTGATTGTGCTGCCCGCTGCGAACCTGCGCGGCCGATGGTTCCA
 TGTCTTCTCACAGGAGGAGACGCGTTTCGCGCGCCTCTGGATCCTCACCTGGTCCGGTGTGTGCTGCGC
 TTCCACCTTCTCACTGTACCACGTAATTGGTAGACATGCAGCGCTTCCGCTACCCAGAGCGGCCATC
 ATTTTTCTGTCGGGCTGTACACCATGGTGTCCGGTGGCTACATCGCGGGCTTCTGCTCCAGGAGCGCG
 TGGTGTGCAACGAGCGCTTCTCCGAGGACGGTTACCGCACGGTGGTGCAGGGCACCAAGAAGGAGGGCTG
 CACCATCTCTTATGATGCTCTACTTCTTACGATGGCCAGCTCCATCTGGTGGGTATCCTGTGCTC
 ACCTGGTCTTCCGAGCCGGCATGAAGTGGGGCCACGAGGCCATCGAGGCCAACTCTCAGTACTTCCACC
 TGGCCGCTGGCCGTGCCGGCGTCAAGACCATCACCATCCTGGCCATGGCCAGATCGACGGCGACCT
 GCTGACGGCGTGTGCTTCTGAGCCCTCAACAGCCTGGACCCGCTGCGGGGCTTCTGTGCTAGCCGCTC
 TTCGTGTACCTGTTTATCGGCACGTCCTTCTCCTGGCCGCTTCTGTGCTCTTCCGATCCGCACCA
 TCATGAAGCACGACGGCACCAAGACCGAAAAGCTGGAGCGGCTCATGGTGCATCGCGCTTCTCCGT
 GCTCTACACAGTCCCGCCACCATCGTATCGCTTGTACTTCTACGAGCAGGCTTCCGCGAGCACTGG
 GAGCGCTCGTGGGTGAGCCAGCACTGCAAGAGCCTGGCCATCCCGTCCCGGCGCACTACACGCCGCGCA
 TGTGCGCCGACTTACGGTCTACATGATCAAATACCTCATGACGCTCATCGTGGGCATCACGTGGGCTT
 CTGGATCTGGTCCGGCAAGACGCTGCACCTCGTGGAGGAAGTTCTACACTCGCCTACCAACAGCCGACAC
 GGTGAGACCACCGTG

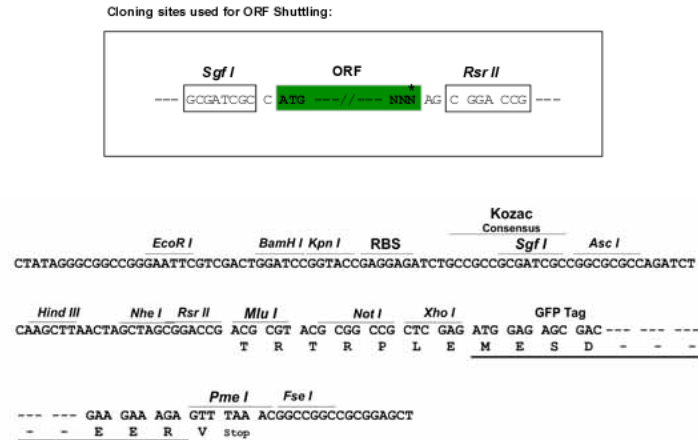
Protein Sequence:

>RG220921 representing NM_001466
 Red=Cloning site Green=Tags(s)

MRPRSALPRLPLPLLLPAAGPAQFHGKGISIPDHGFCQPISIPLCTDIAYNQTIMPNLLGHTNQEDAG
 LEVHQFYPLVKVQCSPFLRFFLCSMYAPVCTVLEQAIPPCRSICERARQGCEALMNKFGFQWPERLRCEH
 FPRHGAEQICVGNHSEHGAPALLTTAPPPLQPGAGGTPGGPGGGAPPYATLEHPFHCPRLKVP
 LSYKFLGERDCAAPCEPARPDGSMFFSQEETRFARLWILTWSVLCCASTFFVTYLVDMQRFYPERPI
 IFLSGCTMVSVAIYAGFVLQERVVNERFSEDGYRTVVQGTKEGCTILFMMLYFFSMASIIWWVILSL
 TWFLAAGMKWGHEAIEANSQYFHLAAWAVPAVKTITILAMQIDGDLISGVCFVGLNSLDPLRGLVAPL
 FVYLFIGTSFLLAGFVSLFRIRTIMKHDGKTEKLERLMVRIGVFSVLYTVPATIVIACYFYEQAFREHW
 ERSWVSQHCPSLAIPCPAHTPRMSPDFTVYMIKYLMTLIVGITSGFWIWSGKTLHSWRKFYTRLTNSRH
 GETTV

Restriction Sites:

Sgfl-RsrII

Cloning Scheme:


ACCN: NM_001466

ORF Size: 1695 bp

OTI Disclaimer: The molecular sequence of this clone aligns with the gene accession number as a point of reference only. However, individual transcript sequences of the same gene can differ through naturally occurring variations (e.g. polymorphisms), each with its own valid existence. This clone is substantially in agreement with the reference, but a complete review of all prevailing variants is recommended prior to use. [More info](#)

OTI Annotation: This clone was engineered to express the complete ORF with an expression tag. Expression varies depending on the nature of the gene.

Components: The ORF clone is ion-exchange column purified and shipped in a 2D barcoded Matrix tube containing 10ug of transfection-ready, dried plasmid DNA (reconstitute with 100 ul of water).

Reconstitution Method:

1. Centrifuge at 5,000xg for 5min.
2. Carefully open the tube and add 100ul of sterile water to dissolve the DNA.
3. Close the tube and incubate for 10 minutes at room temperature.
4. Briefly vortex the tube and then do a quick spin (less than 5000xg) to concentrate the liquid at the bottom.
5. Store the suspended plasmid at -20°C. The DNA is stable for at least one year from date of shipping when stored at -20°C.

RefSeq: [NM_001466.4](#)

RefSeq Size: 3834 bp

RefSeq ORF: 1698 bp

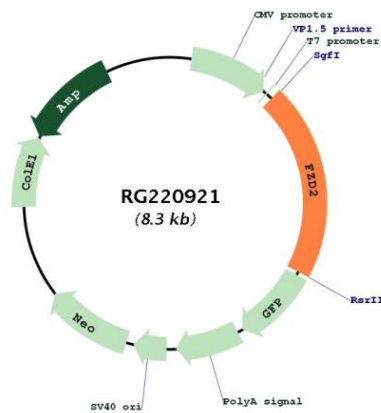
Locus ID: 2535

UniProt ID: [Q14332](#)

Cytogenetics: 17q21.31

Domains:	FRI, Frizzled
Protein Families:	Druggable Genome, GPCR, Transmembrane
Protein Pathways:	Basal cell carcinoma, Colorectal cancer, Melanogenesis, Pathways in cancer, Wnt signaling pathway
MW:	63.6 kDa
Gene Summary:	This intronless gene is a member of the frizzled gene family. Members of this family encode seven-transmembrane domain proteins that are receptors for the wntless type MMTV integration site family of signaling proteins. This gene encodes a protein that is coupled to the beta-catenin canonical signaling pathway. Competition between the wntless-type MMTV integration site family, member 3A and wntless-type MMTV integration site family, member 5A gene products for binding of this protein is thought to regulate the beta-catenin-dependent and -independent pathways. [provided by RefSeq, Dec 2010]

Product images:



Circular map for RG220921