

Product datasheet for **RG220914**

MBD1 (NM_015846) Human Tagged ORF Clone

Product data:

Product Type:	Expression Plasmids
Product Name:	MBD1 (NM_015846) Human Tagged ORF Clone
Tag:	TurboGFP
Symbol:	MBD1
Synonyms:	CXXC3; PCM1; RFT
Mammalian Cell Selection:	Neomycin
Vector:	pCMV6-AC-GFP (PS100010)
E. coli Selection:	Ampicillin (100 ug/mL)



[View online »](#)

ORF Nucleotide Sequence:

>RG220914 representing NM_015846
 Red=Cloning site Blue=ORF Green=Tags(s)

TTTTGTAATACGACTCACTATAGGGCGGCCGGGAATTCGTCGACTGGATCCGGTACCGAGGAGATCTGCC
 GCC**CGCATCGCC**

ATGGCTGAGGACTGGCTGGACTGCCCGCCCTGGCCCTGGCTGGAAGCGCCGGAAGTCTTTCGAAGT
 CAGGGGCCACCTGTGGACGCTCAGACACCTATTACCAGAGCCACAGGAGACAGGATCCGAAGCAAAGT
 TGAGCTGACTCGATACCTGGGCCCTGCGTGTGATCTCACCTCTTCGACTTCAAACAAGGCATCTTGTGC
 TATCCAGCCCCAAGGCCATCCCGTGGCGGTTGCCAGCAAGAAGCGAAAGAAGCCTTCAAGGCCAGCCA
 AGACTCGAAACGTCAGGTTGGACCCAGAGTGGTGGAGTTCAGGAAGGAGGCCCGAGGGATGAGACCAA
 GGCTGACACTGACACAGCCCCAGCTTCATTCCCTGCTCCTGGGTGCTGTGAGAACTGTGGAATCAGCTTC
 TCAGGGATGGCACCCAAAGGCAGCGGCTCAAACGTTGTCAAAGACTGTCGAGCACAGAGAATTGCCT
 TCAACCGGAACAGAGAATGTTAAGCGTGTGGGCTGTGGGGAGTGTGCAGCCTGCCAGGTAACAGAAGA
 CTGTGGGGCTGCTCCACTGCCTCCTGCAGCTGCCCCATGATGTGGCATCGGGGCTGTTCTGCAAGTGT
 GAACGGAGACGCTGCCTCCGATTGTGGAAGGAGCCAGGGTGTGGAGTATGCCGGGGCTGTGAGACCC
 AAGAGGATTGTGGCCATTGCCCATCTGCCTTCGCCCTCCCCGCCCTGGTCTCAGGCGCCAGTGGAAATG
 TGTCCAGCGACGTTGCCTACGGGGTAAACATGCCCGCCGCAAGGGAGGCTGTGACTCCAAGATGGCTGCC
 AGGCGGCGCCCCGGAGCCAGCCACTGCCTCCACCACCCCATCACAGTCCCAGAGCCACAGAGCCGC
 ACCCCAGAGCCCTGGCCCCCTCGCCACCTGCCGAGTTCATCTATTACTGTGTAGACGAGGACGAGCTACA
 GCCCTACACGAACCGCCGCGAGAACCAGCAAGTGCAGGGCTGTGCAGCCTGCCTACGGCGGATGGACTGT
 GGCCGCTGCGACTTCTGCTGCGACAAGCCAAATTCGGGGGAGCAACCAGAAGCCAGAAAGTGTGCTGTT
 GCGCCAATGCCAGTTCAGTTGCCATGAAGCGGCTGTGCCAGTGTCTGGTTCAGAGTCTGAGGATGGGGC
 AGGATCGCCCCACCTTACCGTGTGCGAAAGAGGCCAGCTCTGCCCGAGCGGACCATCTTGGCCCTACC
 TTGAAGCCACCTTGGCTACACGCACAGCCAAACCAGACCATACCCAGGCTCCAACGAAGCAGGAAGCAG
 GTGGTGGCTTTGTGCTGCCCGCCCTGGCACTGACCTTGTGTTTTACGGGAAGGCGCAAGCAGTCTGT
 GCAGGTGCCGGGCCCTGTTGCAGCTTCCACAGAAGCCCTGTTGCAGGAGGCCAGTGTCTGGCCTGAGT
 TGGGTTGTGGCCTTACCCAGGTGAAGCAAGAGAAGGCGGATACCCAGGACGAGTGGACACCAGGCACAG
 CTGTCTGACTTCTCCCGTATTGGTGCCTGGCTGCCCTAGCAAGGACGAGTACCCAGGCCTGCCTTCTGT
 GAAGCAAGAGCCACTGACCCAGAGGAGGACAAGGAGGAGAACAAGGATGATTCTGCCTCCAAATTTGGCC
 CCAGAGGAAGAGGAGGAGGGGCTGGCACACCCGTGATCAGGAGATTTTCAGCCTGGGTGGAACCCGCT
 TCCGAGATACAGCAGTCTGGTTGCCAAGGTCAAAGACCTAAAAACCTGGAGCTAGAAAGCAG

ACGCGTACGCGGCCGCTCGAG – GFP Tag – GTTTAA

Protein Sequence:

>RG220914 representing NM_015846
 Red=Cloning site Green=Tags(s)

MAEDWLDPCALGPGWKREVFVRKSGATCGRSPTYYSPTGDRIRSKVELTRYLGPACDLTLFDFKQGILC
 YPAPKAHPVAVASKRKRKPSRPAKTRKRQVGPQSGEVRKEAPRDETKADTDTAPASFPAGCCENGISF
 SGDGTQRQLKTLCKDCRAQRIAFNREQRMFKRVGCGEAAQVTEDCGACSTCLLQLPHDVASGLFCKC
 EERRRCLRIVERSRGCVCRCGQTQEDCGHCPICLRPPRPLRRQWKCVQRRCLRGKHARRKGGCDKMAA
 RRRPGAQPLPPPPPSQSPEPTEPHPRALAPSPPAEFIYYCVDDELQPYTNRRQNRKCGACAACLRRMDC
 GRCDFCCDKPKFGGSNQKRQKCRWRQCLQFAMKRLLPSVWSESEDGAGSPPPYRRRKRPSARRHHLGPT
 LKPTLATRTRTAQPDHTQAPTKQEAGGGFVLPPTGDLVFLREGASSPVQVPGPVAASTEALLQEAQCSGLS
 WVVALPQVKQEKADTQDEWTPGTAVLTSPLVPGCPSKAVDPGLPSVKQEPDPPEEDKEENKDDSAKSLA
 PEEEAAGGAGTPVITEIFSLGGTRFRDVAVWLPRSKDLKKPGARKQ

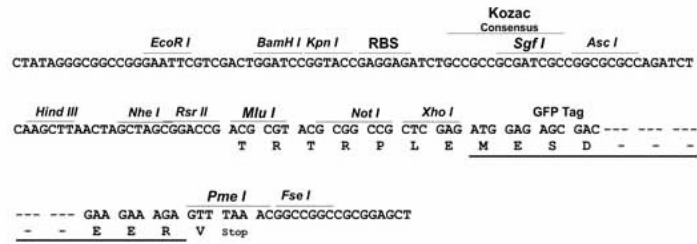
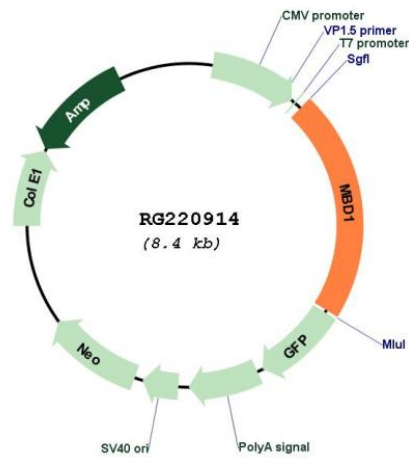
TRTRPLE – GFP Tag – V

Restriction Sites:

Sgfl-MluI

Cloning Scheme:

Cloning sites used for ORF Shutting:


Plasmid Map:


ACCN: NM_015846

ORF Size: 1815 bp

OTI Disclaimer:	The molecular sequence of this clone aligns with the gene accession number as a point of reference only. However, individual transcript sequences of the same gene can differ through naturally occurring variations (e.g. polymorphisms), each with its own valid existence. This clone is substantially in agreement with the reference, but a complete review of all prevailing variants is recommended prior to use. More info
OTI Annotation:	This clone was engineered to express the complete ORF with an expression tag. Expression varies depending on the nature of the gene.
Components:	The ORF clone is ion-exchange column purified and shipped in a 2D barcoded Matrix tube containing 10ug of transfection-ready, dried plasmid DNA (reconstitute with 100 ul of water).
Reconstitution Method:	<ol style="list-style-type: none">1. Centrifuge at 5,000xg for 5min.2. Carefully open the tube and add 100ul of sterile water to dissolve the DNA.3. Close the tube and incubate for 10 minutes at room temperature.4. Briefly vortex the tube and then do a quick spin (less than 5000xg) to concentrate the liquid at the bottom.5. Store the suspended plasmid at -20°C. The DNA is stable for at least one year from date of shipping when stored at -20°C.
RefSeq:	NM_015846.3
RefSeq Size:	2961 bp
RefSeq ORF:	1818 bp
Locus ID:	4152
UniProt ID:	Q9UIS9
Cytogenetics:	18q21.1
Protein Families:	Druggable Genome, Transcription Factors
Gene Summary:	The protein encoded by this gene is a member of a family of nuclear proteins related by the presence of a methyl-CpG binding domain (MBD). These proteins are capable of binding specifically to methylated DNA, and some members can also repress transcription from methylated gene promoters. This protein contains multiple domains: MBD at the N-terminus that functions both in binding to methylated DNA and in protein interactions; several CXXC-type zinc finger domains that mediate binding to non-methylated CpG dinucleotides; transcriptional repression domain (TRD) at the C-terminus that is involved in transcription repression and in protein interactions. Numerous alternatively spliced transcript variants encoding different isoforms have been noted for this gene.[provided by RefSeq, Feb 2011]