

Product datasheet for **RG220897**

RAB27A (NM_004580) Human Tagged ORF Clone

Product data:

Product Type: Expression Plasmids
Product Name: RAB27A (NM_004580) Human Tagged ORF Clone
Tag: TurboGFP
Symbol: RAB27A
Synonyms: GS2; HsT18676; RAB27; RAM
Mammalian Cell Selection: Neomycin
Vector: pCMV6-AC-GFP (PS100010)
E. coli Selection: Ampicillin (100 ug/mL)
ORF Nucleotide Sequence: >RG220897 representing NM_004580
Red=Cloning site Blue=ORF Green=Tags(s)

TTTTGTAATACGACTCACTATAGGGCGCCGGGAATTCGTCGACTGGATCCGGTACCGAGGAGATCTGCC
GCC**CGATCGCC**

ATGTCTGATGGAGATTATGATTACCTCATCAAGTTTTAGCTTTGGGAGACTCTGGTGTAGGAAGACCA
GTGTACTTTACCAATATACAGATGGTAAATTTAACTCAAATTTATCACAAAGTGGCATTGATTTTCAG
GGAAAAAGAGTGGTGTACAGAGCCAGTGGCCGGATGGAGCCACTGGCAGAGGCCAGAGAATCCACCTG
CAGTTATGGGACACAGCAGGGCAGGAGAGGTTTCGTAGCTTAACGACAGCGTTCTTCAGAGATGCTATGG
GTTTTCTCTACTTTTTGATCTGACAAATGAGCAAAGTTTCTCAATGTCAGAACTGGATAAGCCAGCT
ACAGATGCATGCATATTGTGAAAACCCAGATATAGTGCTGTGTGAAACAAGAGTGATCTGGAGGACCAG
AGAGTAGTGAAAGAGGAGGAAGCCATAGCACTCGCAGAGAAATATGGAATCCCCTACTTTGAAACTAGT
CTGCCAATGGGACAAACATAAGCCAAGCAATTGAGATGCTTCTGGACCTGATAATGAAGCGAATGGAACG
GTGTGTGGACAAGTCCTGGATTCTGAAGGAGTGGTGCATCAAATGGTCATGCCTCTACGGATCAGTTA
AGTGAAGAAAAGGAGAAAGGGCATGTGGCTGT

ACGCGTACGCGGCCGCTCGAG - GFP Tag - GTTTAA



[View online »](#)

Protein Sequence: >RG220897 representing NM_004580
Red=Cloning site Green=Tags(s)

MSDGDYDYLKFLALGDSGVGKTSVLYQYTDGKFNKSFITTVGIDFREKRVVYRASGPDGATGRGQRIHL
 QLWDTAGQERFRSLTTAFFRDAMGFLLLFDLTNEQSFLNVRNWI SQLQMAYCENPDIVLCGNKSDLEDQ
 RVVKEEEAIALAEKYGIPYFETSAAANGTNISQAIEMLLDLIMKRMERCVDKSWIPEGVVRNSNGHASTDQL
 SEEKEKGACGC

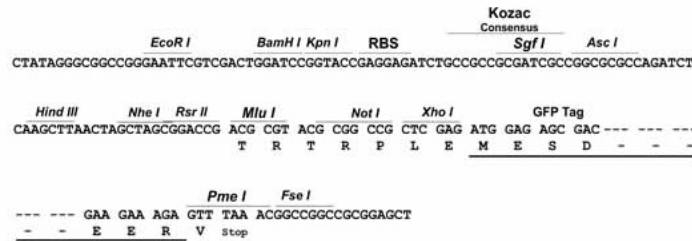
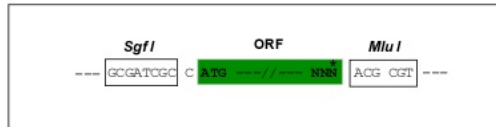
TRTRPLE - GFP Tag - V

Chromatograms: https://cdn.origene.com/chromatograms/ja2025_b05.zip

Restriction Sites: SgfI-MluI

Cloning Scheme:

Cloning sites used for ORF Shuttling:



ACCN: NM_004580

ORF Size: 663 bp

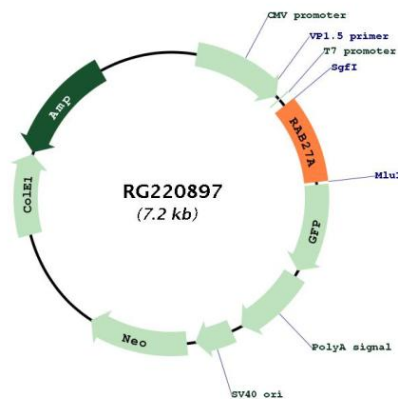
OTI Disclaimer: Due to the inherent nature of this plasmid, standard methods to replicate additional amounts of DNA in E. coli are highly likely to result in mutations and/or rearrangements. Therefore, OriGene does not guarantee the capability to replicate this plasmid DNA. Additional amounts of DNA can be purchased from OriGene with batch-specific, full-sequence verification at a reduced cost. Please contact our customer care team at custsupport@origene.com or by calling 301.340.3188 option 3 for pricing and delivery.

The molecular sequence of this clone aligns with the gene accession number as a point of reference only. However, individual transcript sequences of the same gene can differ through naturally occurring variations (e.g. polymorphisms), each with its own valid existence. This clone is substantially in agreement with the reference, but a complete review of all prevailing variants is recommended prior to use. [More info](#)

OTI Annotation: This clone was engineered to express the complete ORF with an expression tag. Expression varies depending on the nature of the gene.

Components:	The ORF clone is ion-exchange column purified and shipped in a 2D barcoded Matrix tube containing 10ug of transfection-ready, dried plasmid DNA (reconstitute with 100 ul of water).
Reconstitution Method:	<ol style="list-style-type: none"> 1. Centrifuge at 5,000xg for 5min. 2. Carefully open the tube and add 100ul of sterile water to dissolve the DNA. 3. Close the tube and incubate for 10 minutes at room temperature. 4. Briefly vortex the tube and then do a quick spin (less than 5000xg) to concentrate the liquid at the bottom. 5. Store the suspended plasmid at -20°C. The DNA is stable for at least one year from date of shipping when stored at -20°C.
RefSeq:	<u>NM_004580.5</u>
RefSeq Size:	2824 bp
RefSeq ORF:	666 bp
Locus ID:	5873
UniProt ID:	<u>P51159</u>
Cytogenetics:	15q21.3
Domains:	ras, RAN, RAS, RHO, RAB
Protein Families:	Druggable Genome
Gene Summary:	The protein encoded by this gene belongs to the small GTPase superfamily, Rab family. The protein is membrane-bound and may be involved in protein transport and small GTPase mediated signal transduction. Mutations in this gene are associated with Griscelli syndrome type 2. Alternative splicing occurs at this locus and four transcript variants encoding the same protein have been identified. [provided by RefSeq, Jul 2008]

Product images:



Circular map for RG220897