

Product datasheet for **RG220879**

PCDHA10 (NM_031859) Human Tagged ORF Clone

Product data:

Product Type:	Expression Plasmids
Product Name:	PCDHA10 (NM_031859) Human Tagged ORF Clone
Tag:	TurboGFP
Symbol:	PCDHA10
Synonyms:	CNR8; CNRN8; CNRS8; CRNR8; PCDH-ALPHA10
Mammalian Cell Selection:	Neomycin
Vector:	pCMV6-AC-GFP (PS100010)
E. coli Selection:	Ampicillin (100 ug/mL)



[View online »](#)

ORF Nucleotide
Sequence:

>RG220879 representing NM_031859
 Red=Cloning site Blue=ORF Green=Tags(s)

TTTTGTAATACGACTCACTATAGGGCGGCCGGGAATTCGTCGACTGGATCCGGTACCGAGGAGATCTGCC
 GCC**CGGATCGCC**

ATGGTTCCAGATGTAGCTGCCTGGGGTCCAGTGTCTGTCTCGTCTTCTCCTCGCAGCCTGGG
 AGGTGGGAGCGCCAGCTCCACTACTCAGTCTACGAGGAGGCCAGACACGGCACCTTCGTGGCCGCAT
 CGCGCAGGACCTGGGGCTGGAGCTGGCGGAGCTGGTGCAGCGCCTGTTCCGGGTGGCGTCCAAAAGACAC
 GGGGACCTTCTGGAGGTAATCTGCAGAAATGGCATTGTTTGTGAATTCTCGGATTGACCGCGAGGAGC
 TGTGCGGGCGGAGCGTGGAGTGCAGCATCCACCTGGAGGTGATCGTGGACAGGCCGCTGCAGTTTTCCA
 TGTGGACGTGGAAGTGAAGGACATTAACGACAACCCGCCAGGTTCTCCGTAACAGAACAAAAGCTCTCA
 ATACCTGAATCCAGACTGCTTGACTCTCGATTTCCACTAGAAGGCGCATCTGATGCGGATGTTGGAGAGA
 ACGCATTGCTTACTTACAACTCAGTCCAAATGAGTATTTGTTCTTGATATTATAAACAAAAAAGACAA
 AGACAAATCCCAGTGTGTTCTGCGGAAGCTGCTGGATCGTGAAGAAAATCCTCAGCTAAAGTTGTTG
 TTGACAGCAACTGATGGAGGCAAACCTGAATTTACCGGATCTGTTTCTCTGCTGATCCTGGTGTAGATG
 CCAATGATAACGCCCTATCTTTGACAGACCGGTTTATGAAGTTAAGATGTATGAAAATCAAGTGAACCA
 AACATTAGTAATACGGCTCAACGCTTCTGATTCGGATGAAGGAATAACAAGGAAATGATGATTCATTT
 AGCTCTTTGGTCCCACCCACGATAAGAAGGAAATTTGGATAAACGAAAGGACGGGAGAAATAAAGTAA
 ATGATGCTATTGACTTTGAGGACAGTAACACTTATGAAATTCATGTAGATGTTACAGATAAGGGAAACCC
 ACCTATGGTTGGTCACTGCACGGTCTAGTGGAAGTACTGGATGAAAATGATAATCACCTGAGGTGATT
 GTCACCTCTCTGTCTCTCCAGTAAAGAAGATGCTCAAGTGGCACCGTCAATTGCCCTAATCAGCGTTT
 CTGACCATGATTGAGGACCAACGGACAGGTACCTGCTCTGACGCCTCACGTTCCGTTCAAGTGGT
 GTCACCTACAAGAATTACTACTCATTGGTGTCTGGACAGCGCTCTGGACCGGAGAGGGTGTCCGCCAT
 GAGCTGGTGGTACCAGCGGGACGGGGCTCGCCTCCGCTGTGGGCCACGGCCAGCGTGTCTGTGGAGG
 TGGCCGACGTGAACGACAACCGCCTGCGTTCGCGCAGTCCGAGTACACGGTGTTCGTGAAGGAGAACA
 CCCGCCAGGCTGCCACATCTTACGGTGTCTGCGTGGGACCGGACGCGCAGGAGAACGCCCTGGTGTCC
 TACTCTCTGGTGGAGCGGCTTGGGCGAGCGCTCGTGTGAGCTACGTGTGCGTGCACGCGGAGAGCG
 GCAAGGTGACGCGTGCAGCCGCTGGACCACGAGGAGCTGGAGCTGCTACAGTCCAGGTGAGCGCGCG
 CGATGGGGCGTCCGCCCTTGGGCGCAACTGACGCTGCAGGTGTTGCTGCTGGACGAGAACGACAAC
 GCTCCCGCGTGTGGCGTCTCCCGCTGGCAGCGCGGGCGGTGCAGTCAGTGTGAGTGGTGTGCGGTGCG
 TGGTTGCGGGTACGTGGTGGCTAAGGTGCGCGCAGTGGACGCTGACTCTGGATACAACCGTGGCTGTC
 GTATGAATTGCAGTCGGCGGCGGTTGGTGCACGCATCCCGTTTCGCGTGGGGCTGTACACGGGCGAGATC
 AGTACGACGCGCGCTCTGGATGAGACTGACTCGCCACGCCAGCGCCTACTGGTGTGGTGAAGGACCATG
 GCGAGCCGTGCTGACGGCCACGGCCACTGTGCTTGTGTCGCTTGTGGAGGGCAGCCAGGACCCAAAGGC
 CTCGTGCGGGGCTTCAAGTGGCGTGGCGCCGAGGTGGCCCTGGTGGATGTCAACGTGTACCTGATCATC
 GCCATCTGCGCGGTGTCCAGCTTGTGGTGTCTCACGCTGCTGTACTGACTGAGGTGCTCGGCGG
 CGCCACCGAGGGCGCATGTGGCCGGTGAAGCCACGCTGGTGTGCTCTAGCGCGTGGGAGCTGGTC
 TTAATCGCAGCAGAGGGCGCAGAGGGTGTGTTCTGGGAGGGCCTGCCAAGGCGGACCTCATGGCCTTC
 AGCCCCAGCCTTCCACCATGCCAATGGTAGATGTGGACGGGGAAGATCAGTCTATTGGAGGGGACCAT
 CTAGGAAGGTGGGTTATTACGTTTTCATTTTCTTTTGTCTTTATGAATAATTTTTCTTTACCGCAT
 TTTCTCAAATATGTATCAGAATATTTTCTTTTGTCTACATTCCATTTATGCTTGAATTTTCTAGTGAT
 ACCTTTGTAATA

AGCGGACCGACGCGTACGCGGCCGCTCGAG – GFP Tag – GTTTAA

Protein Sequence: >RG220879 representing NM_031859
 Red=Cloning site Green=Tags(s)

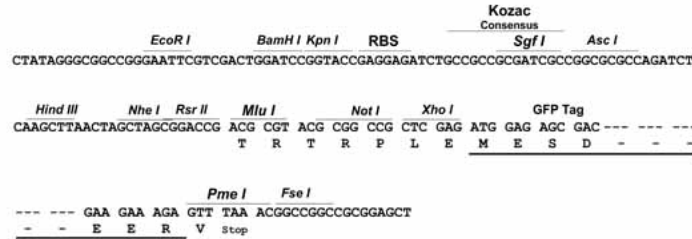
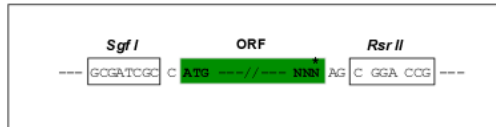
MVSRCSCLGVQCLLLSLLLLAAWEVGSQQLHYSVYEEARHGTFVGRQAQDLGLELAELVQRLFRVASKRH
 GDLLLEVNLRQNGILFVNSRIDREELCGRSVECSIHLEVIIVDRPLQVFHVDVEVKDINDNPPRFVTEQKLS
 IPESRLLDLDRFPLEGASDADVGENALLTYKLSVNEVFLDIINKKDKDKFPVLRKLLDREENPQLKLL
 LTATDGGKPEFTGSVLLILVLDANDNAPIFDRPVYEVKMYENQVNQTLVIRLNASDSDEGINKEMMYSF
 SSLVPPTIRRKFWINERTGEIKVNDIDFEDSNTYIEHVDVTDKGNPPMVGHCTVLVELLDENDNSPEVI
 VTSLSLPVKEDAQVGTVIALISVSDHDSGANGQVTCSLTPHVPFKLVSTYKNYSLVLDSDALDRERSAY
 ELVVTARDGGSPPLWATASVSVEVADVNDNAPAFQSEYTVFVKENPPGCHIFTVSAWDADAQENALVS
 YSLVERRLGERLSSVSVHAESGKYYALQPLDHEEELLQFQVSARDGGVPLGSLTLQVFLDENDN
 APALLASPAGSAGGAVSELVLRVSVAGHVVAKVRVAVDADSGYNWLSEYELQSAAVGARIPFRVGLYTGEI
 STTRALDETDSPRQRLVLVKDHGEPSTATATVLSLVEGSQAPKASSRASVGVAVEVALVDVNVYLI
 AICAVSSLLVLTLLLYTALRCSAAPTREGACGPVKPTLVCSAVGWSYSQQRRQRVCSGGLPKADLMAF
 SPSLPPCPMVDVDGEDQSIGGDHSRKGYYVVFIFLLCFMNNIFSYRIFSNMYQNISFLSTFHLCLNISSD
 TFVI

SGPTRRRLE - GFP Tag - V

Restriction Sites: Sgfl-RsrII

Cloning Scheme:

Cloning sites used for ORF Shuttling:



ACCN: NM_031859

ORF Size: 2532 bp

OTI Disclaimer: The molecular sequence of this clone aligns with the gene accession number as a point of reference only. However, individual transcript sequences of the same gene can differ through naturally occurring variations (e.g. polymorphisms), each with its own valid existence. This clone is substantially in agreement with the reference, but a complete review of all prevailing variants is recommended prior to use. [More info](#)

OTI Annotation: This clone was engineered to express the complete ORF with an expression tag. Expression varies depending on the nature of the gene.

Components: The ORF clone is ion-exchange column purified and shipped in a 2D barcoded Matrix tube containing 10ug of transfection-ready, dried plasmid DNA (reconstitute with 100 ul of water).

Reconstitution Method:

1. Centrifuge at 5,000xg for 5min.
2. Carefully open the tube and add 100ul of sterile water to dissolve the DNA.
3. Close the tube and incubate for 10 minutes at room temperature.
4. Briefly vortex the tube and then do a quick spin (less than 5000xg) to concentrate the liquid at the bottom.
5. Store the suspended plasmid at -20°C. The DNA is stable for at least one year from date of shipping when stored at -20°C.

RefSeq: [NM_031859.3](#)

RefSeq Size: 2535 bp

RefSeq ORF: 2535 bp

Locus ID: 56139

UniProt ID: [Q9Y5I2](#)

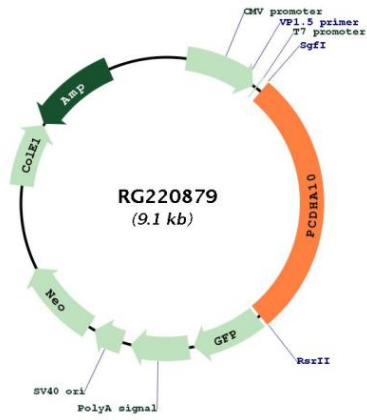
Cytogenetics: 5q31.3

Domains: CA

Protein Families: Secreted Protein

Gene Summary: This gene is a member of the protocadherin alpha gene cluster, one of three related gene clusters tandemly linked on chromosome five that demonstrate an unusual genomic organization similar to that of B-cell and T-cell receptor gene clusters. The alpha gene cluster is composed of 15 cadherin superfamily genes related to the mouse CNR genes and consists of 13 highly similar and 2 more distantly related coding sequences. The tandem array of 15 N-terminal exons, or variable exons, are followed by downstream C-terminal exons, or constant exons, which are shared by all genes in the cluster. The large, uninterrupted N-terminal exons each encode six cadherin ectodomains while the C-terminal exons encode the cytoplasmic domain. These neural cadherin-like cell adhesion proteins are integral plasma membrane proteins that most likely play a critical role in the establishment and function of specific cell-cell connections in the brain. Alternative splicing has been observed and additional variants have been suggested but their full-length nature has yet to be determined. [provided by RefSeq, Jul 2008]

Product images:



Circular map for RG220879