

## Product datasheet for **RG220852**

### **P2X5 (P2RX5) (NM\_175081) Human Tagged ORF Clone**

#### Product data:

Product Type:	Expression Plasmids
Product Name:	P2X5 (P2RX5) (NM_175081) Human Tagged ORF Clone
Tag:	TurboGFP
Symbol:	P2X5
Synonyms:	LRH-1; MGC47755; P2X5; P2x5; P2X5R; purinergic receptor P2X, ligand-gated ion channel, 5; purinergic receptor P2X5
Mammalian Cell Selection:	Neomycin
Vector:	pCMV6-AC-GFP (PS100010)
E. coli Selection:	Ampicillin (100 ug/mL)
ORF Nucleotide Sequence:	>RG220852 representing NM_175081 Red=Cloning site Blue=ORF Green=Tags(s)

TTTTGTAATACGACTCACTATAGGGCGGCCGGAATTCGTCGACTGGATCCGGTACCGAGGAGATCTGCC  
GCC**GCGATCGCC**

ATGGGGCAGGCGGGCTGCAAGGGGCTCTGCCTGTCTGCTGTTTCGACTACAAGACCGAGAAGTATGTCATCG  
CCAAGAACAAGAAGGTGGGCCTGCTGTACCGGCTGCTGCAGGCCTCCATCCTGGCGTACCTGGTCGTATG  
GGTGTTCCTGATAAAGAAGGGTTACCAAGACGTCGACACCTCCCTGCAGAGTGTGTCATCACCAAAGTC  
AAGGGCGTGGCCTTACCAACACCTCGGATCTTGGGCAGCGGATCTGGGATGTCGCCGACTACGTCATTC  
CAGCCCAGGGAGAGAACGTCCTTTTTGTGGTCACCAACCTGATTGTGACCCCAACCAGCGGCAGAACGT  
CTGTGCTGAGAAATGAAGCATTCTGATGGCGCTGCTCCAAGGACAGCGACTGCCACGCTGGGGAAGCG  
GTTACAGCTGAAACGGAGTGAAGACCGCGCTGCTGCGGAGAGAGAACTTGGCCAGGGGCACCTGTG  
AGATCTTTCCTGGTCCCGTTGGAGACAAGCTCCAGGCCGGAG

**ACGCGT**ACGCGGCCGCTCGAG - GFP Tag - GTTTAA

**Protein Sequence:** >RG220852 representing NM\_175081  
Red=Cloning site Green=Tags(s)

MGQAGCKGLCLSLFDYKTEKYVIAKNKKVGLLYRLLQASILAYLVVWVFLIKKGYQDVDTSLQSAVITKV  
KGVAFNTSDLGQRIWDVADYVIPAQGENVFFVVTNLIVTPNQRQNVCAENEGIPDGACSKDSDCHAGEA  
VTAGNVKTGRCLRRENLRARGTCEIFAWCPLETSSRPE

**TRTRPLE** - GFP Tag - V

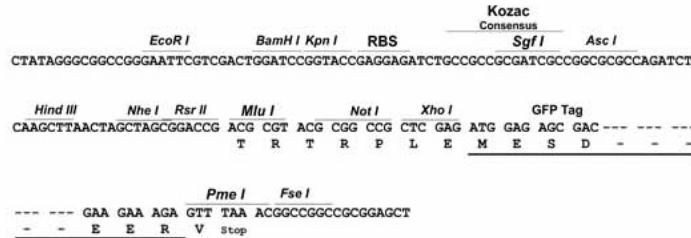
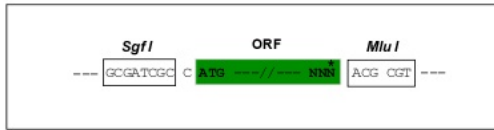


[View online »](#)

Restriction Sites: SgfI-MluI

Cloning Scheme:

Cloning sites used for ORF Shutting:



ACCN: NM\_175081

ORF Size: 534 bp

OTI Disclaimer: The molecular sequence of this clone aligns with the gene accession number as a point of reference only. However, individual transcript sequences of the same gene can differ through naturally occurring variations (e.g. polymorphisms), each with its own valid existence. This clone is substantially in agreement with the reference, but a complete review of all prevailing variants is recommended prior to use. [More info](#)

OTI Annotation: This clone was engineered to express the complete ORF with an expression tag. Expression varies depending on the nature of the gene.

Components: The ORF clone is ion-exchange column purified and shipped in a 2D barcoded Matrix tube containing 10ug of transfection-ready, dried plasmid DNA (reconstitute with 100 ul of water).

Reconstitution Method:

1. Centrifuge at 5,000xg for 5min.
2. Carefully open the tube and add 100ul of sterile water to dissolve the DNA.
3. Close the tube and incubate for 10 minutes at room temperature.
4. Briefly vortex the tube and then do a quick spin (less than 5000xg) to concentrate the liquid at the bottom.
5. Store the suspended plasmid at -20°C. The DNA is stable for at least one year from date of shipping when stored at -20°C.

RefSeq: [NM\\_175081.1](#), [NP\\_778256.1](#)

RefSeq Size: 958 bp

RefSeq ORF: 536 bp

Locus ID: 5026

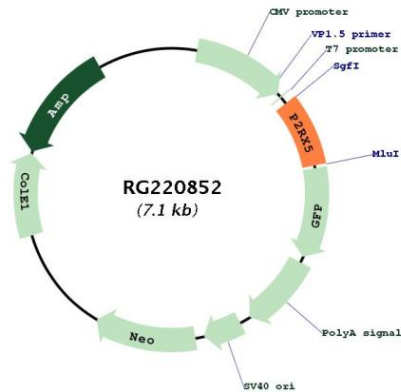
Cytogenetics: 17p13.2

**Protein Families:** Druggable Genome, Ion Channels: ATP Receptors, Transmembrane

**Protein Pathways:** Calcium signaling pathway, Neuroactive ligand-receptor interaction

**Gene Summary:** The product of this gene belongs to the family of purinoceptors for ATP. This receptor functions as a ligand-gated ion channel. Alternative splicing results in multiple transcript variants. Read-through transcription also exists between this gene and the neighboring downstream gene, TAX1BP3 (Tax1 binding protein 3). [provided by RefSeq, Mar 2011]

### Product images:



Circular map for RG220852