

## Product datasheet for **RG220845**

### ZNF664 (NM\_152437) Human Tagged ORF Clone

#### Product data:

Product Type:	Expression Plasmids
Product Name:	ZNF664 (NM_152437) Human Tagged ORF Clone
Tag:	TurboGFP
Symbol:	ZNF664
Synonyms:	ZFOC1; ZNF176
Mammalian Cell Selection:	Neomycin
Vector:	pCMV6-AC-GFP (PS100010)
E. coli Selection:	Ampicillin (100 ug/mL)
ORF Nucleotide Sequence:	>RG220845 ORF sequence, <b>codon optimized</b> . Due to the complexity of NM_152437, the ORF clone is codon optimized for mammalian Expression. The nucleotide sequence differs from the reference sequence, yet the amino acid sequence remains identical.

Red=Cloning site Blue=ORF Green=Tags(s)

TTTTGTAATACGACTCACTATAGGGCGGCCGGAATTCGTCGACTGGATCCGGTACCGAGGAGATCTGCC  
GCC**CGATCGCC**

ATGATCTATAAATGCCCAATGTGCAGGGAATTCCTTAGTGAGAGGGCCGATCTGTTTATGCATCAAAGA  
TTCATACCGCTGAAAAGCCCCACAAGTGCATAAATGCGACAAGGGATTCTCCATATATCCGAATTGCA  
TATCCACTGGCGGGATCACACCGGGGAAAAAGTGTACAAATGTGATGACTGCGGAAAGGACTTTCCACC  
ACAACCAAAGTGAATAGGCATAAGAAGATTCACACAGTTGAGAAGCCCTACAAATGTTATGAGTGCGGCA  
AGGCCTTTAAGTGGTCACTCCACCTGCAGATTCACATGCGAGTGCATACTGGGGAGAAGCCTTACGTATG  
TTCTGAGTGCGGGCGAGGCTTTAGCAATCCAGCAACCTTTGCATGCACCAAAGAGTACACACTGGGGAG  
AAACCCTTAAGTGCGAAGAGTGTGAAAGGCTTTCCGCCATACGAGTTCCCTGTGCATGCACCAGAGGG  
TTCATACGGGAGAAAAGCCCTATAAGTGCTATGAATGTGGAAAGCCTTTAGCCAAAGCAGTTCCCTCTG  
CATACACAGAGGGTGCATACAGGCGAAAAGCCATATCGCTGCTGTGGCTGCGGAAAAGCCTTCTCCCAA  
AGCTCTTCACTGTGATTTCATCAAAGGGTCCACACGGGCGAGAAGCCGTTCAAATGTGACGAATGTGGGA  
AGGCCTTCTCCAGTCAACCTCCCTGTGTATCCACAGAGAGTACATACAAAAGAGCGGAACCACTTGAA  
AATATCCGTGATA

**ACGCGT**ACGCGGCCGCTCGAG - GFP Tag - GTTTAA



[View online »](#)

**Protein Sequence:** >RG220845 representing NM\_152437  
 Red=Cloning site Green=Tags(s)

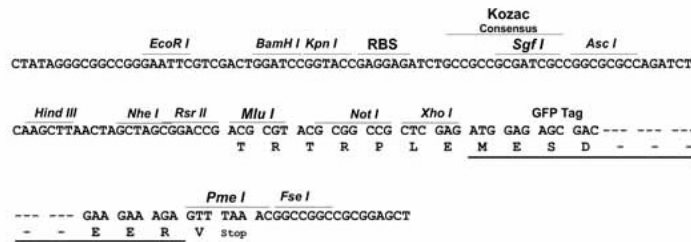
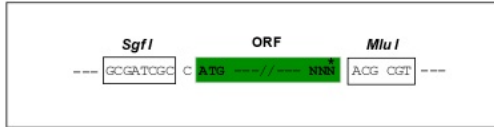
MIYKCPMCREFFSERADLFMHQKIHTAEKPHKCDKCDKGFFHISELHIHWRDHTGEKVYKDDCGKDFST  
 TTKLNRHKKIHTVEKPYKCYECGKAFNWSSHLQIHMRVHTGEKPYVCSECGRGSNSSNLCMHQVRVHTGE  
 KPFKCEECGKAFRHTSSLCMHQVRVHTGEKPYKCYECGKAFSQSSSLCIHQVRVHTGEKPYRCCGCGKAFSQ  
 SSSLCIHQVRVHTGEKPFKCEECGKAFSQSTSLCIHQVRVHTKERNHLKISVI

TRTRPLE - GFP Tag - V

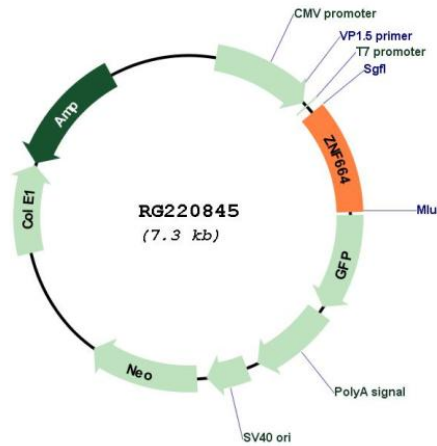
**Restriction Sites:** SgfI-MluI

**Cloning Scheme:**

Cloning sites used for ORF Shutting:



**Plasmid Map:**



**ACCN:** NM\_152437

**ORF Size:** 783 bp

<b>OTI Disclaimer:</b>	The molecular sequence of this clone aligns with the gene accession number as a point of reference only. However, individual transcript sequences of the same gene can differ through naturally occurring variations (e.g. polymorphisms), each with its own valid existence. This clone is substantially in agreement with the reference, but a complete review of all prevailing variants is recommended prior to use. <a href="#">More info</a>
<b>OTI Annotation:</b>	This clone was engineered to express the complete ORF with an expression tag. Expression varies depending on the nature of the gene.
<b>Components:</b>	The ORF clone is ion-exchange column purified and shipped in a 2D barcoded Matrix tube containing 10ug of transfection-ready, dried plasmid DNA (reconstitute with 100 ul of water).
<b>Reconstitution Method:</b>	<ol style="list-style-type: none"><li>1. Centrifuge at 5,000xg for 5min.</li><li>2. Carefully open the tube and add 100ul of sterile water to dissolve the DNA.</li><li>3. Close the tube and incubate for 10 minutes at room temperature.</li><li>4. Briefly vortex the tube and then do a quick spin (less than 5000xg) to concentrate the liquid at the bottom.</li><li>5. Store the suspended plasmid at -20°C. The DNA is stable for at least one year from date of shipping when stored at -20°C.</li></ol>
<b>RefSeq:</b>	<a href="#">NM_152437.2</a> , <a href="#">NP_689650.1</a>
<b>RefSeq Size:</b>	4312 bp
<b>RefSeq ORF:</b>	786 bp
<b>Locus ID:</b>	144348
<b>UniProt ID:</b>	<a href="#">Q8N3J9</a>
<b>Cytogenetics:</b>	12q24.31
<b>Domains:</b>	zf-C2H2
<b>Gene Summary:</b>	May be involved in transcriptional regulation.[UniProtKB/Swiss-Prot Function]