

## Product datasheet for RG220830

### TCF20 (NM\_005650) Human Tagged ORF Clone

**Product data:**

|                           |   |
|---------------------------|---|
| Product Type:             | Expression Plasmids   |
| Product Name:             | TCF20 (NM_005650) Human Tagged ORF Clone                                    |
| Tag:                      | TurboGFP  |
| Symbol:                   | TCF20   |
| Synonyms:                 | AR1; DDVIBA; SPBP; TCF-20   |
| Mammalian Cell Selection: | Neomycin  |
| Vector:                   | pCMV6-AC-GFP (PS100010)   |
| E. coli Selection:        | Ampicillin (100 ug/mL)  |
| ORF Nucleotide Sequence:  | >RG220830 representing NM_005650<br>Red=Cloning site Blue=ORF Green=Tags(s) |

TTTTGTAATACGACTCACTATAGGGCGGCCGGAATTCGTCGACTGGATCCGGTACCGAGGAGATCTGCC  
GCC**CGATCGCC**

ATGCAGTCTTTCGGGAGCAAAGCAGTTACCACGGAAACCAGCAAAGCTACCCACAGGAGGTACACGGCT  
CATCCCGGCTAGAAGAGTTCAGCCCTCGTCAGGCCAGATGTTCCAGAATTTGGAGGTACAGGTGGCAG  
TAGTGGCAGCAGTGGCAGTGGCAGTGGTGGTGGACGACGAGGAGCAGCAGCTGCTGCGGCAGCGATGGCT  
AGCGAGACCTCTGGCCATCAAGTTACCAGGGTTTCAGGAAAGAGGCTGGAGATTTTACTACATGGCAG  
GCAACAAAGACCCCGTACTACAGGAACCCACAGCCTCCTCAGCGAAGGCCTTCTGGCCCTGTGCAGAG  
CTATGGACCCCCCAGGGGAGCAGCTTTGGCAATCAGTATGGGAGTGAGGGTTCATGTGGCCAGTTCAA  
GCACAGCACTCTGGCCTTGGCGGTGTGTACATTATCAGCAGGATTACTGTTGGCCTTTCTCTCCAGGGA  
GTGCTCAGTACCAACAGCAGGCTTCCAGCCAGCAGCAGCAGCAAGTCCAGCAGTTGAGACAACAGCT  
TTACCAGTCCCATCAGCCCTGCCACAGGCCACTGGCCAACCAGCATCCAGCTCATTCCCATTACAGCCA  
ATGCAGCGGCCCTCAACTCTGCCATCCTCTGCTGCTGGTTACCAGTTAAGAGTGGGTTCAGTTGGCCAAC  
ACTATCAGTCTTCTGCTTCTCTCCTCCTCCTCCTCCTCCTCCTCCCTCACCCAGCGTTTTAGCCAGTCTGG  
ACAGAGCTATGATGGCAGTTACAATGTGAATGCTGGATCTCAGTATGAAGGACACAATGTGGGTTCTAAT  
GCACAGGCTTATGGAACACAATCCAATTACAGCTATCAGCCTCAATCTATGAAGAATTTGAAACAGGCAA  
AGATTCCACAAGGACCCAAACAGGGGAGCAGCAGCAGCAACCGCAGCAACAACAACACCCTTCTCAGCA  
TGTGATGAGTACTACTAACGCTGCCACCAAGCTGCCCCCTGCAAAGCCAAGTGGGGCAGTACAACAGCCT  
GAGGTTCTGTGAGGTTCCCATGTCAGTTTCCACGAACTTACAGCCCATTCTTAAACCCTTCTCCAGCTG  
CCTCTGTGGTTCAGTCTCCAAGTGTAGTTCTACCCCATCTCCTCTCATGCAGACTGGGGAGAATCTCCA  
GTGTGGGCAAGGCAGTGTGCCTATGGGTCCAGAAACAGAATTTTACAGTTAATGCCTCAACTCAGTCCA  
ACCCCATCAATGATGCCAGTCTAATTCTCATGCTGCAGGCTCAAAGGGTTTGGACTAGAAGGGGTAC  
CAGAAAAGCGACTGACAGATCCTGGGTTGAGTAGTTGAGTGTCTGAGTACTCAAGTGCCCAATCTTCC  
TAACACTGTCCAGCAGCATGTTACTTTCTGATGCCCTGACTCCTCAGAAGAAGACCTCCAAGAGGCCCTCA



View online »

TCTTCCAAGAAAGCAGATAGCTGCACAAATTCTGAAGGCTCCTCACAACTGAAGAACAGCTGAAGTCCC  
CTATGGCAGAGTCATTAGATGGAGGCTGCCTCAGCAGTTCAGAGGATCAAGGCGAGAGAGTGCGGCAACT  
AAGTGGCCAGAGCACCAGCTCTGACACCACCTACAAGGGTGGAGCCTCTGAGAAAGCTGGCTCCTCACCG  
GCACAAGTGTCTAGAATGAACCCCCAGACTCAATGCTAGTCTGCCGAAGAGAAGAGGCCACCTCAC  
CAGGGCCTAAGGACATGCCATTGTATCCGACGGGAACCCAAAGGTTAATGAGAAGACTGTTGGGGTGAT  
TGCTCTCCCGGGAAGCCATGACAGGTGCGGTAGAAAAGCCTGGTGGACAAGATAAAGGCTCCCAAGAGGAT  
GATCCTGCAGCCACTCAAAGGCCACCTAGCAATGGTGGGCAAAAGGAAACCAGTGCATCACTTCCCC  
AGCCAGAGCCTCCAGGAGGAGGAGGCAAAAGGAAACAAGAATGGCGATAACAACCTCAACCATTAATGG  
AGAAGGAAATGGCCAGAGTGGCCACTCTGCAGCGGGCCCTGGTTTTACGAGCAGAAGTGCAGCTAGCAAA  
TCTCTGGAAGTCTGCGCTATAGTTACAAAAGATAGTTTCGGGTGACGCCGTGCCACGAAATGTCAGTGGCT  
TTCCTCAGTATCCTACAGGGCAAGAAAAGGAGATTTCACTGGCCATGGGGAACGAAAGGTTAGAAATGA  
AAAATTCCCAAGCCTCCTGCAGGAAGTGTTCAGGGTTACCACCACCACCTGACAGGAGATATTCTAGG  
AGTACTCAAGAGCATCAGGGGATGGCTGGTAGCCTAGAAGGAACCACAAGGCCAATGTCTTGGTTAGTC  
AAACCAATGAATTAGCTAGCAGGGGCTTCTGAACAAAAGCATTGGGTCTCTATTAGAAAATCCCCACTG  
GGCCCCCTGGGAAAGGAAATCAAGCAGCACAGCTCCTGAAATGAAACAGATCAATTTGACTGACTATCCA  
ATTCAGAAAGTTTGAATAGAGCCTCAGTATCAGCAGATGAGCCTGGGGGTTCCCTCTCTGAAAGAA  
GATCAGTGATCTGTGATTTTCTCCACTAAGACAGATTGTCAGGGACCCAGGGGCTCACTCACTGGGACA  
CATGAGTGCCGACACCAGAATTGGGAGGAATGACCGTCTCAATCCAACCTTAAGTCAGTCGGTCACTTCT  
CCTGGTGGTTGGTGTCCATGGAACCAAGCTGAAATCCCAGAGCGGGCAGATAAAGAGGAAAGACTTTG  
AACAGTCTAAATCTAAGCTAGTTTCAACAACAAGAAATCTGGAGACCACTGCCATCCTCTAGCATCAA  
GCATGAGTCTTACCGCGCAATGCCAGCCCTGGAGCAGCAACCCATGATTCCTTTCAGACTATGGCCCC  
CAAGACGACAGACCCACGCCAATGCGGCGGGTCCCTGGCAGAGTTGGTGGTGGGAGGGCAGGAGGGGTC  
GGTCCCCCTCAATATCATGACTTTGCAGAAAATGAAAATGTCTCCTGGGCGGAGCAGAGGCCACAGG  
GGGAGACCCTCATCACATGAATCCACACATGACCTTTTTAGAGAGGGCTAACCGGAGTTCTTACACACT  
CCCTTTTCTCCAACTCAGAAACCTGGCCTCTGCTTATCATGCAAACTCAGGGCTCATGCTTATGGGG  
ACCCTAACGCAGGTTTGAATTCTCAGCTGCATTATAAGAGACAGATGTACCAACAGCAACCAGAGGAGTA  
TAAAGACTGGAGCAGCGTTCTGCTCAGGGAGTAAATGCTGCAGCACAGCACAGGAGGAGGGGCCACGG  
AAGAGTCCAAGGCAGCAGCAGTTTCTTGACAGAGTACGGAGCCCTCTGAAAAATGACAAAGATGGTATGA  
TGTATGGCCACCAGTGGGGACTTACCATGACCCAGTCCCAGGAGGCTGGGCGCTGCCTAATGTCTAG  
TGATGGTCTGCCTAACAAGGGCATGGAATTAAGCATGGCTCCCAGAAGTTACAAGAATCCTGTTGGGAT  
CTTCTCGGCAAACTTCTCCAGCCAAAAGCAGCGTCTCCAGGAATGTCCAGTCAAAAAAGGTATGGGC  
CGCCCCATGAGACTGATGGACATGGACTAGCTGAGGCTACACAGTCACTCAAACTGGTAGTGTATGCT  
GAGACTTCCAGGCCAGGAGGATCATTCTTCTCAAACCCCTAATCATGAGGAGGCGTGTTCGTTCTTTT  
ATCTCTCCATTCCCAGTAAGAGACAGTACAAGATGTAAGAACAGTAGCACTGAAGATAAAGGTGCGC  
TCCTTCACTCATCAAAAGAAGGGCTGATAAAGCATTCAATTCCTATGCCATCTTTCTCACAGTCAGGA  
TATCAAGTCTATCCCTAAGAGAGATTCTCCAAGGACCTTCCAAGTCCAGATAGTAGAACTGCCCTGCT  
GTTACCCTCACAAGCCCTGCTAAGACAAAATACTGCCCCACGGAAAGGACGGGGATTGAAATGGAAG  
CTATAGTTCAGAAGATTACATCCCCAAATATTAGGAGGAGCGCATCTTCGAACAGTGGGAGGCTGGGG  
AGACACGGTTACGCTTGATGATATACTGTCTTTGAAGAGTGGTCTCCTGAAGGTGGAGTGTGCTGTT  
CAGGATGCTGACATAGAGAAGAGAAAAGGTGAGGTGGCTTCGGACCTAGTCAGTCCAGCAAAACCAGGAT  
TGCACGTAGAGAAACCTTCTCAAGGTCTTCAAGAGTGGCGTGGCAGCGTGGATGACAAAGTGAAGAC  
AGAGACACATGCAGAAACAGTACTGCCGAAAGGAAACCCCTGGTGCCATGACATCCACAACCTCACAG  
AAGCCTGGTAGTAACCAAGGGAGACCAGATGGTTCCTGGGTGGAACAGCACCTTAAATCTTTCCAGACT  
CAAAGAATGTACCTCCAGTGGGCATATTGGCCCTGAGGCAAACCCCAAGGCTGAAGAGAAGGAGAACGA  
TACAGTGACGATTTACCGAAGCAAGAGGGTTCCCTCAAAGGGATATTTCCATCAGGAAAGAAGAAG  
GGGAGACCCATTGGTAGTGAATAAGCAAAAGAAACAGCAGCAGCCACCGCCTCCACCCCTCAGCCCC  
CACAGATACCAGAAGTCTGCAGATGGAGAGCCAAAGCCAAAAAACAGAGGCAAGGAGGGAGAGAAG  
GAAGCCTGGGGCCAGCCGAGGAAGCGAAAACCAACAAGCAGTTCCCATTTGTGGAACCCCAAGAACCT  
GAGATCAAATAAAATATGCCACCCAGCCACTGGATAAAACTGATGCCAAGAACAAGTCTTTTTACCCCT  
ACATCCATGTAGTAAATAAGTGTGAACCTGGAGCCGTTTGTACAATCATCAATGCTGAGGAAGAAGAACA  
GACCAAAATTAGTGGGGCAGGAAGGGTTCAGAGGTCAGTACCCCTCCACCTAGCAGCACTGAAAGCAAG  
GCGCTCCCGGCTCGTCTTTATGCTGCAGGGACCTGTTGTGACAGAGTCTTCGGTTATGGGGCACCTGG

TTTGCTGTCTGTGTGGCAAGTGGGCCAGTTACCGGAACATGGGTGACCTCTTTGGACCTTTTTATCCCCA  
 AGATTATGCAGCCACTCTCCGAAGAATCCACCTCCTAAGAGGGCCACAGAAATGCAGAGCAAAGTTAAG  
 GTACGGCACAAAAAGTGCTTCTAATGGCTCCAAGACGGACTGAGGAGGAGGAAGAGCAGCAGCAGCAGC  
 AGAAGGAGCAGAGAAGCCTGGCCGCACACCCAGGTTTAAAGCGGCCACCCTCGGAAGACTGTGGTGG  
 AGGCCCTCGTCCCTGTCCAGGGGGCTCCCTTGTAAAAAGCAGCCACTGAGGGCAGCAGTGAAGAACT  
 GTTTTGGACTCGAAGCCCTCCGTGCCACCACCTCAGAAGGTGCCCTGAGCTGGAGTTACAATCCCTG  
 AACTACCTTTGACAGCAATGAATTTTGGTCCATGAGGGTTGTATTCTCTGGCCAATGGAATCTACCT  
 GGTGTGGCAGGCTCTATGGCCTGCAGGAAGCGCTGGAATAGCCAGAGAGATGAAATGTTCCCACTGC  
 CAGGAGGCAGGCCACCTTGGGCTGCTACAACAAGGCTGCTCCTCCGATACCATACCCGTGTGCCA  
 TTGATGCAGATTGTTGCTACATGAGGAGAACTTCTCGGTGAGGTGCCCTAAGCACAAGCCTCCCCTTC  
 GTGCCCTCCCCCTTGCAGAACAGACCGCAAAGGAGCAGCTCAGCACAGAGCAGTCGGAGCGGGG

ACGCGTACGCGGCCGCTCGAG – GFP Tag – GTTTAA

**Protein Sequence:**

>RG220830 representing NM\_005650  
 Red=Cloning site Green=Tags(s)

MQSFREQSSYHGNQSYQPQEVHGSRL EEFSPRQAQMFQNFGGTGGSSGSSGSGSGGRRGAAAAAAMA  
 SETSGHQYQGFKEAGDFYYMAGNKDPVTTGTPQPPQRRPSGPVQSYGPPQSSFGNQYSGEHSVQGFQ  
 AQHSLGGVSHYQQDYTPGPFSPGSAQYQQQASSQQQQVQLRQQLYQSHQPLPQATGQPASSSSHLQP  
 MQRPSTLPSAAGYQLRVGQFGQHYQSSASSSSSSSFPSPQRFSQSGQSYDGSYNNVAGSQYEGHNVGSN  
 AQAYGTQSNYSYQPQSMKNFEQAKIPQGTQQGQQQQPQQQHPQSQHVMTNAATKLPQSQVQGNQNP  
 EVPVRSMPQFHQNFSPISNPSPAASVVQSPSCSSTPSPLMQTGENLQCGQGSVPMGSRNRIQLMPQLSP  
 TPSMMPSPNSHAAGFKGFGLEGVPEKRLTDPGLSSLSTQVANLPNTVQHMLLSDALTPQKTKSRPS  
 SSKKADSTNSEGSSQPEEQKSPMAESLDGGCSSSESDQGERVRQLSGQSTSSDTTYKGGASEKAGSSP  
 AQGAQNEPRLNASPAAREEATSPGAKDMPLSSDGNPKVNEKTVGVIVSREAMTGRVEKPGGQDKGSQED  
 DPAATQRPPSNGGAKETSHASLPQPEPPGGGSKGNKNGDNNSNHGEGNGQSGHSAAGPGFTSRTEPSK  
 SPGSLRYSYKDSFGSAVPRNVSGFPQYPTGQEKDFTGHGERKGRNEKFPSSLQEVLQGYHHHPDRRYSR  
 STQEHQMGAGSLEGTTRPNVLVSQTNELASRGLLNKISIGSLEENPHWGPWERKSSSTAPEMKQINLTDYP  
 IPRKFEIEPQSSAHEPGGSLSERRSVICDISPLRQIVRDPGAHSLGHMSADTRIGRNDRLNPTLSQSVIL  
 PGGLVSMETKLSQSGQIKEEDFEQSKSQASFNNKSGDHCHPPSIKHESYRGNASPGAATHDSLSDYGP  
 QDSRPTPMRRVPRVGGREGMRGRSPSYHDFAEKLMSPGRSRGPGGDPHMMNPHMTFSERANRSSLHT  
 PFSNSETLASAYHANTRAHAYGDPNAGLNSQLHYKRQMYQQQPEEYKDWSSGSAQGVIAAAQHRQEGPR  
 KSPRQQQLDRVRSPLKNDKDGMMYGPVGTYHDPQAQEAQRCLMSSDGLPNKGMELKHGSQKLQESCDW  
 LSRQTPAKSSGPPGMSSQKRYGPPHETDGHGLAEATQSSKPGSVMLRPLGQEDHSSQNPLIMRRRVRSF  
 ISPIPSKRQSQDVKNSTEDKGRLLHSSKEGADKAFNSYAHLSHSQDIKSIKPRDSSKDLPSPDSRNCPA  
 VTLTSPAKTKILPPRKGRGLKLEAIVQKITSPNIRRSASSNSAEAGGDTVTLDDILSLKSGPPEGGSVAV  
 QDADIEKRKGEVASDLVSPANQELHVEKPLPRSSEEWGSDDKVKTETHAETVAGKEPPGAMTSTTSQ  
 KPGSNQGRPDGSLGGTAPLIFPDSKNVPPVGILAPEANPKAEKENDTVTISPKQEGFPKGYFSPGKKK  
 GRPIGSVKNKQKQPPPPPPQPIPEGSADGEPKPKKQRRRERRKPGAQPRKRKTKQAVPIVEPQEP  
 EIKLKYATQPLDKTDAKNKSFYPIYHVVNKCELGAVCTIINAEEEEQTKLVRGRKQQRSLTPPPSSTESK  
 ALPASSFMLQGPVVTESSVMGHLVCCLCGKWAYSYRNMGDLFGPFYPQDYAATLPKNPPPKRATQMKSVK  
 VRHKASNSGSKTDEEEEEQQQQKEQRSLAAHPRFKRRHRSEDCGGGPRSLSRGLPCKKAAATEGSSEKT  
 VLDSKPSVPTTSEGGPELELQIPELPLDSNEFWHEGCILWANGIYLVCGRLYGLQEALEIAREMKCSHC  
 QEAGATLGCYNKGCSEFRYHYPCAIDADCLLHEENF SVRCPKHKPPLPCPLPPLQNKAKGSLSTEQSERG

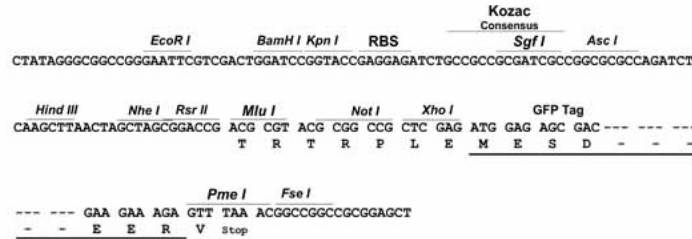
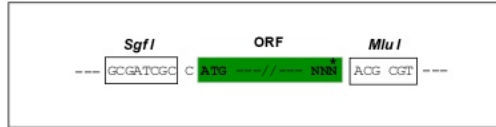
TRTRPLE – GFP Tag – V

**Restriction Sites:**

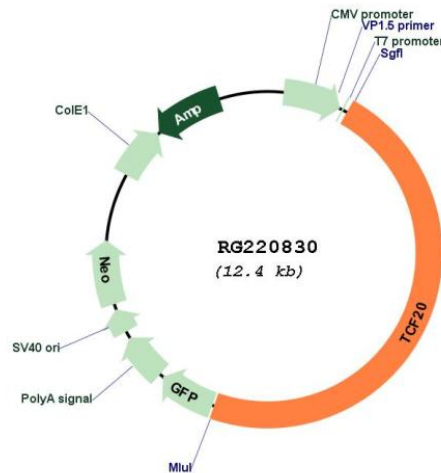
Sgfl-MluI

Cloning Scheme:

Cloning sites used for ORF Shutting:



Plasmid Map:



ACCN:

NM\_005650

ORF Size:

5880 bp

OTI Disclaimer:

The molecular sequence of this clone aligns with the gene accession number as a point of reference only. However, individual transcript sequences of the same gene can differ through naturally occurring variations (e.g. polymorphisms), each with its own valid existence. This clone is substantially in agreement with the reference, but a complete review of all prevailing variants is recommended prior to use. [More info](#)

|                               |   |
|-------------------------------|---|
| <b>OTI Annotation:</b>        | This clone was engineered to express the complete ORF with an expression tag. Expression varies depending on the nature of the gene.  |
| <b>Components:</b>            | The ORF clone is ion-exchange column purified and shipped in a 2D barcoded Matrix tube containing 10ug of transfection-ready, dried plasmid DNA (reconstitute with 100 ul of water).  |
| <b>Reconstitution Method:</b> | <ol style="list-style-type: none"><li>1. Centrifuge at 5,000xg for 5min.</li><li>2. Carefully open the tube and add 100ul of sterile water to dissolve the DNA.</li><li>3. Close the tube and incubate for 10 minutes at room temperature.</li><li>4. Briefly vortex the tube and then do a quick spin (less than 5000xg) to concentrate the liquid at the bottom.</li><li>5. Store the suspended plasmid at -20°C. The DNA is stable for at least one year from date of shipping when stored at -20°C.</li></ol> |
| <b>RefSeq:</b>                | <a href="#">NM_005650.4</a>   |
| <b>RefSeq Size:</b>           | 7407 bp   |
| <b>RefSeq ORF:</b>            | 5883 bp   |
| <b>Locus ID:</b>              | 6942  |
| <b>UniProt ID:</b>            | <a href="#">Q9UGU0</a>  |
| <b>Cytogenetics:</b>          | 22q13.3   |
| <b>Protein Families:</b>      | Druggable Genome, Transcription Factors   |
| <b>Gene Summary:</b>          | This gene encodes a transcription factor that recognizes the platelet-derived growth factor-responsive element in the matrix metalloproteinase 3 promoter. The encoded protein is thought to be a transcriptional coactivator, enhancing the activity of transcription factors such as JUN and SP1. Mutations in this gene are associated with autism spectrum disorders. Alternative splicing results in multiple transcript variants. [provided by RefSeq, Sep 2015]  |