

## Product datasheet for **RG220817**

### **TAGAP (NM\_054114) Human Tagged ORF Clone**

#### **Product data:**

Product Type:	Expression Plasmids
Product Name:	TAGAP (NM_054114) Human Tagged ORF Clone
Tag:	TurboGFP
Symbol:	TAGAP
Synonyms:	ARHGAP47; FKSG15; IDDM21; TAGAP1
Mammalian Cell Selection:	Neomycin
Vector:	pCMV6-AC-GFP (PS100010)
E. coli Selection:	Ampicillin (100 ug/mL)



[View online »](#)

**ORF Nucleotide Sequence:**

>RG220817 representing NM\_054114  
 Red=Cloning site Blue=ORF Green=Tags(s)

TTTTGTAATACGACTCACTATAGGGCGGCCGGGAATTCGTCGACTGGATCCGGTACCGAGGAGATCTGCC  
 GCC**CGGATCGCC**

ATGAAGCTGAGAAGCAGCCACAATGCTTCAAAAACACTAAACGCCAATAATATGGAGACACTAATCGAAT  
 GTCAATCAGAGGGTGATATCAAGGAACATCCCCTGTTGGCATCATGTGAGAGTGAAGACAGTATTTGCCA  
 GCTCATTGAAGTTAAGAAGAGAAAAGAGTGTCTGCTGGCCCTTTCTCATGAGAAGGCTCTCCCCTGCA  
 TCAGATTTTTCTGGGGCTTTGGAGACAGACTTGAAAGCATCGCTATTTGATCAGCCCTTGTCAATTATCT  
 GCGGTGACAGTGACACACTCCCCAGACCCATCCAGGACATTCTCACTATTCTATGCCTTAAAGGCCCTTC  
 AACGGAAGGGATATTGAGGAGCAGCCAACGAGAAAGCCGTAAGGAGCTGAAGGAGGAGCTCAACTCT  
 GGGGATGCGGTGGATCTGGAGAGGCTCCCCGTGCACCTCCTCGCTGTGGTCTTTAAGGACTTCTCAGAA  
 GTATCCCCGGAAGCTACTTTCAAGCGACCTCTTTGAGGAGTGGATGGGTCTCTGGAGATGCAGGACGA  
 GGAGGACAGAATCGAGGCCCTGAAACAGTTGCAGATAAGCTCCCCGGCCCAACCTCCTGCTACTCAAG  
 CACTTGGTCTATGTGCTGCACCTCATCAGCAAGAACTCTGAGGTGAACAGGATGGACTCCAGCAATCTGG  
 CCATCTGCATTGGACCCAACATGCTCACCTGGAGAATGACCAGAGCCTGTCAATTTGAAGCCCAGAAGGA  
 CCTGAACAACAAGGTGAAGACACTGGTGGAAATTCCTATTGATAACTGCTTTGAAATATTTGGGGAGAAC  
 ATTCCAGTGCAATCCAGTATCACTTCTGATGACTCCCTGGAGCAGACTGACAGTTCAGATGTGTCGACCC  
 TGCAGAATGACTCAGCCTACGACAGCAACGACCCTGATGTGGAATCCAACAGCAGCAGTGGCATCAGCTC  
 TCCCAGCAGGCAGCCCCAGGTGCCATGGCCACAGCTGCTGGCTTGGATAGCGCGGGCCACAGGATGCC  
 CGAGAGGTGAGCCAGAGCCATTGTGAGCACCTGGCCAGGCTGAAAAGCTCCCTCGCACAGCCCAGATA  
 GGAGATACTCAGAGCCCAGCATGCCATCCTCCCAGGAGTGCCTCGAGAGCCGGGTGACAAACCAACACT  
 AACAAAGAGTGAAGGGGACTTCCCCGTGCCCGGGTAGGCTCTCGTTTGAAAAGTGAGGAGGCTGAAGAC  
 CCATTTCCAGAGGAGGTCTTCCCTGCAGTGCAAGGCAAAACCAAGAGGCCGGTGGACCTGAAGATCAAGA  
 ACTTGGCCCCGGGTTTCGGTGTCTCCCGGGGCACTGGTTCTCAAAGCCTTCTCCAGCAGCTCGCTGGACGC  
 GTCCTCTGACAGCTCGCCCGTGGCTTCTCCTTCCAGTCCCAAAAGAAATTTCTTCCAGCAGACATCAGTCT  
 TTCACCACAAAGACAGAGAAAGGCAAGCCAGCCGAGAAATTAAGGCACTCCATGTCTTTACCTTTG  
 CCCCTCACAAAAAGTGTGACCAAAAACCTCAGCGGGGCTCTGGGAAATCGCAAGACTTTACCAGGGA  
 CCACGTCCCGAGGGGTGTCAGAAAGGAAAGCCAGCTTCCCGCCGAATCGTGCAGGAAAAATGGGTGTGAA  
 ACCCACAAACAAACAGCCCGGGCTTCTGCTGAGACCCACGCCCTCTCGGTGGATGATGTGTTCCAGG  
 GAGCTGACTGGGAGAGGCTGGAAGCCACCCTTATGAAGAGGCCATGCAGGGCCCGGTAGCCAGACT  
 AGTGGCCTCCGAGAGCCAGACCGTGGGGAGCATGACGGTGGGGAGCATGAGGGCGAGGATGCTGGAGGCG  
 CACTGCCTCCTACCCCTCTTCCACCTGCTCACCACGTAGAGGACTCAAGACACAGGGGCAGAAAGAGC  
 CACTCCCTGGCCACGGACTCTCTCCCCTGCCTGAGCGATGGAAACAGAGCAGAACTGTCCATGCTTCTGG  
 GGACTCTCTGGGGCAGTGTCTGGCCCAGGGAGACCTGAGCTCCTCCCGCTGAGGACCGTCTCCGAGTCC  
 GTGCAGAGGAATAAGCGGGACTGTCTCGTGCGACGATGTAGCCAGCCGGTCTTTGAGGCTGACCAATTCC  
 AATATGCCAAAGAATCGTATATT

AG**CGGACCG**ACGCGTACGCGGCCGCTCGAG - GFP Tag - GTTTAA

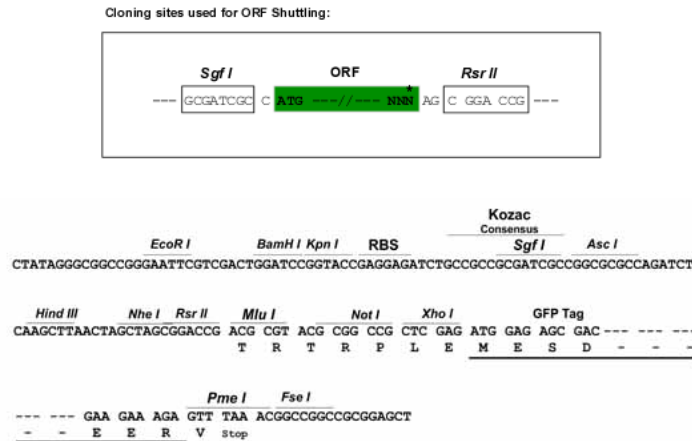
**Protein Sequence:** >RG220817 representing NM\_054114  
 Red=Cloning site Green=Tags(s)

MKLRSSHNASKTLNANNMETLIECQSEGDIKEHPLLASCESEDSICQLIEVKRKKVLSWPFLMRRLSPA  
 SDFSGALETDLKASLFDQPLSIIICGSDTLPRPIQDILTILCLKGPSTEGIFRRAANEKARKELKEELNS  
 GDAVDLERLPVHLLAVVFKDFLRSIPRKLSSDLFEEMGALEMQDEEDRIEALKQVADKLPRLNLLLLK  
 HLVYVHLHLSKNSEVNRMDSSNLAICIGPNMLTLENDQSLSFEAQKDLNKNVKTLEFLIDNCFEIFGEN  
 IPVHSSITSDSLEHTDSSDVSTLQNDAYSNDPDVENSSSGISSPSRQPQVPMATAAGLDSAGPQDA  
 REVSPPEIVSTVARLKSSLAQPDRRYSEPSMPSSQECLESRVTNQTLETKSEGDFVPRVGSRLSEEAED  
 PFPEEVFPAVQGKTRPVDLKIKNLAPGSVLPRALVLFKAFSSSSLDASDSSPVASPPSKRNFVSRHQ  
 FTTKTEKGKPSREIKKHSMSFTFAPHKKVLTKNLSAGSGKSQDFTRDHVPRGVRKESQLAGRIVQENGCE  
 THNQTAGFCLRPHALSVDDVFQADWERPGSPPSYEEAMQGPVARLVAESQTVGSMTVGSRMARMLEA  
 HCLLPPLPAHHVEDSRHRGSKEPLPGHLSPLPERWKQSRTVHASGDSLGHVSGPGRPELLPLRTVSES  
 VQRNKRDCLVRRCSQPVFADQFYAKESYI

SGPTRRRLE - GFP Tag - V

**Restriction Sites:** SgfI-RsrII

**Cloning Scheme:**



**ACCN:** NM\_054114

**ORF Size:** 2193 bp

**OTI Disclaimer:** The molecular sequence of this clone aligns with the gene accession number as a point of reference only. However, individual transcript sequences of the same gene can differ through naturally occurring variations (e.g. polymorphisms), each with its own valid existence. This clone is substantially in agreement with the reference, but a complete review of all prevailing variants is recommended prior to use. [More info](#)

**OTI Annotation:** This clone was engineered to express the complete ORF with an expression tag. Expression varies depending on the nature of the gene.

**Components:** The ORF clone is ion-exchange column purified and shipped in a 2D barcoded Matrix tube containing 10ug of transfection-ready, dried plasmid DNA (reconstitute with 100 ul of water).

**Reconstitution Method:**

1. Centrifuge at 5,000xg for 5min.
2. Carefully open the tube and add 100ul of sterile water to dissolve the DNA.
3. Close the tube and incubate for 10 minutes at room temperature.
4. Briefly vortex the tube and then do a quick spin (less than 5000xg) to concentrate the liquid at the bottom.
5. Store the suspended plasmid at -20°C. The DNA is stable for at least one year from date of shipping when stored at -20°C.

**RefSeq:** [NM\\_054114.3](#), [NP\\_473455.2](#)

**RefSeq Size:** 3363 bp

**RefSeq ORF:** 2196 bp

**Locus ID:** 117289

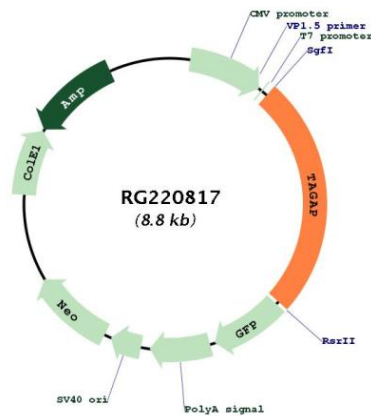
**UniProt ID:** [Q8N103](#)

**Cytogenetics:** 6q25.3

**Domains:** RhoGAP

**Gene Summary:** This gene encodes a member of the Rho GTPase-activator protein superfamily. The encoded protein may function as a Rho GTPase-activating protein. Alterations in this gene may be associated with several diseases, including rheumatoid arthritis, celiac disease, and multiple sclerosis. Alternate splicing results in multiple transcript variants encoding distinct isoforms. [provided by RefSeq, Jul 2013]

### Product images:



Circular map for RG220817