

Product datasheet for **RG220803**

ADAMTS6 (NM_197941) Human Tagged ORF Clone

Product data:

Product Type:	Expression Plasmids
Product Name:	ADAMTS6 (NM_197941) Human Tagged ORF Clone
Tag:	TurboGFP
Symbol:	ADAMTS6
Synonyms:	ADAM-TS 6; ADAM-TS6; ADAMTS-6
Mammalian Cell Selection:	Neomycin
Vector:	pCMV6-AC-GFP (PS100010)
E. coli Selection:	Ampicillin (100 ug/mL)
ORF Nucleotide Sequence:	>RG220803 representing NM_197941 Red=Cloning site Blue=ORF Green=Tags(s)

TTTTGTAATACGACTCACTATAGGGCGGCCGGAATTCGTCGACTGGATCCGGTACCGAGGAGATCTGCC
GCC**CGATCGCC**

ATGGAATTTTGTGGAAGACGTTGACCTGGATTTGAGCCTCATCATGGCTTCATCGGAATTTTCATAGTG
ACCACAGGCTTTCATACAGTTCTCAAGAGGAATTCCTGACTTATCTTGAACACTACCAGCTAACTATTCC
AATAAGGGTTGATCAAAATGGAGCATTTCTCAGCTTTACTGTGAAAAATGATAAACACTCAAGGAGAAGA
CGGAGTATGGACCCTATTGATCCACAGCAGGCAGTATCTAAGTTATTTTTAAACTTTCAGCCTATGGCA
AGCACTTTCATCTAACTTGACTCTCAACACAGATTTTGTGTCCAAACATTTTACAGTAGAATATTGGGG
GAAAGATGGACCCAGTGGAAACATGATTTTTAGACAACACTGTCATTACACAGGATATTTGCAAGATCAA
CGTAGTACAACCTAAAGTGGCTTTAAGCAACTGTGTTGGGTTGCATGGTGTATTGCTACAGAAGATGAAG
AGTATTTTATCGAACCTTTAAAGAATACCACAGAGGATCCAAGCATTTTAGTTATGAAAATGGCCACCC
TCATGTTATTTACAAAAAGTCTGCCCTTCAACAACGACATCTGTATGATCACTCTCATTGTGGGGTTTCG
GATTTCAAGAAGTGGCAAACCTTGGTGGCTGAATGACACATCCACTGTTTCTTATTCACTACCAATTA
ACAACACACATATCCACCACAGACAGAAGAGATCAGTGAGCATTGAACGGTTTGTGGAGACATTGGTAGT
GGCAGACAAAAATGATGGTGGGCTACCATGGCCGCAAAGACATTGAACATTACATTTGAGTGTGATGAAT
ATTGTTGCCAACTTTACCGTGATTTCCAGCCTAGGAAACGTTGTGAATATTATAGTGGCCGCTTAATTG
TTCTCACAGAAGATCAGCCAAACTTGGAGATAAACCCACATGCAGACAAGTCCCTCGATAGCTTCTGTAA
ATGGCAGAAATCCATTCTCTCCACCAAAGTGATGGAACACCATTCCAGAAAATGGGATTGCCACCAC
GATAATGCAGTCTTATTACTAGATATGATATCTGCCTTATAAAAAAAGCCCTGTGGAACACTGGGCT
TGGCCTCTGTGGCTGGAATGTGTGAGCCTGAAAGGAGCTGCAGCATTAAATGAAGACATTGGCCTGGGTTT
AGCTTTTACCATTGCACATGAGATTGGTACAATTTTGGTATGAACCATGATGGAATTGGAATTTCTTGT
GGGACGAAAGGTCATGAAGCAGCAAACTTATGGCAGCTCACATTACTGCGAATACCAATCTTTTTCT
GGTCTGCTTGAGTGCAGACTACATCACCAGCTTCTAGATTGAGCCGTTGACTTGCCTTGATAATGA
GCCTCCAAGCGTGACTTCTTTATCCAGCTGTGGCCCAAGTCAAGTGTATGATGCTGATGAGCAATGT



[View online >](#)

```

CGTTTCCAGTATGGAGCAACCTCCCGCCAATGTAATATGGGGAAGTGTGTAGAGAGCTCTGGTGTCTCA
GCAAAAGCAACCCTGTGTACCAACAGTATTCCAGCAGCTGAGGGGACACTGTGTCAAAGTGGGAATAT
TGAAAAAGGGTGGTGTATCAGGGAGATTGTGTTCTTTTGGCACTTGGCCCCAGAGCATAGATGGGGGC
TGGGGTCCCTGGTCACTATGGGGAGAGTGCAGCAGGACCTGCGGGGGAGGCGTCTCTCATCCCTAAGAC
ACTGTGACAGTCCAGCACCTTCAGGAGGTGAAAAATTTGCCCTGGGAAAGGAAACCGTATCGCTCCTG
TAACACAGATCCATGCCCTTTGGGTTCCGAGATTTTCGAGAGAAACAGTGTGCAGACTTTGACAATATG
CCTTCCGAGGAAAGTATTATAACTGAAACCCATACTGGAGGTGGGGTAAAACCTTGTGCATTAAACT
GCTTGGCTGAAGTTATAATTTCTACACTGAACGTGCTCCTGCGGTGATCGATGGGACCCAGTGCATGC
GGATTCAGTGGATATCTGCATCAATGGAGAATGCAAGCACGTAGGCTGTGATAATATTTTGGGATCTGAT
GCTAGGGAAGATAGATGTCGAGTCTGTGGAGGGGACGGAAGCACATGTGATGCCATTGAAGGGTTCTTCA
ATGATTCAGTCCCGAGGGGAGGCTACATGGAAGTGGTGCAGATACCAAGAGGCTCTGTTCACATTGAAGT
TAGAGAAGTTGCCATGTCAAAGAACTATATTGCTTTAAAATCTGAAGGAGATGATTACTATATTAATGGT
GCCTGGACTATTGACTGGCCTAGGAAATTTGATGTTGCTGGGACAGCTTTTCATTACAAGAGACCAACTG
ATGAACCAAGATCCTTGAAGCTCTAGGCTCTACCTCAGAAAATCTCATCGTCATGGTTCTGCTTCAAGA
ACAGAATTTGGGAATTAGGTATAAGTTCATGTTCCCATCACTCGAACTGGCAGTGGAGATAATGAAGTT
GGCTTTACATGGAATCATCAGCCTTGGTCAGAATGCTCAGCTACTTGTGCTGGAGGTGTCCAAGACAGG
AGGTGGTCTGTAAAAGGTTGGATGACAACCTCCATTGTCCAGAACAATTACTGTGATCCTGACAGTAAACC
ACCTGAAAATCAAAGAGCCTGCAACACTGAGCCCTGCCACCTGAGTGGTTCATTGGGGATTGGTTGGAA
TGCAGCAAGACTTGTGATGGTGGGATGCGCACAAGGGCAGTGTCTGCATCAGGAAGATCGGACCTTCTG
AGGAGGAGACGCTGGACTACAGTGGTGTGTTAACACACCCGGCCTGCGAAAAAGAGCCCTGCAACAACCA
GTCATGTCCACCACAGTGGTGGCTTTGGACTGGTCTGAGTGTACTCCAAAATGTGGTCCAGGATTCAAG
CATCGGATTGTTCTGTGCAAGAGCAGTGACCTTTCTAAGACATCCCAGCTGCACAATGTCCAGAGAGAA
GCAAACTCCTGTCCGCATCCGCTGCAGTTTGGGCCGCTGCCCTCCTCCTCGTGGTCCAGGAGACTG
GGCCAGTGTCTGCTCAGTGTGCCTTGACAGCAGATGAGAAGTGTGCAAGTGTCTCTCACAGCCGGA
CAGGCATCTAGTACTGTCTAGAACTGTTGCGCCTCCATCAATGCAGCAGTGTGAAAGCAAATGTGACA
GTACCCCATTTCTAATACTGAAGAGTGCAAAGATGTGAATAAAGTGGCTATTGCCCACTGGTGTGAA
GTTCAAGTTCTGCAGTCGAGCATACTTCAGACAGATGTGTTGTAAGACCTGCCAAGGACAC
    
```

ACGCGTACGCGGCCGCTCGAG – GFP Tag – GTTTAA

Protein Sequence:

>RG220803 representing NM_197941
 Red=Cloning site Green=Tags(s)

```

MEILWKTLTWILSLIMASSEFHSDHRLSYSSQEEFLTYLEHYQLTIPIRVDQNGAFLSFTVKNDKHSRRR
RSMDDPIDPQAVSKLFFKL SAYGKHFLNLTNTDFVSKHFTVEYWGKDGPKWKHDFLDNCHYTGYLQDQ
RSTTKVALSNCVGLHGVIATEDEEYFIEPLKNTTEDSKHFSYENGHPHVIYKKSALQQRHL YDHS HCGVS
DFTRSGKPWWLNDTSTVSYSLPINNTHIHRQKRSVSIERFVETLVVADKMMVGYHGRKDIEHYIL SVMN
IVAKLYRDSSLGNVVNIIVARLIVLTEDQPNLEINHHADKSLDSFCKWQK S ILSHQSDGNTIPENGAHH
DNAVLITRYDICTYKNKPCGTLGLASVAGMCEPERSCSINEDI GLGSAFTIAHEIGHNFGMNHGDI GNSC
GTKGHEAAKLMAAHITANTNPF SWSACSRDYITSFLDSGRGTCLDNEPPKRDFLYP AVAPGQVYDADEQC
RFQYGATSRQCKYGEVCRELWCLSKSNRVCVNSIPAAEGTLCQTGNIEKWGYQGDVFPFGTWPQSIDGG
WGPWSLWGECSRTC GGGVSSLRHCDSPAPSGGKYCLGERKRYRSCNTDPCPLGSRDFREKQCADFDM
PFRGKYNNWKPYTGGGVKPCALNCLAEGYNFYTERAPAVIDGTQCNADSLD ICINGECKHVGCN ILGSD
AREDRCRVCGGDSTCD AIEGFNDSLPRGGYMEVVQIPRGSVHIEVREVAMSKNYIALKSEGDDYYING
AWTIDWPRKFDVAGTAFHYKRPTDEPE SLEALGPTSENLIVMVL LQEQLGIRYKFNVPITRTGSGDNEV
GFTWNHQPWSECSATCAGGVQRQEVVCKRLDDNSIVQNNYCDPDSKPPENQRACNTEPCPPEWF IGDWLE
CSKTCDCGMRTRAVL CIRKIGPSEETLDYSGCLTHRPVEKEPCNNQSCPQWVALDWSECTPKCGPGFK
HRIVLCKSSDL SKTFPAAQCPEESKPPVIRCSLGRCP PPRWVTGDWQCSAQCGL GQQMRTVQCLSYTG
QASSDCLETVRPPSMQQCESKCDSTPISNTEECKDVNKVAYCPLVLKFKFCSRAYFRQMCKCTCQGH
    
```

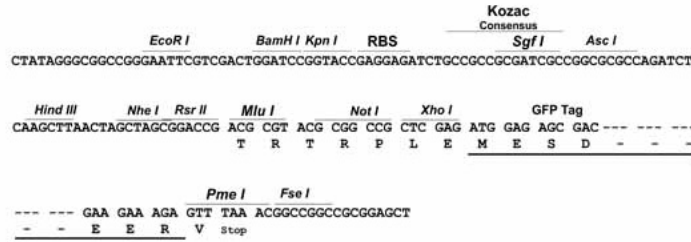
TRTRPLE – GFP Tag – V

Restriction Sites:

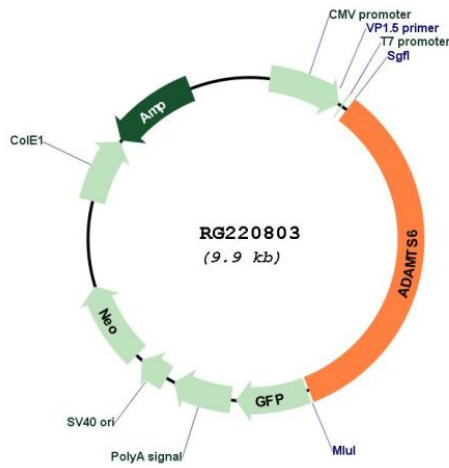
Sgfl-MluI

Cloning Scheme:

Cloning sites used for ORF Shutting:



Plasmid Map:



ACCN: NM_197941
 ORF Size: 3351 bp

OTI Disclaimer: Due to the inherent nature of this plasmid, standard methods to replicate additional amounts of DNA in E. coli are highly likely to result in mutations and/or rearrangements. Therefore, OriGene does not guarantee the capability to replicate this plasmid DNA. Additional amounts of DNA can be purchased from OriGene with batch-specific, full-sequence verification at a reduced cost. Please contact our customer care team at custsupport@origene.com or by calling 301.340.3188 option 3 for pricing and delivery.

The molecular sequence of this clone aligns with the gene accession number as a point of reference only. However, individual transcript sequences of the same gene can differ through naturally occurring variations (e.g. polymorphisms), each with its own valid existence. This clone is substantially in agreement with the reference, but a complete review of all prevailing variants is recommended prior to use. [More info](#)

OTI Annotation: This clone was engineered to express the complete ORF with an expression tag. Expression varies depending on the nature of the gene.

Components: The ORF clone is ion-exchange column purified and shipped in a 2D barcoded Matrix tube containing 10ug of transfection-ready, dried plasmid DNA (reconstitute with 100 ul of water).

Reconstitution Method:

1. Centrifuge at 5,000xg for 5min.
2. Carefully open the tube and add 100ul of sterile water to dissolve the DNA.
3. Close the tube and incubate for 10 minutes at room temperature.
4. Briefly vortex the tube and then do a quick spin (less than 5000xg) to concentrate the liquid at the bottom.
5. Store the suspended plasmid at -20°C. The DNA is stable for at least one year from date of shipping when stored at -20°C.

RefSeq: [NM_197941.4](#)

RefSeq Size: 7289 bp

RefSeq ORF: 3354 bp

Locus ID: 11174

UniProt ID: [Q9UKP5](#)

Cytogenetics: 5q12.3

Protein Families: Protease

Gene Summary: This gene encodes a member of the ADAMTS (a disintegrin and metalloproteinase with thrombospondin motifs) protein family. Members of the family share several distinct protein modules, including a propeptide region, a metalloproteinase domain, a disintegrin-like domain, and a thrombospondin type 1 (TS) motif. Individual members of this family differ in the number of C-terminal TS motifs, and some have unique C-terminal domains. The encoded preproprotein is proteolytically processed to generate the mature enzyme. Expression of this gene may be regulated by the cytokine TNF-alpha. [provided by RefSeq, Mar 2016]