

Product datasheet for **RG220791**

Myeloid zinc finger 1 (MZF1) (NM_003422) Human Tagged ORF Clone

Product data:

Product Type:	Expression Plasmids
Product Name:	Myeloid zinc finger 1 (MZF1) (NM_003422) Human Tagged ORF Clone
Tag:	TurboGFP
Symbol:	Myeloid zinc finger 1
Synonyms:	MZF-1; MZF1B; ZFP98; ZNF42; ZSCAN6
Mammalian Cell Selection:	Neomycin
Vector:	pCMV6-AC-GFP (PS100010)
E. coli Selection:	Ampicillin (100 ug/mL)



[View online »](#)

ORF Nucleotide Sequence:

>RG220791 representing NM_003422
 Red=Cloning site Blue=ORF Green=Tags(s)

TTTTGTAATACGACTCACTATAGGGCGGCCGGAATTCGTCGACTGGATCCGGTACCGAGGAGATCTGCC
 GCC**CGATCGCC**

ATGAGGCCTCGGTGCTGGGCTCCCCAGACCGAGCACCCCAAGAAGATGAGGGCCCTGTTCATGGTGAAGC
 TAGAGGACTCTGAGGAGGAGGGTGAGGCTGCCTTATGGGACCCAGGCCCTGAAGCTGCACGCCTGCGTTT
 CCGGTGCTTCCGCTATGAGGAGGCCACAGGGCCCCAAGAGGCCCTGGCCAGCTCCGAGAGCTGTGTGCG
 CAGTGGCTGCGTCCAGAGGTACGCTCCAAGGAGCAGATGCTGGAGCTGTTGGTGTGGAGCAGTTCTGG
 GCGCACTGCCCCCTGAGATCCAGGCCGTGTGCAGGGCAGCGCCAGGCAGCCCCGAGGAGGCTGTGC
 CCTAGTAGATGGGCTGCGCCGGGAGCCGGGCGACCCCGAGATGGGTACAGTCCAGGTGCAGGGCCAG
 GAGTCTATCAGAGAAGATGGAGCCCTCCAGTTTCCAGCCCCTACCTGAAACTGAGCCTCCAACCTCCAG
 AGCCTGGGCCAAGACACCTCCTAGGACTATGCAGGAATCACCACTGGGCTGCAGGTGAAAGAGGAGTC
 AGAGGTTACAGAGGACTCAGATTTCTGGAGTCTGGGCTCTAGCTGCCACCCAGGAGTCTGTACCCACC
 CTCTGCCTGAGGAGGCCAGAGATGTGGGACCGTGTGGACCAGATCTTTCCCCACAGCAAGACTGGGC
 CTGAGGGTCCCTCATGGAGGGAGCACCCAGGGCCCTGTGGCATGAGGAAGCTGGGGCATCTTCTCCCC
 AGGGTTCGCGCTGCAGCTAGGCAGCATCTCCGAGGTCCAGGTAGTGTAAAGCCCTCACCTCCACGTCCCC
 TGGGACCTCGGCATGGCTGGCCTTTCTGGCCAGATCCAATCACCCCTCCGCGAAGGTGGCTTTGCGCATG
 CGTTCTGCTCCCCAGCGATCTGAGGAGTGAACAGGACCCACGGACGAGGATCCCTGCCGGGTGTGGG
 CCCTGCTGTATCACCCCGCTGGCGCTCCCCAGGGCCGGAGCCGGGGCCGCCCCAGCACTGGGGG
 GGGTGGTTAGGGGCGCCGTTGCGATGTATGTGGCAAGGTGTTACGCCAACGCAGCAACCTGCTGAGGC
 ACCAGAAGATCCACAGGGTGAAGGACCATTCGTGTGCAGCGAGTGCAGCCGAGCTTCCAGCCAGCTC
 GCACCTGCTGCGCCACCACTTACGCACACCCAGGAGCGGCCGTTTCGTGTGCGGGACTGTGGCCAGGGC
 TTCGTGCGCAGCGCGCCTGGAAGAGCATCGGAGAGTGCACACGGGCGAACAGCCTTTCGTTGCGCTG
 AGTGGCCAGAGCTTCCGGCAGCGCTCCAATCTGCTGCAGCACAGCGCATCCACGGCGATCCCCCGGG
 CCCTGGCGCTAAGCCCCGGCCCTCCTGGTGCGCCGAGCCTCCCGCCCTTTCGTTGACGAGTGC
 CGGAGAGCTTCCGCGGGCGCGCTGCTGGAGCACAGGCGGTACACACGGGCGACAAGTCTTTG
 GCTGCGTGCAGTGCAGGAGCGCTTCCGCGCCGCTCAGTGTGCTGCAGCACCGCGCGTGCACAGTGG
 CGAGCGCCCTTCGCTGTGCCAGTGCAGGACAGCTTCCGGCAGCGCTCCAACCTGACGAGCACCGG
 CGCATCCACACCGGGAGCGCCCTTCGCTGCGCCGAGTGTGGCAAGGCCTTCCGCCAGCGGCCTACGC
 TCACGCAGCATCTCCGCTACACACGGGCGAGAAACCCTTTCCTGCCCCGAGTGTGGCCAGCGCTTCAG
 CCAGCGCCTCAAGCTCACGCGTATCAGAGGACACACACCGGCGAAAAGCCCTACCACTGCGGTGAGTGC
 GGCTGGGCTTACGCGAGTCTCGCGGCTCACCGAGCACAGCGCATCCACACGGGCGAACGGCCCTTCG
 CCTGCCCCGAGTGCAGGACAGCTTTCGGCAGCACGCAACCTCACCCAGCACGGCGCATCCACACGGG
 TGAACGGCCCTACGATGCCCTGAGTGTGGCAAGGCCTTCCGCCAGCGGCCACGCTCACGAGCATCTG
 CGCACCCACCGAGAGAGAAGCCCTTCGCTGCCAGGACTGTGGCCGCGCTTCCACCAGAGCACCAAGC
 TCATTACGACCGCGCTCCACAGCGCCGAG

AG**CGGACCG**ACGCGTACGCGGCCGCTCGAG – GFP Tag – GTTTAA

Protein Sequence: >RG220791 representing NM_003422
 Red=Cloning site Green=Tags(s)

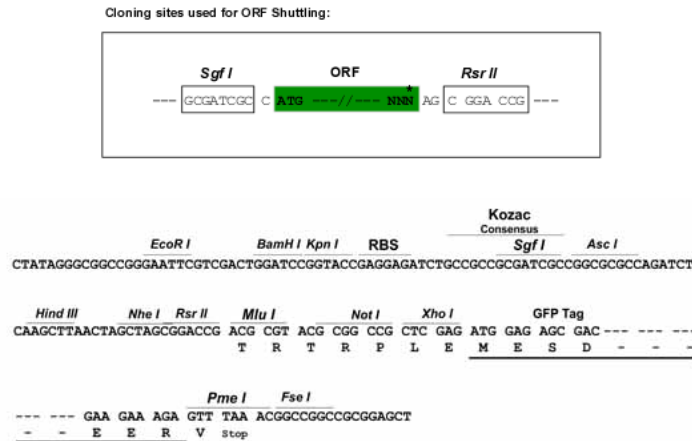
```

MRPAVLGSPDRAPPEDEGPMVKLEDESEEEGEAALWDPGPEAARLRFRCFRYEEATGPQEALQRLRELCR
QWL RPEVRSKEQMLELLVLEQFLGALPPEIQARVQGRPGSPEEAAALVDGLRREPGGPRRWTVQVQGQ
EVLSEKMEPSSFQPLPETEPPTPEPGPKTPPRTMQESPLGLQVKEESEVTEDSDFLESGPLAATQESVPT
LLPEEAQRCGTVLDQIFPHSKTGPEGPSWREHPRALWHEEAGGIFSPGFALQLGSI SAGPGSVSPHLHVP
WDLGMAGLSGQIQSPSREGGFAHALLPSDLRSEQDPTDEDPCRGVGPALITTRWRSRGRSRGRPSTGG
GVVRGGRCDVCGKVFVSQRSNLLRHQKIHTGERPFVCSECGRSFSRSSHLLRHQLTHTEERPFVCGDCGQG
FVRSARLEEHRVHTGEQPFRCACGQSFQRQSNLLQHQRHGDPPGPGAKPPAPPGAPEPPGPFPCSEC
RESFARRAVLLEHQAVHTGDKSFGVCEGGERFGRRSVLLQHRRVHSGERPFACAECGQSFQRQSNLTQHR
RIHTGERPFACAECGKAFRQRPRTLQHLRVHTGEKPFACPECGQRF SQRLKLTRHQRTHTEKPYHCGEC
GLGFTQVSRLTEHQRIHTGERPFACPECGQSFQHANLTQHRRHHTGERPYACPECGKAFRQRPRTLQHL
RTHRREKPFACQDCGRRFHQSTKLIHQHVRVHSAE
  
```

SGPTRRRLE - GFP Tag - V

Restriction Sites: SgfI-RsrII

Cloning Scheme:



ACCN: NM_003422

ORF Size: 2202 bp

OTI Disclaimer: Due to the inherent nature of this plasmid, standard methods to replicate additional amounts of DNA in E. coli are highly likely to result in mutations and/or rearrangements. Therefore, OriGene does not guarantee the capability to replicate this plasmid DNA. Additional amounts of DNA can be purchased from OriGene with batch-specific, full-sequence verification at a reduced cost. Please contact our customer care team at custsupport@origene.com or by calling 301.340.3188 option 3 for pricing and delivery.

The molecular sequence of this clone aligns with the gene accession number as a point of reference only. However, individual transcript sequences of the same gene can differ through naturally occurring variations (e.g. polymorphisms), each with its own valid existence. This clone is substantially in agreement with the reference, but a complete review of all prevailing variants is recommended prior to use. [More info](#)

OTI Annotation: This clone was engineered to express the complete ORF with an expression tag. Expression varies depending on the nature of the gene.

Components: The ORF clone is ion-exchange column purified and shipped in a 2D barcoded Matrix tube containing 10ug of transfection-ready, dried plasmid DNA (reconstitute with 100 ul of water).

Reconstitution Method:

1. Centrifuge at 5,000xg for 5min.
2. Carefully open the tube and add 100ul of sterile water to dissolve the DNA.
3. Close the tube and incubate for 10 minutes at room temperature.
4. Briefly vortex the tube and then do a quick spin (less than 5000xg) to concentrate the liquid at the bottom.
5. Store the suspended plasmid at -20°C. The DNA is stable for at least one year from date of shipping when stored at -20°C.

RefSeq: [NM_003422.2](#), [NP_003413.2](#)

RefSeq Size: 2620 bp

RefSeq ORF: 2205 bp

Locus ID: 7593

UniProt ID: [P28698](#)

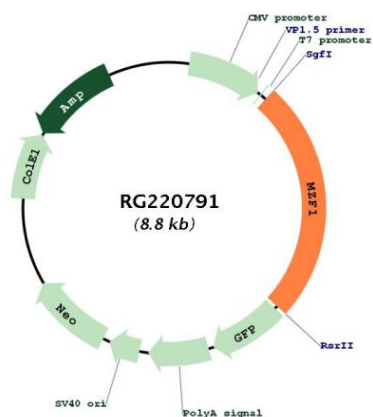
Cytogenetics: 19q13.43

Domains: zf-C2H2

Protein Families: Transcription Factors

Gene Summary: Binds to target promoter DNA and functions as transcription regulator. Regulates transcription from the PADI1 and CDH2 promoter. May be one regulator of transcriptional events during hemopoietic development.[UniProtKB/Swiss-Prot Function]

Product images:



Circular map for RG220791