

Product datasheet for **RG220751**

IL17RC (NM_032732) Human Tagged ORF Clone

Product data:

| | |
|---------------------------|---|
| Product Type: | Expression Plasmids |
| Product Name: | IL17RC (NM_032732) Human Tagged ORF Clone |
| Tag: | TurboGFP |
| Symbol: | IL17RC |
| Synonyms: | CANDF9; IL17-RL; IL17RL |
| Mammalian Cell Selection: | Neomycin |
| Vector: | pCMV6-AC-GFP (PS100010) |
| E. coli Selection: | Ampicillin (100 ug/mL) |



[View online »](#)

ORF Nucleotide Sequence:

>RG220751 representing NM_032732
 Red=Cloning site Blue=ORF Green=Tags(s)

TTTTGTAATACGACTCACTATAGGGCGGCCGGAATTCGTCGACTGGATCCGGTACCGAGGAGATCTGCC
 GCC**CGGATCGCC**

ATGCCTGTGCCCTGGTTCTTGCTGTCCTTGGCACTGGGCCGAAGCCAGTGGTCCTTTCTCTGGAGAGGC
 TTGTGGGGCCTCAGGACGCTACCCACTGCTCTCCGGGCCTCTCCTGCCGCTCTGGGACAGTGACATACT
 CTGCCTGCCTGGGGACATCGTGCCTGCTCCGGGCCCGTCTGGCGCCTACGCACCTGCAGACAGAGCTG
 GTGCTGAGGTGCCAGAAGGAGACCGACTGTGACCTCTGTCTGCGTGTGGCTGTCCACTTGGCCGTGCATG
 GGCCTGGGAAGAGCCTGAAGATGAGGAAAAGTTGGAGGAGCAGCTGACTCAGGGGTGGAGGAGCCTAG
 GAATGCCTCTCTCAGGCCAAGTCGTGCTCTCCTTCCAGGCCTACCCTACTGCCCGCTGCGTCTGCTG
 GAGGTGCAAGTGCCTGCTGCCCTGTGTCAGTTTGGTCAGTCTGTGGGCTCTGTGGTATATGACTGCTTCG
 AGGCTGCCCTAGGAGTGAGGTACGAATCTGGTCTATACTCAGCCAGGTACGAGAAGGAACTCAACCA
 CACACAGCAGCTGCCTGCCCTGCCCTGGCTCAACGTGTCAGCAGATGGTGACAACGTGCATCTGGTTCTG
 AATGTCTCTGAGGAGCAGCACTTCGGCCTCTCCCTGTACTGGAATCAGGTCCAGGGCCCCCAAAACCCC
 GGTGGCACAAAACCTGACTGGACCGCAGATCATTACCTTGAACACACAGACCTGGTCCCTGCCTCTG
 TATTAGGTGTGGCCTCTGGAACCTGACTCCGTTAGGACGAACATCTGCCCTTCAGGGAGGACCCCGC
 GCACACAGAACCTCTGGCAAGCCGCCGACTGCGACTGCTGACCCTGCAGAGCTGGCTGCTGGACGCAC
 CGTGTCTGCTGCCCGCAGAAGCGGCACTGTGCTGGCGGGCTCCGGGTGGGACCCCTGCCAGCCACTGGT
 CCCACCGCTTTCCTGGGAGAACGTCACCTGTGGACAAGTTCTCGAGTCCCATTGCTGAAAGGCCACCCT
 AACCTCTGTGTTCAAGTGAACAGCTCGGAGAAGCTGCAGCTGCAGGAGTGCTTGTGGGCTGACTCCCTGG
 GGCTCTCAAAGACGATGTGCTACTGTTGGAGACACGAGGCCCCAGGACAACAGATCCCTCTGTGCCTT
 GGAACCCAGTGGCTGTACTTCACTACCCAGCAAAGCCTCCACGAGGGCAGCTCGCCTGGAGAGTACTTA
 CTAACAAGACCTGCAGTCAGGCCAGTGTCTGCAGCTATGGGACGATGACTTGGGAGCGCTATGGGCCTGCC
 CCATGGACAAATACATCCACAAGCGCTGGGCCCTCGTGTGGCTGGCCTGCTACTCTTTGCCGCTGCGCT
 TTCCCTCATCCTCTTCTCAAAAAGGATCACGCGAAAAGGGTGGCTGAGGCTCTTGAACAGGACGTCGCG
 TCGGGGGCGGCCAGGGGCCGCGGCTCTGCTCCTACTCAGCCGATGACTCGGGTTTCGAGCGCC
 TGGTGGGCGCCCTGGCGTCGGCCCTGTGCCAGCTGCCGCTGCGCGTGGCCGTAGACCTGTGGAGCCGTCG
 TGAAGTGAAGCGCAGGGGCCCGTGGCTTGGTTTACGCGCAGCGGCCAGACCCTGCAGGAGGGCGGC
 GTGGTGGTCTTGTCTTCTCCTCCGGTGGCGTGGCGCTGTGCAGCGAGTGGCTACAGGATGGGGTGTCCG
 GGCCCGGGGCGCACGGCCGACGACGCTTCCGCGCCTCGCTCAGCTGGGTGCTGCCCGACTTCTTGCA
 GGGCCGGGCGCCCGCAGCTACGTGGGGCCTGCTTCGACAGGCTGCTCCACCCGGACGCGCTACCCGCC
 CTTTTCCGACCGTGGCCGTCTTCACTGCCCCTCCAACTGCCAGACTTCTGGGGGCCCTGCAGCAGC
 CTCGCGCCCCGCTTCCGGGCGGCTCCAAGAGAGCGGAGCAAGTGTCCCGGGCCCTCAGCCAGCCCT
 GGATAGCTACTTCCATCCCCGGGGACTCCCGCGCGGGACGCGGGGTGGGACCAGGGCGGGACCTGGG
 GCGGGGACGGGACT

ACGCGTACGCGGCCGCTCGAG – GFP Tag – GTTTAA

Protein Sequence: >RG220751 representing NM_032732
 Red=Cloning site Green=Tags(s)

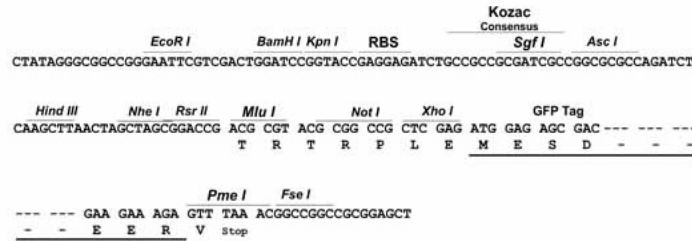
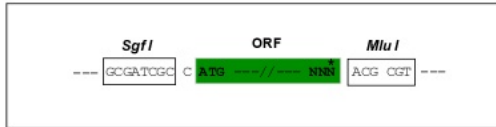
MPVPWFLLSLALGRSPVVL SLERLVGPQDATHCSPGL SCRLWSDILCLPGDIVPAPGPVLAPTHLQTEL
 VLRCQKETDCDLCLRVAVHLAVHGHWEPEDEEKFGGAADSGVEEPRNASLQAQVLSFQAYPTARCPLL
 EVQVPAALVQFGQSVGSVYDCEAALGSEVRIWSYTPRYEKELNHTQQLPALPWLNVNSADGDNVHLVL
 NVSEEQHFGLSL YWNQVQGPPKPRWHKNLTGPQIITLNHTDLVPCLCIQVWPLEPDSVRTNICPFREDPR
 AHQNLWQAARLRLLTLQSWLLDAPCSLPAEAALCWRAPGGDPCQPLVPPLSWENVTVDKVLEFPLLKGHP
 NLCVQVNSSEKLQLQECLWADSLGPLKDDVLLLETRGPQDNRSLEPESGCTSLPSKASTRAARLGEYL
 LQDLQSGQCLQLWDDDLGALWACPMKYIHKRWALVWLACLLFAAALSLILLKKDHAKGWLRLKQDVR
 SGAAARGRAALLYSADDSGFERLVGALASALCQLPLRVAVDLWSRRELSAQGPVAFWFAHQRRTLQEGG
 VVLLLFSPGAVALCSEWLQDGVSGPGAHGPHDAFRASLSCVLPDFLQGRAPGSYVGCADFRLHPDAVPA
 LFRTVPVFTLPSQLPDFLQPPRPRSGRLQERAEQVSRALQPALDSYFHPGTPAPGRGVGPGAGPG
 AGDGT

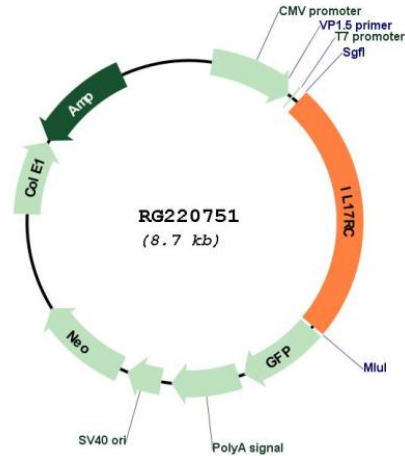
TRTRPLE - GFP Tag - V

Restriction Sites: SgfI-MluI

Cloning Scheme:

Cloning sites used for ORF Shutting:



Plasmid Map:


ACCN: NM_032732

ORF Size: 2115 bp

OTI Disclaimer: The molecular sequence of this clone aligns with the gene accession number as a point of reference only. However, individual transcript sequences of the same gene can differ through naturally occurring variations (e.g. polymorphisms), each with its own valid existence. This clone is substantially in agreement with the reference, but a complete review of all prevailing variants is recommended prior to use. [More info](#)

OTI Annotation: This clone was engineered to express the complete ORF with an expression tag. Expression varies depending on the nature of the gene.

Components: The ORF clone is ion-exchange column purified and shipped in a 2D barcoded Matrix tube containing 10ug of transfection-ready, dried plasmid DNA (reconstitute with 100 ul of water).

Reconstitution Method:

1. Centrifuge at 5,000xg for 5min.
2. Carefully open the tube and add 100ul of sterile water to dissolve the DNA.
3. Close the tube and incubate for 10 minutes at room temperature.
4. Briefly vortex the tube and then do a quick spin (less than 5000xg) to concentrate the liquid at the bottom.
5. Store the suspended plasmid at -20°C. The DNA is stable for at least one year from date of shipping when stored at -20°C.

RefSeq: [NM_032732.3](#), [NP_116121.2](#)

RefSeq Size: 2433 bp

RefSeq ORF: 2118 bp

Locus ID: 84818

UniProt ID: [Q8NAC3](#)

Cytogenetics: 3p25.3-p24.1

Protein Families: Druggable Genome, Transmembrane

Gene Summary: This gene encodes a single-pass type I membrane protein that shares similarity with the interleukin-17 receptor (IL-17RA). Unlike IL-17RA, which is predominantly expressed in hemopoietic cells, and binds with high affinity to only IL-17A, this protein is expressed in nonhemopoietic tissues, and binds both IL-17A and IL-17F with similar affinities. The proinflammatory cytokines, IL-17A and IL-17F, have been implicated in the progression of inflammatory and autoimmune diseases. Multiple alternatively spliced transcript variants encoding different isoforms have been detected for this gene, and it has been proposed that soluble, secreted proteins lacking transmembrane and intracellular domains may function as extracellular antagonists to cytokine signaling. [provided by RefSeq, Feb 2011]