

Product datasheet for **RG220737**

KIAA0664 (CLUH) (NM_015229) Human Tagged ORF Clone

Product data:

Product Type:	Expression Plasmids
Product Name:	KIAA0664 (CLUH) (NM_015229) Human Tagged ORF Clone
Tag:	TurboGFP
Symbol:	KIAA0664
Synonyms:	CLU1
Mammalian Cell Selection:	Neomycin
Vector:	pCMV6-AC-GFP (PS100010)
E. coli Selection:	Ampicillin (100 ug/mL)
ORF Nucleotide Sequence:	>RG220737 representing NM_015229 Red=Cloning site Blue=ORF Green=Tags(s)

TTTTGTAATACGACTCACTATAGGGCGGCCGGAATTCGTCGACTGGATCCGGTACCGAGGAGATCTGCC
GCC**CGATCGCC**

ATGCTCTTAAACGGGACTGCCAGAGAGCCTGAAGAAGGAGGCGGCGGCCGAGCCACCCAGGGAAA
ATGGGCTTGACGAGGCCGCGCCGGGAGATGAGACCACCGCCAGGAAGTCATTGTCATTACAGACACGGG
CTTTCTGTGAAGATCCTCGCCCTGGGATCGAGCCCTTCTCCCTGCAGGTGTCCCCCAGGAGATGGT
CAGGAGATTACCAGGTGCTCATGGACCGGAGGACACGTGTACCGCACCTGCTTCTACTGCACCTGG
ATGGCAACGTGCTGGACCACTTCTCGGAGCTGCGCAGCGTCGAGGGGCTGCAGGAGGGCTCTGTGCTGCG
TGTGGTGAAGAGCCGTACACGGTGCCTGAGGCCCGCATCCACGTGCGCCATGTCCGAGACCTGCTCAAG
AGCCTGGACCCATCCGATGCCTTCAACGGGTTGACTGCAACTCCTTGTCTTCTGAGTGTCTTACCCG
ACGGCGACCTGGGAGACAGCGGGAAGCGGAAGAAGGGCTTGGAGATGGACCCATCGACTGCACACCACC
CGAGTACATCCTGCCAGGGAGCCGGGAGCGGCCACTGTGTCCCCTGCAGCCCCAAAACCGTACTGGAAG
CCCTTGCAGTGCCTGAAAGTACTCACCATGAGCGGATGGAACCCGCCCGGGGAACCGGAAGATGCACG
GGACCTCATGTACCTGTTTGTGATCACAGCCGAGGACCGGAAGTCAGCATCACCGCTCCACACGGGG
CTTTTACCTGAATCAGTCCACAGCTTATCACTTCAACCCCAAGCCCGCCAGCCCCGCTTCTTAAGCCAT
TCCCTAGTGGAGCTGCTCAACCAGATCAGCCCGACCTTCAAGAAGAAGTTCGCTGTGCTGCAGAAGAAA
GGGTCCAGCGCCACCCGTTTCGAGAGGATCGCCACCCATTCCAGGTGTACAGCTGGACAGCCCCCAGGC
GGAGCATGCCATGGATTGCGTGCCTGCAGAGGACGCTACACCTCGAGGCTGGGCTATGAGGAGCATT
CCTGGACAGACCCGAGACTGGAATGAGGAGCTGCAGACGACGAGGGAGCTGCCTCGAAGAACCTGCCTG
AGCGGCTGCTCCGAGAAAGGGCCATATTCAAGGTGCACAGCGACTTACCAGCGCAGCCACCAGGGGCGC
CATGGCCGTATTGACGGCAACGTGATGGCCATCAACCCAGCGAGGAGACCAAGATGCAGATGTTTCATC
TGAACAACATCTTCTCAGCCTGGGCTTCGACGTCCGAGACCACTACAAGGACTTCGGGGGGACGTGG
CGGCTACGTGGCGCCCAACGACCTGAATGGCGTCCGACGTACAACGCGGTGGACGTGGAGGGCT
GTACACGCTGGCACGGTGGTGGATTACCGCGCTACCGGTCACGGCCAGTCCATCATCCCCGGC



ATCTGGAGCGGGACCAGGAGCAGAGCGTCACTACGGCTCCATCGACTTCGGCAAGACCGTGGTGTAC
 ACCCGCGGTACCTGGAGCTGCTGGAGCGCACGAGTCGGCCCTCAAGATCCTGCGGCACCAGGTGCTCAA
 CGACCGTGACGAGGAGGTGGAGCTCTGCTCCTCGGTGAGTGCAAGGGCATATTGGCAACGACGGGCGC
 CACTACATCCTCGACCTGCTGCGCACCTCCCCCGGACCTCAACTTCTGCCGTGCTGGCGAGGAGC
 TGCTGAGGAATGCGCCCGCGCGGCTTCCCCGCGCCACCAGGACAAGCTCTGCTGCCTGCGCCAGGA
 GCTGGTGGACGCCTTCGTGGAGCACAGGTACCTCCTTTATGAAGCTGGCCGCCTTGCAGCTGATGCAG
 CAGAAGCCAGCCAGCTGGAGACCCCTCCTCCCTGGAAAAATGGTGGTCCCTTCTCCTGGAGTCCAAGT
 CTGAGGATCCTCCAGGACAGGAGCGGGAAGTGAAGGAGGAGGTAGCAGCGCCAGCGGCCTGGCCAAGGT
 GAAGGAGCTGGCAGAGACCATCGCCGACAGCAGGACAGACCCCTCGGAGCCGGGAGGTGATCCGCAAC
 GCGTGCAAGGCGGTGGCTCCATCAGCAGCACCCTTCGACATTCGCTTCAATCCTGACATCTTCTCAC
 CAGGGGTTCTTTCCCTGAGTCTGCCAGGATGAAGTTCGGGACCAGAAGCAGCTGCTGAAGGACGCGGC
 TGCCTTCTGCTCTCCTGCCAGATCCCTGGCTGGTGAAGGACTGCATGGAGCACGCGGTCTGCCCGTG
 GACGGGCAACGCTGGCAGAGGTGATGCCAGCGGGGCATCAACATGCGCTACCTGGGCAAGGTGCTGG
 AGCTGGTCTGCGGAGCCCGCCGCCACCAGCTGGACCAGTCTTAAAATCGGCATTGGAGAACTCAT
 CACCCGCTCGGCCAAGCACATCTTCAAGACGTACTTACAGGGAGTCGAGCTCTCCGGCCTCTCAGCCGCC
 ATCAGCCACTTCTGAAGTGTCTCCTGAGCTCCTACCCAAACCCCGTGGCCACCTGCCCGCCAGCAGC
 TGGTCTCCAAGAAGCGGAATAAGAGGAGGAAAAACCGGCCCGGGGGTGCAGATAACACAGCCTGGGC
 TGTGATGACCCCCAGGAGCTCTGGAAGAACATCTGCCAGGAGGCCAAGAATACTTTGACTTCGACCTC
 GAGTGTGAGACCGTGGACCAGGCTGTGGAGACCTACGGCTGCAGAAGATAACGCTCCTGCGGGAGATCT
 CGCTGAAAACAGGGATCCAGGCTCTGCTGAAGGAGTACAGCTTCGACAGTCGCCACAAGCCCGGTTTAC
 CGAGGAGGACGTCTCAACATCTTCCCGTGGTCAAGCACGTCAACCCCAAGGCCTCGGATGCCTCCAT
 TTCTTCCAGAGCGGGCAGGCCAAAGTGCAGCAGGGCTTCTGAAGGAGGGCTGTGAGTCTCAATGAGG
 CCCTGAACCTGTTTAAACAACGTCTACGGAGCCATGCACGTGGAGACCTGCGCCTGCCTCCTCGC
 CCGCCTCCACTACATCATGGGCGACTACGCAGAGGCCCTGAGTAACCAGCAGAAGGCGGTGCTGATGAGC
 GAGCGGGTGTGGGCACCGAGCACCCCAACACCATCCAGGAATACATGCACCTGGCCCTGTACTGCTTCG
 CCAGCAGCCAGCTGTCCACCGCCCTGAGCCTGCTACCGCGCCCGCTACCTCATGCTGCTGGTGTTCGG
 GGAAGACCACCCGAGATGGCGCTGCTGGACAACAACATCGGGCTGGTGTGCACGGGGTGTGGAGTAC
 GACCTGTGCTGCGCTTCTGGAGAACGCGCTGGCCGTCAGCACCAAGTACCACGGGCCAAGGCCCTCA
 AGGTGGCCCTCAGCCACCACCTTGTGCGCCGAGTCTACGAGAGCAAAGCTGAGTTCGGTTCGGCCCTGCA
 GCACGAGAAGGAGGGTTACACCATCTACAAGACGACGTGGGCGAGGACCATGAGAAGACCAAGGAAAGC
 TCCGAGTACCTCAAGTGCCTGACCCAGCAGGCCGTGGCCCTGCAGCGCACCATGAACGAGATCTACCGCA
 ACGGCTCCAGCGCAACATCCCGCCCTCAAGTTCACGGCCCCAGCATGGCCAGCGTCTTGAGGACGCT
 GAACGTCAATTAACGGCATCCTTTCATTCTCTCAGCCAAAAAGACCTGGAGAATCTGAAAGCCGAGGTG
 GCGCGGCGGCACCAGCTCCAGGAGGCCAGCAGAAAACAGGGATAGAGCCGAGGAGCCCATGGCTACCGAGC
 CCGCGCCAGCGGGGCCCCAGGAGACCTGGGCTCCAGCCCCGGCTGCCAAGGACCCCTTCTCCGAGCGT
 GCAGGGA

AGCGGACCGACGCGTACGCGGCCGCTCGAG – GFP Tag – GTTTAA

Protein Sequence: >RG220737 representing NM_015229
 Red=Cloning site Green=Tags(s)

```

MLLNGDCPESLKKEAAAAEPPRENLDEAGPGDETTGQEVIVIQDTGFSVKILAPGIEPFSLQVSPQEMV
QEIHQVLM DREDTCHRTCFSLHLDGNVLDHFSELRSVEGLQEGSVLRVVEEPTVREARIHVRHVRDLLK
SLDPSDAFNGVDCNSLSFLSVFTDGDLDGSGKRKKGLEMDPIDCTPPEYILPGSRERPLCPLQPQRNDWK
PLQCLKVL TMSGWNPPPGNRKMHGDLMYL FVIT AEDRQVSITASTRGFYLNQSTAYHFNPKPASPRFLSH
SLVELLNQISPTFKNF AVLQKKRVRHPFERIATPFQVYSWTAPQAEHAMDCVRAEDAYTSRLGYEEHI
PGQTRDWN EELQTTRELPRKNLPERLLRERAI FKVHSDFTAATRGAMAVIDGNVMAINPSEETKMQMFI
WNNIFFSLGFDVRDHYKDFGGDVAAYVAPTNDLNGVRTYNAVDVEGLYTLGTVVVVDYRGYRVTAQSIIPG
ILERDQEQSVIYGSIDFGKTVVSHPRYLELLERTSRPLKILRHQVLNDRDEEVELCSSVECKGIIGNDGR
HYILDLLRTFPPDLNFLPVPGEELPEECARAGFPRAHRHKL CCLRQELVDAFVEHRYLLFMKLAALQLMQ
QNASQLETPSSLENGPSSLESKSEDPPGQEQAGSEEEGSSASGLAKVKELAE TIAADDGTPRSREVIRN
ACKAVGSI SSTA FDIRFPNDIFSPGVRFPESCQDEV RDQKQLLKDAAAFLLSCQIPGLVKDCMEHAVLPV
DGATLAEVMRQGINMRYL GKVLEL VLRSPARHQLDHVFKIGIGELITRS AKHIFKTYLQGV ELSGL SAA
ISHFLNCF LSSYPNVAHLPADELVS KKRNRKRNRPPGAADNTAWAVMTPQELWKNICQEAKNYDFDL
ECETVDQAVETYGLQKITLLREI SLKTGIQVLLKEYSFD SRHKPAFTEEDV LNI FVPVKHV NPKASDAFH
FFQSGQAKVQQGFLKEGCELINEALNLFNNVYGAMHVETCA CLRLLARLHYIMGDYAEALSNQQKAVLMS
ERVMGTEHPNTIQEYMLALYCFASSQLSTALSLLYRARYLMLLVFGEDHPEMALLDNNIGLVLHGMEY
DLSLRFLENALAVSTKYHGPKALKVALSHHLVARVYESKAEFRSALQHEKEGYTIYKTQLGEDHEKTKES
SEYLKCLTQQAVALQRTMNEIYRNGSSANIPPLKFTAPSMASVLEQLNVINGILFIPLSQKDLENLKAEV
ARRHQLQEASNRDRAE EPMATEPAPAGAPGDLGSQPPAAKDPSPSVQG
  
```

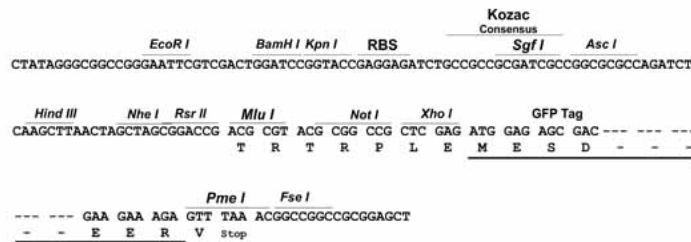
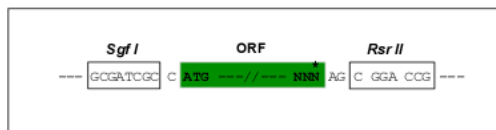
SGPTRRRLE - GFP Tag - V

Restriction Sites:

SgfI-RsrII

Cloning Scheme:

Cloning sites used for ORF Shuttling:

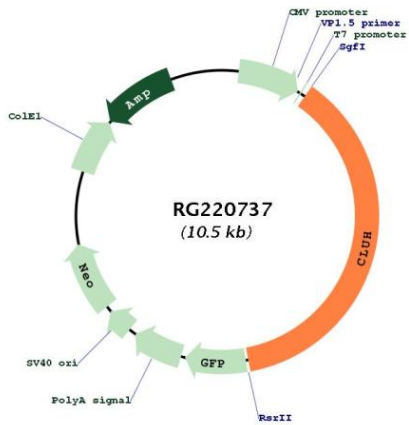


ACCN: NM_015229

ORF Size: 3927 bp

OTI Disclaimer:	<p>Due to the inherent nature of this plasmid, standard methods to replicate additional amounts of DNA in E. coli are highly likely to result in mutations and/or rearrangements. Therefore, OriGene does not guarantee the capability to replicate this plasmid DNA. Additional amounts of DNA can be purchased from OriGene with batch-specific, full-sequence verification at a reduced cost. Please contact our customer care team at custsupport@origene.com or by calling 301.340.3188 option 3 for pricing and delivery.</p> <p>The molecular sequence of this clone aligns with the gene accession number as a point of reference only. However, individual transcript sequences of the same gene can differ through naturally occurring variations (e.g. polymorphisms), each with its own valid existence. This clone is substantially in agreement with the reference, but a complete review of all prevailing variants is recommended prior to use. More info</p>
OTI Annotation:	This clone was engineered to express the complete ORF with an expression tag. Expression varies depending on the nature of the gene.
Components:	The ORF clone is ion-exchange column purified and shipped in a 2D barcoded Matrix tube containing 10ug of transfection-ready, dried plasmid DNA (reconstitute with 100 ul of water).
Reconstitution Method:	<ol style="list-style-type: none"> 1. Centrifuge at 5,000xg for 5min. 2. Carefully open the tube and add 100ul of sterile water to dissolve the DNA. 3. Close the tube and incubate for 10 minutes at room temperature. 4. Briefly vortex the tube and then do a quick spin (less than 5000xg) to concentrate the liquid at the bottom. 5. Store the suspended plasmid at -20°C. The DNA is stable for at least one year from date of shipping when stored at -20°C.
RefSeq:	NM_015229.3 , NP_056044.3
RefSeq Size:	5252 bp
RefSeq ORF:	4044 bp
Locus ID:	23277
UniProt ID:	O75153
Cytogenetics:	17p13.3
Protein Families:	Druggable Genome
Gene Summary:	<p>mRNA-binding protein involved in proper cytoplasmic distribution of mitochondria. Specifically binds mRNAs of nuclear-encoded mitochondrial proteins in the cytoplasm and regulates transport or translation of these transcripts close to mitochondria, playing a role in mitochondrial biogenesis.[UniProtKB/Swiss-Prot Function]</p>

Product images:



Circular map for RG220737